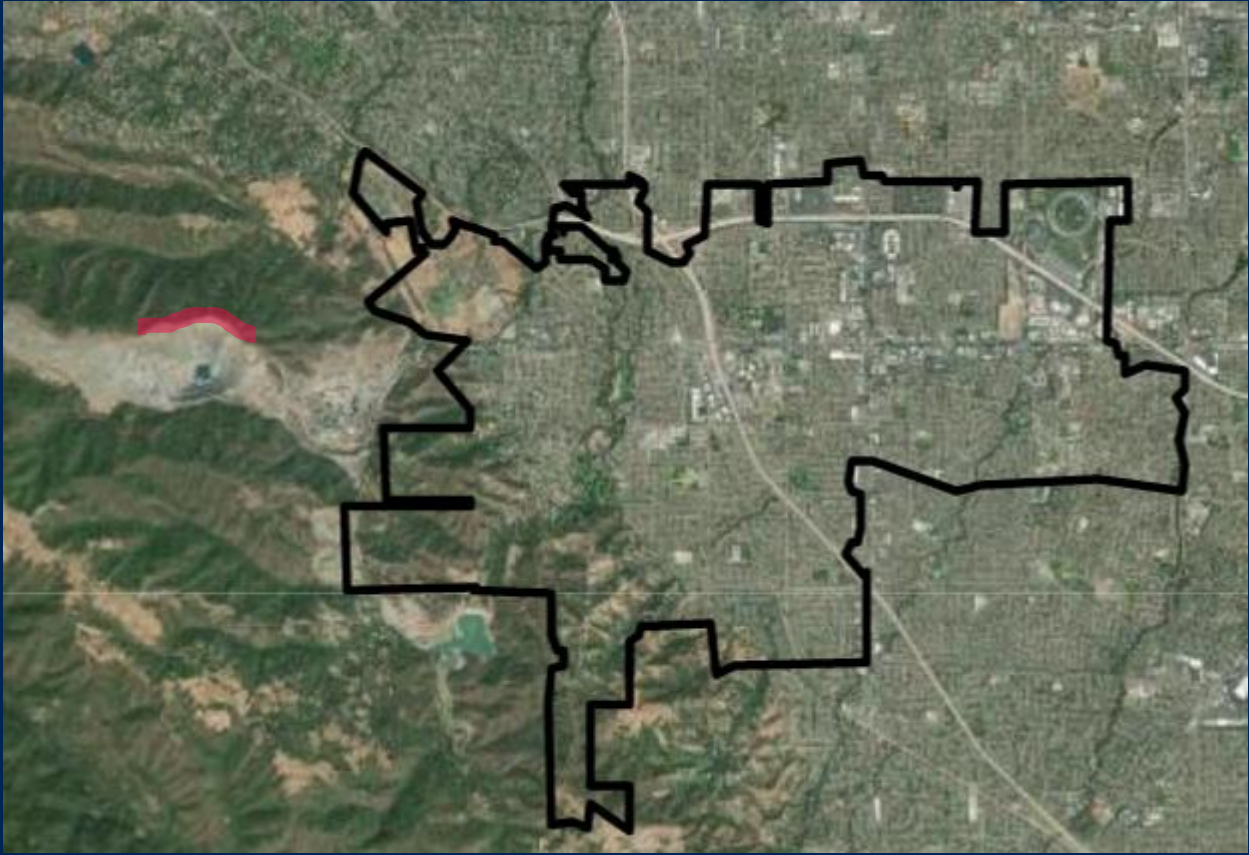


Letter of Support Regarding 1972 Ridgeline Easement Enforcement Rights to Midpeninsula Regional Open Space District

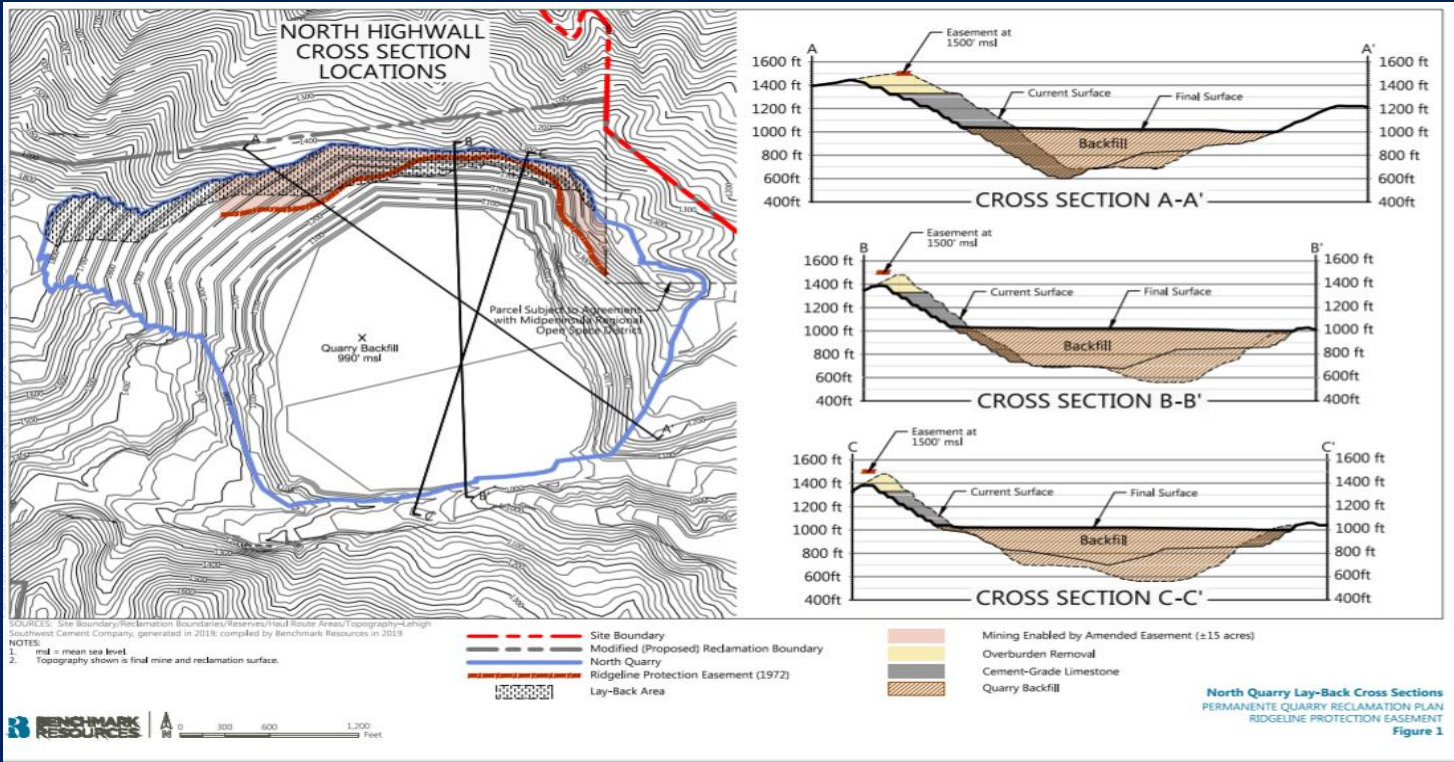
Cupertino City Council
June 18, 2021

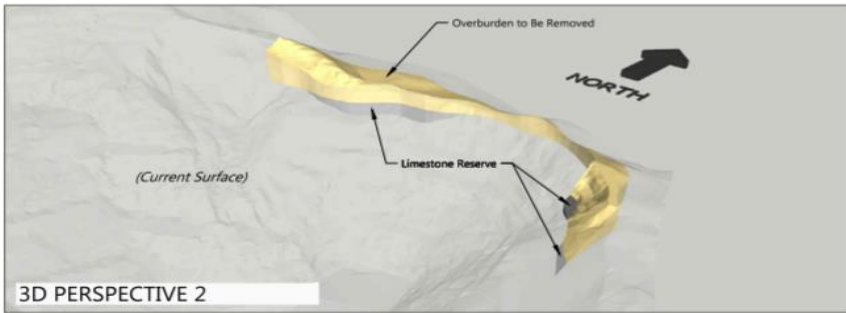
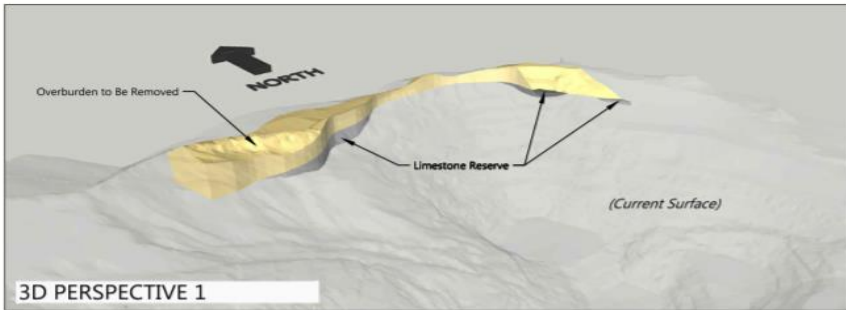
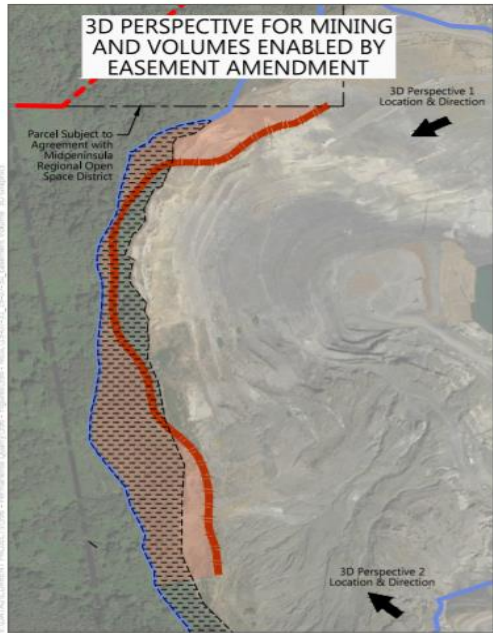


CUPERTINO









SOURCES: Site Boundary/Reclamation Boundaries/Access/Head Route Area/Topography-Loigh Southwest Cement Company, generated in 2018; Aerial-Google Earth (8-9-2018); compiled by Benchmark Resources in 2019

- NOTES:
1. CY=cubic yards.
 2. 3D=3-dimensional

- -
 -
 -
 -
 -
 -
 -
- Site Boundary
 - Modified (Proposed) Reclamation Boundary
 - North Quarry
 - Ridgeline Protection Easement (1972)
 - Lay-Back Area
 - Mining Enabled by Amended Easement (±15 acres)
 - Overburden Removal
 - Cement-Grade Limestone



Easement Grading Area and Volumes
 PERMANENTE QUARRY RECLAMATION PLAN
 RIDGELINE PROTECTION EASEMENT
 Figure 2

Letter of Support Regarding 1972 Ridgeline Easement Enforcement Rights to Midpeninsula Regional Open Space District

Cupertino City Council
June 18, 2021



CUPERTINO