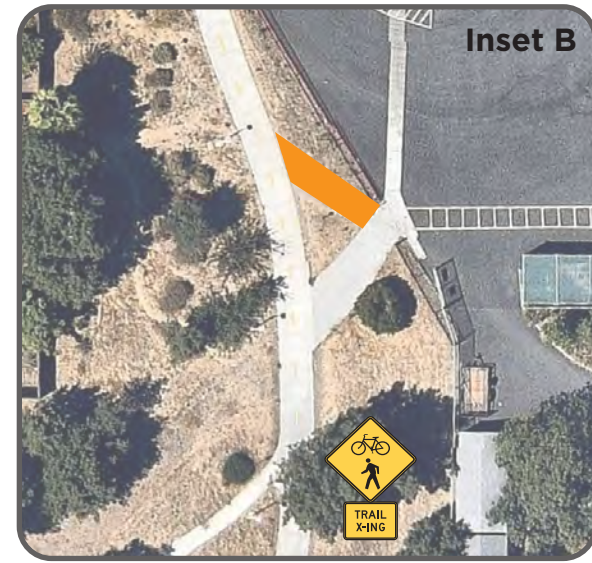
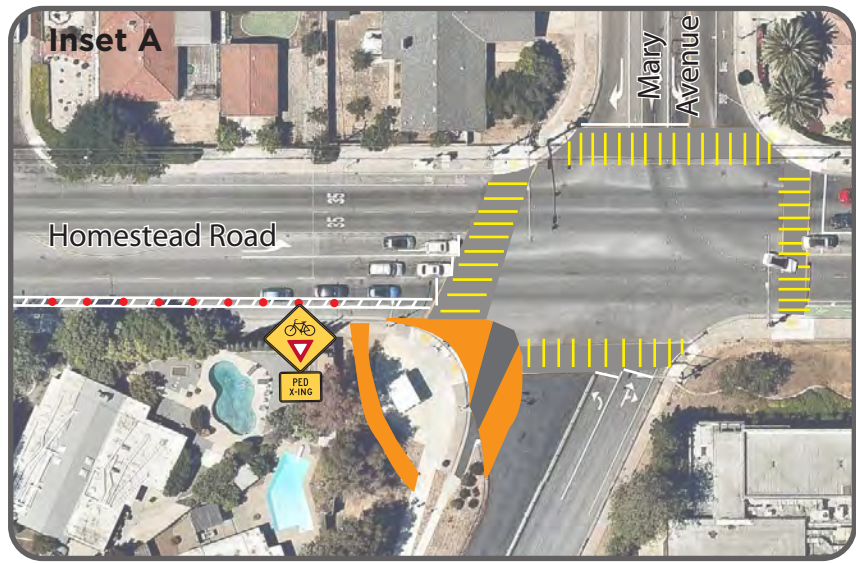






Homestead High School Walk Audit Recommendations Map

- 1** Mackenzie Drive at Homestead Road:
 - Install ADA-compliant curb ramps.
 - Tighten turn radii at corners.
 - Install high-visibility crosswalk.
- 2** Mary Avenue at Homestead Road:
 - Install high-visibility crosswalks.
 - Study signal timing adjustment for all-red pedestrian phase.
 - Reconstruct southwestern corner to tighten turning radius.
 - Install new ramp approx 25 feet west of intersection curb ramp.
 - Build bicycle path behind bench shelter to connect to Mary Avenue Bridge path.
 - Reduce vehicle lane widths to 11 feet to convert existing bike lanes to buffered bike lane. Add flexible delineators in buffer space.
- 3** Kennewick Drive at Homestead Road:
 - Install high-visibility crosswalks on roadway crossings.
 - Conduct study to reconfigure traffic signal to allow for bi-directional travel in driveway.
- 4** Horseshoe:
 - Install pavement markings to promote a thru lane. Provide loading zone and signage and markings adjacent to curb.
 - Install flexible delineators on Homestead Road in the double yellow line to block vehicles from turning left into the Horseshoe.
 - Extend double yellow lines in center turn lane and install flexible delineators to prevent left turns from the Horseshoe onto Homestead Road.
- 5** Student parking lot:
 - Make western driveway right-in, right out.
 - Add flexible delineators on Homestead Road to block vehicles from turning left out of parking lot.
- 6** South Mary Avenue parking lot access:
 - Pave informal path to allow for safer bicycle access.
 - Long Term: Install mini-roundabout.



| | | | |
|---|---------------------|---|---------------------------|
|  | Flexible Delineator |  | New Curb Ramp |
|  | New Sidewalk/Path |  | Potential Bicycle Parking |

