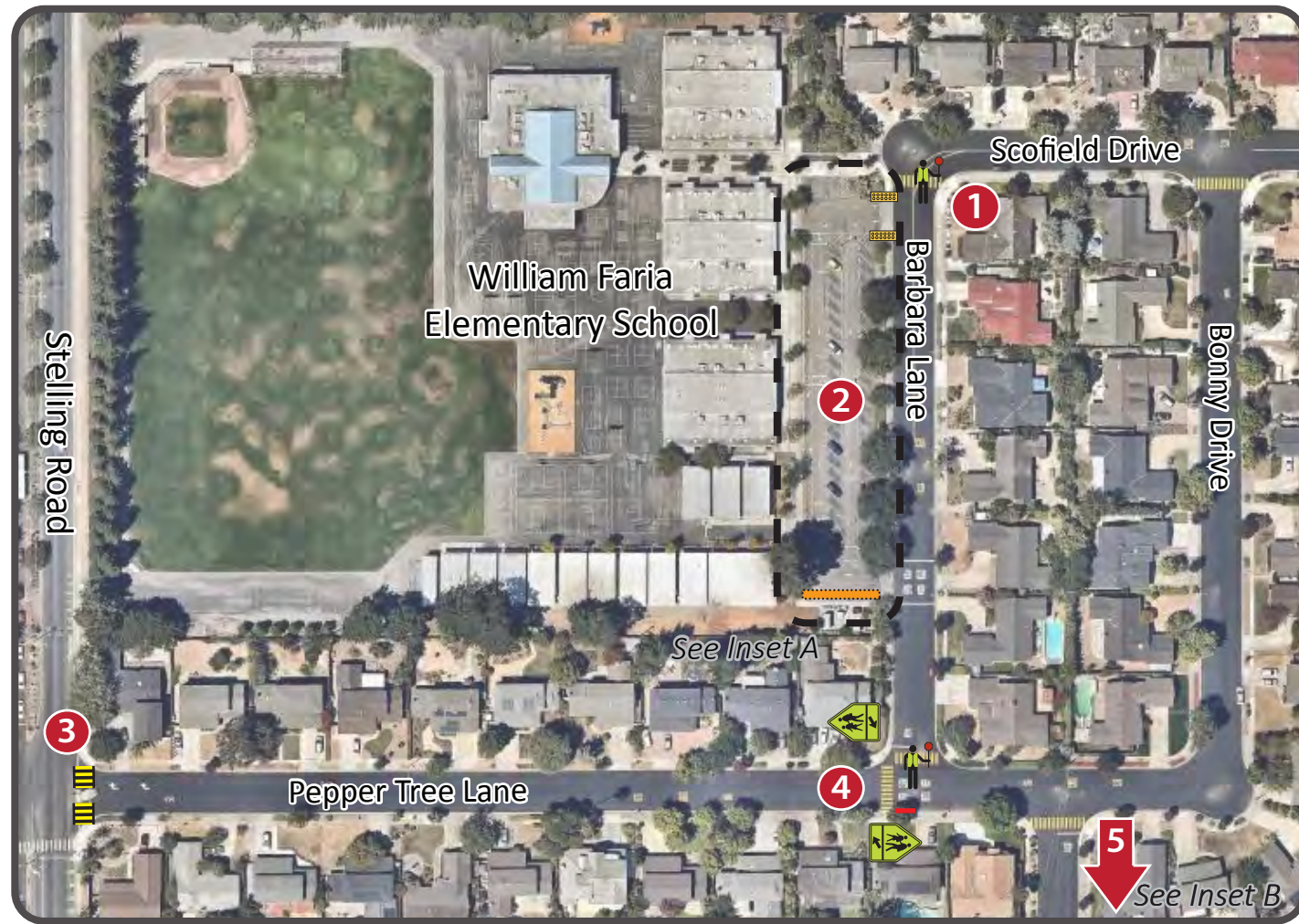


Faria Elementary School Safe Routes to School Improvement Plan

- 1 Scofield Drive/Barbara Lane**
-Study feasibility of crossing guard
- 2 School Drop-Off**
-Reconstruct driveways to city standards
-Install truncated domes on either side of driveway at sidewalks
-Widen sidewalk at southern end to approximately 15 feet
-Remove pole at exit driveway, south side
-Remove red curb at southwestern corner
-Install "Vanpool Parking Only" signs at southwestern corner
- 3 Pepper Tree Lane/Stelling Road**
-Install yellow high-visibility crosswalk across Pepper Tree Lane
-Install Leading Pedestrian Interval with 5 second lead time for all legs of intersection
- 4 Pepper Tree Lane/Barbara Lane**
-Study feasibility of crossing guard
-Install school assembly B signage
-Install red curb from light pole to driveway
- 5 Shelly Drive/Bonny Drive**
-Install high-visibility crosswalk across Shelly Drive
-Conduct yield sign warrant analysis




 Recommended High-Visibility Crosswalk

 Recommended Crossing Guard Location


 Recommended Advance Yield Markings

 Recommended Yield Sign

 Recommended Sidewalk

 Recommended Truncated Domes

 Recommended Curb Ramp

 Recommended Curb Extension

 Recommended School Assembly B

Improvements not to scale

0 150 ft

