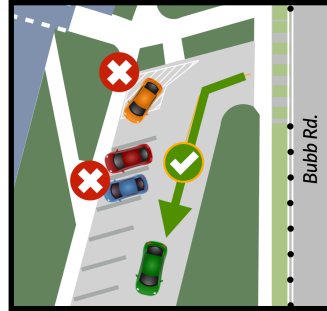
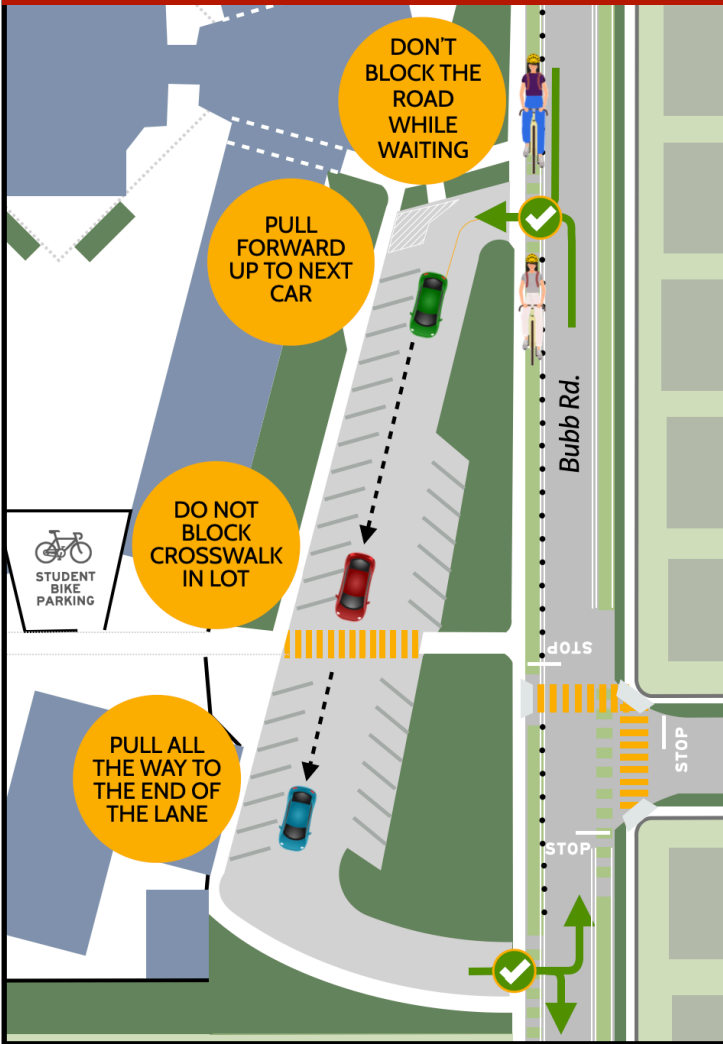
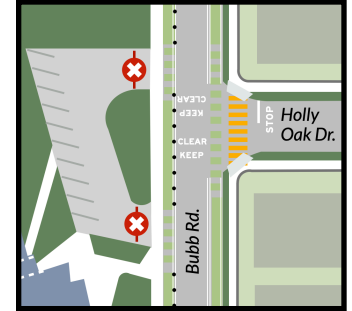




Bubb Road Drop off



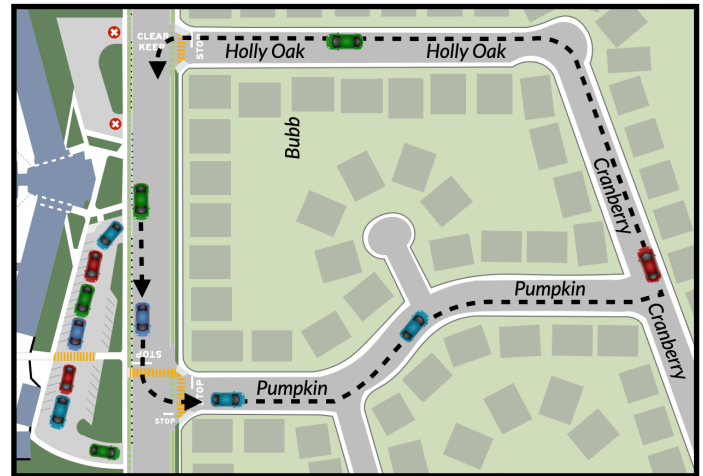
Never park in the lot or stop in the painted area in the Bubb lot. Stay in the through lane.



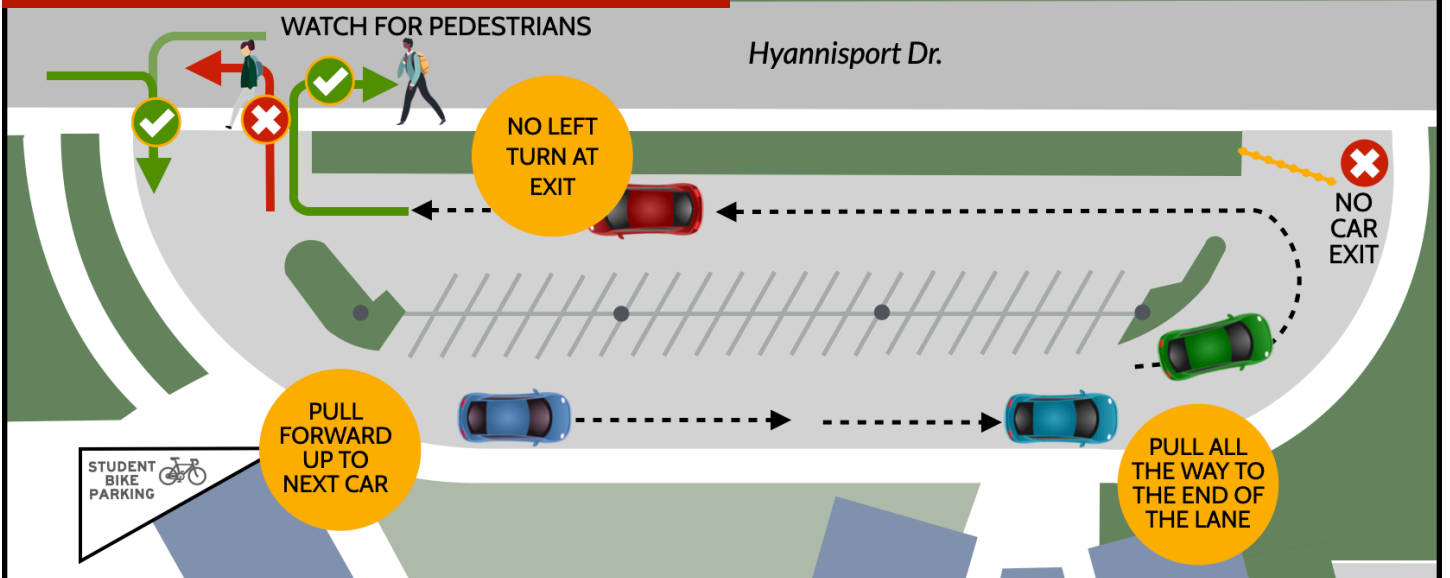
No drop off or pickup is allowed in the Staff lot across from Holly Oak. Use the other lots.

What to do if Drop Off Lane on Bubb is Full

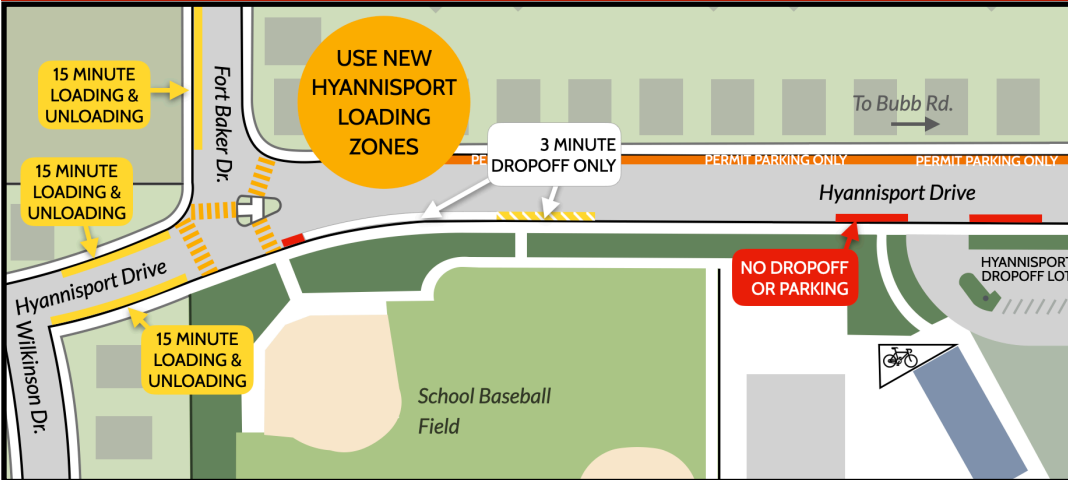
Do not block Bubb Road by idling in the road while waiting to use the dropoff lane. Go around the block by turning onto Pumpkin as shown below until lane is clear.



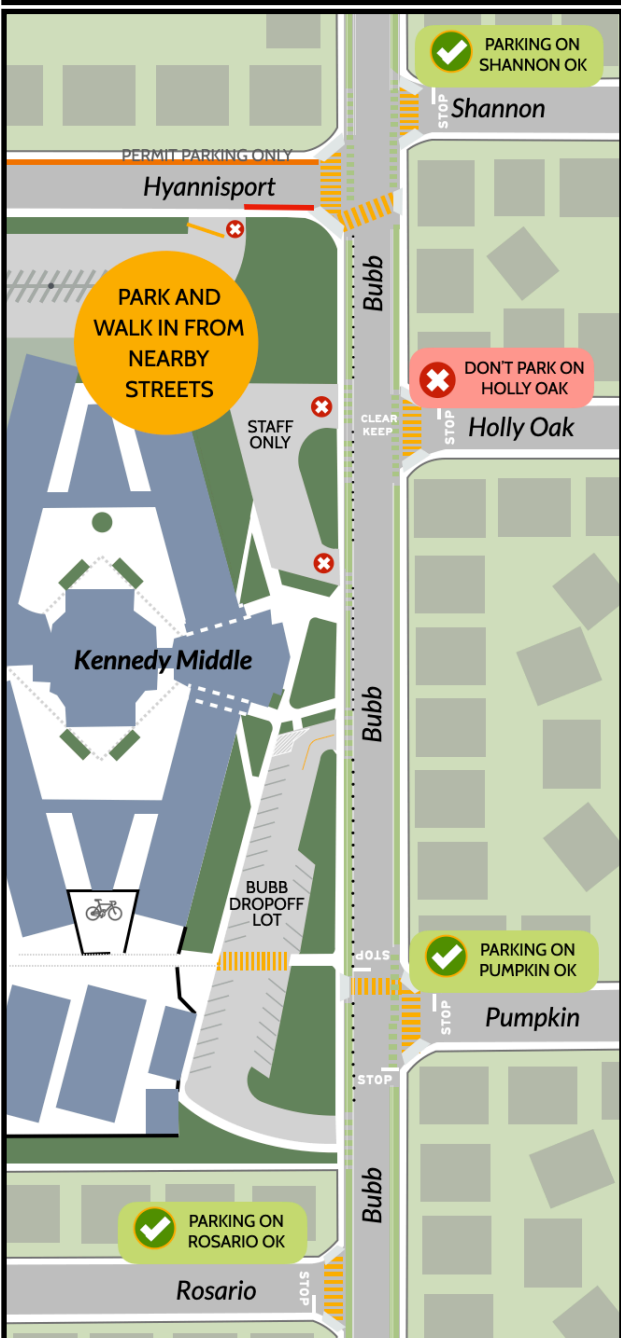
Hyannisport Drive Drop off



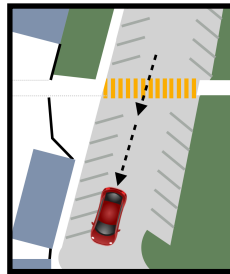
Other Drop Off Options



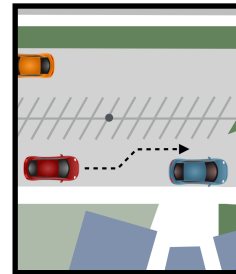
Make sure your child crosses only in marked crosswalks, never between crossings.



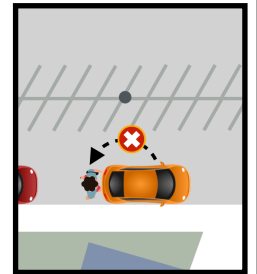
Keep Traffic Moving in the Lanes



Pull all the way forward in the lane, no matter how late your child is.



Pull away from inside drop off lane or curb when you are done to exit.



Don't get out of your car. Don't get items out of your trunk. Be ready.

YOU CAN:



- Avoid the traffic jams near school
- Increase your child's school success
- Save gas, money, and be more green

HAVE YOUR CHILD WALK, BIKE, OR SCOOTER TO SCHOOL!



- Students must walk their bikes on campus
- KMS has two locked bike cages during the day
- Students should bring their own bike lock

