

TORRE AVENUE

LIMIT OF WORK

LIMIT OF WORK

LIBRARY

CITY HALL

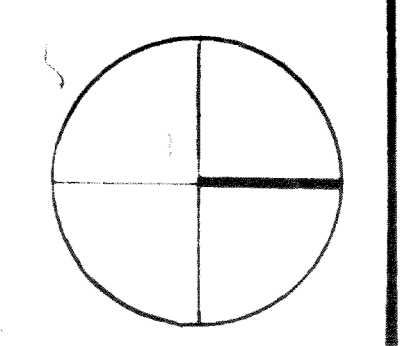
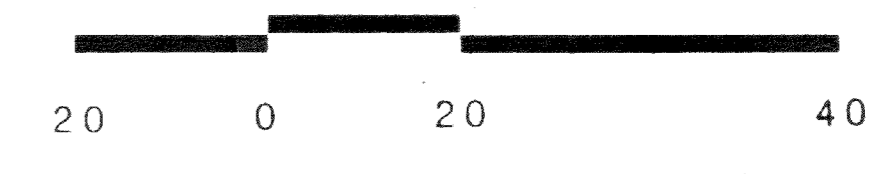
RODRIGUES AVENUE

REGNART CREEK

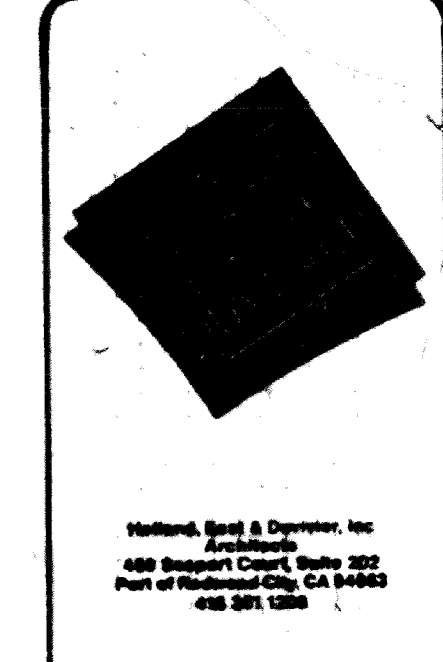
LIMIT OF WORK

- CONSTRUCTION NOTES:
- 1 SUPPLY AND INSTALL NEW 20A-1P BREAKER(S) IN SPACES AT (E) PANEL "L".
 - 2 SUPPLY AND INSTALL NEW 20A-1P BREAKER(S) IN SPACES AT (E) MAIN SWITCHBOARD "MSB" LOCATED IN BASEMENT OR LIBRARY.
 - 3 SUPPLY AND INSTALL (1) 70A-3P BREAKER IN (E) "MSB" LOCATED IN LIBRARY, FOR FOUNTAIN PUMP(S).
 - 4 INTERCEPT (E) CONDUIT & INSTALL (N) CHRYSLER PULL SPICE BOX ADAPT CIRCUITRY AS SHOWN TO SUPPLY POWER TO (E) FIXTURES & VESTIB END OFF LIBRARY.
 - 5 PRIOR TO INSTALLATION, ELECTRICAL CONTRACTOR TO REVIEW, SUPPLY EQUIPMENT (AS REQUIRED) AND INSTALL FOUNTAIN EQUIPMENT AS SHOWN ON FOUNTAIN DRAWINGS.

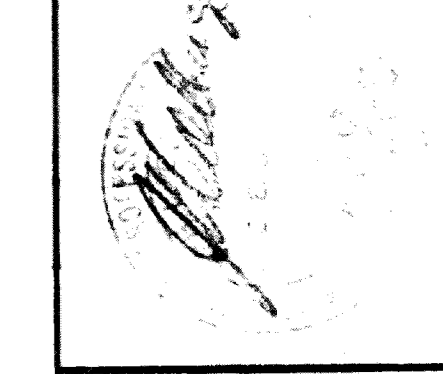
PARTIAL ELECTRICAL SITE PLAN-NORTH
SCALE: 1"=30'-0"



10-24-B6
11-86



PMB Associates, Inc.
Consulting Engineers
 1000 California Street, Suite 1000, San Francisco, CA 94108-1111, (415) 774-2000



Civic Center Improvements
CITY OF CUPERTINO
 Cupertino, California

ELECTRICAL SITE PLAN - NORTH

DRAWN	
CHECKED	
DATE	OCT. 24, 1986
SCALE	1" = 20'
JOB NO.	80227
SHEET	

E-0.2
OF SHEETS

TORRE AVENUE

PACIFICA AVENUE

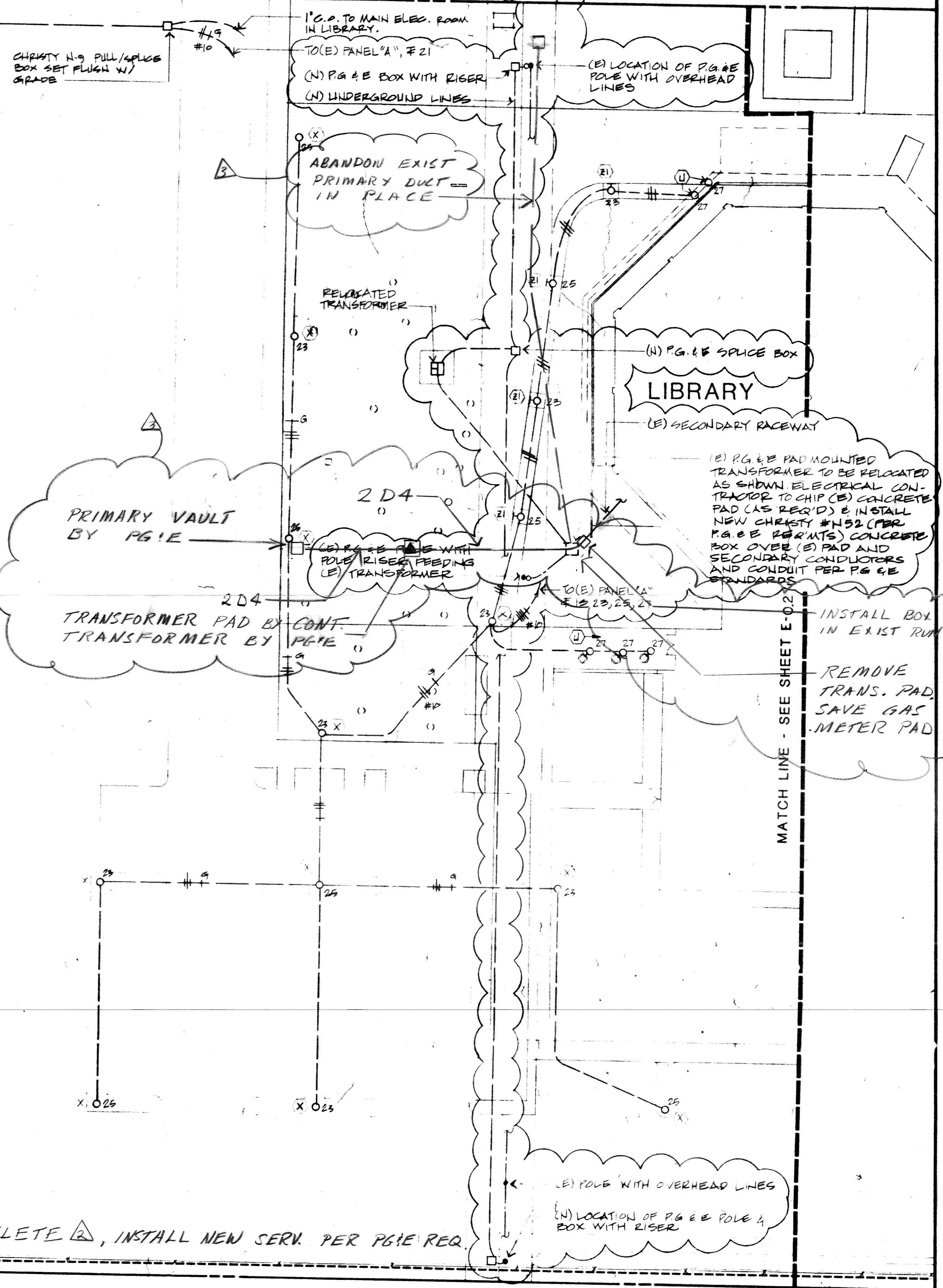
REGNART CREEK

NOTE: EXISTING OVERHEAD LINES SHALL BE BURIED & (1) POLE (LOCATED IN CENTER OF EASEMENT) REMOVED & (2) POLE (LOCATED NEAR EAST END OF EASEMENT) BE LOCATED OUT OF PARKING AREA AS SHOWN BY PERE UNDER SEPARATE CONTRACT W/ PG&E

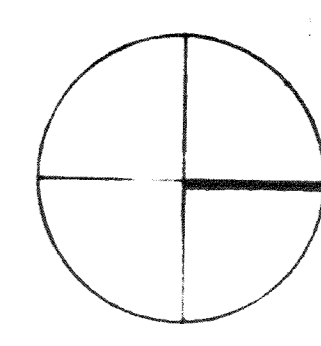
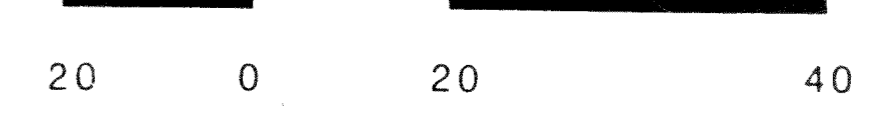
LIMIT OF WORK

LIMIT OF WORK

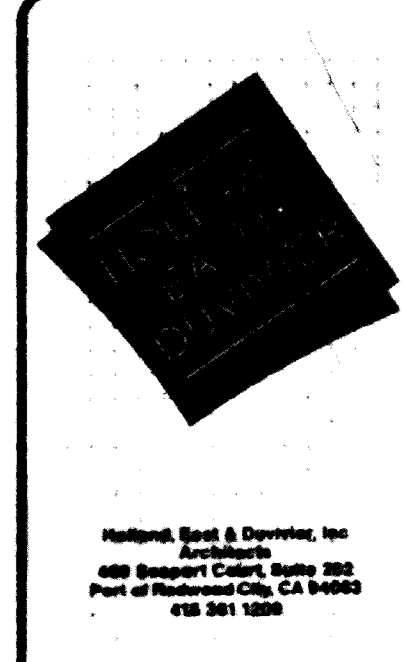
LIMIT OF WORK



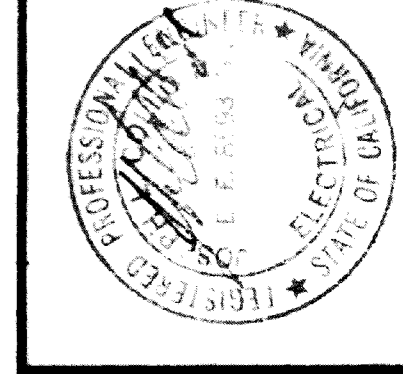
1 PARTIAL ELECTRICAL SITE PLAN - SOUTH
SCALE 1" = 20'-0"



10-24-86
1-86
6-10-87 (PM)



David H. Heston, Inc.
 Electrical Engineering
 1000 S. Bascom Ave., Suite 200
 San Jose, CA 95128
 (415) 961-1111

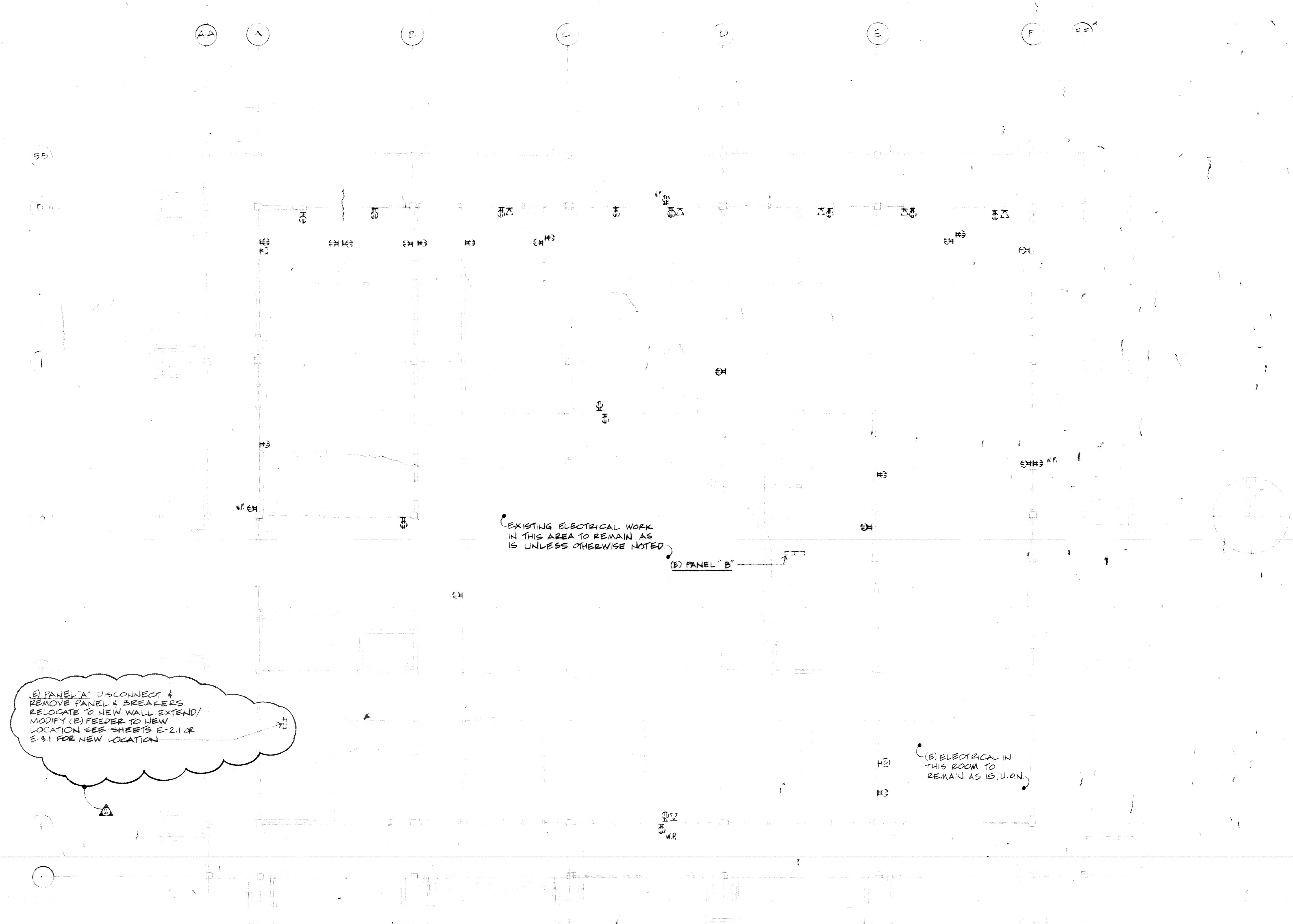


Civic Center Improvements
CITY OF CUPERTINO
 Cupertino, California

ELECTRICAL SITE
 PLAN - SOUTH

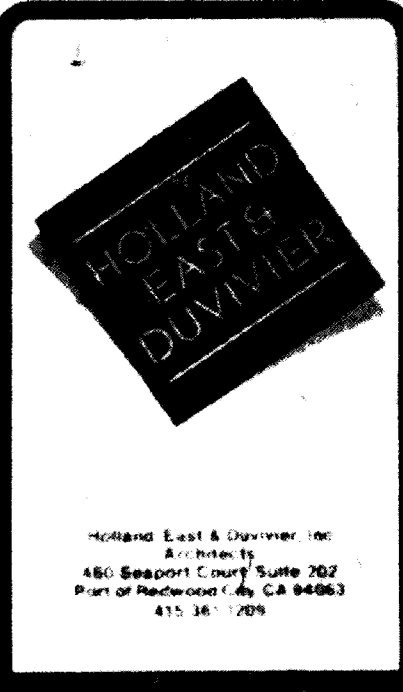
DRAWN	VY
CHECKED	H/JJC
DATE	OCT 24 1986
SCALE	1" = 20'
JOB NO.	86203
SHEET	

E-0.3
 OF SHEETS



POWER DEMOLITION PLAN - MAIN LEVEL
 SCALE: 1/8" = 1'-0"

REVISIONS	BY
10-24-86	
11-86	



Handwritten signature

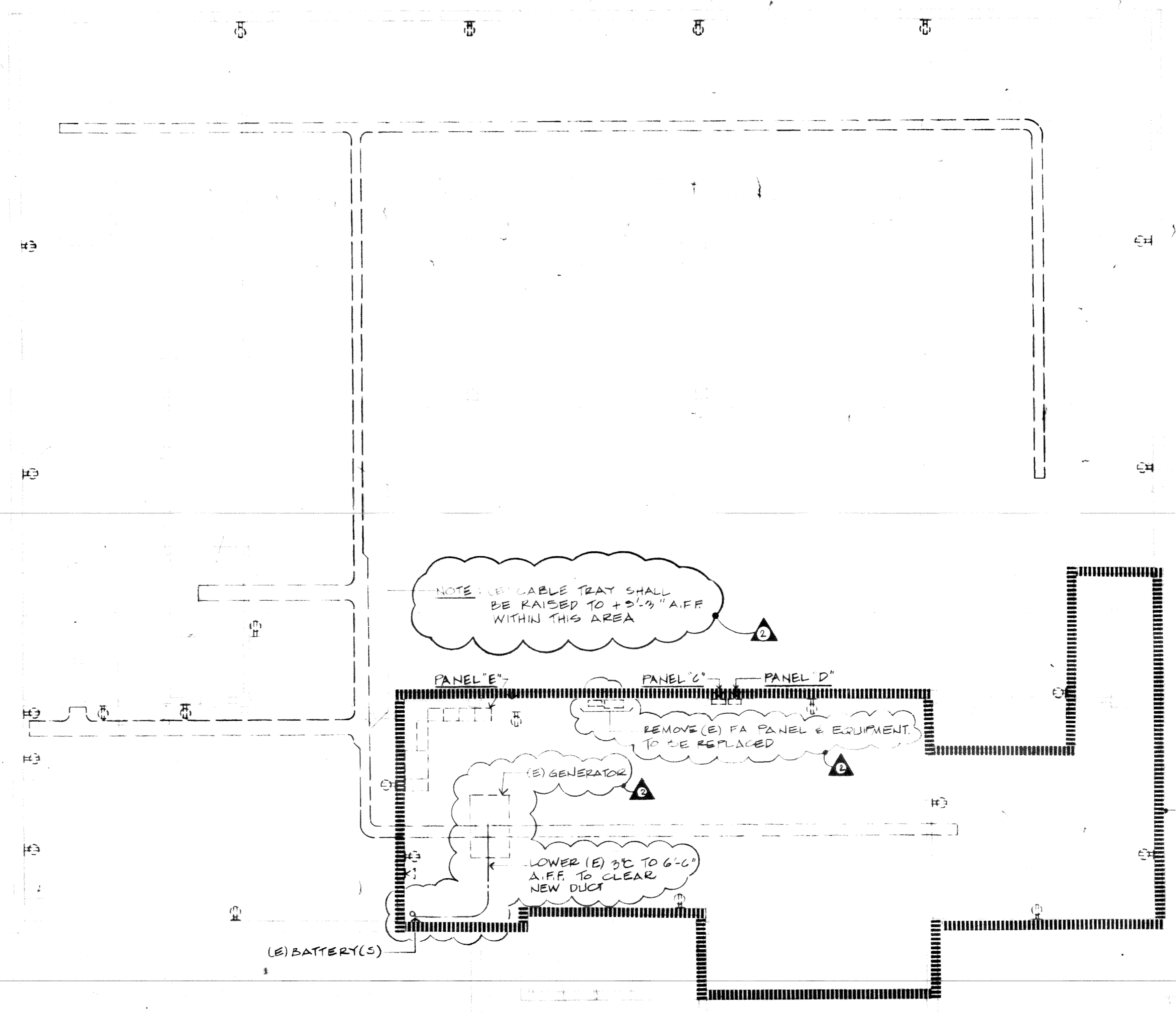
Civic Center Improvements
CITY OF CUPERTINO
 Cupertino, California

CITY HALL
 POWER DEMOLITION
 PLAN - MAIN LEVEL

DRAWN
CHECKED
DATE OCT. 24 1986
SCALE 1/8" = 1'-0"
JOB NO. 82903
SHEET E-1.1

E-1.1
 OF SHEETS

22 23 24 25 26 27 28



1 POWER AND LIGHTING DEMOLITION PLAN - TERRACE
 E12 SCALE: 1/8" = 1'-0"

REVISIONS	BY
10-24-86	
11-2-86	



1000 California Street, Suite 100
 San Francisco, CA 94101
 415 398-1200

DMR Associates, Inc.
 Consulting Engineers
 1880 Geary Ave., San Diego, CA 92103-1000
 (619) 576-1000

Albany

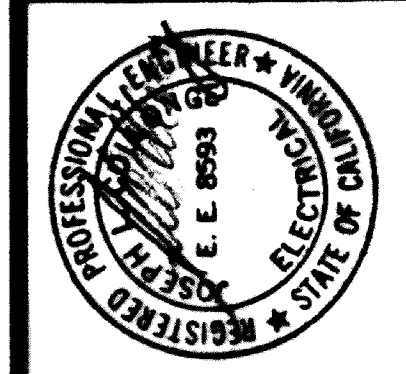
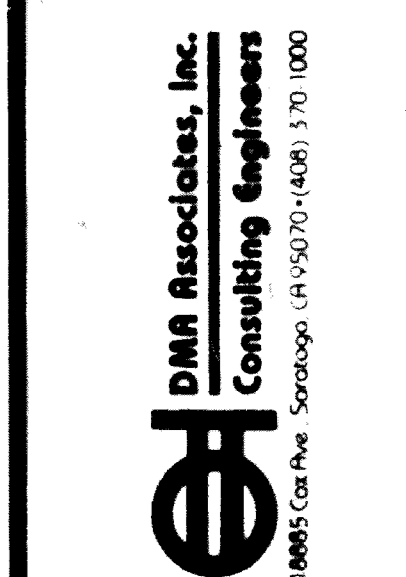
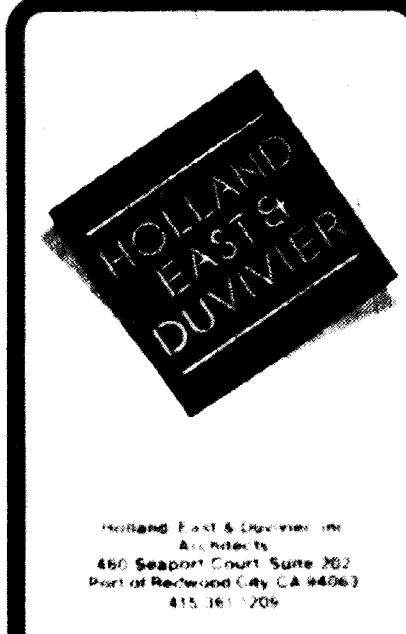
Civic Center Improvements
CITY OF CUPERTINO
 Cupertino, California

CITY HALL
 POWER and LIGHTING
 DEMOLITION PLAN -
 TERRACE LEVEL

DRAWN	✓
CHECKED	TH/JC
DATE	OCT. 24 1986
SCALE	1/8" = 1'-0"
JOB NO.	86203
SHEET	

E-1.2
 OF SHEETS

REVISIONS	BY
1	10-14-86
2	R-86

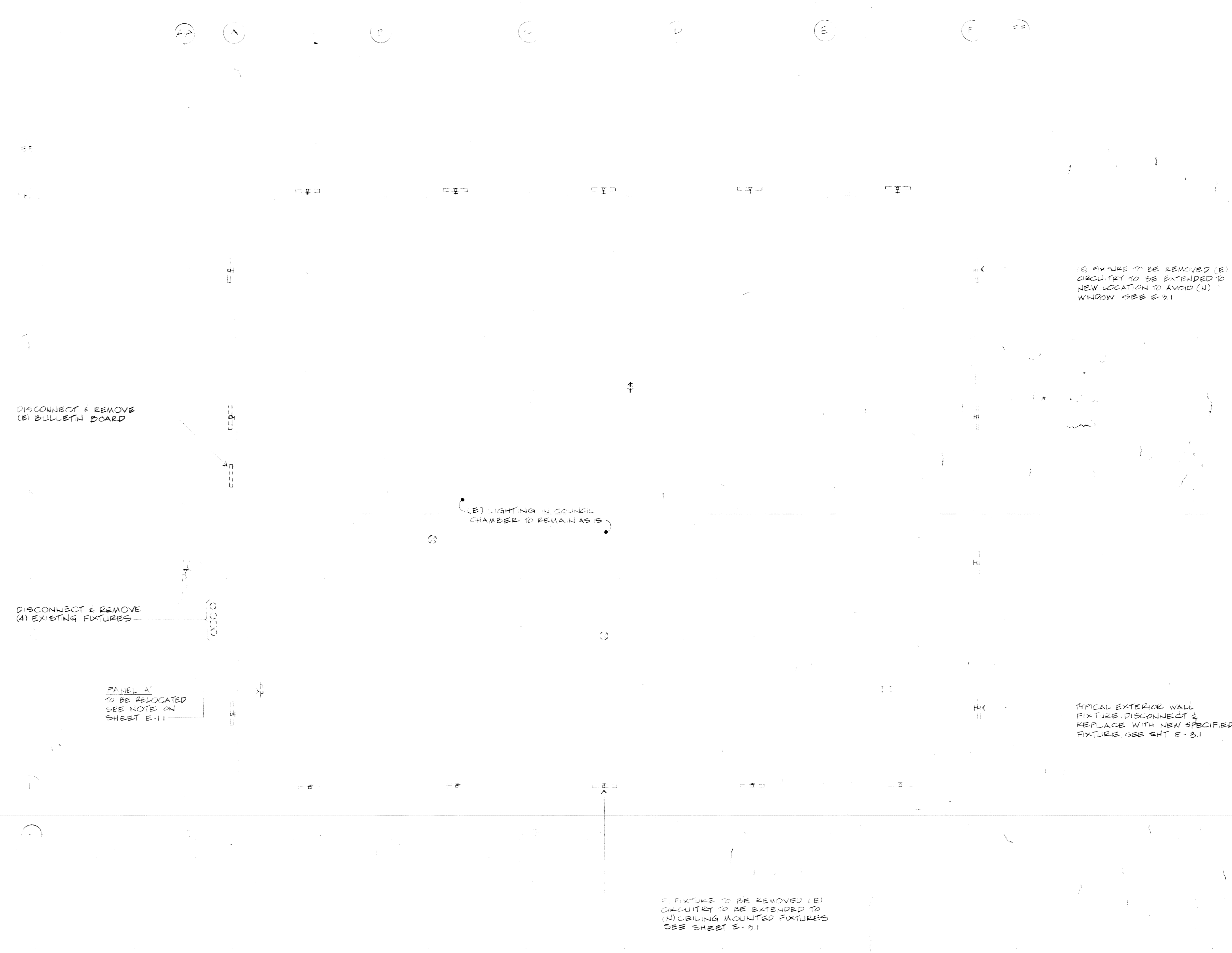


Civic Center Improvements
CITY OF CUPERTINO
 Cupertino, California

CITY HALL
 LIGHTING DEMOLITION
 PLAN -
 MAIN LEVEL

DRAWN	
CHECKED	TH/JC
DATE	OCT. 24, 1986
SCALE	
JOB NO.	86203
SHEET	

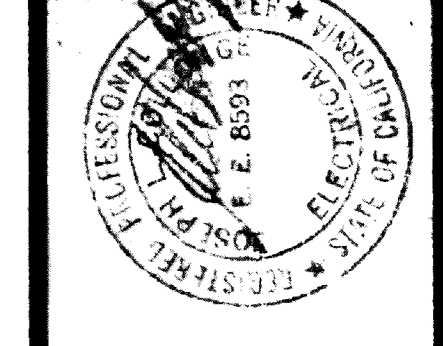
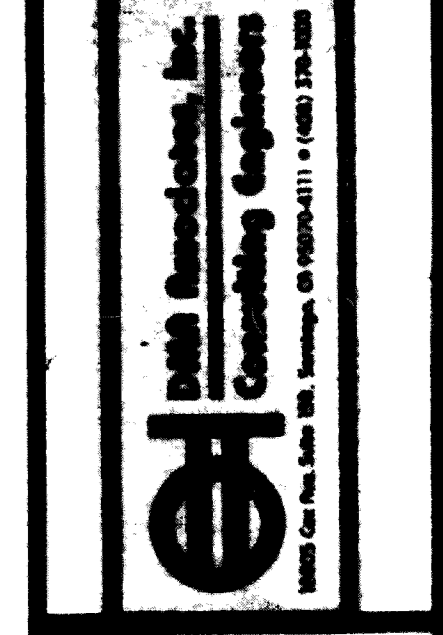
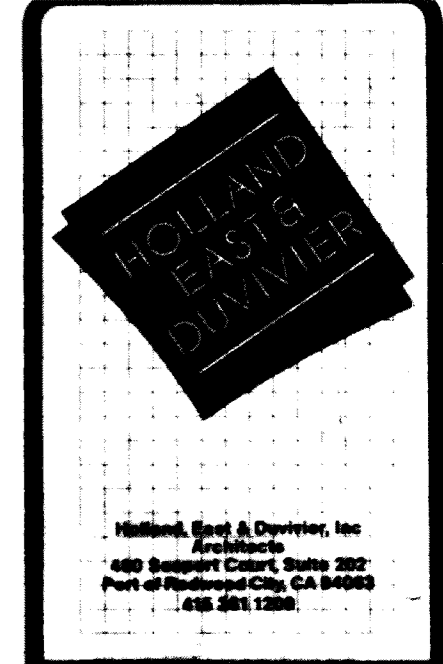
E-1.3
 OF SHEETS



Ⓢ LIGHTING DEMOLITION PLAN - MAIN LEVEL
 SCALE 1/8" = 1'-0"

NOTE ALL LIGHTING FIXTURES SWITCHES & ASSOCIATED CIRCUITRY LOCATED ON MAIN LEVEL (INTERIOR & EXTERIOR) ARE TO BE REMOVED UNLESS SHOWN OR NOTED ON THIS SHEET.

REVISIONS	BY
1	10-24-86
2	11-86

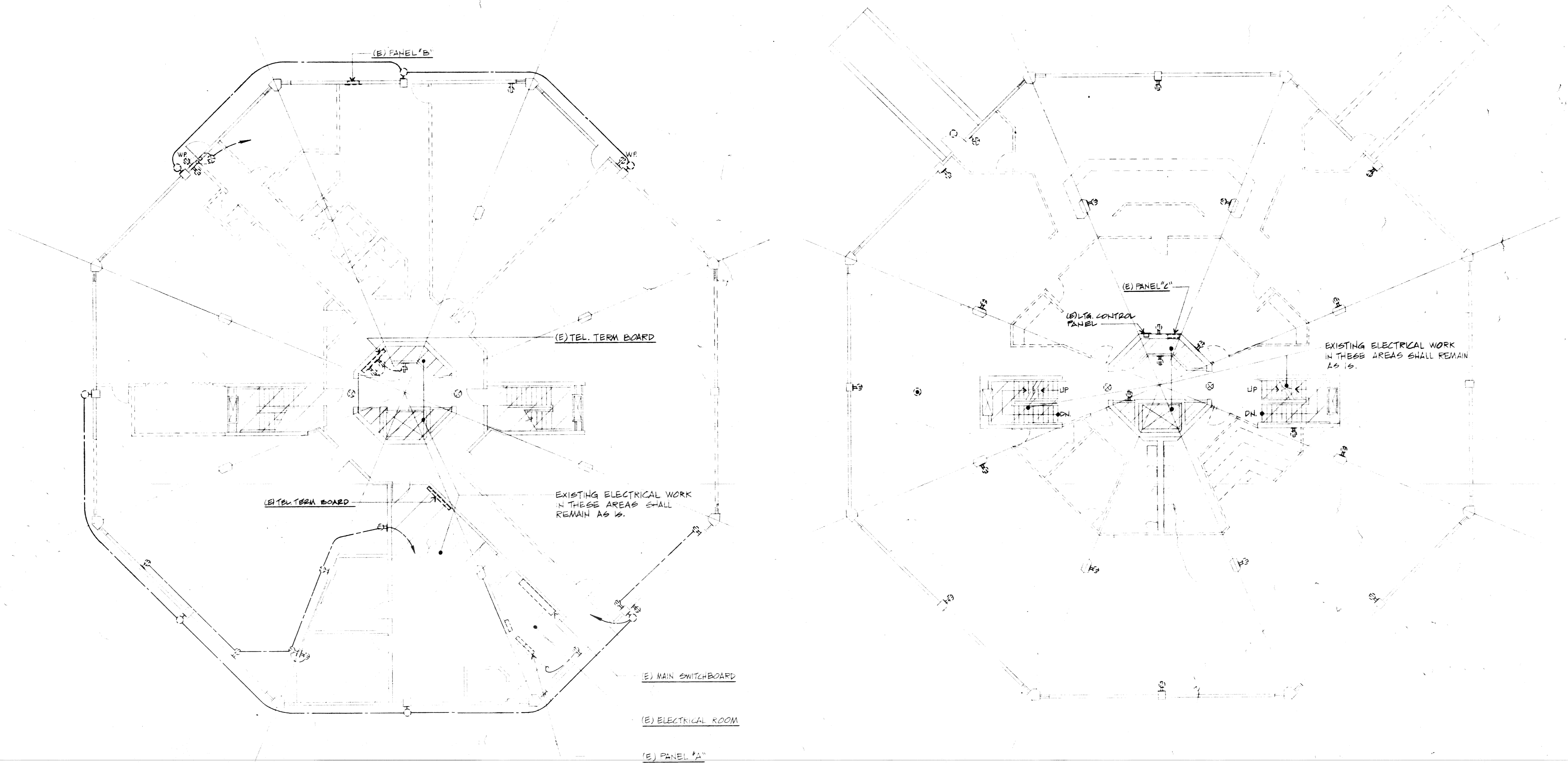


Civic Center Improvements
CITY OF CUPERTINO
 Cupertino, California

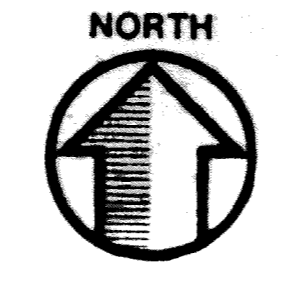
LIBRARY
 POWER and LIGHTING
 DEMOLITION PLAN

DRAWN	P.T.
CHECKED	J.M. ZUC
DATE	OCT 24, 1986
SCALE	AS NOTED
JOB NO.	88203
SHEET	

E-1.4
 OF SHEETS



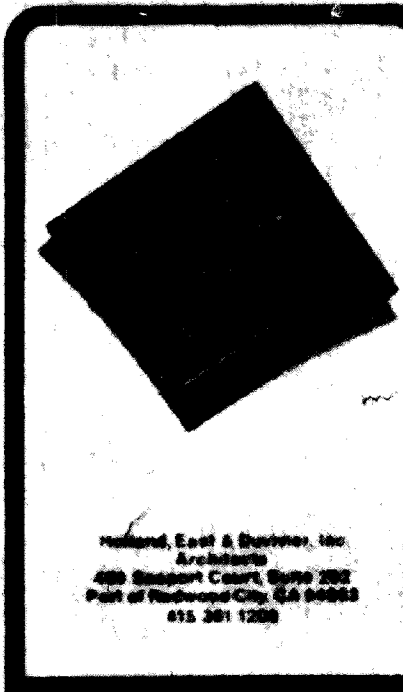
1 DEMOLITION PLAN-TERRACE LEVEL
 SCALE: 1/8" = 1'-0"



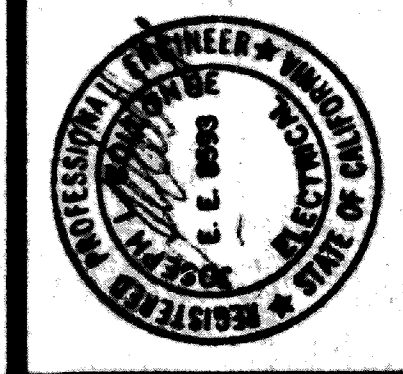
NOTE: ALL ELECTRICAL DEVICES (INCLUDING ASSOCIATED CIRCUITRY) NOT SHOWN ON THIS SHEET WILL BE REMOVED UNLESS NOTED OTHERWISE.

2 DEMOLITION PLAN- MAIN LEVEL
 SCALE: 1/8" = 1'-0"

REVISIONS	BY
1	10-14-86
2	11-86



Dan Associates, Inc.
 Consulting Engineers
 11252
 State of California



Civic Center Improvements
CITY OF CUPERTINO
 Cupertino, California

CITY HALL
 POWER FLOOR PLAN -
 MAIN LEVEL

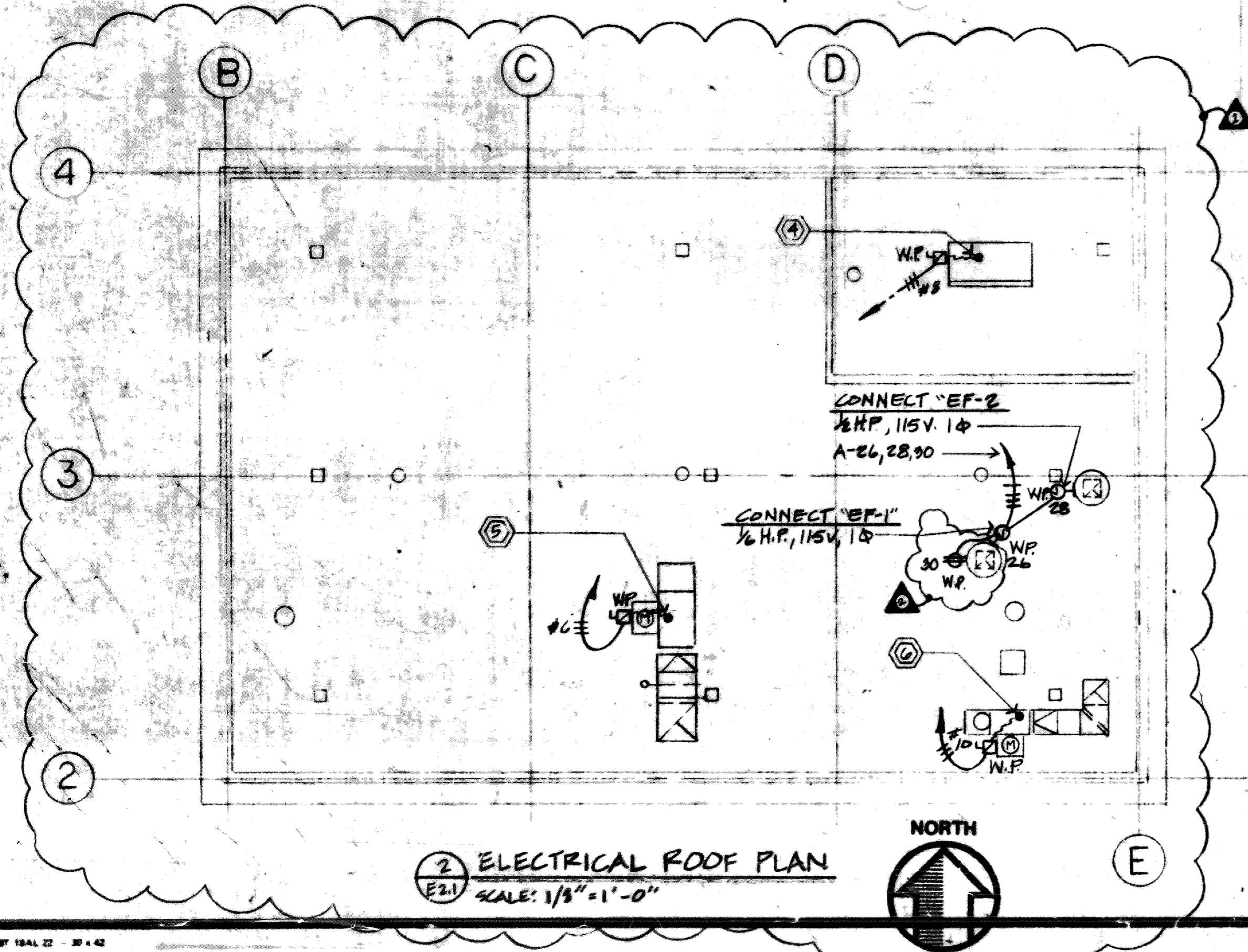
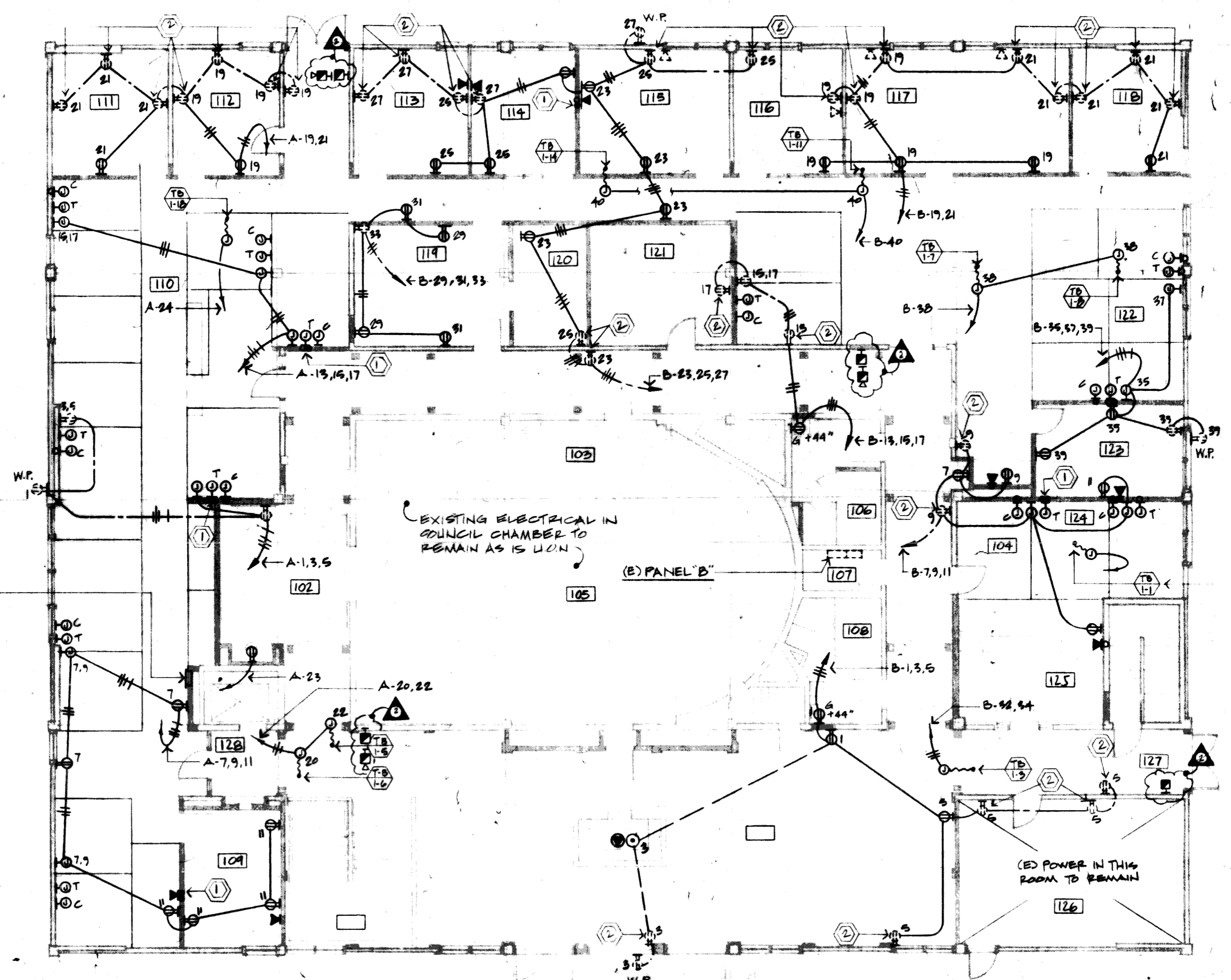
DESIGNED BY: J.E.
 DATE: OCT. 20, 1986
 SCALE: 1/8" = 1'-0"
 JOB NO.: 88106
 SHEET: **E-2.1**

CONSTRUCTION NOTES:

- AT THIS LOCATION, CORE DRILL THROUGH FLOOR FOR TELEPHONE CABLES FROM CABLE TRAY BELOW. DIAMETER OF HOLE AS REQ'D. FOR NUMBER OF CABLES. PRIOR TO ANY CORE DRILLING, CONSULT ARCHITECT OR STRUCTURAL ENGINEER.
- TYPICAL EXISTING RECEPTACLE. REPLACE EXISTING DEVICE AND PLATE W/SPECIFIED RECEPTACLE/PLATE. SEE NOTES SHEET E-0.1.
- SHOWS TERMINAL BOX NUMBER, REQUIRING ELECTRICAL CONNECTION. SEE MECHANICAL BRAMING FOR EXACT LOCATION(S). TYPICAL FOR ALL THE SYMBOLS SHOWN ON THIS SHEET.
- CONNECT COOLING TOWER "CT-1": 7 1/2 HP, 208V, 3Ø REPLACE (E) W.P. DISCONNECT W/ (N) 60-SP W.P. DISCONNECT. RUN (3) #8 THHN CU IN (E) 3/4" C. TO (E) PANEL "G". (LOCATED IN BASEMENT ELECTRICAL ROOM.) REPLACE (E) BREAKER W/ (N) 60A-3P BREAKER. (TO MATCH EXISTING TYPE) (E) STARTER TO REMAIN BUT OVERCURRENT DEVICES TO BE CHANGED OUT TO APPROPRIATE SIZE.
- CONNECT EXHAUST FAN "EF-1": 10 HP, 208V, 3Ø SUPPLY & INSTALL (N) 70A-3P W.P. DISCONNECT & ROOF UNIT. RUN (N) 3/4" C. W/ (3) #8 THHN CU DOWN TO (E) PANEL "G". SUPPLY AND INSTALL (N) SIZE 2 STARTER & (N) 70A-3P BREAKER IN (E) PANEL "G".
- CONNECT EXHAUST FAN "EF-2": 3 HP, 208V, 3Ø. SUPPLY & INSTALL (E) W.P. 3Ø-3P DISCONNECT & ROOF UNIT. RUN (N) 1/2" C. W/ (3) #10 THHN CU DOWN TO (E) PANEL "G". SUPPLY & INSTALL (N) SIZE 1 STARTER AND (N) 30A-3P BREAKER IN (E) PANEL "G".

ROOM SCHEDULE

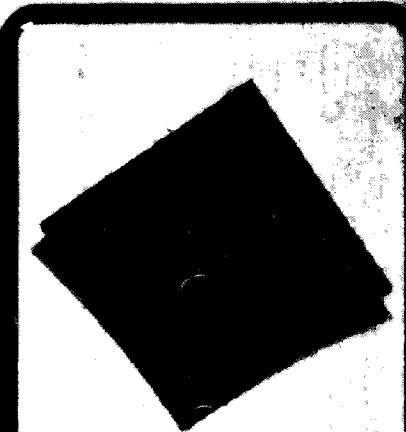
NO.	ROOM
101	LOBBY
102	CORRIDOR
103	CORRIDOR
104	CORRIDOR
105	COUNCIL
106	WOMEN
107	JANITOR
108	OFFICE
109	OFFICE ACCOUNTING
110	COMPUTER
111	OFFICE
112	OFFICE
113	CONFERENCE
114	OFFICE
115	OFFICE
116	OFFICE
117	OFFICE
118	OFFICE
119	OFFICE
120	OFFICE
121	OFFICE
122	OFFICE
123	OFFICE
124	OFFICE
125	OFFICE
126	OFFICE
127	OFFICE
128	OFFICE
129	OFFICE
130	OFFICE
131	OFFICE
132	OFFICE
133	OFFICE
134	OFFICE
135	OFFICE
136	OFFICE
137	OFFICE
138	OFFICE
139	OFFICE
140	OFFICE
141	OFFICE
142	OFFICE
143	OFFICE
144	OFFICE
145	OFFICE
146	OFFICE
147	OFFICE
148	OFFICE
149	OFFICE
150	OFFICE
151	OFFICE
152	OFFICE
153	OFFICE
154	OFFICE
155	OFFICE
156	OFFICE
157	OFFICE
158	OFFICE
159	OFFICE
160	OFFICE
161	OFFICE
162	OFFICE
163	OFFICE
164	OFFICE
165	OFFICE
166	OFFICE
167	OFFICE
168	OFFICE
169	OFFICE
170	OFFICE
171	OFFICE
172	OFFICE
173	OFFICE
174	OFFICE
175	OFFICE
176	OFFICE
177	OFFICE
178	OFFICE
179	OFFICE
180	OFFICE
181	OFFICE
182	OFFICE
183	OFFICE
184	OFFICE
185	OFFICE
186	OFFICE
187	OFFICE
188	OFFICE
189	OFFICE
190	OFFICE
191	OFFICE
192	OFFICE
193	OFFICE
194	OFFICE
195	OFFICE
196	OFFICE
197	OFFICE
198	OFFICE
199	OFFICE
200	OFFICE



1 POWER FLOOR PLAN - MAIN LEVEL
 SCALE 1/8" = 1'-0"
 NORTH

2 ELECTRICAL ROOF PLAN
 SCALE 1/8" = 1'-0"
 NORTH

REVISIONS	BY
1	10-11-86
2	12-3-86



Professional Seal & Signature of
 Electrical Engineer
 License No. 10000
 State of California
 445 2nd St.
 San Francisco, CA 94102

RAM Associates, Inc.
 Consulting Engineers
 1400 California Street, Suite 100
 San Francisco, CA 94109



Civic Center Improvements
CITY OF CUPERTINO
 Cupertino, California

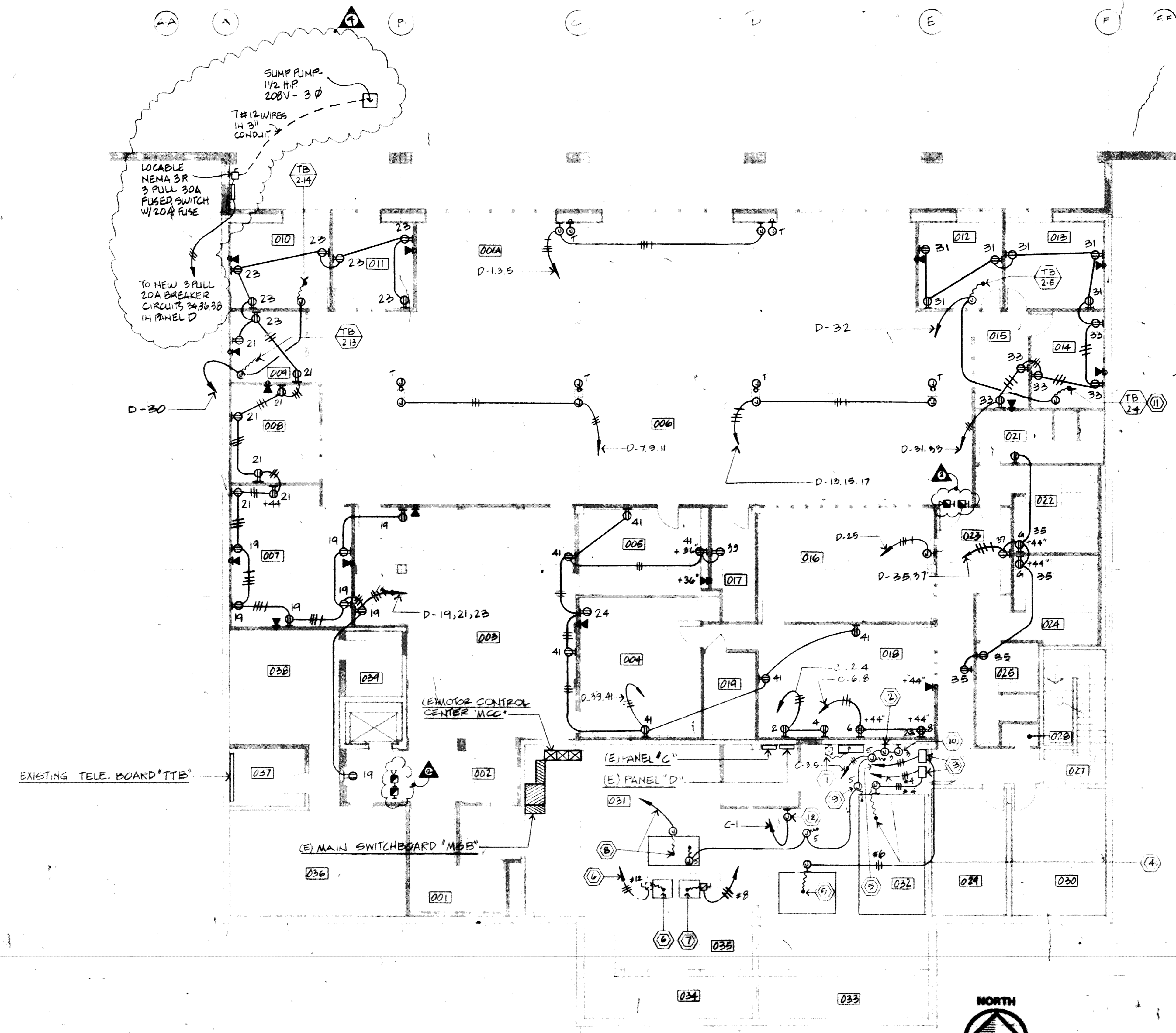
CITY HALL
 POWER FLOOR PLAN -
 TERRACE LEVEL

DATE	SCALE	BY	CHECKED
OCT. 24 1986	1/8" = 1'-0"	BR/BJ	BR/BJ

E-2.2

- CONSTRUCTION NOTES:**
- CONNECT CONTROL AIR COMPRESSOR "CAC-1": 1 HP, 208V, 30 DISCONNECT (E) 1 HP, 208V, 30 COMPRESSOR AND CONNECT (N) COMPRESSOR. REVISE (R) CIRCUITRY & DEVICES, ADAPT/EXTEND AS REQUIRED.
 - CONNECT TEMPERATURE CONTROL PANEL 120V
 - VARIABLE SPEED DRIVES FOR "AH1 & AH2". SUPPLIED BY MECHANICAL CONTRACTOR AND INSTALLED BY ELECTRICAL CONTRACTOR.
 - CONNECT "AH-1": 20 HP, 208V, 30, VIA VARIABLE SPEED DRIVE. RUN 1" C W/(3144 THHN CU TO (E) "MCC". DISCONNECT AND REMOVE (E) BREAKER AND INSTALL (N) 100A-3P "MOTOR CIRCUIT PROTECTOR" TYPE BREAKER AND CHANGE (E) OVER CURRENT DEVICES IN (E) STARTERS.
 - CONNECT "AH-2": 7.5 HP, 208V, 30, VIA VARIABLE SPEED DRIVE. RUN 3/4" C W/(3) #8 THHN CU TO (E) "MCC". DISCONNECT & REMOVE (E) BREAKER AND INSTALL (N) 40A-3P "MOTOR CIRCUIT PROTECTOR" TYPE BREAKER AND CHANGE (E) OVER CURRENT DEVICES IN (E) STARTER.
 - CONNECT "CHP-1" CHILLER PUMP: 3 HP, 208V, 30, DISCONNECT (E) 3HP, 208V, 30 PUMP AND CONNECT (N) CHILLER PUMP. ADAPT/EXTEND (E) CIRCUITRY AS REQUIRED. (E) BREAKER & STARTERS TO BE REUSED.
 - CONNECT PUMP "CP-1": 7.5 HP, 208V, 30, DISCONNECT & REPLACE (E) BREAKER & "MCC" W/(N) 30A-30P, "MOTOR CIRCUIT PROTECTOR" TYPE. REPLACE (E) OVER CURRENT DEVICES IN (E) STARTERS W/(N) PROPERLY SIZED DEVICES. REMOVE (R) #12 WIRE & INSTALL (3) NEW #8 THHN CU IN (E) 3/4" C. EXTEND/ADAPT (E) CONDUIT IF REQUIRED.
 - CONNECT CHILLER "CH-1": 65KW, 208V, 30 RUN (1) 2" C W/(3) #350 MCM CU TO (E) "MCC". DISCONNECT & REMOVE (E) 200A-3P BREAKER & INSTALL (N) 400-3P BREAKER.
 - CONNECT SMOKE DETECTOR(S) 120V, SUPPLIED BY MECH. (TYPICAL FOR 4)
 - CONNECT TIME DELAY RELAY SUPPLIED BY MECH. 120V
 - RENOTES TERMINAL BOX REQUIRING ELECTRICAL CONNECTION. SEE MECH DRAWINGS FOR EXACT LOCATION(S). TYPICAL FOR ALL TERMINAL BOXES ON THIS SHEET.
 - CONNECT "COOLING TOWER CHEMICAL TREATMENT" 120V.

TERMINAL BOX	DESCRIPTION
001	WH. TOILET
002	COMBINATION
003	WH. TOILET
004	WH. TOILET
005	WH. TOILET
006	WH. TOILET
007	WH. TOILET
008	WH. TOILET
009	WH. TOILET
010	WH. TOILET
011	WH. TOILET
012	WH. TOILET
013	WH. TOILET
014	WH. TOILET
015	WH. TOILET
016	WH. TOILET
017	WH. TOILET
018	WH. TOILET
019	WH. TOILET
020	WH. TOILET
021	WH. TOILET
022	WH. TOILET
023	WH. TOILET
024	WH. TOILET
025	WH. TOILET
026	WH. TOILET
027	WH. TOILET
028	WH. TOILET
029	WH. TOILET
030	WH. TOILET
031	WH. TOILET
032	WH. TOILET
033	WH. TOILET
034	WH. TOILET
035	WH. TOILET
036	WH. TOILET
037	WH. TOILET
038	WH. TOILET
039	WH. TOILET
040	WH. TOILET
041	WH. TOILET
042	WH. TOILET
043	WH. TOILET
044	WH. TOILET
045	WH. TOILET
046	WH. TOILET
047	WH. TOILET
048	WH. TOILET
049	WH. TOILET
050	WH. TOILET
051	WH. TOILET
052	WH. TOILET
053	WH. TOILET
054	WH. TOILET
055	WH. TOILET
056	WH. TOILET
057	WH. TOILET
058	WH. TOILET
059	WH. TOILET
060	WH. TOILET
061	WH. TOILET
062	WH. TOILET
063	WH. TOILET
064	WH. TOILET
065	WH. TOILET
066	WH. TOILET
067	WH. TOILET
068	WH. TOILET
069	WH. TOILET
070	WH. TOILET
071	WH. TOILET
072	WH. TOILET
073	WH. TOILET
074	WH. TOILET
075	WH. TOILET
076	WH. TOILET
077	WH. TOILET
078	WH. TOILET
079	WH. TOILET
080	WH. TOILET
081	WH. TOILET
082	WH. TOILET
083	WH. TOILET
084	WH. TOILET
085	WH. TOILET
086	WH. TOILET
087	WH. TOILET
088	WH. TOILET
089	WH. TOILET
090	WH. TOILET
091	WH. TOILET
092	WH. TOILET
093	WH. TOILET
094	WH. TOILET
095	WH. TOILET
096	WH. TOILET
097	WH. TOILET
098	WH. TOILET
099	WH. TOILET
100	WH. TOILET



1 POWER FLOOR PLAN-TERRACE LEVEL
 SCALE 1/8" = 1'-0"

FIRE ALARM Contractor shall furnish and install a complete fire alarm system utilizing new components, wiring, devices and signaling systems in accordance with the plan and all applicable codes. Furnish all necessary equipment, wiring, conduit and installation materials as required for a complete fire alarm system whether or not specified. All equipment shall be supplied and installed by the factory approved distributor and shall be warranted for one year from the date of acceptance.

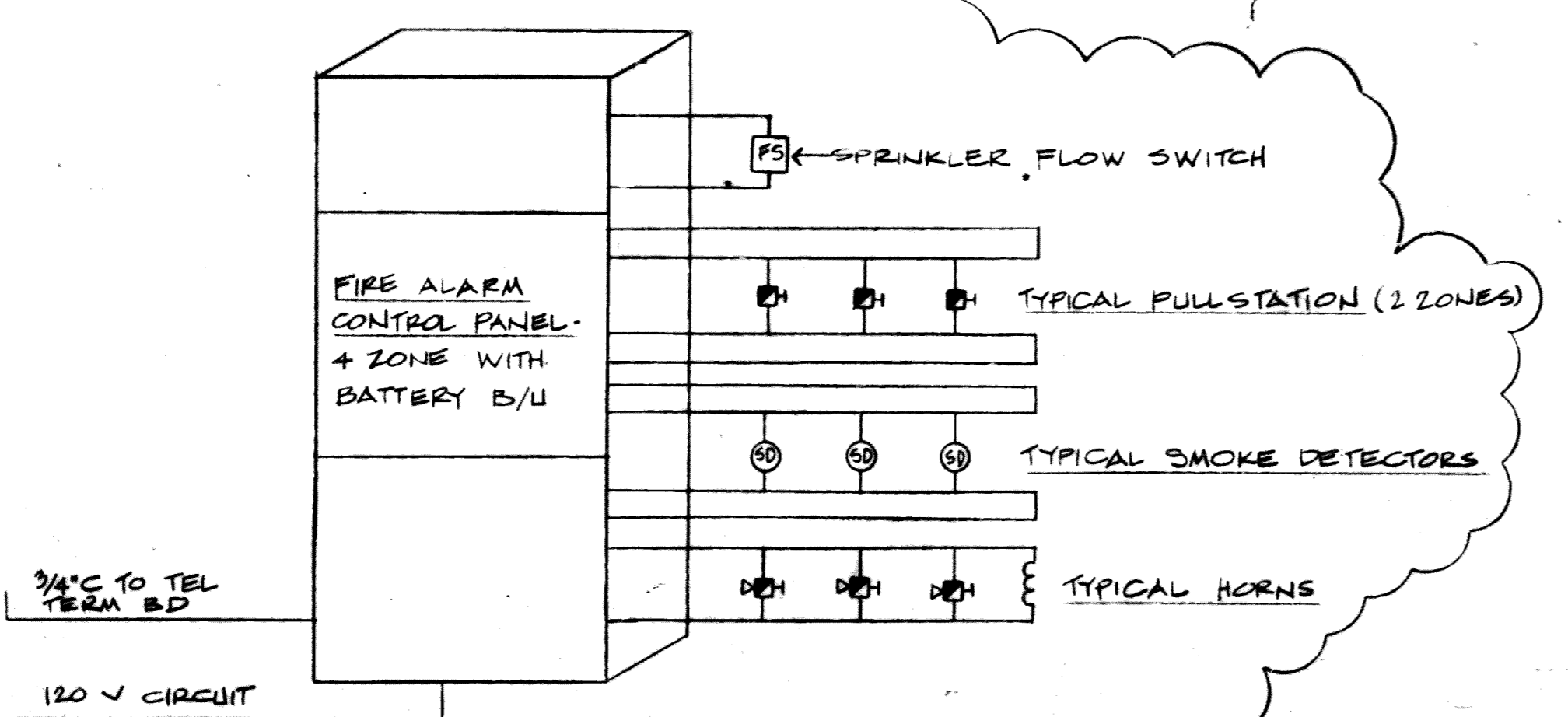
Fire Alarm System: The local fire alarm system shall incorporate manual pull stations, horns and visual indicators. The manufacturer of the fire alarm system being specified shall be that manufactured by Fire Lite, Fire Control Instruments, Simplex, or approved equal.

Control Panel: Shall be Fire Lite "Semicon 190" or approved equal. The control panel shall be accessible to 12 zones without the need for manual operation. The panel shall include all necessary equipment to include, but not limited to: master control card (2-14 zones); Class "A" initiating circuits; power supply; battery back up with charger (batteries shall be housed within the fire alarm panel); signal module; and remote alarm output contacts.

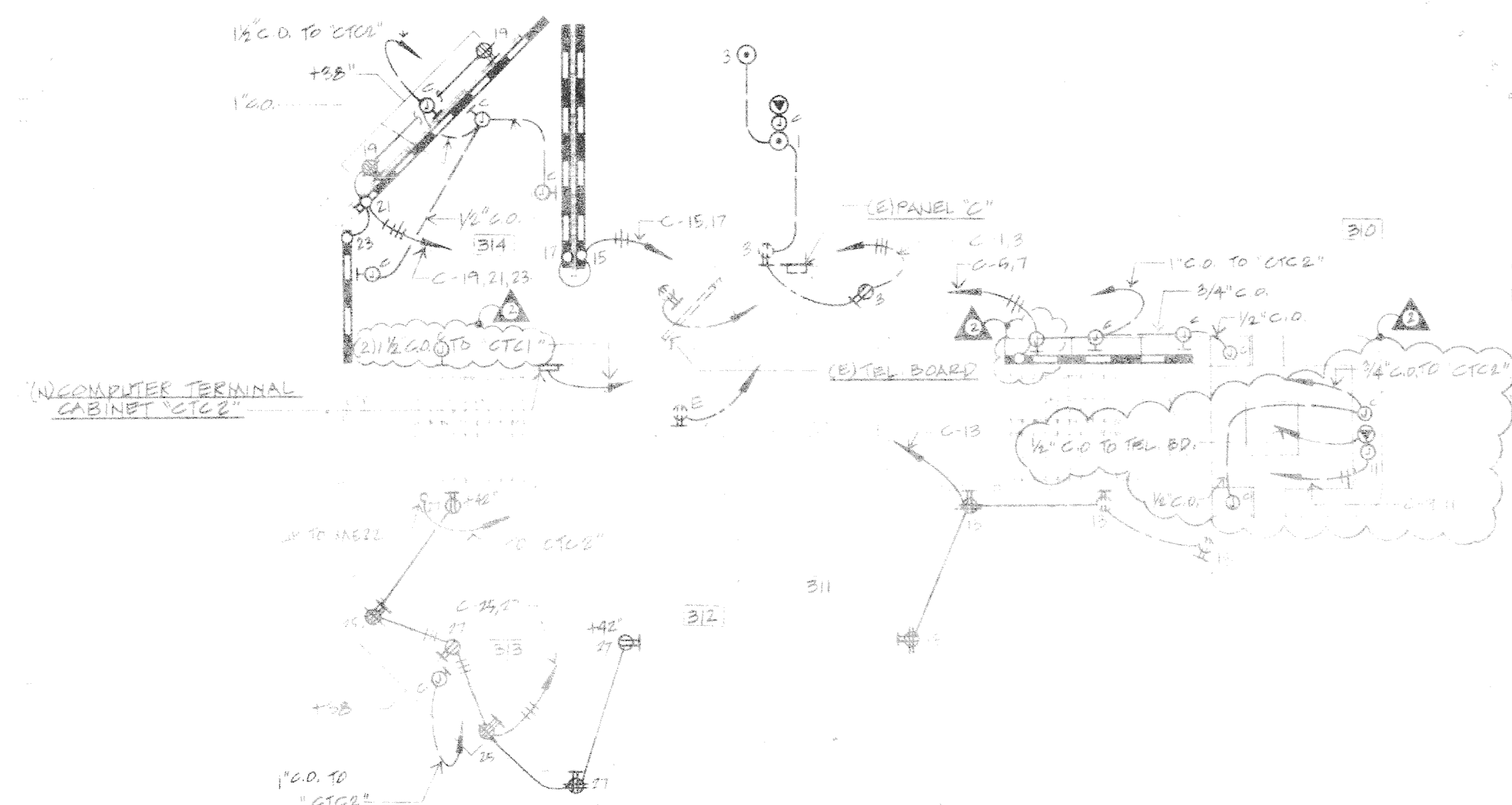
Pull Station: Shall be Fire Lite 80-197 or approved equal.

Speaker-Horn units: Federal Signal Corp Model 450 or approved equal fire alarm units.

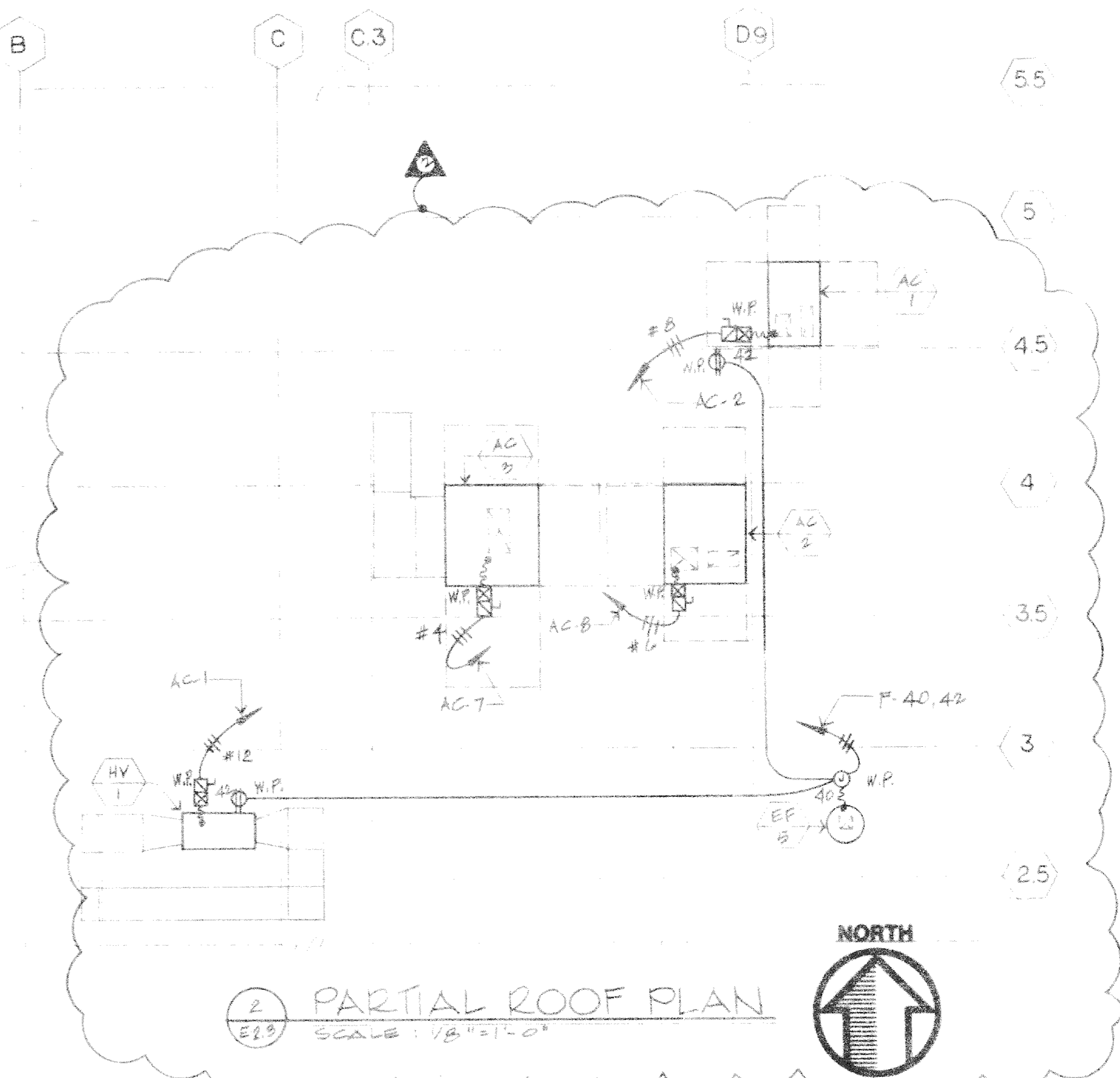
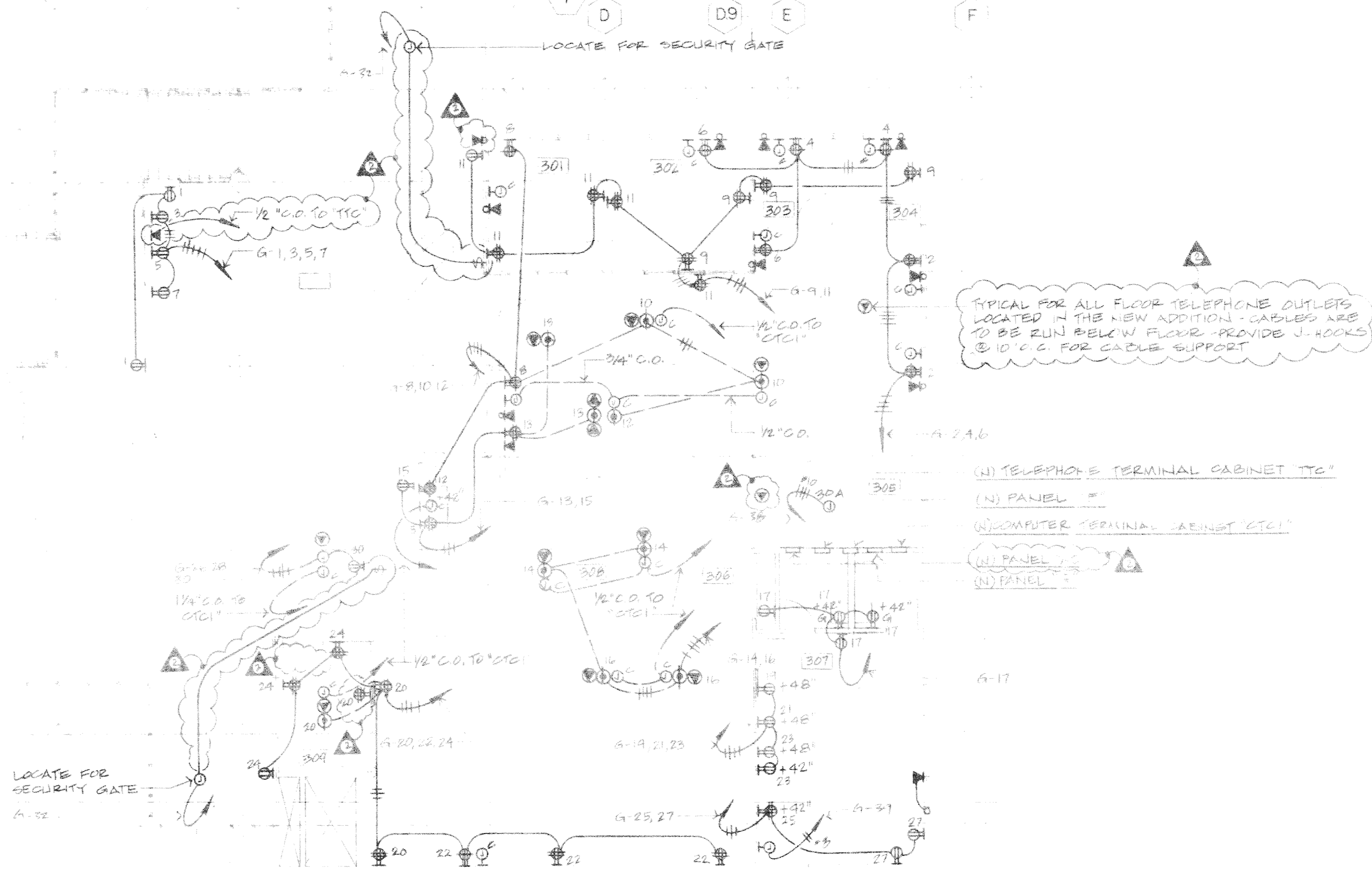
All equipment shall be UL and California State Fire Marshal Listed.



2 FIRE ALARM CONTROL DIAGRAM
 ALL CIRCUITS 14" TW IN CONDUITS

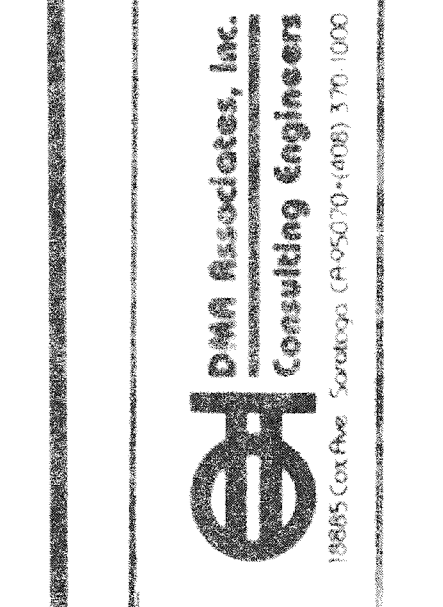
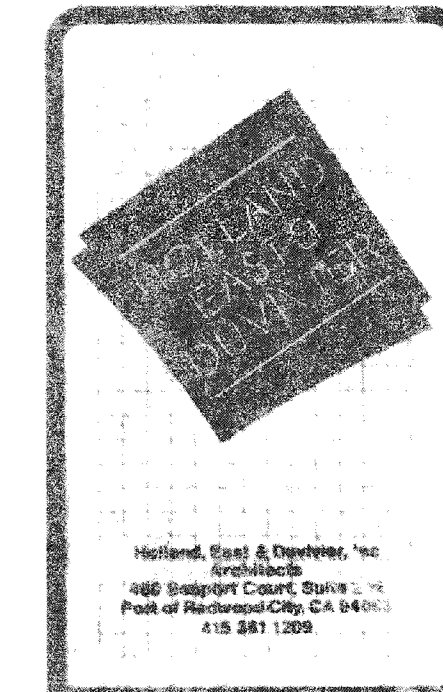


1 POWER FLOOR PLAN-MAIN LEVEL
SCALE: 1/8" = 1'-0"



2 PARTIAL ROOF PLAN
SCALE: 1/8" = 1'-0"

NO.	REVISIONS	BY
1	10-24-77	
2	11-28-77	



Handwritten notes and signatures.

Civic Center Improvements
CITY OF CUPERTINO
Cupertino, California

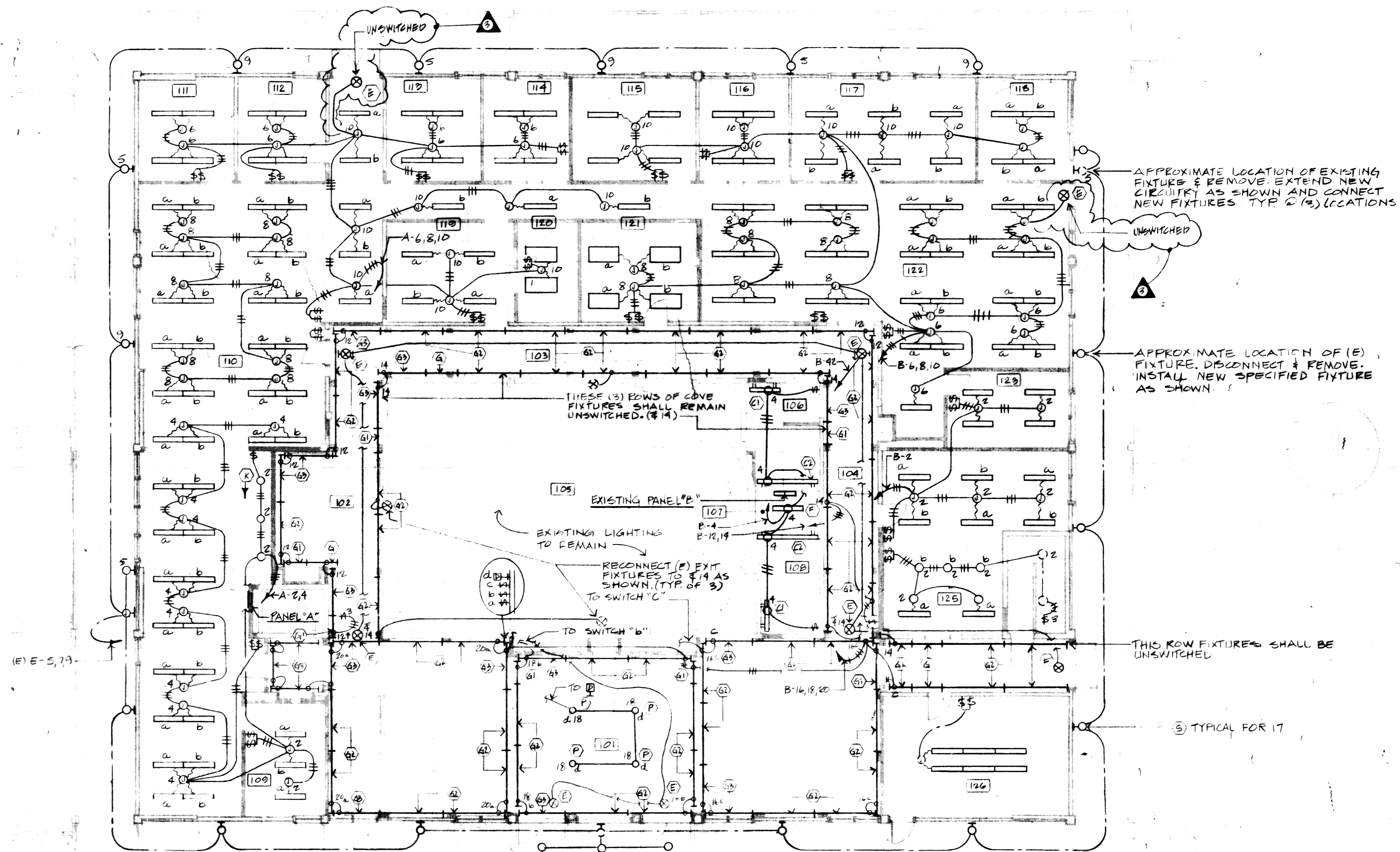
LIBRARY
POWER FLOOR PLAN -
MAIN LEVEL

DESIGNED	
CHECKED	
DATE	
SCALE	
JOB NO.	
SHEET	

E-2.3

REVISED COPY

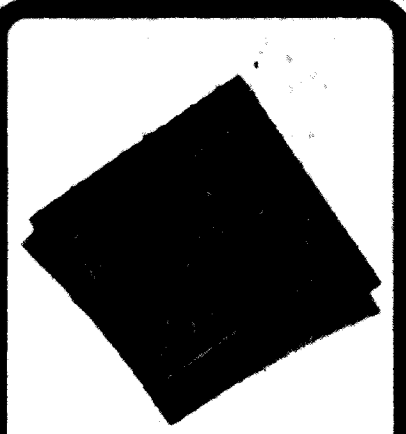
ROOM SCHEDULE	
NO.	ROOM
101	LOBBY
102	CORRIDOR
103	CORRIDOR
104	CORRIDOR
105	COUNCIL
106	WOMEN
107	JANITOR
108	MEN
109	OFFICE
110	OPEN OFFICE ACCOUNTING
111	COMPUTER
112	OFFICE
113	OFFICE
114	CONFERENCE
115	OFFICE
116	OFFICE
117	OFFICE
118	OFFICE
119	DUPLICATION
120	MICROFILM
121	STORAGE
122	OPEN OFFICE
123	OFFICE
124	OFFICE
125	LOBBY
126	CONFERENCE



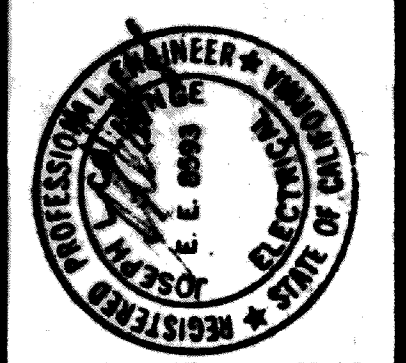
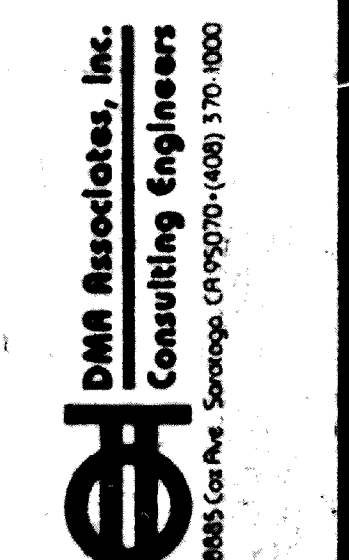
① LIGHTING FLOOR PLAN - MAIN LEVEL
SCALE: 1/8" = 1'-0"

NOTE:
ALL FIXTURES SHOWN ON THIS PLAN SHALL BE TYPE "A" UNLESS NOTED OTHERWISE.

REVISIONS	BY
1	0-24-66
2	11-18-66
3	11-21-66



DMR Associates, Inc.
Consulting Engineers
1000 California Street, Suite 1000
San Francisco, California 94108
415 398 7300



Civic Center Improvements
CITY OF CUPERTINO
Cupertino, California

CITY HALL
LIGHTING FLOOR PLAN -
MAIN LEVEL

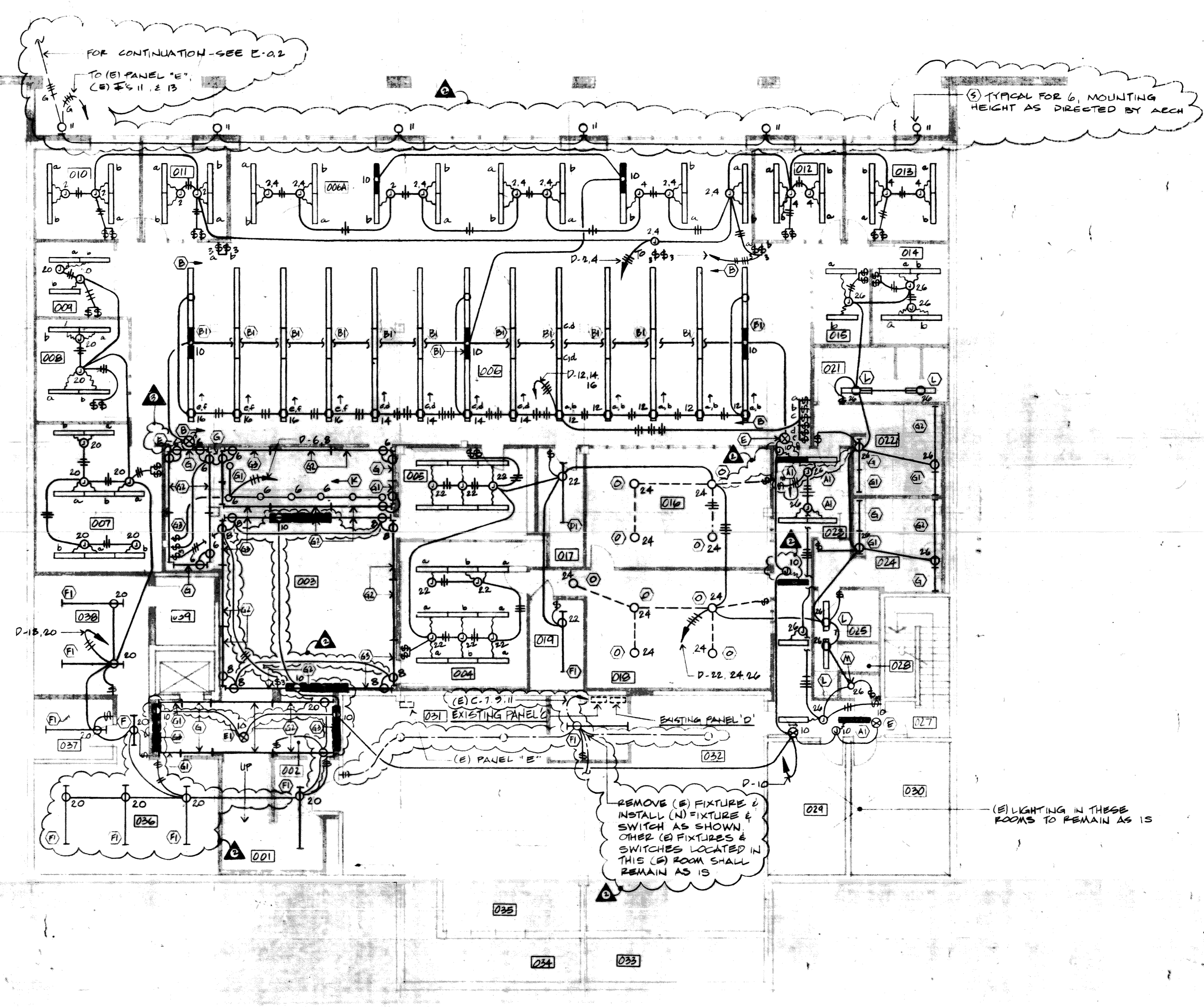
DRAWN
CHECKED
DATE
Oct 24, 1966
SCALE
1/8" = 1'-0"
JOB NO.
08209
SHEET

E-3.1

034 SHEETS

ROOM SCHEDULE

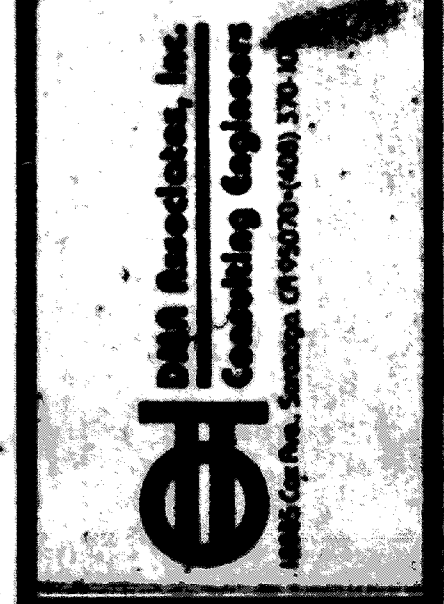
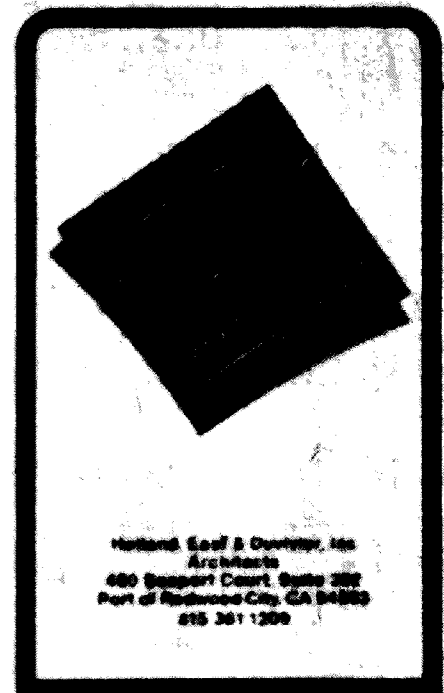
NO.	ROOM
001	STAIRS
002	FOYER
003	LOWER LOBBY
004	MEETING
005	CONFERENCE
006	OPEN OFFICE
007	OFFICE
008	OFFICE
009	OFFICE
010	OFFICE
011	OFFICE
012	OFFICE
013	OFFICE
014	OFFICE
015	OFFICE
016	R.C.C.
017	BLUE-PRINT
018	LOUNGE
019	EQUIPMENT
020	W.M. SHOWER
021	STAIR
022	JANITOR
023	TRAFF
024	CATV
025	MECH
026	BOILER
027	STORAGE
028	TELEPHONE
029	MACH
030	TRANSFORMER



① LIGHTING FLOOR PLAN - TERRACE LEVEL
SCALE

NOTE: ALL FIXTURE ON THIS SHEET ARE TYPE 'A' UNLESS OTHERWISE NOTED.

REVISIONS	BY
1	11/8/86
2	10/24/86
3	11-21-86



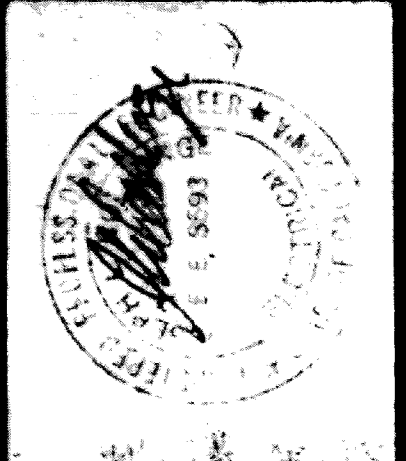
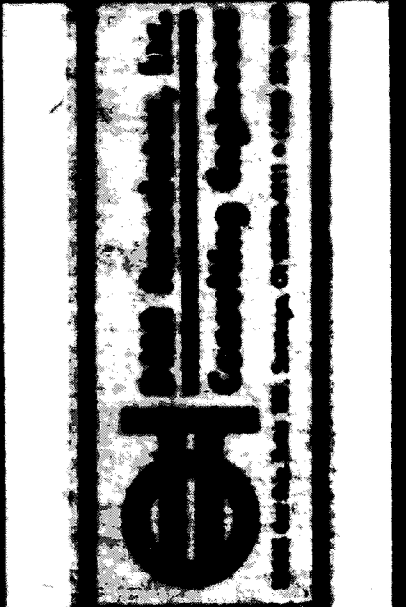
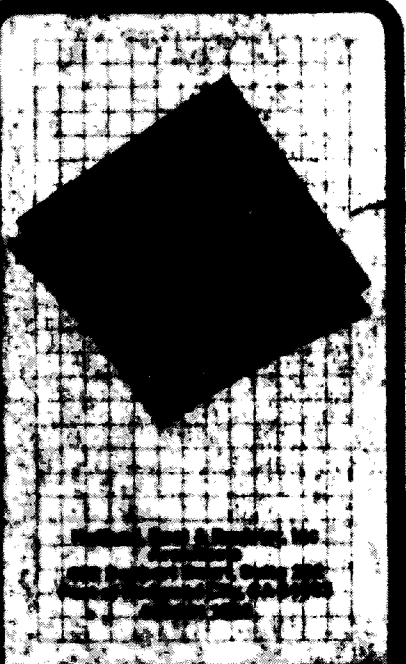
Civic Center Improvements
CITY OF CUPERTINO
Cupertino, California

CITY HALL
LIGHTING FLOOR PLAN
- TERRACE

DRAWN	BY
CHECKED	TH./J.C.
DATE	OCT. 24, 1986
SCALE	1/8" = 1'-0"
JOB NO.	86205
SHEET	

E-3.2

REVISIONS	BY
10-24-86	
11-18-86	
11-21-86	

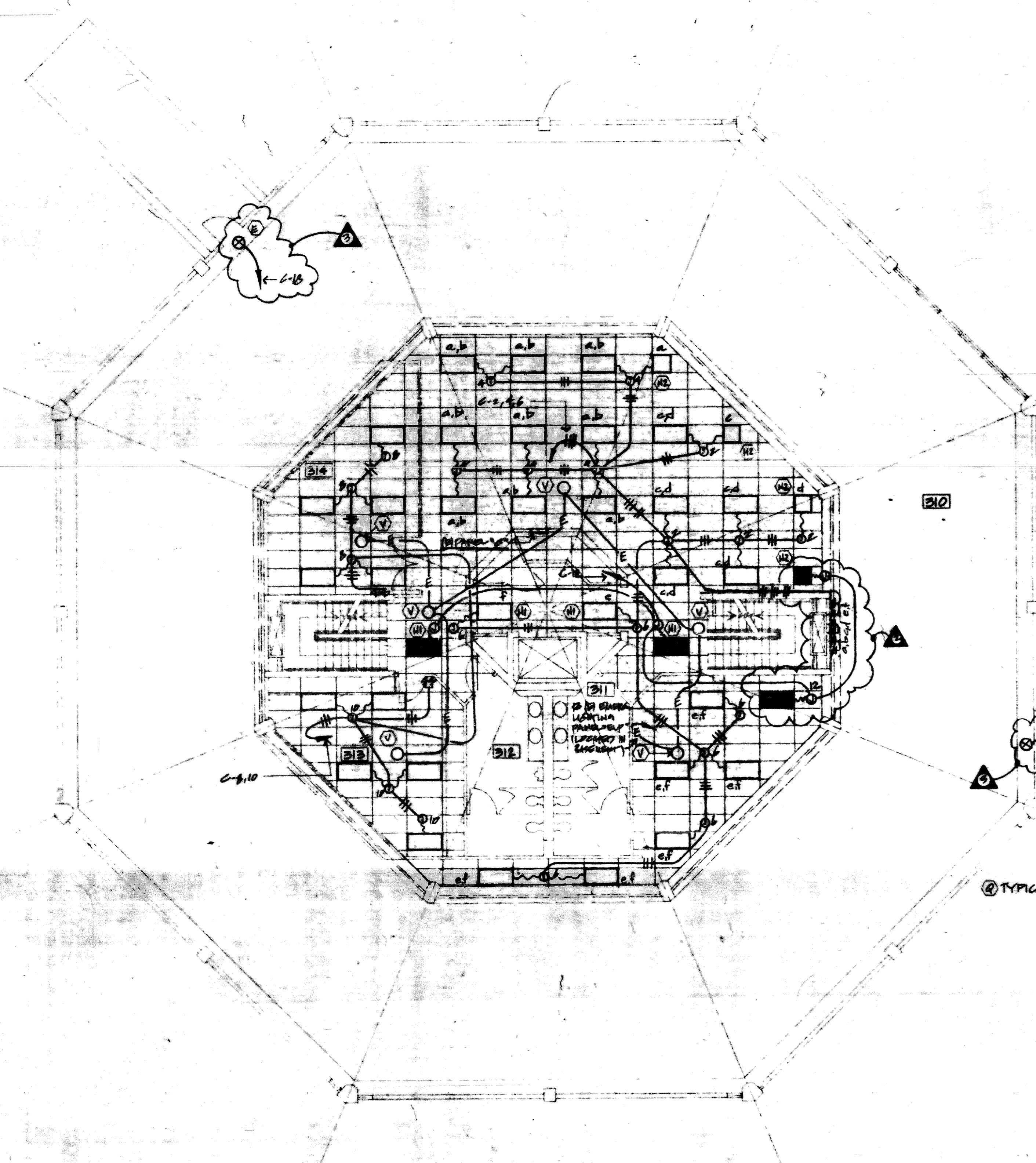
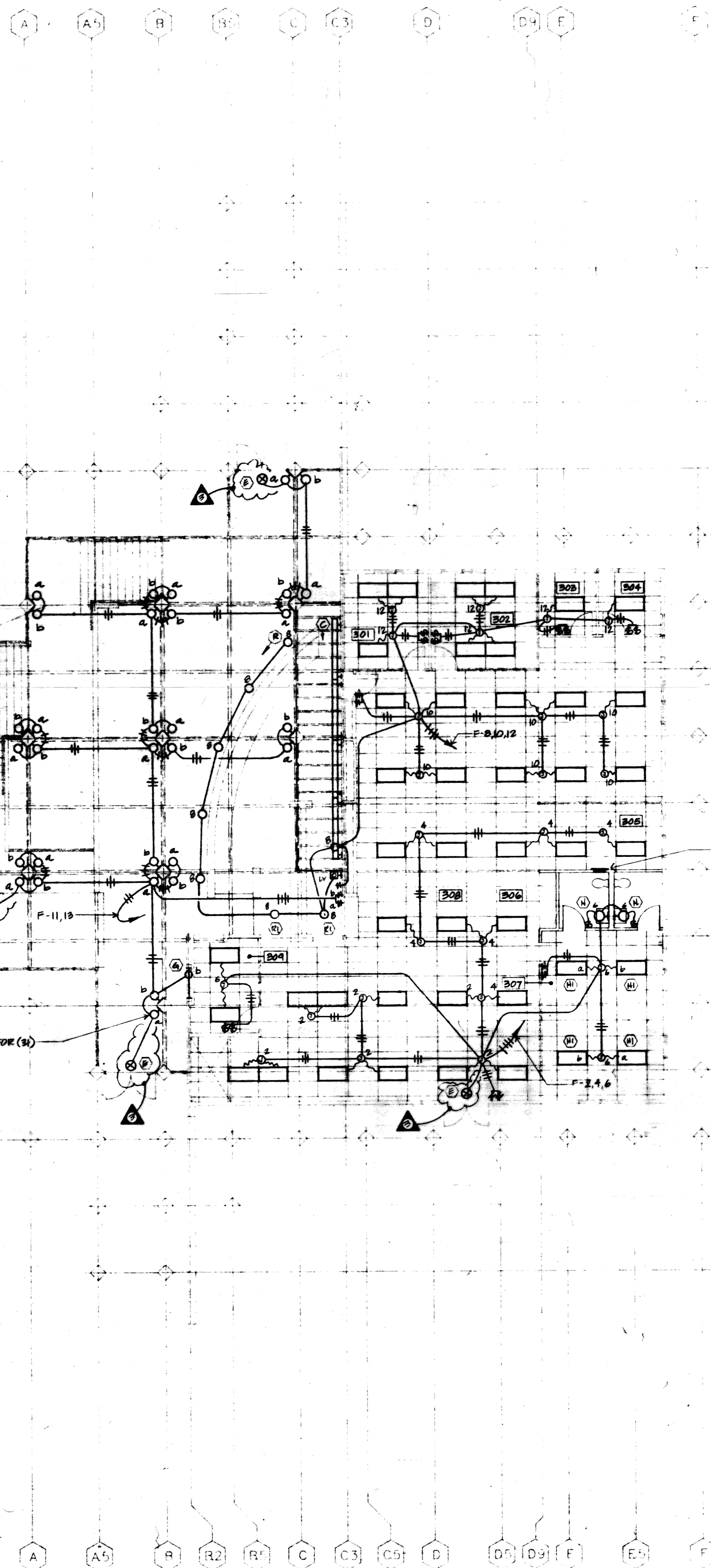


Civic Center Improvements
CITY OF CUPERTINO
 Cupertino, California

LIBRARY
 LIGHTING FLOOR PLAN -
 MAIN LEVEL

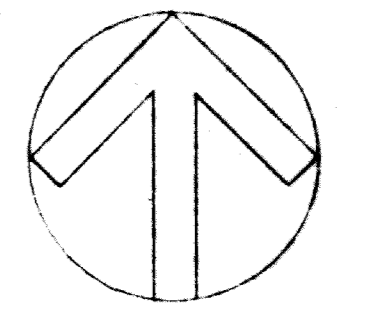
DRAWN
 P.T.
 CHECKED
 T.H./J.C.
 DATE
 OCT. 14, 1986
 SCALE
 AS NOTED
 JOB NO.
 86207
 SHEET

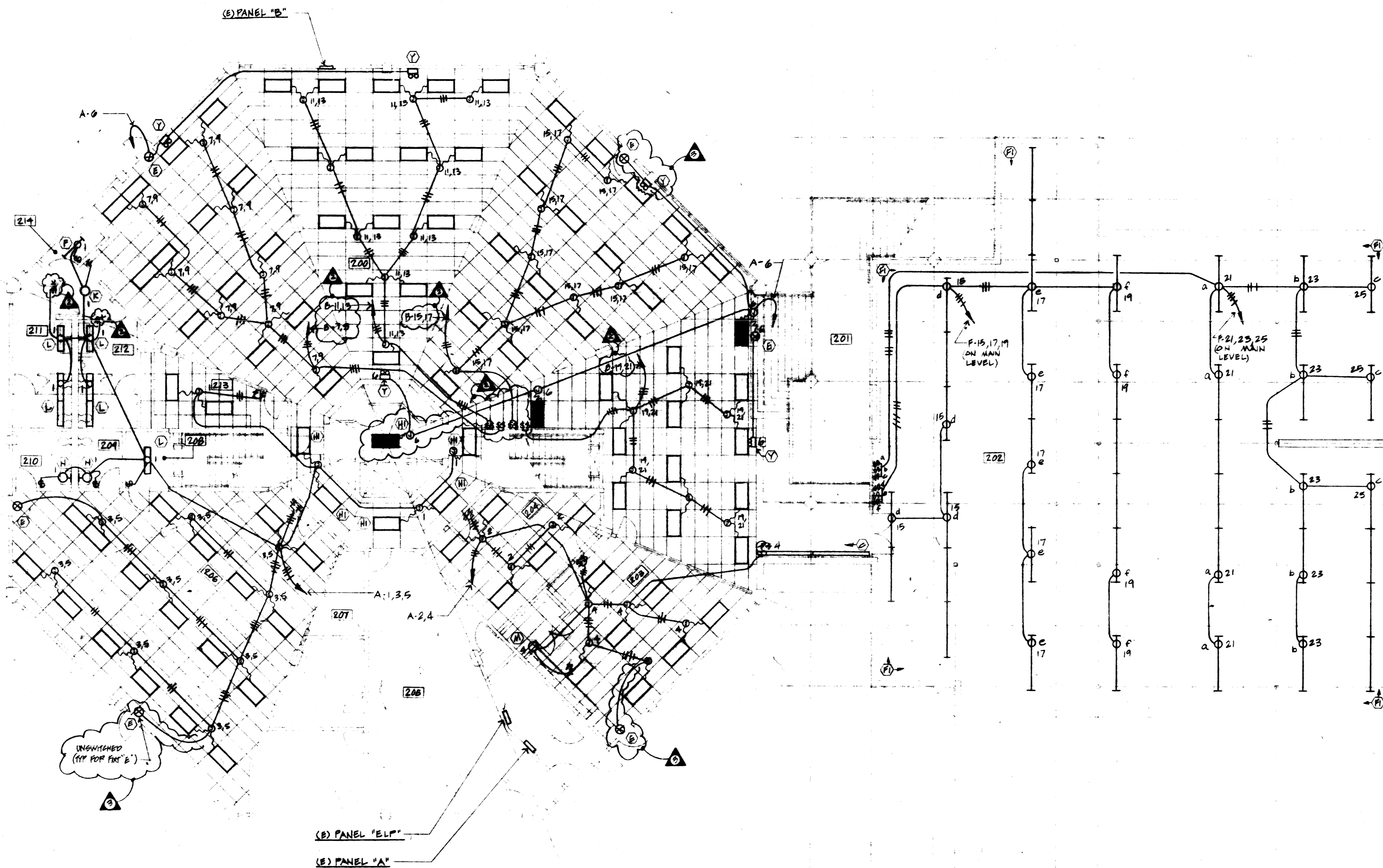
F-3.3
 OF SHEETS



Ⓢ LIGHTING FLOOR PLAN-MAIN LEVEL
 SCALE: 1/8" = 1'-0"

NOTE: ALL FIXTURES SHOWN ON THIS SHEET
 ARE TYPE "H" UNLESS NOTED OTHERWISE

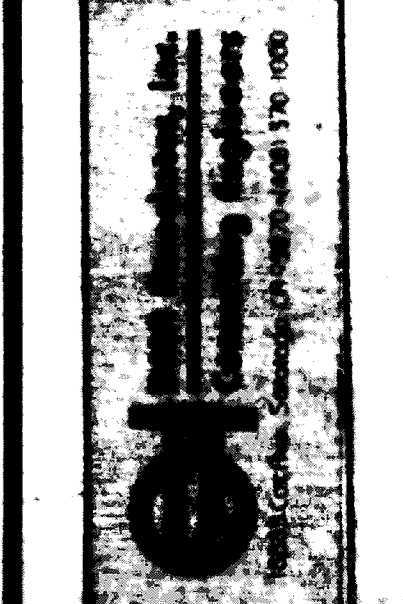
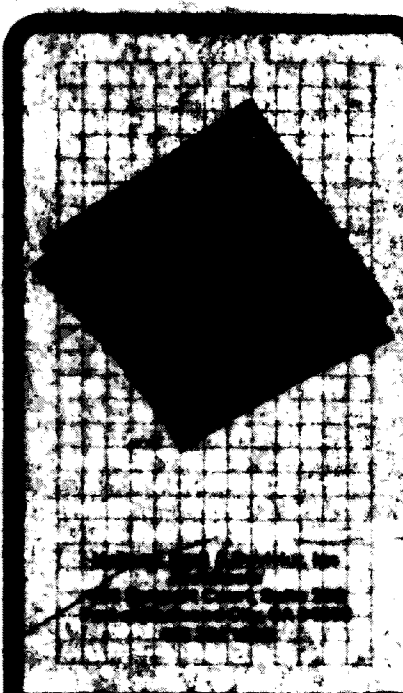




1 LIGHTING FLOOR PLAN - TERRACE LEVEL
 SCALE: 1/8" = 1'-0"

NOTE: ALL FIXTURES SHOWN ON THIS SHEET
 ARE TYPE "H" UNLESS NOTED OTHERWISE.

REVISIONS	BY
10-21-86	
11-18-86	
11-21-86	



Civic Center
CITY OF CUPERTINO
 Cupertino, California

LIBRARY
 LIGHTING FLOOR PLAN -
 TERRACE LEVEL

DRAWN	P.T.
CHECKED	T.H./J.C.
DATE	OCT. 24, 1986
SCALE	AS NOTED
JOB NO.	8-8-86
SHEET	

E-3.4
 OF SHEETS