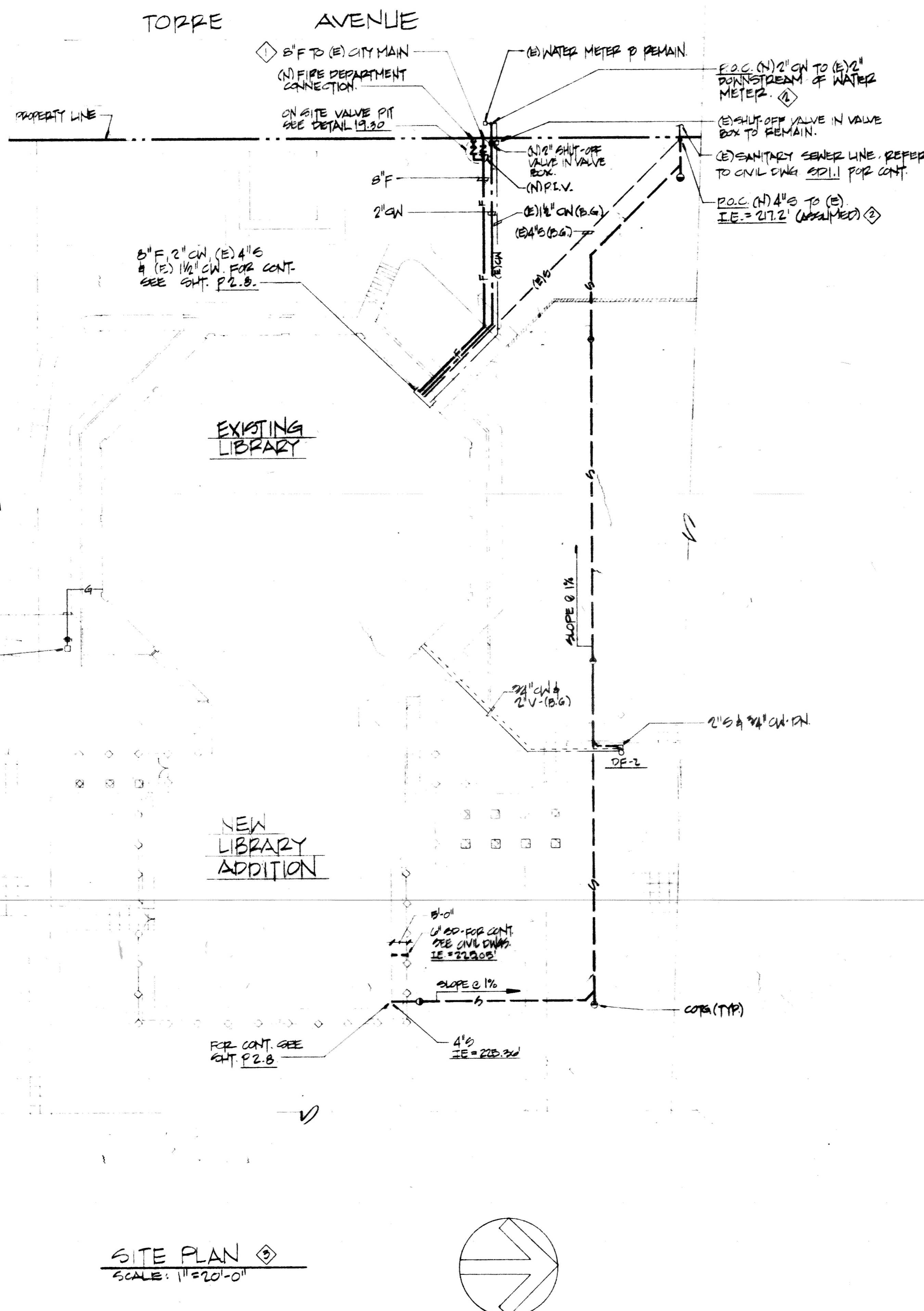


PLAN NOTES:

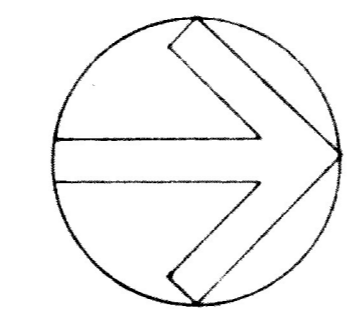
- ① 8" FIRE LINE FROM CITY MAIN TO PROPERTY LINE BY SAN JOSE WATER WORKS. STREET, CURB, GUTTER, SIDE WALK, ETC., MUST BE REPAIRED TO ORIGINAL CONDITION, AND TO CITY OF CUPERTINO SPECIFICATIONS.
- ② VERIFY SIZE & LOCATION OF (E) PIPING BEFORE STARTING ANY CUT-IN FOR (N) SERVICES, WHERE CONFLICTS OCCUR, NOTIFY THE MECHANICAL ENGINEER FOR RESOLUTION. DO NOT INSTALL ANY (N) WORK UNTIL THIS HAS OCCURRED.
- ③ ALL PIPING SHOWN IS NEW UNLESS OTHERWISE NOTED.



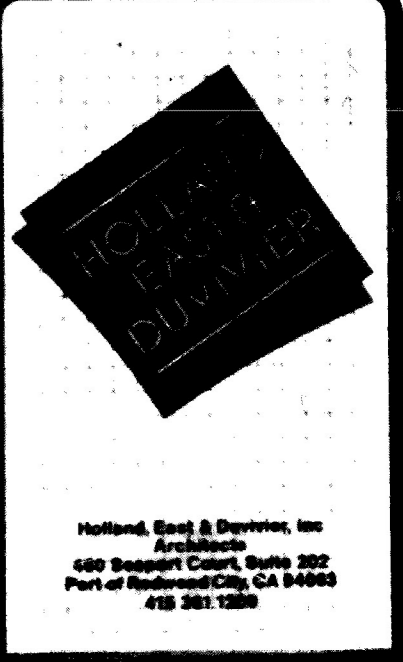
PLUMBING & FIRE PROTECTION LEGEND		
SYMBOL	ABBREV.	NOMENCLATURE
---	CW	COLD WATER (POTABLE)
---	HW	HOT WATER SUPPLY
---	HWR	HOT WATER RETURN
---	S OR W	SOIL OR WASTE PIPE ABOVE GRADE OR FLOOR
---	S OR W	SOIL OR WASTE PIPE BELOW GRADE OR FLOOR
---	RWL	RAIN WATER LEADER
---	SD	STORM DRAIN
---	OD	OVERFLOW DRAIN
---	V	VENT
---	P	TP TRAP PRIMER LINE
---	CD	CONDENSATE DRAIN
---	G	GAS
---	F	FIRE LINE
---	AS	AUTOMATIC SPRINKLER SYSTEM
○		PENDENT TYPE SPRINKLER HEAD
○		UPRIGHT TYPE SPRINKLER HEAD
○		SIDEWALL TYPE SPRINKLER HEAD
○	FD	FLOOR DRAIN
○	FS	FLOOR SINK
○	CO	CLEANOUT
○	FCO	FLOOR CLEANOUT
○	WCO	WALL CLEANOUT
○	COTG	CLEANOUT TO GRADE
○	HB	HOSE BIBB
---		UNION
---		SLOPE LINE DOWN IN DIRECTION OF ARROW
---	CK.V.	CHECK VALVE
---		PRESSURE RELIEF VALVE
---	G.C.	GAS COCK
A.D.		ACCESS DOOR
C.F.F.		CAP FOR FUTURE
VR		VENT RISER
VTR		VENT THRU ROOF
SS		SANITARY SEWER
(BG)		BELOW GRADE
(AG)		ABOVE GRADE
I.E.		INVERT ELEVATION
(F)		FUTURE
FF		FINISHED FLOOR
XXXXX		EXISTING TO BE REMOVED
P.O.C.		POINT OF CONNECTION

PLUMBING & FIRE PROTECT. DWG. INDEX	
SHEET NUMBER	TITLE
PLUMBING	
PF.0	PLUMBING & FIRE PROTECTION: PARTIAL SITE PLAN, LEGEND & DRAWING INDEX
P2.1	CITY HALL PLUMBING, FIRST FLOOR PLAN
P2.2	CITY HALL PLUMBING, TERRACE LEVEL PLAN
P2.7	LIBRARY PLUMBING, MAIN LEVEL PLAN
P2.8	LIBRARY PLUMBING, TERRACE LEVEL PLAN
P3.1	CITY HALL & LIBRARY PLBG. FIXTURE & EQUIPMENT SCHEDULES
P5.1	CITY HALL & LIBRARY PLBG. ENLARGED TOILET ROOMS
FIRE PROTECTION	
F1.2	CITY HALL FIRE PROTECTION, TERRACE LEVEL DEMOLITION PLAN
F2.1	CITY HALL FIRE PROTECTION, FIRST FLOOR PLAN
F2.2	CITY HALL FIRE PROTECTION, TERRACE LEVEL PLAN
F2.7	LIBRARY FIRE PROTECTION, MAIN LEVEL PLAN
F2.8	LIBRARY FIRE PROTECTION, TERRACE LEVEL PLAN
F2.9	LIBRARY FIRE PROTECTION, MEZZANINE LEVEL PLAN

SITE PLAN
SCALE: 1" = 20'-0"



REVISIONS	BY
△ 10-24-80	P.C.



Richard B. & Company, Inc.
Professional Engineers
448 Broadway, Suite 200
Palmdale, California 93550
Tel: (818) 251-1288

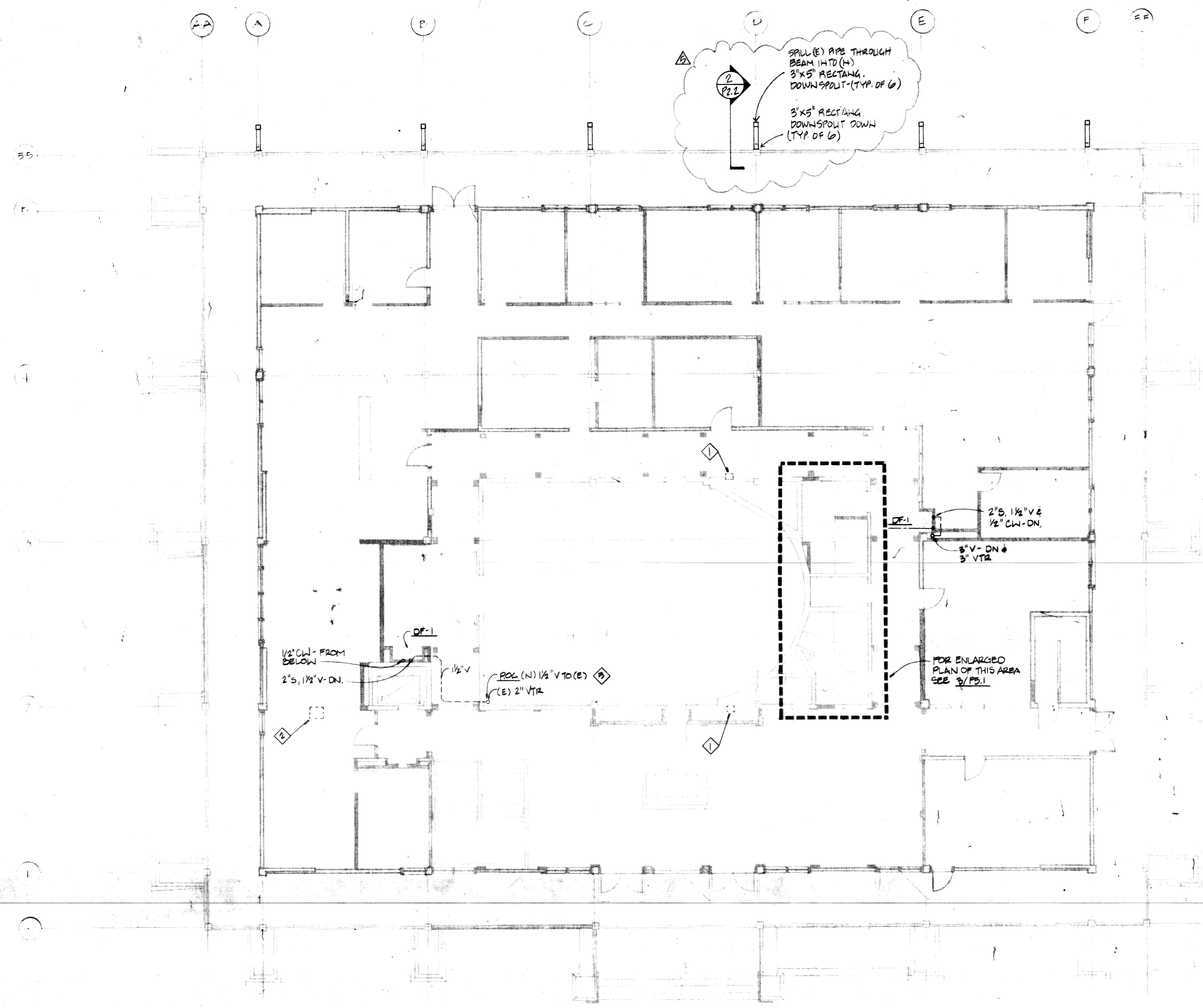


Civic Center Improvements
CITY OF CUPERTINO
Cupertino, California

PLUMBING & FIRE PROTECTION
PARTIAL SITE PLAN,
LEGEND & DRAWING INDEX

DRAWN
CHECKED
DATE
10-10-80
SCALE
AS SHOWN
JOB NO.
SHEET

PF.0



SPILL (E) PIPE THROUGH BEAM INTO (H) 3'x5' RECTANG. DOWNSPOUT (TYP. OF 6)

3'x5' RECTANG. DOWNSPOUT DOWN (TYP. OF 6)

1/2" CW - FROM BELOW 2" S, 1 1/2" V - DN.

1/2" V

POC (N) 1/2" V TO (E) (E) 2" VTR

2" S, 1 1/2" V & 1/2" CW - DN.

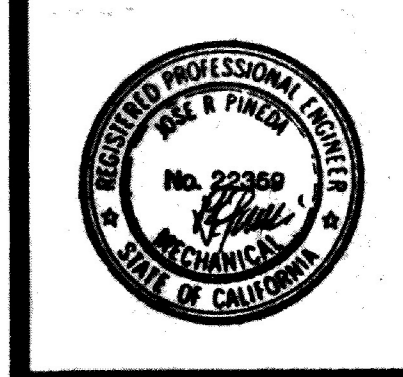
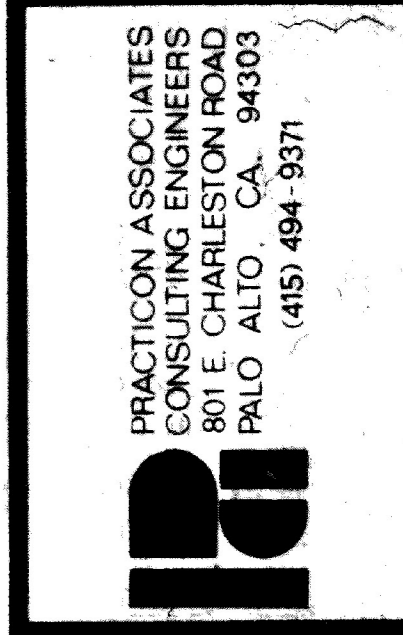
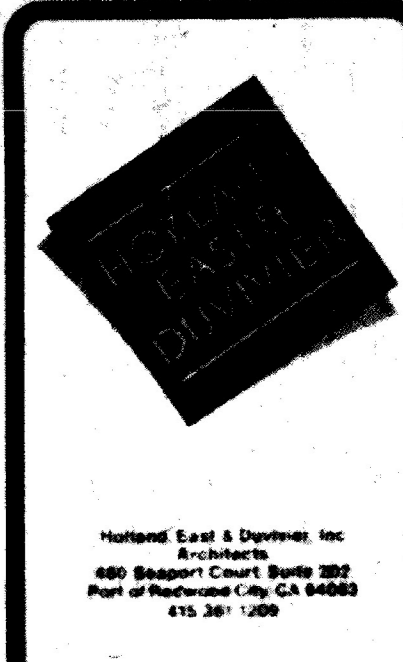
3" V - DN & 3" VTR

FOR ENLARGED PLAN OF THIS AREA SEE 3/P2.1

FIRST FLOOR PLAN ◆◆
SCALE: 1/8" = 1'-0"

- SHEET NOTES:**
- ◆ (E) ELECTRIC WATER COOLER TO BE REMOVED & TURN OVER TO THE OWNER. CAP (E) 2" S & (E) 1/2" CW IN TERRACE LEVEL. CAP (E) 1/2" V IN CLR. SPACE.
 - ◆ (E) SINK TO BE REMOVED & TURN OVER TO THE OWNER. CAP (E) 2" S (E) 1/2" CW & (E) 1/2" V IN TERRACE LEVEL. CAP (E) 1/2" V IN CLR. SPACE.
 - ◆ ALL (E) RIN. SYSTEM ON THIS LEVEL TO REMAIN UNDISTURBED. REFER TO 3/P2.3 FOR LOCATION OF (E) ROOF DRAIN.
 - ◆ ALL (E) LAWN PIPES & SUPPLY PIPING ON THIS LEVEL TO REMAIN UNDISTURBED.
 - ◆ P.O.C. VERIFY SIZE & LOCATION OF (E) PIPING BEFORE STARTING ANY CUT-IN FOR (N) SERVICES. WHERE CONFLICTS OCCUR, NOTIFY THE MECHANICAL ENGINEER FOR RESOLUTION. DO NOT INSTALL ANY (N) WRT UNTIL THIS HAS OCCURRED.

REVISIONS	BY
△ 10-24-86	P.C.
△ 11-18-86	P.C.
△ 12-18-86	



Civic Center Improvements
CITY OF CUPERTINO
Cupertino, California

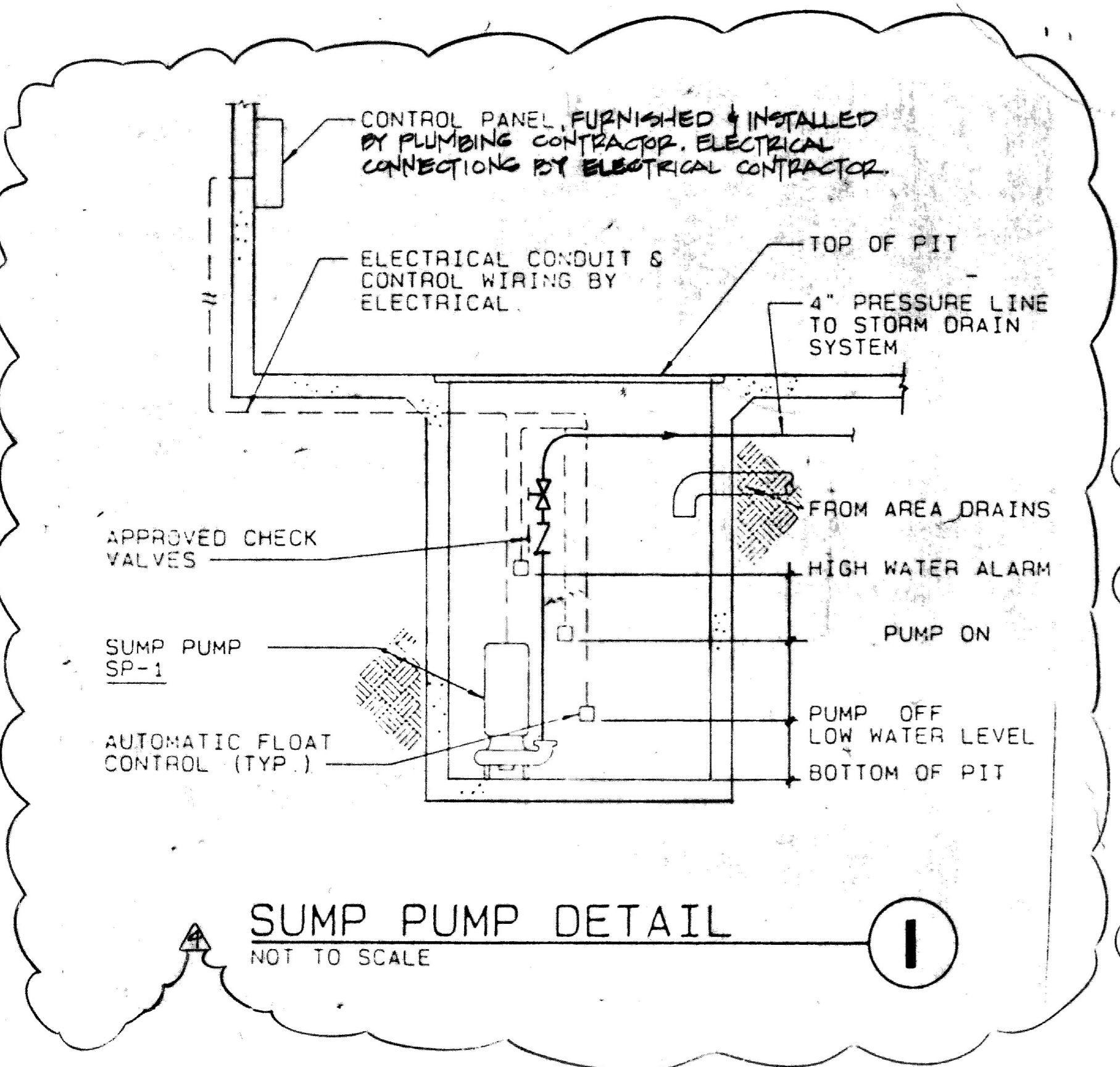
CITY HALL
PLUMBING
FIRST FLOOR PLAN

DRAWN
CHECKED
DAYS
SCALE
JOB NO.
SHEET
P2.1

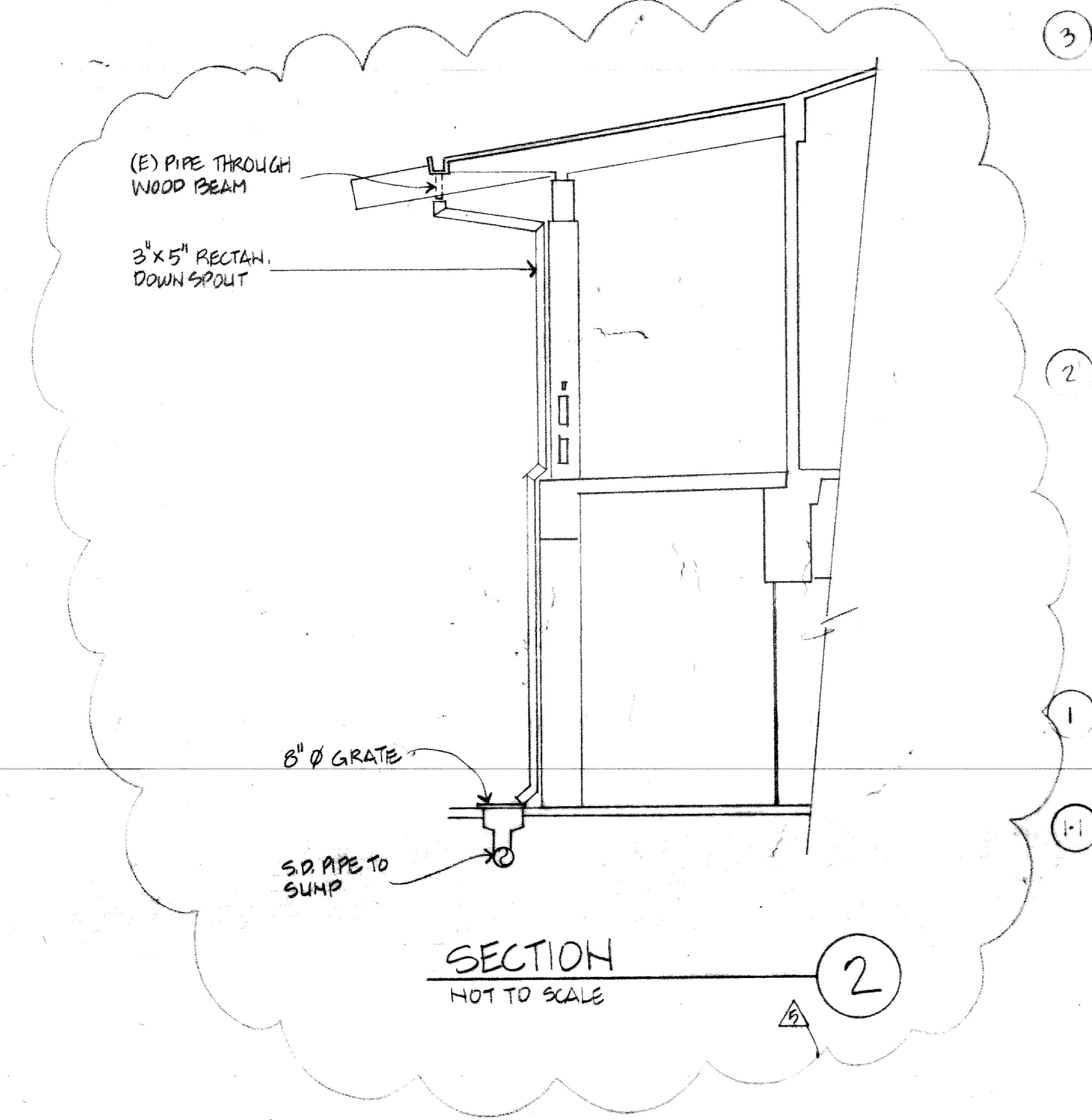
REVISIONS	BY
12-24-86	R.C.
11-18-86	R.C.
12-3-86	R.P.
12-18-86	

SHEET NOTES

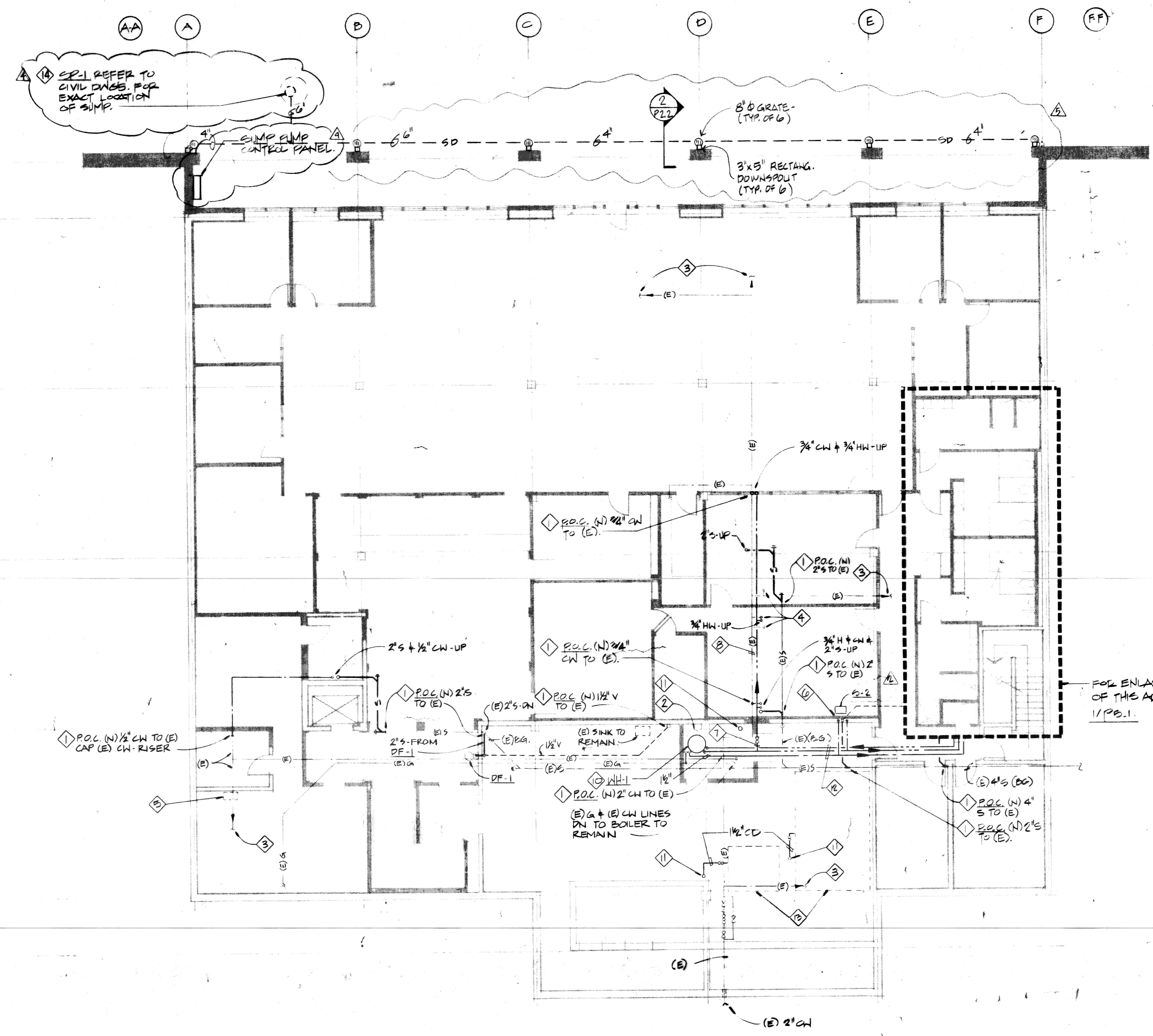
- 1. P.O.C. VERIFY SIZE & LOCATION OF (E) PIPING BEFORE STARTING ANY CUT-IN FOR (N) SERVICES WHERE CONFLICTS OCCUR. NOTIFY THE MECH. ENGINEER FOR RESOLUTION. DO NOT INSTALL ANY (N) WORK UNTIL THIS HAS OCCURRED.
- 2. REMOVE (E) WATER HEATER AND TURN OVER TO THE OWNER. REMOVE ALL RELATED (E) PIPING. (E) CIRCULATING PUMP TO BE INSTALLED IN (N) HW SYSTEM.
- 3. (E) 1" CN TO LAWN BOXES TO REMAIN.
- 4. (E) CN RISER TO (E) WATER CLOSETS & SERVICE SINK ABOVE TO REMAIN.
- 5. (E) SINK TO BE REMOVED & RELOCATED. SEE PLS. FIXTURE SCHEDULE. CAP (E) 2" IN WALL & CAP (E) CN. (E) HW & (E) V IN "C" SPACE.
- 6. 2" S, 1/2" V, 1/2" CN & 1/2" HW - CN.
- 7. REMOVE (E) HW LINE & (E) HW RISERS TO (E) LAVATORIES ABOVE. REPLACE (E) HW LINE WITH A (N) 2" HW AS SHOWN.
- 8. CAP (E) CN RISERS TO (E) LAVATORIES ABOVE.
- 9. ALL PIPING SHOWN IS NEW UNLESS OTHERWISE NOTED.
- 10. N.C. SEE DETAIL 1929. RELOCATE (E) 2" S & CONNECT TO (N) GAS TRAIN.
- 11. (E) FLOOR DRAIN TO REMAIN.
- 12. 1/2" HW, 1/2" HW & 2" CN.
- 13. (E) & (N) RUN 1/2" CD LINE TO SPILL INTO (E) PD AS SHOWN. REFER TO MECH. DWGS. FOR UNIT LOCATIONS.
- 14. S.E.C. 100 GPM @ 16 FT. TCH, 1/2 HP MOTOR (208V-2) S.A.C.O. MODEL 2570-21 TYPE NEC HEAVY DUTY SUBMERSIBLE NON-CLOG STORM EJECTOR. U.L. LISTED EXPLOSION PROOF MOTOR SUPPLIED WITH A NEMA 4-CENTRAL PANEL COMPLETE WITH BULB-TYPE ON/OFF SWITCH AND HIGH WATER OPERATING LEVEL SENSORS. CENTRAL PANEL SHALL INCLUDE: MAGNETIC STARTER W/2-LEG OVERLOAD PROTECTION, H.O.A. SWITCH, FUSED CONTROL CIRCUIT WITH DOOR INTERLOCK SWITCH, CONTROL POWER TRANSFORMER, RUNNING LIGHT, LOCKABLE DOOR, HIGH WATER ALARM.



SUMP PUMP DETAIL
NOT TO SCALE

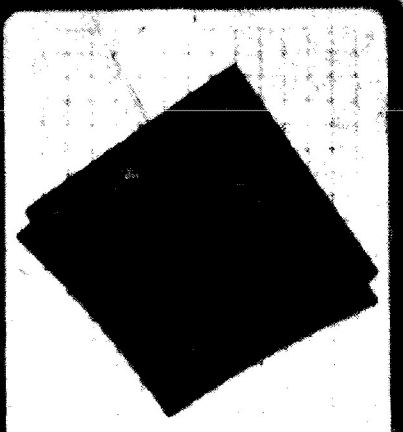


SECTION
NOT TO SCALE



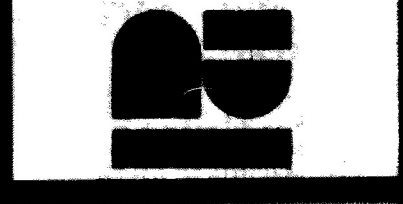
TERRACE LEVEL PLAN
SCALE: 1/8" = 1'-0"

FOR ENLARGED PLAN OF THE AREA SEE 1/PS.1



Practitioners License No. 10000

PRACTICON ASSOCIATES
CONSULTING ENGINEERS
801 E. CHARLESTON ROAD
PALO ALTO, CA. 94303
(415) 484-5371



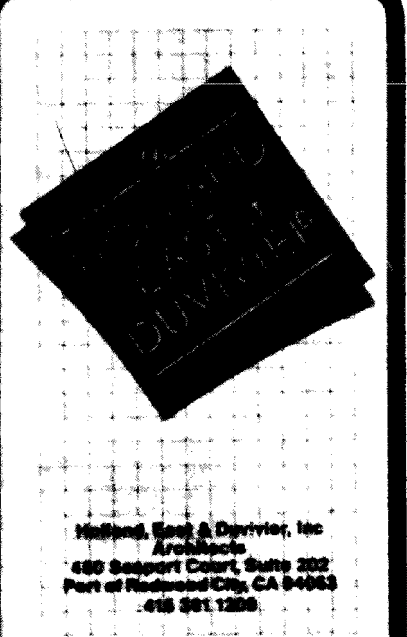
Civic Center Improvements
CITY OF CUPERTINO
Cupertino, California

CITY HALL
PLUMBING
TERRACE LEVEL PLAN

DRAWN
CHS/KED
DATE
SCALE
JOB NO.
SHEET

P2.2

REVISIONS	BY
Δ 10-24-86	RL
Δ 11-15-80	R.C.



PRACTICON ASSOCIATES
CONSULTING ENGINEERS
1000 AVENUE 84
PAULO ALTO
CALIFORNIA 95051
(415) 494-9377



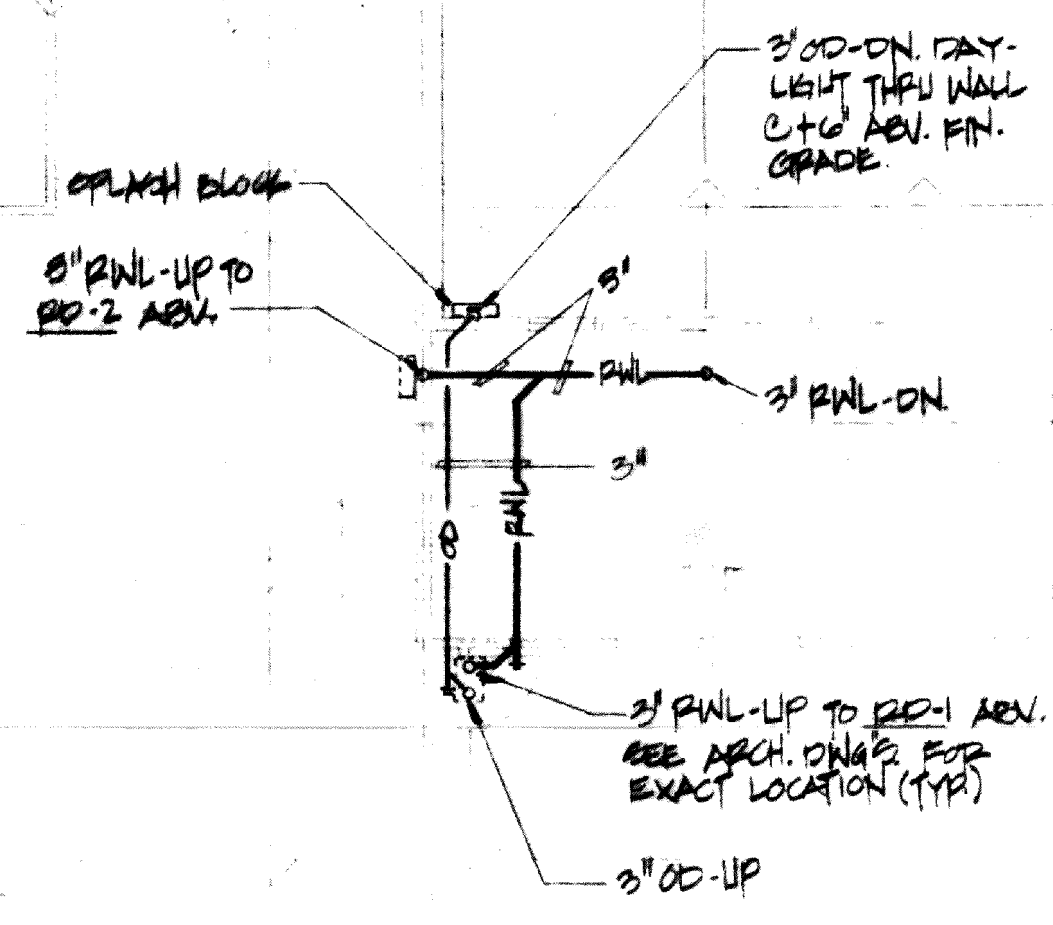
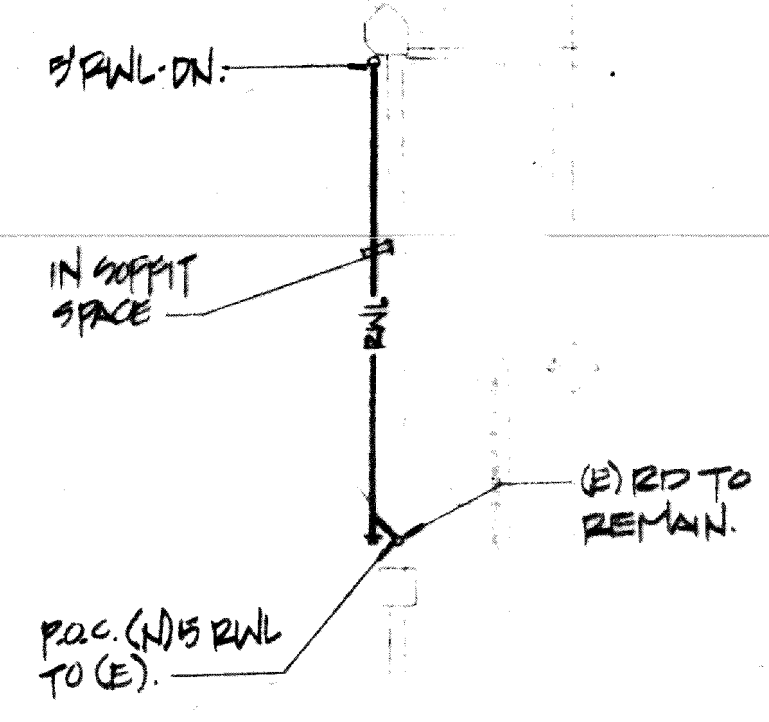
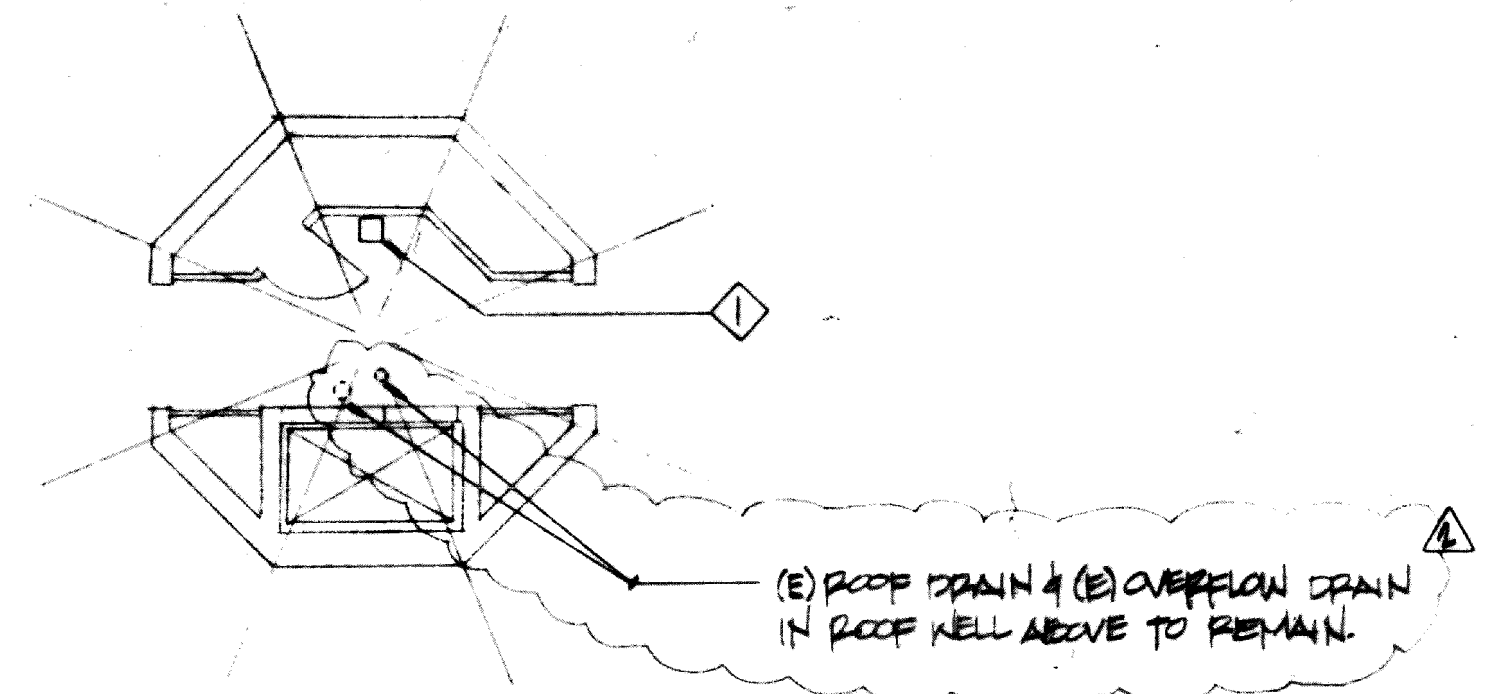
Civic Center Improvements
CITY OF CUPERTINO
Cupertino, California

LIBRARY
PLUMBING
MAIN LEVEL PLAN

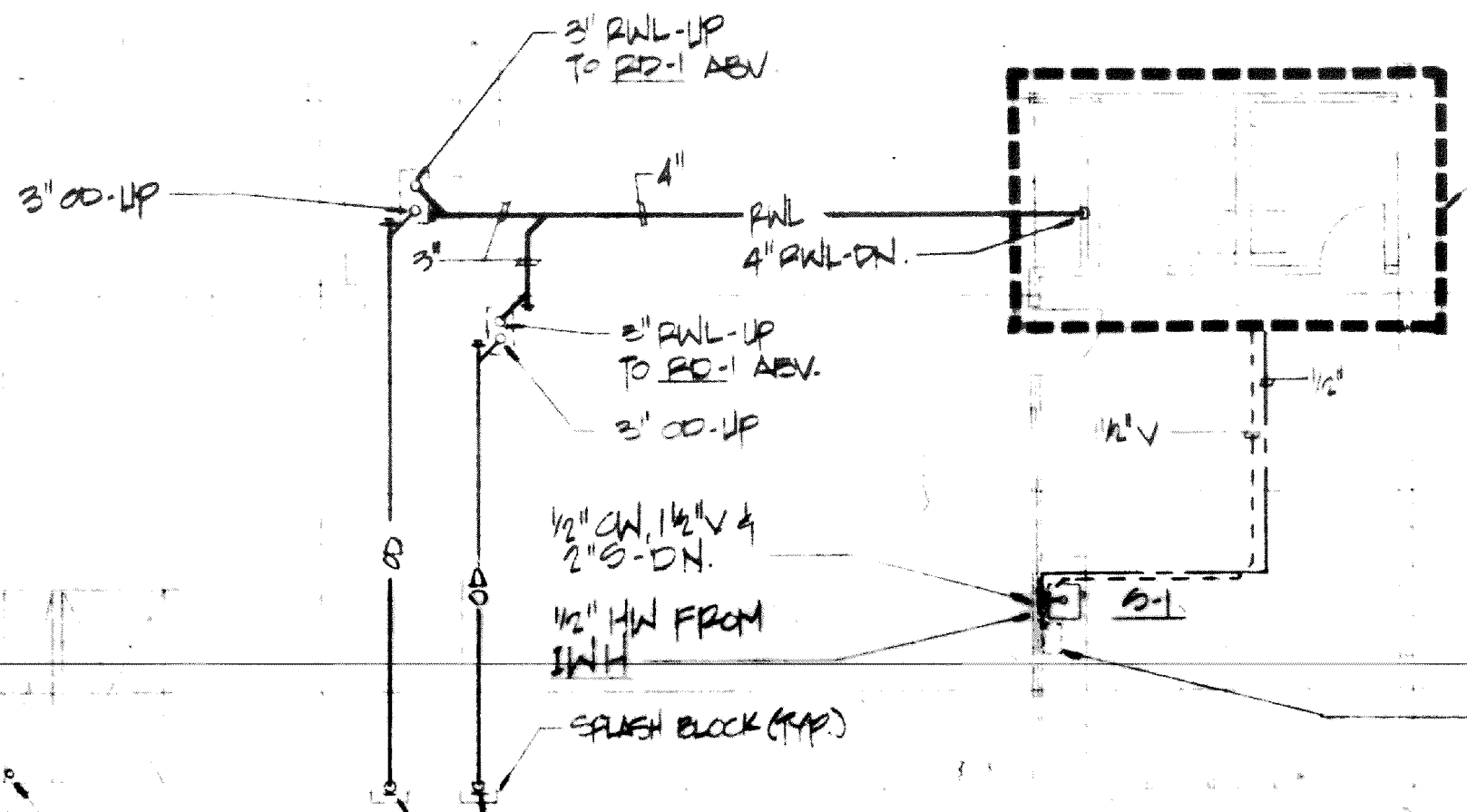
DRAWN
CHECKED
DATE 10-12-86
SCALE 1/8" = 1'-0"
JOB NO.
SHEET
P2.7
OF SHEETS

SHEET NOTES:
 (E) IS TO BE REMOVED & TURN OVER TO THE OWNER. REPLACE WITH (N) RE-1. CONNECT 2"Ø, 1/2"V & 1/2"ØW TO (E) PIPING IN WALL. VERIFY SIZE & LOCATION OF (E) PIPING BEFORE STARTING ANY CUT-IN FOR (N) SERVICES.

MEZZANINE LEVEL PARTIAL PLAN
SCALE: 1/8"=1'-0"



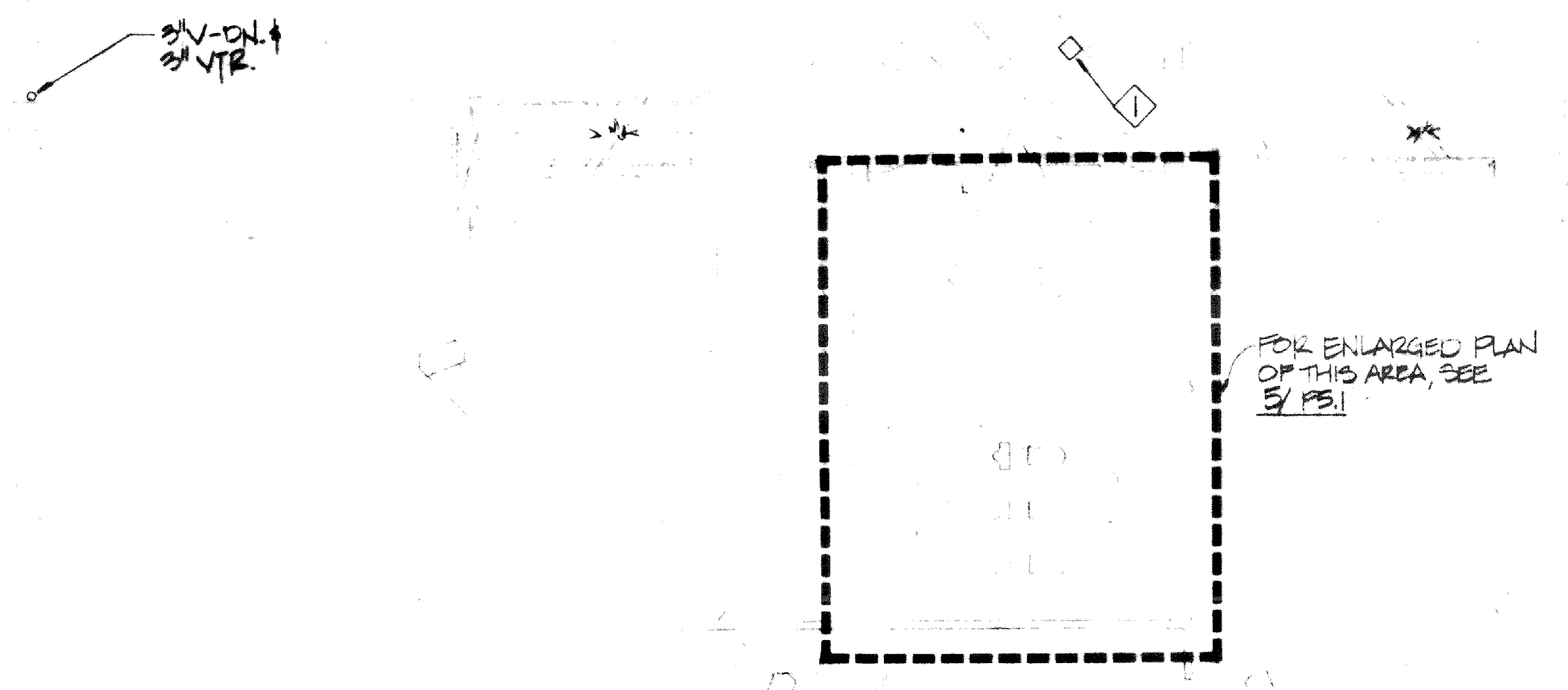
FINISHED FLOOR ELEVATION: 227.90'



3"Ø-DN DAYLIGHT THRU WALL AT +0' ADV. FIN. GRADE.

1"Ø UP TO (HV) ON ROOF SEE MECH DWG'S FOR EXACT LOCATION (100 C.F.M.)

MAIN LEVEL PLAN
SCALE: 1/8"=1'-0"

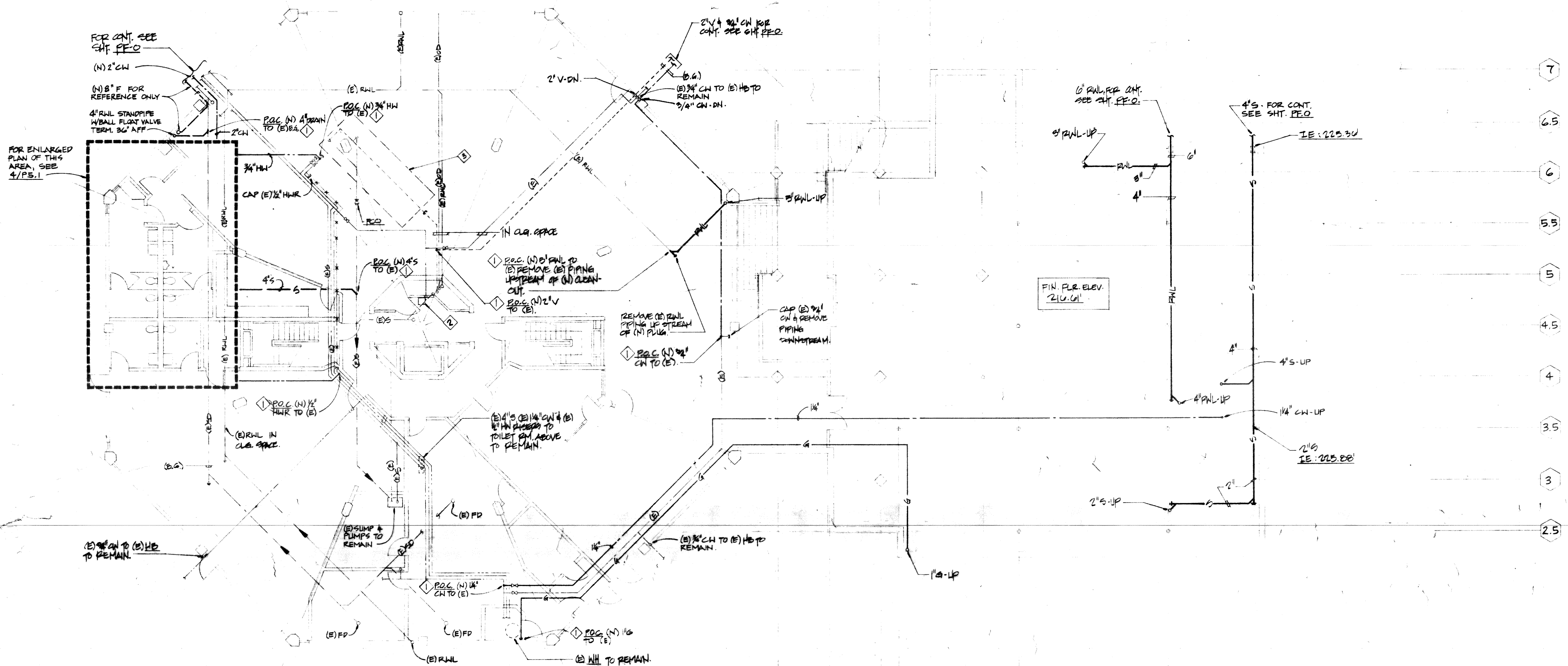


REVISIONS	BY
10-24-86	KL

SHEET NOTES:

- 1. P.O.C. VERIFY SIZE & LOCATION OF (E) PIPING BEFORE STARTING ANY CUT-IN FOR (N) SERVICES. WHERE CONFLICTS OCCUR, NOTIFY THE MECHANICAL ENGINEER FOR RESOLUTION DO NOT INSTALL ANY (N) WORK UNTIL THIS HAS OCCURRED.
- 2. (E) DE TO BE REMOVED AND TURN OVER TO OWNER. REPLACE WITH (N) DE-1. CONNECT 2"Ø, 1/2"Ø & 1/2"Ø TO (E) PIPING IN WALL.
- 3. REMOVE (E) SERVICE SINK, (E) SINK & ALL PLUMBING FIXTURES IN (E) TOILET RMS. IN THIS AREA. CAP (E) DRAIN, WATER & VENT LINES AS SHOWN.
- 4. ALL (E) R/W & (E) CO SYSTEMS TO REMAIN & UNDISTURBED.
- 5. ALL PIPING SHOWN IS NEW UNLESS OTHERWISE NOTED.

A AS B BS C C3 D9



TERRACE LEVEL PLAN 4 5
SCALE: 1/8" = 1'-0"



Praxion Associates
Consulting Engineers
801 E. Charleston Road
Palo Alto, CA 94303
(415) 994-9371

Praxion Associates
Consulting Engineers
801 E. Charleston Road
Palo Alto, CA 94303
(415) 994-9371



Civic Center Improvements
CITY OF CUPERTINO
Cupertino, California

LIBRARY
PLUMBING
TERRACE LEVEL PLAN

DRAWN
CHECKED
DATE 10-10-86
SCALE 1/8" = 1'-0"
JOB NO.
SHEET
P2.8
OF SHEETS

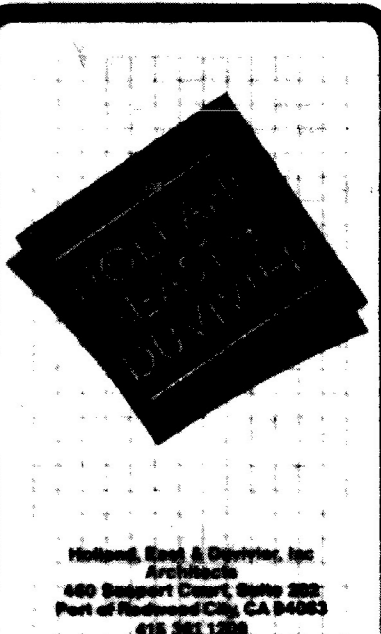
PLUMBING EQUIPMENT SCHEDULE

MARK	DESCRIPTION	ELECTRICAL			REMARKS
		HP	V	PH	
WH-1	WATER HEATER (CITY HALL)	—	—	—	A.O. SMITH MODEL NO BT-100 NATURAL GAS, 100 GAL. CAPACITY, 72 GPH RECOVERY AT 100°F RISE, FULLY AUTO. CONTROL W/SAFETY SHUT-OFF, COMPLETE W/TEMP. PRESS. RELIEF VALVE, 80,000 BTU/H INPUT, 150 PSI MAX. WORKING PRESSURE.
IHW-1	INSTANTANEOUS WATER HEATER (LIBRARY ADDITION)	—	208	1	PVI INDUSTRIES POINT-OF-USE ELECTRIC WATER HEATER 9 KW. WITH ADJUSTABLE FLOW RESTRICTOR ON UNIT.
CP-1	CIRCULATION PUMP (EXISTING) (CITY HALL)	1/2	120	1	EXISTING BELL & GOSSETT NO. 75 PUMP TO BE INCORPORATED INTO NEW HOT WATER SYSTEM.
IHW-2	INSTANTANEOUS WATER HEATER (LIBRARY ADDITION)	—	208	1	SAME AS IHW-1, EXCEPT WITH 6 KW.

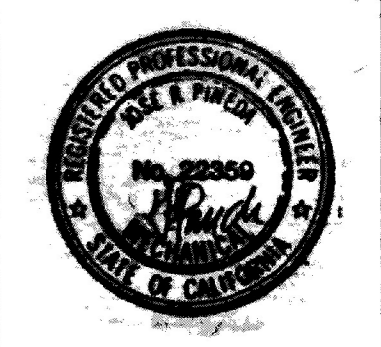
PLUMBING FIXTURE CONNECTION SCHEDULE

MARK	DESCRIPTION	MIN. BRANCH SIZE				REMARKS
		W	V	CW	HW	
WC-1	WATER CLOSET	4"	2"	1 1/4"	—	AMERICAN STANDARD "AFWALL" 2477.016; SLOAN ROYAL 110-3 FLUSH VALVE (TOP SPUD); CHURCH 9400 KC WHITE SEAT.
WC-2	WATER CLOSET (HANDICAP)	4"	2"	1 1/4"	—	SAME AS WC-1 EXCEPT MOUNT FOR HANDICAP USAGE (SEE ARCHITECTURAL DRAWINGS FOR MOUNTING HEIGHT)
U-1	URINAL	2"	1 1/2"	1 1/4"	—	AMERICAN STANDARD "ALLBROOK" #6540.017; TOP SPUD; WALL HUNG; SLOAN ROYAL 180 YB FLUSH VALVE; J. R. SMITH FIG. 644 CARRIER W/BEARING PLATE. (SEE ARCHITECTURAL PLANS FOR HANDICAP MOUNTING REQUIREMENTS)
L-1	LAVATORY (COUNTERTOP)	2"	1 1/2"	1 1/2"	1/2"	AMERICAN STANDARD "VAL HORIZON" 3302.013 COUNTERTOP; SYMMONS E-90-FR-1 PS FAUCET WITHOUT POP-UP DRAIN; INTEGRAL PERFORATED GRID DRAIN; 1/2" C.P. LOOSE KEY STOP AND P-TRAP.
L-2	LAVATORY (HANDICAP)	2"	1 1/2"	1 1/2"	1/2"	SAME AS L-1 EXCEPT P-TRAP LOCATED IN WALL BEHIND 16" X 12" ACCESS DOOR; HOT & COLD WATER SUPPLY LINES WITH STOPS TO BE INSTALLED IN SUCH A MANNER AS NOT TO IMPEDE USAGE BY HANDICAPPED PERSONS. NO 7723.018 OFFSET GRID DRAIN.
S-1	SINK	2"	1 1/2"	1 1/2"	1/2"	EUKAY LR-1922 SINGLE COMPARTMENT, 19 GA. TYPE 302; SELF-PRM. 3 HOLES. W/ EUKAY LK-230 FAUCET, 4" O.P., LK-230 STRAINER, CP TAILPIECE, P-TRAP & DRAIN TO WALL; 1/2" C.P. LOOSE KEY STOP.
SSK-1	SERVICE SINK	3"	2"	3/4"	3/4"	FIAT MODEL MSB 2424; 24" X 24" X 10" HIGH MOLDED STONE RECEPTOR; #830-AA FAUCET WITH VACUUM BREAKER & INTEGRAL STOPS; #E-77-AA VINYL BUMPER GUARD; #889-CC MOP HANGER; PROVIDE 3" P-TRAP.
SH-1	SHOWER	—	—	1/2"	1/2"	SYMMONS MODEL NO E-90-1 TEMPTROL. PRESSURE BALANCING VALVE W/ INTEGRAL VOLUME CONTROL AND MAX. TEMPERATURE UNIT STOP. SHOWER HEAD AND NU-ARM BRACKET.
FD-1	FLOOR DRAIN	SEE DWGS	2"	—	—	J. R. SMITH FIG. 2010-A-B-U; CAST IRON BODY & FLASHING COLLAR; SEDIMENT BUCKET; ROUND TOP & VANDAL PROOF GRATE; 6" DIA. POLISHED BRONZE STRAINER.
FD-2	FLOOR DRAIN	SEE DWGS	2"	*	—	J. R. SMITH FIG. 2010-A-P-U; CAST IRON BODY & FLASHING COLLAR; *TRAP PRIMER CONNECTION; VANDAL PROOF GRATE; 5" DIA. POLISHED BRONZE STRAINER.
FS-1	FLOOR SINK	SEE DWGS	2"	—	—	J. R. SMITH FIG. 3101-10; CAST IRON; 8" SQ. OPEN TOP RECEPTOR WITH ACID RESISTANT COATED INTERIOR.
HB-1	HOSE BIBB	—	—	3/4"	—	ACORN MODEL 8121; LOCKSHIELD BONNET & REMOVABLE LOOSE KEY HANDLE; INTEGRAL VACUUM BREAKER; LOOSE KEY STOP; POLISHED CHROME FINISH
TP-1	TRAP PRIMER	—	—	1/2"	—	E & S TRAP PRIMER
DF-1	DRINKING FOUNTAIN	2"	1 1/2"	1/2"	—	HAWS MODEL 1110-RF; SELF CLOSING VALVE; FRONT PUSH BUTTON; 1/2" IPS SCREWDRIIVER STOP; COLOR FINISH AS SELECTED BY ARCHITECT.
RD-1	ROOF DRAIN	*	—	—	—	J. R. SMITH FIG. NO 330-EGC; CAST IRON DOME; EXTENSION; DOME RECEIVER; UNDERDECK CLAMP. * STORM DRAINAGE SYSTEM
L-3	LAVATORY	2"	1 1/2"	1 1/2"	1/2"	AMERICAN STANDARD "LUCERNE" NO 0555-012 4" ON CENTERS W/CONCEALED ARMS, 20" X 18" VITREOUS CHINA, AMERICAN STANDARD "HERITAGE CENTERSET" NO 2103.620 FAUCET W/FRON REST STOP, INTEGRAL PERFORATED GRID DRAIN; 1/2" C.P. LOOSE KEY STOP, P-TRAP
L-4	LAVATORY (HANDICAPPED)	2"	1 1/2"	1 1/2"	1/2"	SAME AS L-3 EXCEPT USE AMERICAN STANDARD "HERITAGE CENTERSET" NO 2103.620 FAUCET; AMERICAN STANDARD NO 7122.018 OFFSET GRID DRAIN; P-TRAP LOCATED IN WALL BEHIND 16" X 12" ACCESS DOOR; HANG ON SUPPLY LINE W/STOPS TO BE INSTALLED IN SUCH A MANNER AS NOT TO IMPEDE USAGE BY HANDICAPPED PERSONS. J. R. SMITH FIG. NO 1550 CAST IRON BODY, FLASHING CLAMP
RD-2	ROOF DRAIN	*	—	—	—	* STORM DRAINAGE SYSTEM
DF-2	DRINKING FOUNTAIN	2"	1 1/2"	1/2"	1/2"	HAWS MODEL 2310 FEDERATA TYPE, FLUSH BAR OPERATED VALVE W/STREAM REGULATOR, 1/2" IPS SCREWDRIIVER STOP, VANDAL RESISTANT BUBBLER, FINISH 2" P-TRAP BELOW GRATE.
SH-2	SHOWER (HANDICAPPED)	—	—	1/2"	1/2"	SYMMONS MODEL NO E-90-300 TEMPTROL. PRESSURE BALANCING VALVE W/ INTEGRAL VOLUME CONTROL AND MAX. TEMPERATURE UNIT STOP. WALL AND HAND SHOWER W/3/8" FLEXIBLE HOSE, WALL CONN. - W/RANGE TWO WALL HOLES.
FCO	FLOOR CLEANOUT	SEE DWGS FOR SIZE	—	—	—	J. R. SMITH FIG. NO 4025-F DUCO CAST IRON W/ROUND ADJ. SCORATED SELF-PR. W.B.-TRP, INSIDE CALKED OUTLET, LEAD SEAL IRON PLUG, FLASHING FLANGE
WCO	WALL CLEANOUT	SEE DWGS FOR SIZE	—	—	—	J. R. SMITH FIG. NO 4510 W/GASKET SEAL & IRON PLUG, LEAD COVER & SCREEN; J. R. SMITH FIG. NO 4510 STAINLESS STEEL HOLLOW COVER.
S-2	SINK (N.I.C.)	2"	1 1/2"	1 1/2"	1/2"	EXISTING RELOCATED DOUBLE S.S. SINK ROUGH IN AND FINAL CONNECT.

REVISIONS	BY
Δ 10-24-80	R.C.
Δ 11-10-80	R.C.



PRACTITION ASSOCIATES
 CONSULTING ENGINEERS
 801 E. CHARLESTON ROAD
 PALO ALTO, CA. 94303
 (415) 984-9871



Civic Center Improvements
CITY OF CUPERTINO
 Cupertino, California

CITY HALL & LIBRARY FLAG
 FIXTURE & EQUIPMENT
 SCHEDULES

DRAWN
CHECKED
DATE
SCALE
NOTE
JOB NO.
SHEET
P3.1
OF SHEETS

