

MECHANICAL LEGEND		
SYMBOL	ABBREV.	NOMENCLATURE
A.F.F.		ABOVE FINISHED FLOOR
W.T.A.T.		WATER TIGHT, AIR TIGHT
G.I.S.M.		GALVANIZED IRON, SHEET METAL
N.I.M.C.		NOT IN MECHANICAL CONTRACT
CFM		CUBIC FEET OF AIR PER MINUTE
A.E.		AIR EXTRACTOR W/ACCESSIBLE OPENER
N.O., N.C., C.		NORMALLY OPEN, NORMALLY CLOSED, COMMON
M.S.		MOTOR STARTER
F.S.W.		FLOW SWITCH
V.I.		VIBRATION ISOLATOR
F.C.P.		FLEXIBLE COUPLING
T.O.P.		TOP OF PLENUM

DRAWING INDEX	
SHEET NUMBER	TITLE
M0	MECHANICAL LEGENDS & DRAWING INDEX
M0.1	SCHEDULES
M1.1	CITY HALL MECHANICAL FIRST FLOOR DEMOLITION PLAN
M1.2	CITY HALL MECHANICAL TERRACE LEVEL DEMOLITION PLAN
M2.1	CITY HALL MECHANICAL FIRST FLOOR PLAN
M2.2	CITY HALL MECHANICAL TERRACE LEVEL PLAN
M2.3	CITY HALL MECHANICAL PARTIAL FLOOR PLANS & SECTIONS
M2.4	LIBRARY MECHANICAL MAIN LEVEL PLAN
M2.5	LIBRARY MECHANICAL TERRACE LEVEL PLAN
M2.6	MECHANICAL ROOF PLAN & SECTIONS
M3.1	CITY HALL SECTIONS
M4.1	CITY HALL PIPING DIAGRAMS
M5.1	CONTROL DIAGRAMS
M5.2	CONTROL DIAGRAMS

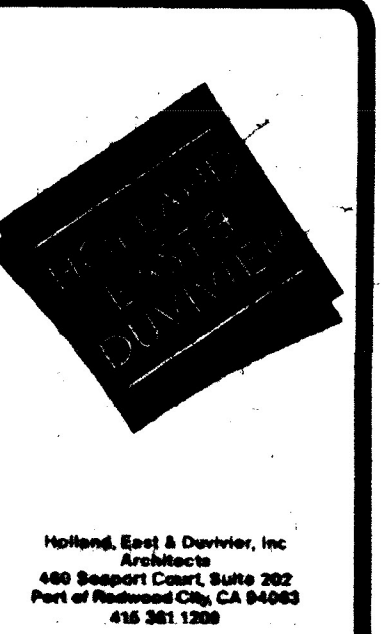
ENERGY CONSERVATION STANDARDS
 SECTIONS T20-1451 THROUGH T20-1542
 OF TITLE 24 OF THE CALIFORNIA
 ADMINISTRATIVE CODE HAVE BEEN
 REVIEWED AND THE DESIGN SUBMITTED
 CONFORMS SUBSTANTIALLY WITH
 DIVISIONS 11.2 OF THESE REGULATIONS
 SIGNATURE: *[Signature]*
 P.E. # 122339 DATE: 10-10-84

MECHANICAL LEGEND		
SYMBOL	ABBREV.	NOMENCLATURE
—HWS—	HWS	HOT WATER SUPPLY
—HWR—	HWR	HOT WATER RETURN
—CHS—	CHS	CHILLED WATER SUPPLY
—CHR—	CHR	CHILLED WATER RETURN
—CS—	CS	CONDENSER WATER SUPPLY
—CR—	CR	CONDENSER WATER RETURN
—CD—	CD	CONDENSATE DRAIN
—D—	D	DRAIN
—CW—	CW	COLD WATER
		UNION
		SLOPE LINE DOWN IN DIRECTION OF ARROW
		ECCENTRIC REDUCER
	STR.	STRAINER
	CK.V.	CHECK VALVE
	B.V.	BALANCE VALVE
		PIPE ANCHOR
	PRV	PRESSURE REDUCING VALVE
		PRESSURE RELIEF VALVE
	TCV	TEMPERATURE CONTROL VALVE
	H.V.	HAND VALVE (BUTTERFLY)
	GL.V.	GLOBE VALVE
	D.V.	DIAPHRAGM VALVE
	ESV	EMERGENCY SHUTOFF VALVE
	G.V.	GATE VALVE
	B.V.	BALL VALVE
	P.V.	PLUG VALVE
	N.V.	NEEDLE VALVE
	G.C.	GAS COCK
	FCV	FLOW CONTROL VALVE (B & G. CIRCUIT SETTER)
	T.W.	THERMOMETER WELL
	PRT	PRESSURE TAP, PETE'S PLUG
	MAV	MANUAL AIR VENT
		PRESSURE GAUGE W/SHUT OFF COCK
	B.O.P.	BOTTOM OF PIPE
	A.A.V.	AUTOMATIC AIR VENT
	B.F.	BLIND FLANGE
	P.T.	PLUGGED TEE
		THERMOMETER
		THERMOSTAT
		TEMPERATURE SENSOR
		HUMIDITY SENSOR
	EA, OA, RA, SA (D) (L)	EXHAUST, OUTSIDE, RETURN, SUPPLY AIR DAMPER, LOUVER
	S.D.	SPLITTER DAMPER W/LOCKING QUADRANT & ACCESS DOOR OR YOUNG REGULATOR ON CEILING OR WALL
	T	DUCT THROAT
	F.C.	FLEXIBLE CONNECTION
	A.D.	ACCESS DOOR
		FIRE DAMPER
	MAD, BD	MANUAL AIR DAMPER, BALANCE DAMPER
	A.A.D.	AUTOMATIC AIR DAMPER
		RETURN OR OUTSIDE AIR DUCT
		EXHAUST AIR DUCT
		SUPPLY AIR DUCT
	12x8	DUCT, WIDTH X HEIGHT
		DUCT, RISE OR DROP IN DIRECTION OF AIR FLOW
	A.L.	ACOUSTIC LINED DUCT, DIMENSIONS ARE OUTSIDE
	H.O.A.	HAND-OFF-AUTOMATIC SWITCH
	T.V., ATV	TURNING VANE, ACOUSTIC TURNING VANE
	B.O.D.	BOTTOM OF DUCT
	C.F.F.	CAP FOR FUTURE
	(E)	EXISTING
	(N)	NEW
	(F)	FUTURE
	XXXX	EXISTING TO BE REMOVED

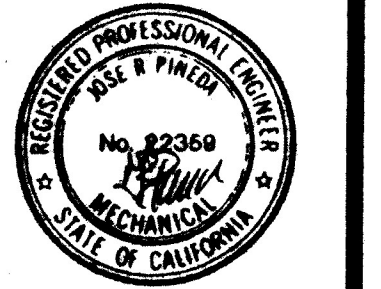
HIGH VELOCITY DUCT LEGEND																										
REDUCER	Y-FITTING	45° ELL																								
90° ELL	CONICAL TEE	90° TEE																								
		<table border="1"> <tr> <td>D</td> <td>L</td> <td>D</td> <td>L</td> </tr> <tr> <td>UP TO 12"</td> <td>12"</td> <td>UP TO 22"</td> <td>17"</td> </tr> <tr> <td>14"</td> <td>13"</td> <td>24"</td> <td>18"</td> </tr> <tr> <td>16"</td> <td>14"</td> <td>26"</td> <td>19"</td> </tr> <tr> <td>18"</td> <td>15"</td> <td>28"</td> <td>20"</td> </tr> <tr> <td>20"</td> <td>16"</td> <td>30"</td> <td>21"</td> </tr> </table>	D	L	D	L	UP TO 12"	12"	UP TO 22"	17"	14"	13"	24"	18"	16"	14"	26"	19"	18"	15"	28"	20"	20"	16"	30"	21"
D	L	D	L																							
UP TO 12"	12"	UP TO 22"	17"																							
14"	13"	24"	18"																							
16"	14"	26"	19"																							
18"	15"	28"	20"																							
20"	16"	30"	21"																							
45° TEE	45°-90° ELL																									
	<p>NOTES:</p> <ol style="list-style-type: none"> CONTRACTOR TO INSTALL 20GA. PERFORATED SHEET METAL SOUND BAFFLE FLUSH WITH MAIN DUCT. 1/2" HOLES ON 1 1/16" CENTERS. DIAMETER OF CIRCLE BENT TO FIT MAIN DUCT=1.6 x D (DIAMETER OF BRANCH DUCT). WELD BAFFLE TO MAIN PART OF FITTING. THE PERFORATED BAFFLE OCCURS ON BRANCH CONICAL TAKE-OFFS TO TERMINAL BOXES ONLY. T=1.5D FOR ALL DUCT SIZES. ASTERISK (*) INSTALL DRIFICE AT THIS LOCATION. SIZE AS INDICATED ON DRAWINGS. USE SLICE INSTEAD OF ROUND/RECTANGULAR/ROUND WHERE b/D IS GREATER THAN 2/3. USE ONLY AT LOCATIONS SHOWN ON DRAWINGS OR WHERE NECESSARY TO CLEAR AN OBSTRUCTION WHEN APPROVED BY THE ARCHITECT. 																									
SEE NOTE #4	SLICE IN ROUND DUCT																									

LOW VELOCITY DUCT LEGEND			
SINGLE LINE	DOUBLE LINE	SINGLE LINE	DOUBLE LINE
REDUCER	Y-FITTING	45° ELL	AIRFOIL TURNING VANE ELL
45° TEE	90° TEE	LINED DUCT	FLEX DUCT
90° ELL	RECTANGULAR TEE		

REVISIONS	BY
10-24-84	



PRACTICON ASSOCIATES
 CONSULTING ENGINEERS
 307 E. CHARLESTON ROAD
 PALO ALTO, CALIF. 94303
 (415) 464-9071

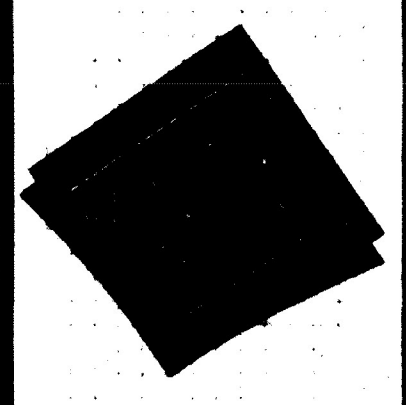


Civic Center Improvements
CITY OF CUPERTINO
 Cupertino, California

MECHANICAL LEGENDS
 DRAWING INDEX

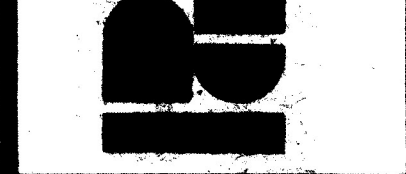
DRAWN
CHECKED
DATE 10-10-84
SCALE NONE
JOB NO.
SHEET
MO
OF SHEETS

REVISIONS	BY
△ 10-24-06	FP
△ 11-18-06	RP



Professional Seal & Stamp
 State of California
 License No. 44523
 Date of Issuance 08/14/06
 Expiration Date 08/14/11

PRACTITION ASSOCIATES
 CONSULTING ENGINEERS
 1000 BAYVIEW BLVD
 FLOOR 1000
 PALM BEACH, FL 33480
 P.A.C. #1000
 (407) 494-8871



Civic Center Improvements
CITY OF CUPERTINO
 Cupertino, California

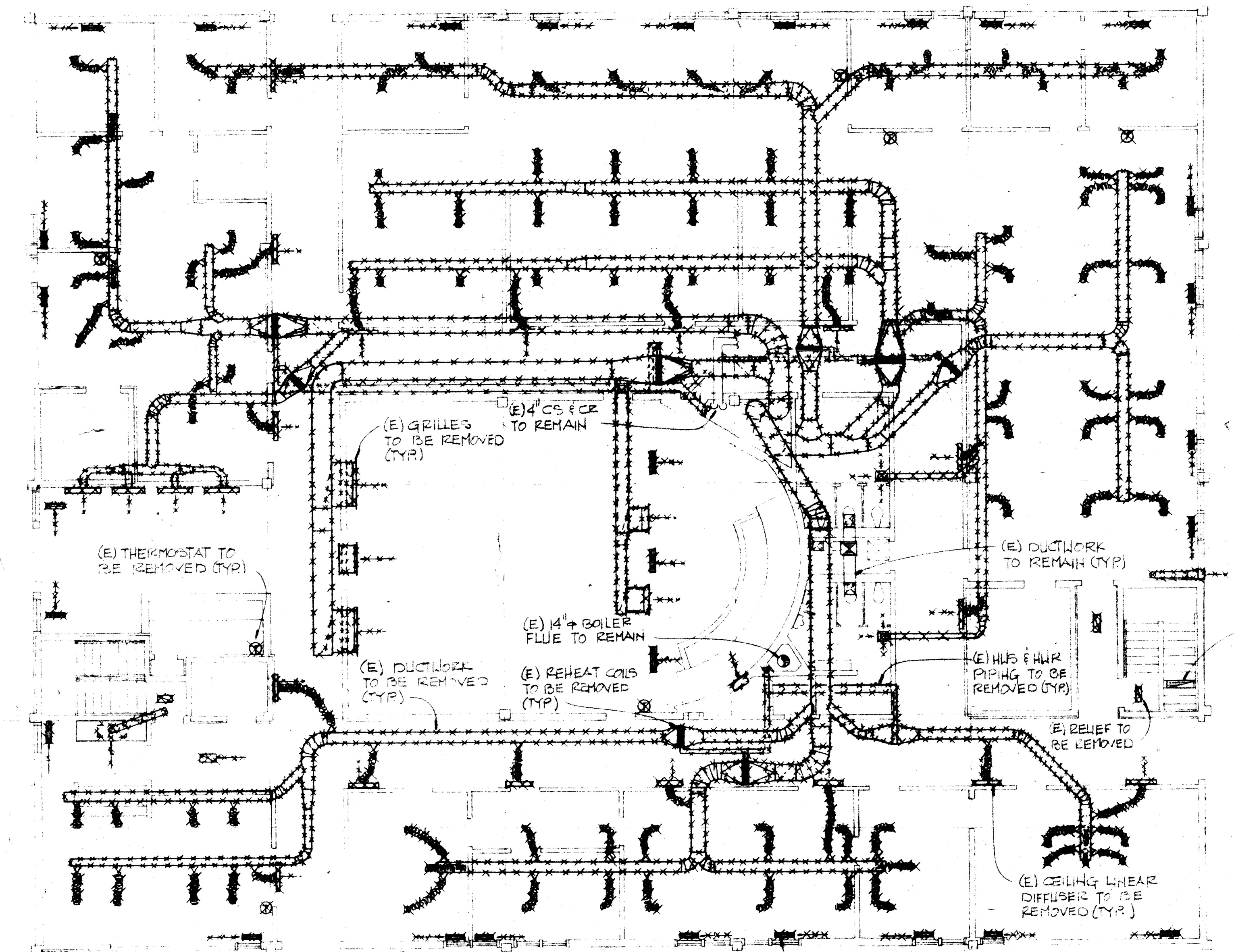
CITY HALL
 MECHANICAL
 FIRST FLOOR
 DEMOLITION PLAN

DRAWN
 CHECKED
 DATE 10-10-06
 SCALE AS NOTED
 JOB NO.

SHEET
M1.1

OF SHEETS

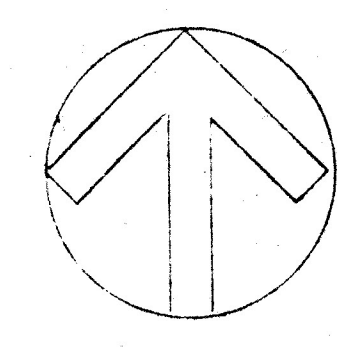
M A B C D E F FF



NOTES:

- CONTRACTOR SHALL REMOVE ALL OF EXISTING DUCT MATERIALS BEING REMOVED. DISPOSAL SHALL BE DONE IN MANNER THAT PROTECTS THE OWNER FROM ANY LIABILITY AND SHALL BE MADE AT A SITE APPROVED TO ACCEPT THE TYPE OF MATERIALS BEING DISPOSED OF. ALL EQUIPMENT (BOILER, EXH. FANS, COOLING TOWER, CHILLER, PUMPS, AIR HANDLER, CRIBS, COILS, ETC) SHALL BECOME PROPERTY OF THE OWNER AND DISPOSED OR STORED AT SUCH LOCATION AS DIRECTED BY THE OWNER.
- REMOVE ALL (E) ROOM THERMOS, REHEAT COILS, VALVES, ACTUATORS AND ITS ASSOCIATED PIPING, REMOVE THE BY-PASS TRIP AND ITS WIRING FROM THE CONTROL CHAMBER.

- 5-5
- 5
- 4
- 3-3
- 3
- 2
- 1
- 1-1

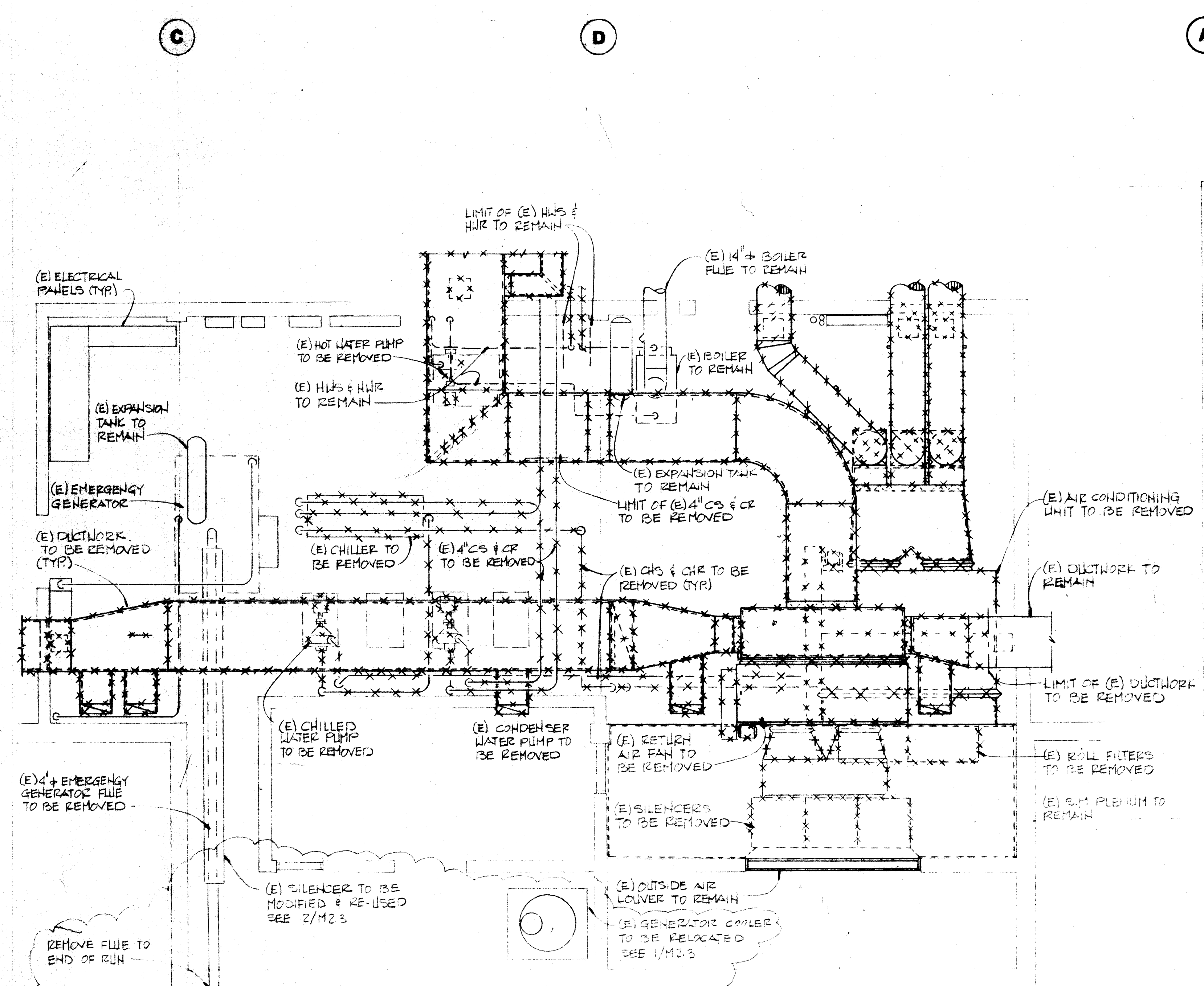


MECHANICAL FIRST FLOOR DEMOLITION PLAN
 10-11-06

AS SHOWN
 DATE 10-10-06
 CITY HALL
 1000 BAYVIEW BLVD
 PALM BEACH, FL 33480
 (407) 494-8871

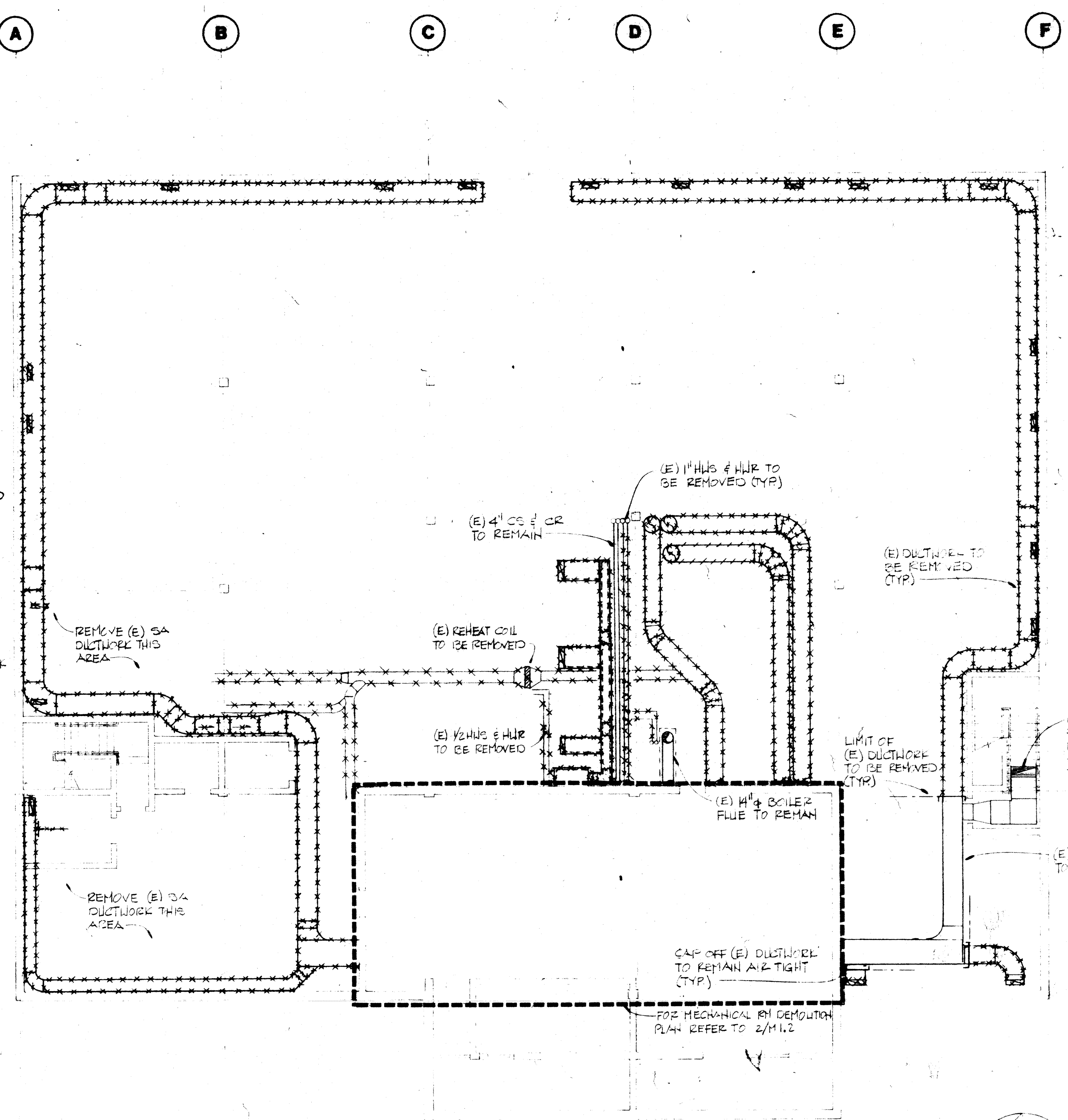
REVISIONS	BY
△ 10-24-86	RP
△ 11-18-86	RP

NOTES:
 ① CONTRACTOR SHALL DISPOSE ALL OF THE EXISTING DUCT MATERIALS BEING REMOVED. DISPOSAL SHALL BE DONE IN MANNER THAT PROTECTS THE OWNER FROM ANY LIABILITY AND SHALL BE MADE AT A SITE APPROVED TO ACCEPT THE TYPE OF MATERIALS BEING DISPOSED OF. ALL EQUIPMENT (ROOF EXH FANS, COILING TOWER, CHILLER, PUMPS, AIR HANDLER, REHEAT COILS ETC.) SHALL BECOME PROPERTY OF THE OWNER AND BE STORED AT SUCH LOCATION AS DIRECTED BY THE OWNER.

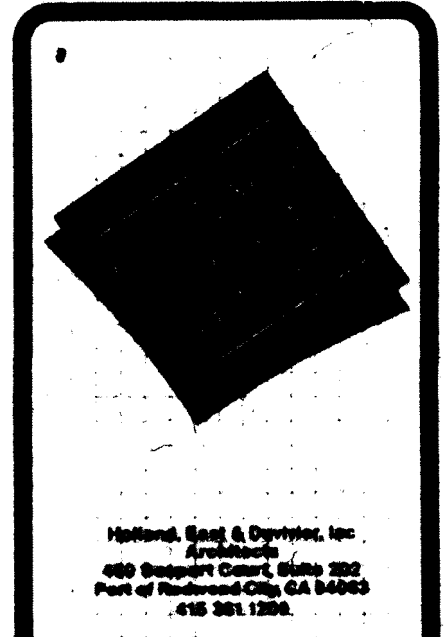


- NOTES:
- REMOVE THE (E) HOT WATER TEMPERATURE CONTROL PANEL & ITS ASSOCIATED WIRING, TUBING, INSTRUMENTS LIKE THERMOCouples, SELECTOR SWITCHES, BY-PASS THERM, TEMPERATURE CONTROL VALVE, S.A. DEMOS ETC.
 - REMOVE THE (E) AIR FLOW ECONOMIZER, CHILLED WATER TEMPERATURE CONTROL PANEL, ITS ASSOCIATED WIRING, TUBING & INSTRUMENTS LIKE THERMOCouples, S.A. DEMOS, THERM, SELECTOR SWITCHES, FLOW SWITCHES ETC.
 - REMOVE ALL THE (E) AUTOMATIC DAMPERS, ACTUATORS, TUBING, MANIFOLD GAUGES ASSOCIATED W/ THE (E) AIR HANDLER'S.

MECHANICAL ROOM DEMOLITION PLAN 2
 1/8" = 1'-0"



MECHANICAL TERRACE LEVEL DEMOLITION PLAN 1
 1/8" = 1'-0"



ROBERT J. PAPPALARDO
 CONSULTING ENGINEER
 1000 S. FLORENCE AVE. SUITE 100
 PALO ALTO, CALIF. 94303
 (415) 494-8371



Civic Center Improvements
CITY OF CUPERTINO
 Cupertino, California

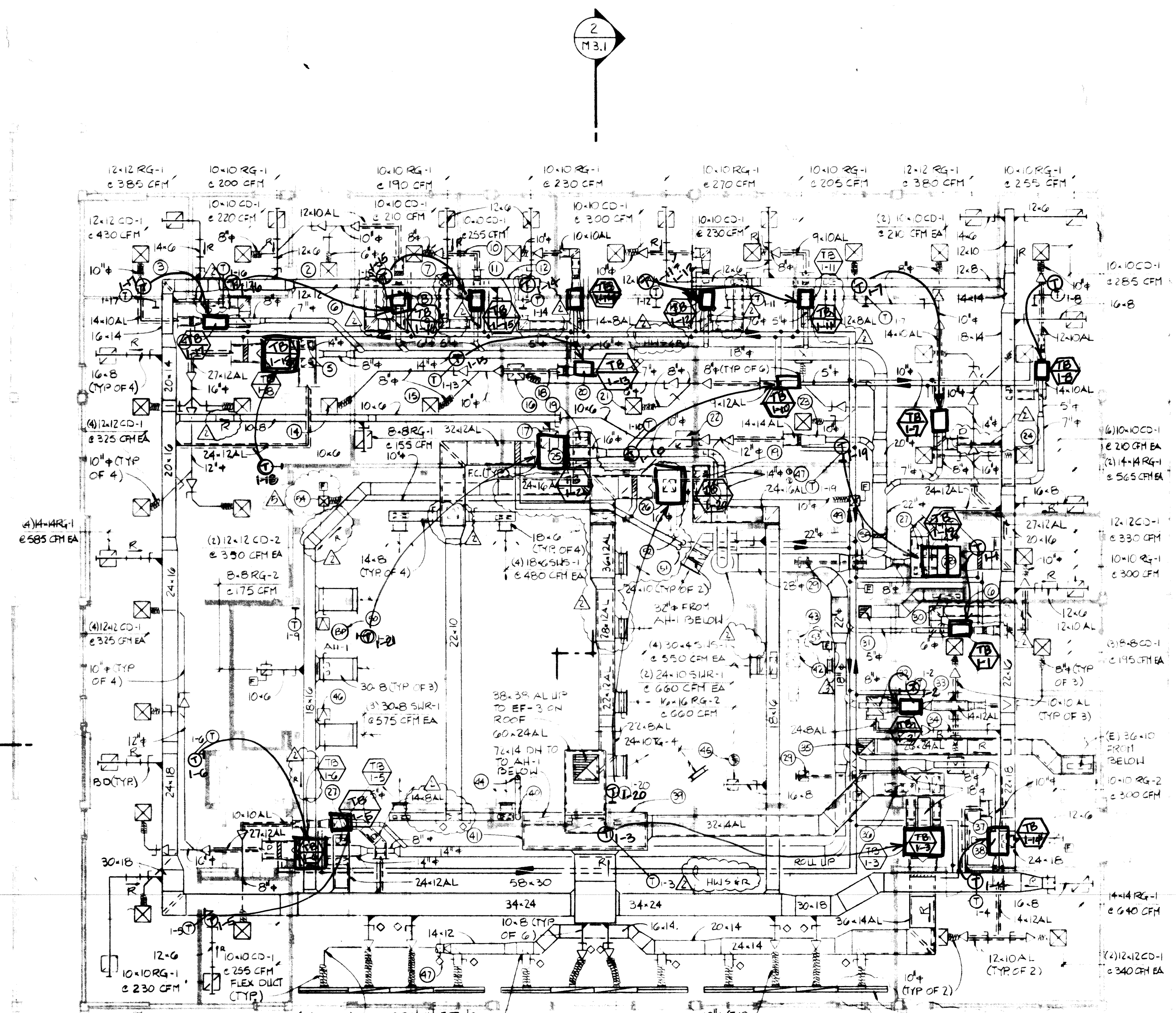
CITY HALL
 MECHANICAL
 TERRACE LEVEL & MECHANICAL RM.
 DEMOLITION PLAN

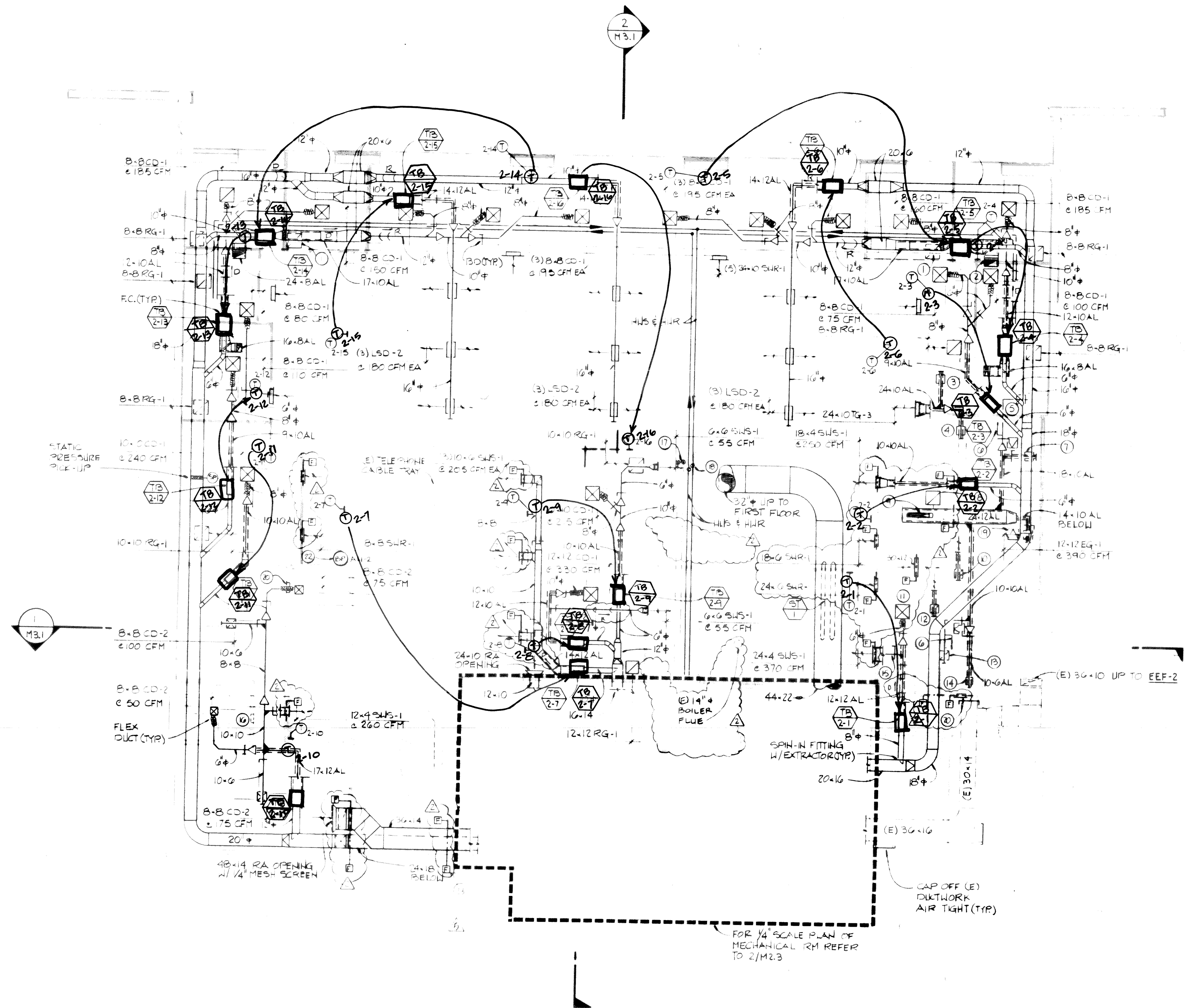
DRAWN
CHECKED
DATE 10-10-86
SCALE AS NOTED
JOB NO.
SHEET M1.2
OF SHEETS

NOTES:

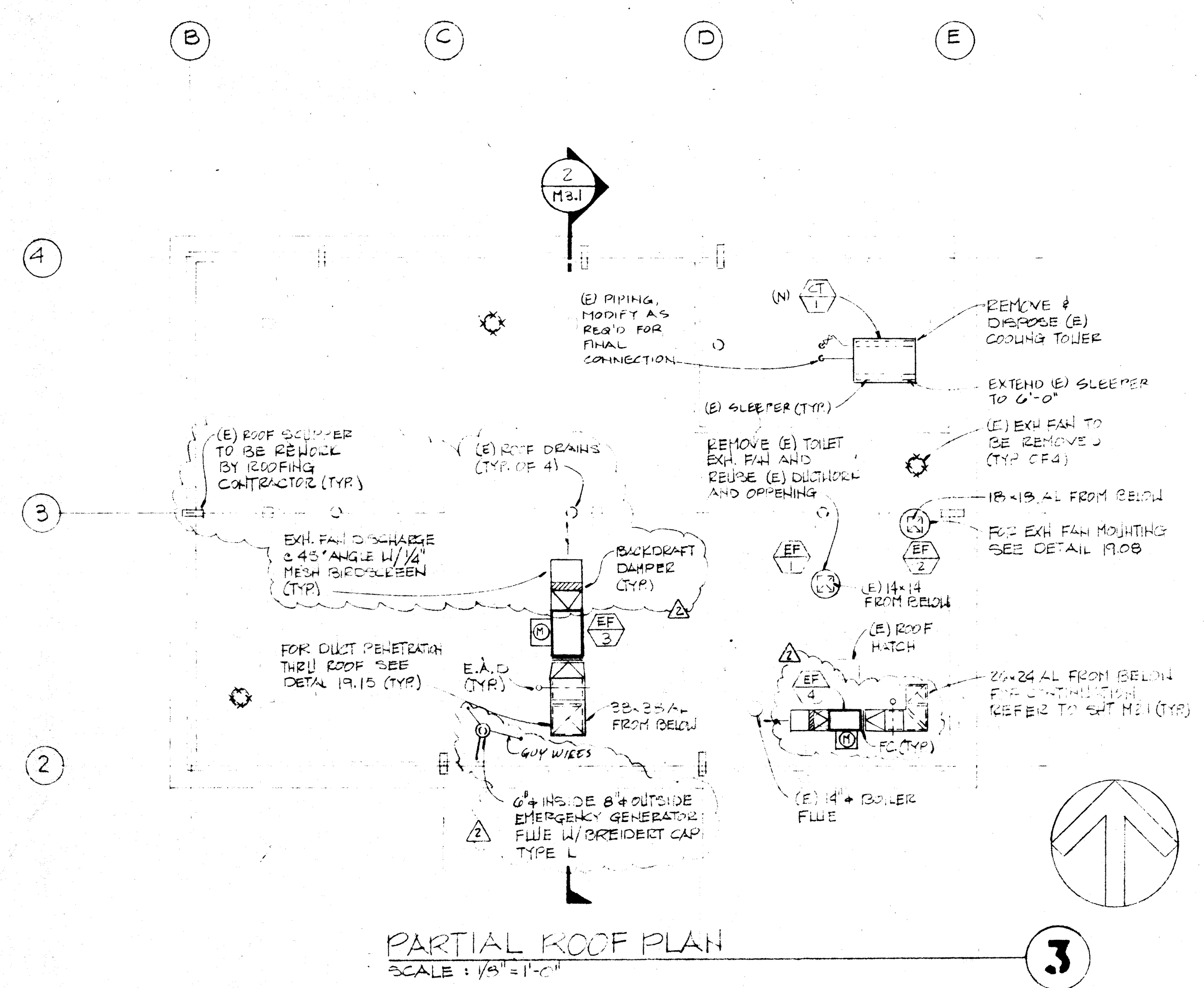
- 1 REFER TO HOT WATER PIPING DIAGRAM 2/M4.1 FOR SIZES ALL PIPING
- 2 B-B CD-1 @ 130 CFM
- 3 B-B AL
- 4 TB 1-17
- 5 (2) B-10 AL
- 6 B-B AL
- 7 TB 1-16
- 8 TB 1-16
- 9 B-B AL
- 10 9-10 AL
- 11 10-10 RG-1 @ 245 CFM 1/2" O.D. DUCT
- 12 12-10
- 13 TB 1-12
- 14 10-10 CD-1 @ 200 CFM
- 15 B-B CD-1 @ 170 CFM
- 16 B-B CD-1 @ 80 CFM
- 17 B-B RG-1 @ 70 CFM 1/2" O.D. DUCT
- 18 12-10 AL
- 19 (2) 24-12 AL
- 20 TB 1-13
- 21 B-B CD-1 @ 140 CFM
- 22 B-B RG-1 @ 120 CFM
- 23 TB 1-19
- 24 B-B AL
- 25 TB 1-21
- 26 TB 1-20
- 27 (2) B-10 AL
- 28 TB 1-19
- 29 (2) 12-12 TG-2 1/2" 14-BAL DUCT
- 30 44-6 FROM TERRACE LEVEL FOR CONTINUATION REFER TO SHI, M2.2 (TYP)
- 31 B-B AL UP TO EF-2 ON ROOF FOR CONTINUATION REFER TO 5/M2.3 (TYP)
- 32 TB 1-12
- 33 14-14 RG-1 @ 525 CFM
- 34 16-8
- 35 26-24 AL UP TO EF-4 ON ROOF
- 36 (2) 24-12 AL
- 37 22-10 AL
- 38 TB 1-4
- 39 4-4 OH TO AH-1 BELOW
- 40 8" INSIDE 8" OUTSIDE EMERGENCY GENERATOR FLUE FROM BELOW
- 41 54-32 AL RA PLENUM
- 42 (E) 14-14 UP TO (4) EF-1
- 43 (E) 10-10 EXH REGISTER SET BALANCE DAMPER @ 200 CFM (TYP OF 2)
- 44 8" INSIDE 8" OUTSIDE EMERGENCY GENERATOR FLUE UP THRU ROOF
- 45 (E) 14-14 BOILER FLUE UP THRU ROOF
- 46 18-18 ACCESS DOOR (TYP)
- 47 (E) 4" CG & CR UP TO (4) CIRCULING TOWER ON ROOF
- 48 CONCEALED DAMPER REGULATOR VENTLOCK 4000 (3/8" ROD & GALVANIZED COVER) WITH VENTLOCK 4000S OR 610 UNIVERSAL JOINTS & DAMPER ROD
- 49 STATIC PRESSURE PICKUP
- 50 20-PAAS THERM UNIT AH-1
- 51 HUB & HUB FROM TERRACE LEVEL
- 52 (E) 4" CG & CR FROM TERRACE LEVEL
- 53 8x8 TG-4 W/FIRE DAMPER
- 54 REFER TO DETAIL 2-24 & 19-05 FOR FIRE DAMPER INSTALLATION

AA A B C D E F FF

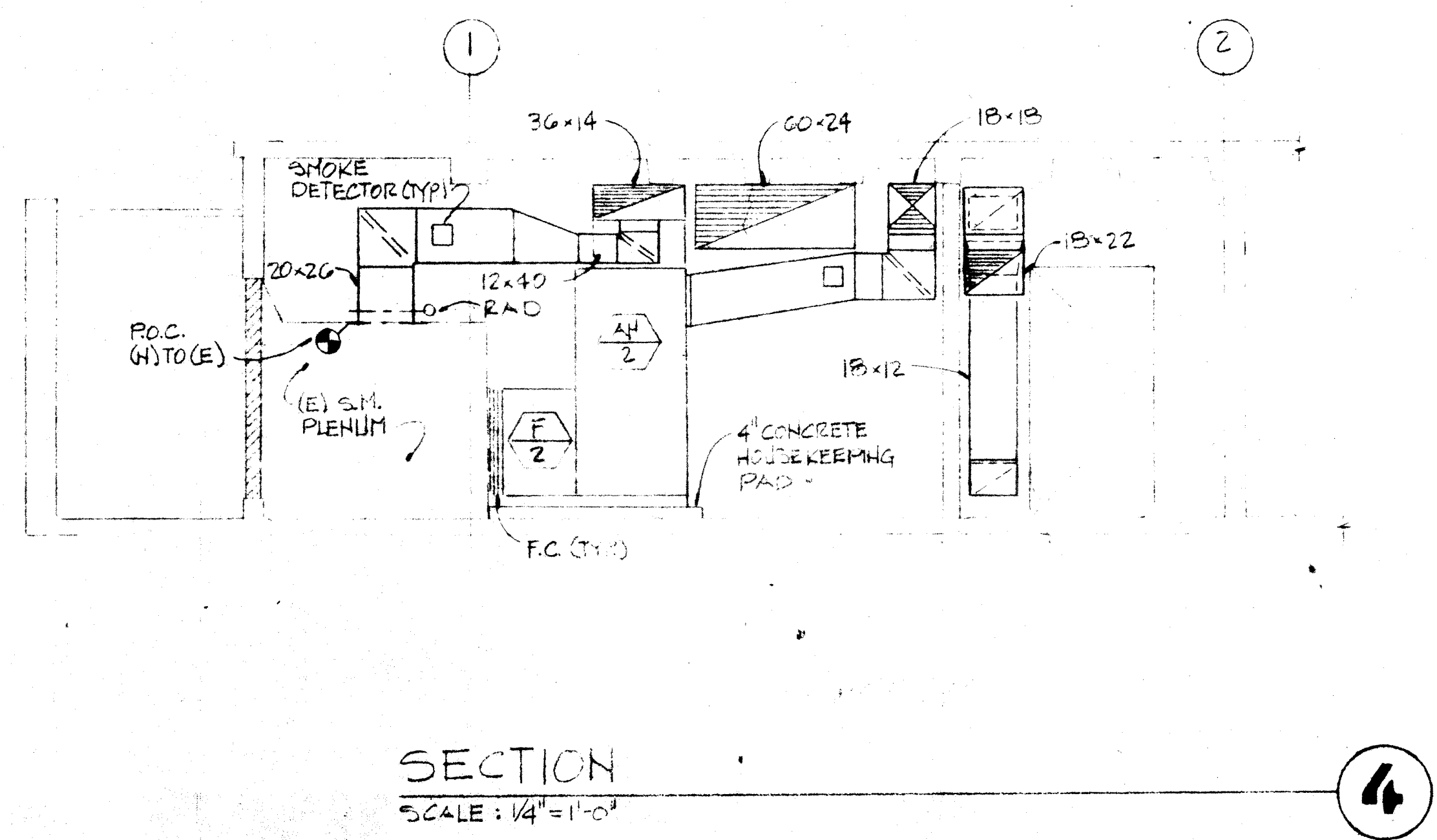




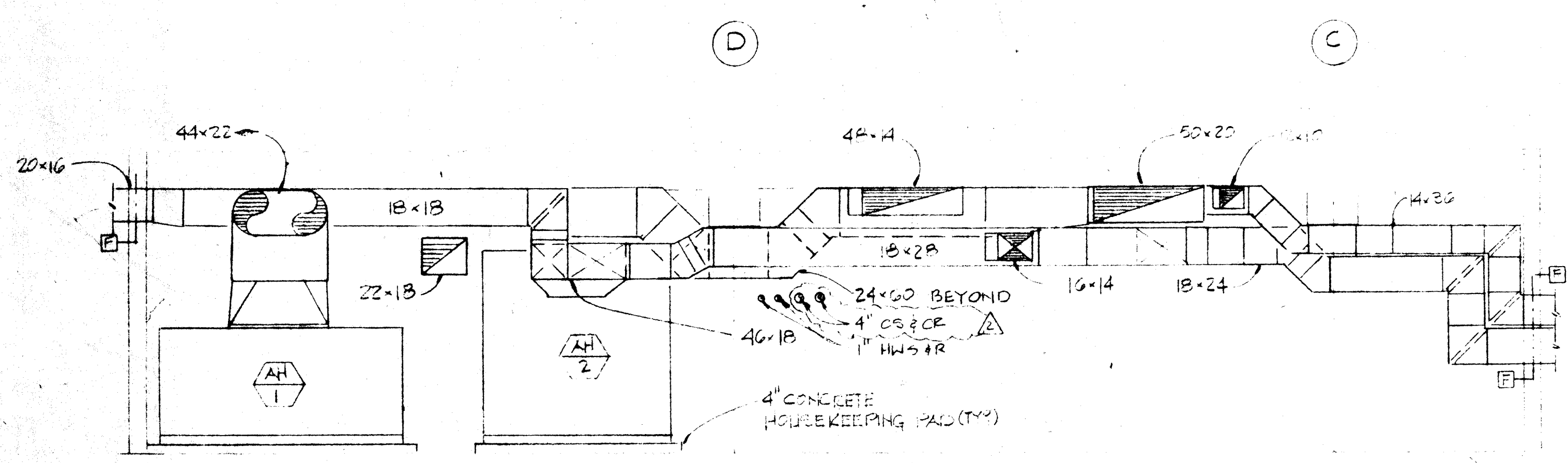
- NOTES:
- 1 B-B RG-1
 - 2 24-BAL
 - 3 12-12 TG-2 4/4-BAL DUCT
 - 4 12-12 TG-2 4/4-10AL DUCT
 - 5 12-12 EG-1 @ 290 CFM 4/12x6 ALUMINUM DUCT
 - 6 SLOPE 1/8" PER FT
 - 7 12-12 EG-1 @ 350 CFM 4/4-BAL DUCT
 - 8 B-B RG-1
 - 9 24-16 UP TO EEF-3 ON ROOF FOR CONTINUATION REFER TO SH-1 H2.1
 - 10 12-12 TG-2 4/4-10AL OPEN DUCT
 - 11 B-B CD-1 @ 125 CFM
 - 12 10-10 TG-2 4/12-BAL OPEN DUCT
 - 13 10-10 EG-1 @ 220 CFM 4/12x6 ALUMINUM DUCT
 - 14 B-B EG-1 @ 50 CFM
 - 15 24-4
 - 16 E) DOOR GRILLE TO REMAIN
 - 17 E) 4" CS # GR UP TO CF-1 ON 12/F
 - 18 HUB & HUB UP TO FIRST FLOOR
 - 19 18-18 ACCESS DOOR (TYP)
 - 20 1/2" B TG-4
 - 21 REFER TO HOT WATER PIPING DIAGRAM 2/H4.1 FOR SIZES ALL PIPING
 - 22 BYPASS TIMER UNIT AH-2
 - 23 REFER TO DETAILS 13.04 AND 13.05 FOR ACCESS PANEL INSTALLATION



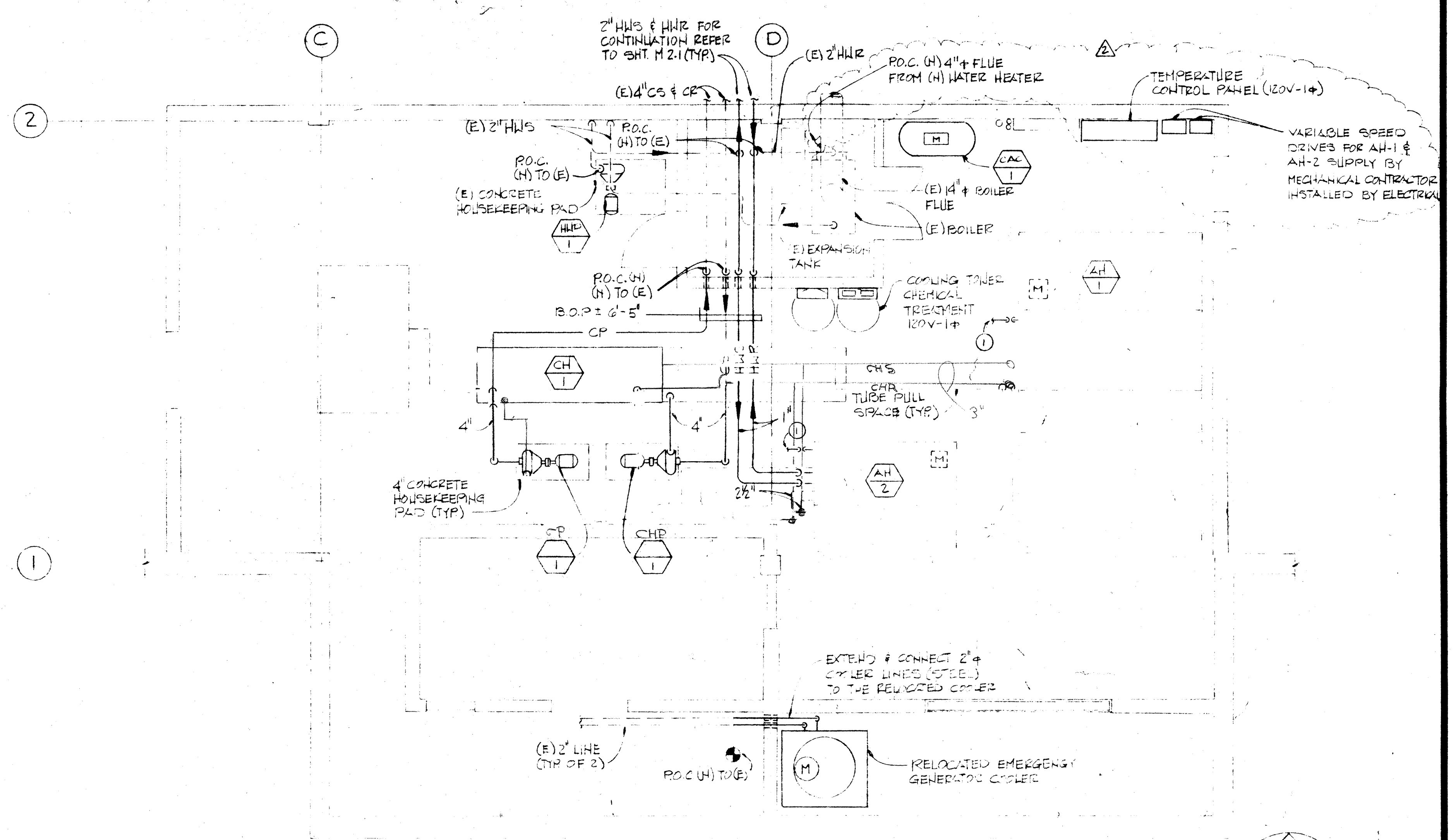
PARTIAL ROOF PLAN
SCALE: 1/8" = 1'-0"



SECTION
SCALE: 1/4" = 1'-0"

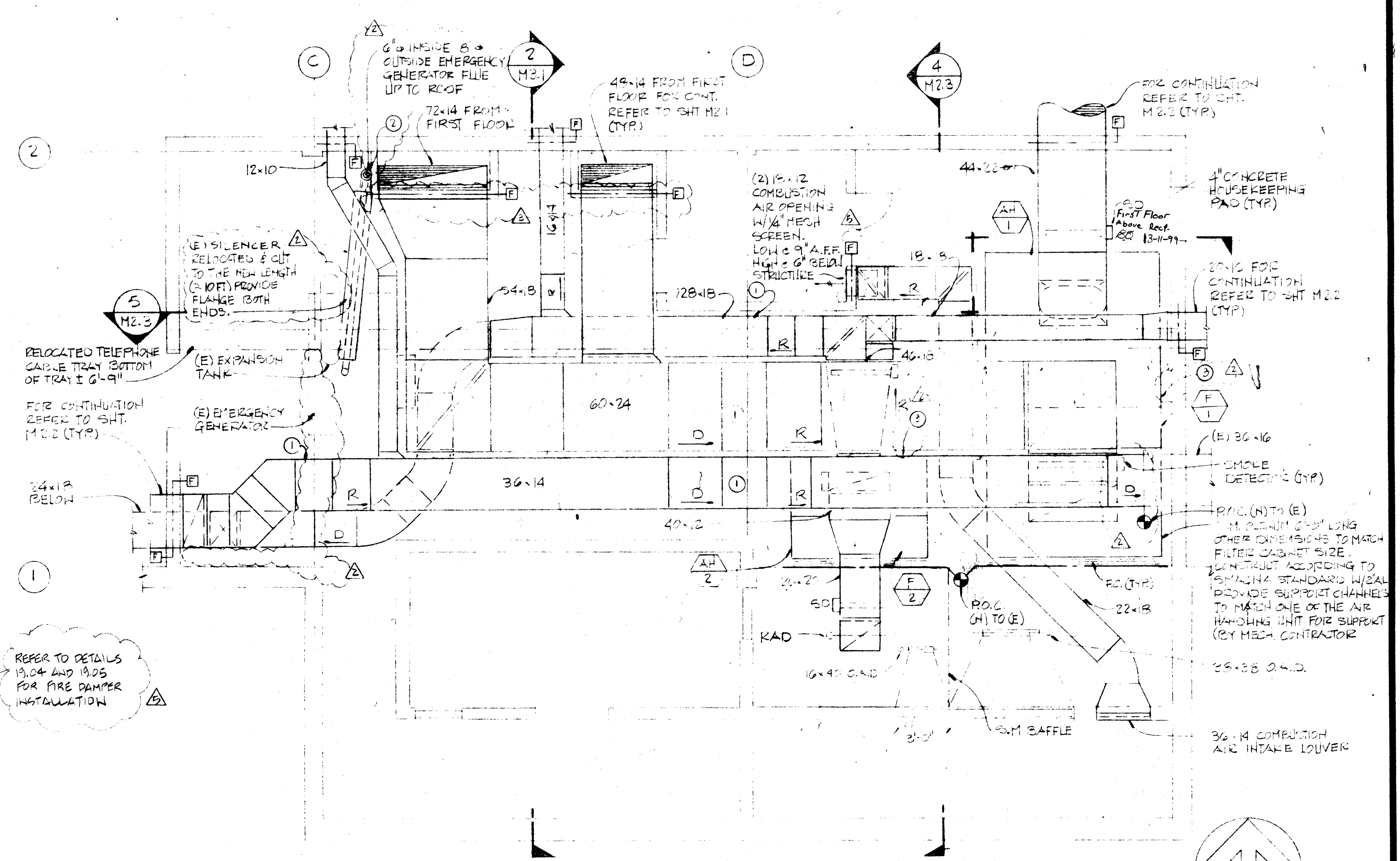


SECTION
SCALE: 1/4" = 1'-0"



NOTES:
① CONDENSATE DRAIN, SEE PLUMBING DRAWINGS FOR CONTINUATION

MECHANICAL RM. PLAN
SCALE: 1/4" = 1'-0"



NOTES:
① DUCT TIGHT TO THE BOTTOM OF BEAM
② (N) EMERGENCY GENERATOR FLEW SHALL BE 2\"/>

MECHANICAL RM. PLAN
SCALE: 1/4" = 1'-0"

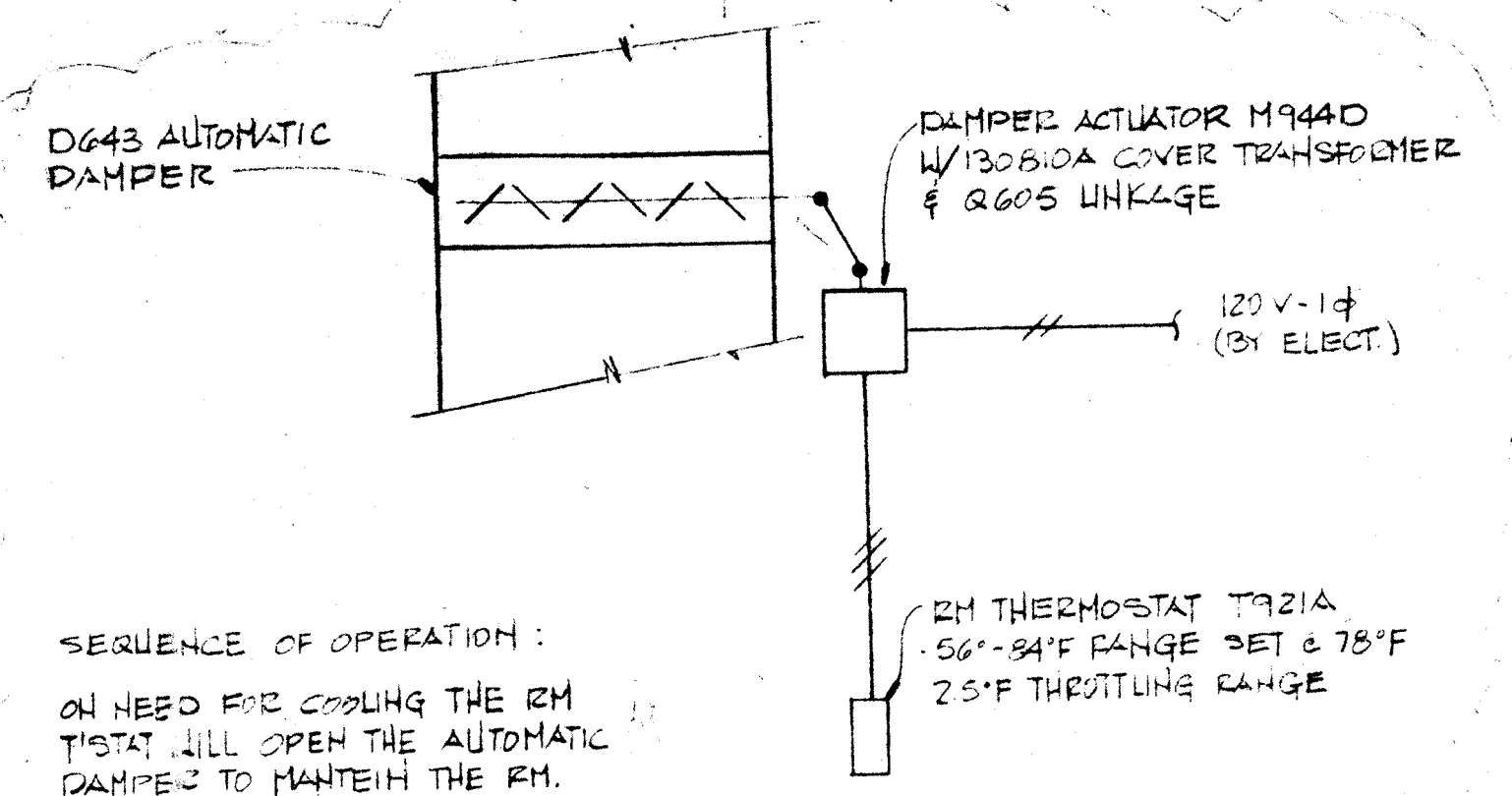
REVISIONS	BY
△ 10-23-86	RP
△ 11-18-86	RP
△ 11-21-86	RP
△ 12-18-86	

PRACTICONS ASSOCIATES
 CONSULTING ENGINEERS
 501 E. CHARLTON ROAD
 SAN JOSE, CALIF. 95128
 (415) 494-9571

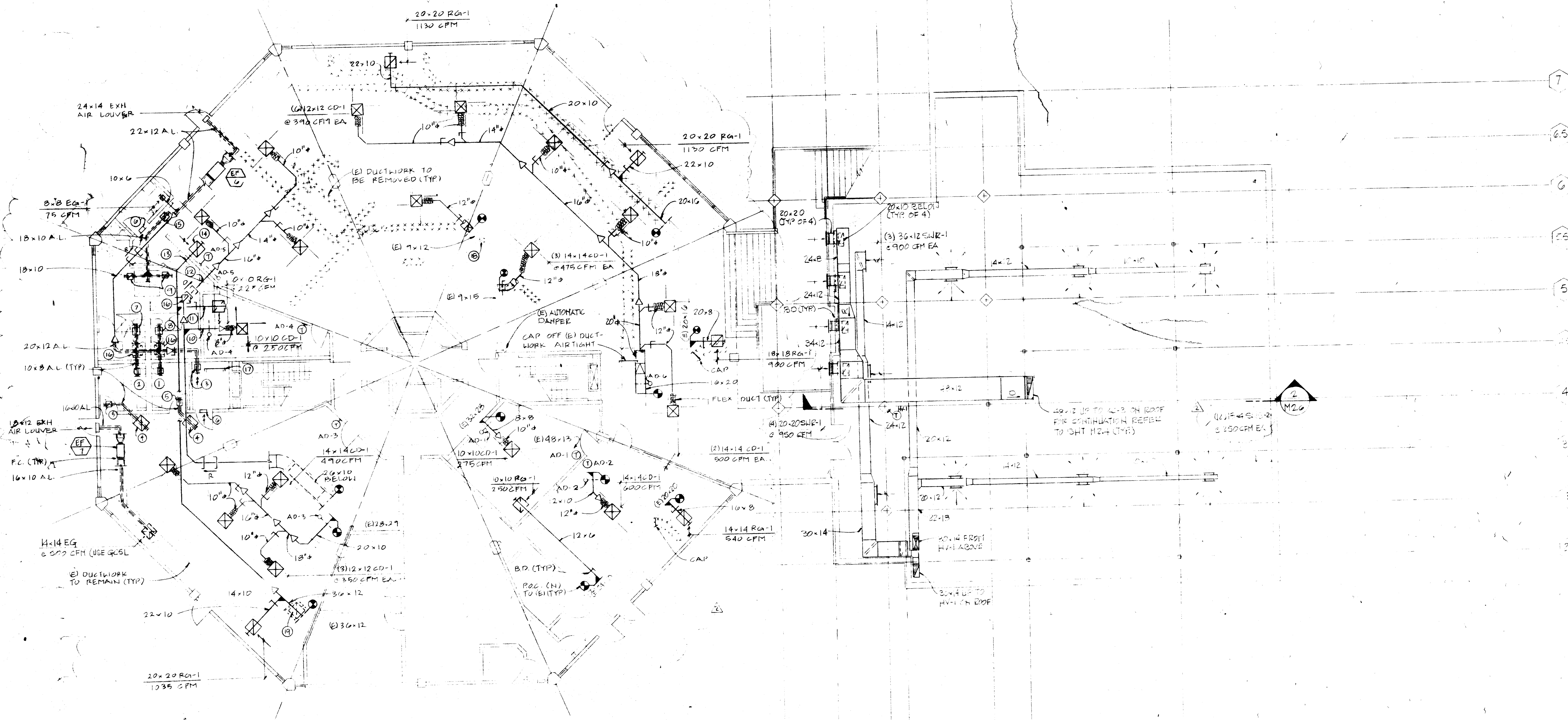
Civic Center Improvements
CITY OF CUPERTINO
 Cupertino, California

CITY HALL
 MECHANICAL
 PARTIAL FLOOR PLANS & SECTIONS

DRAWN	CHECKED	DATE	SCALE	JOB NO.	SHEET
		10-10-86	AS NOTED		M2.3

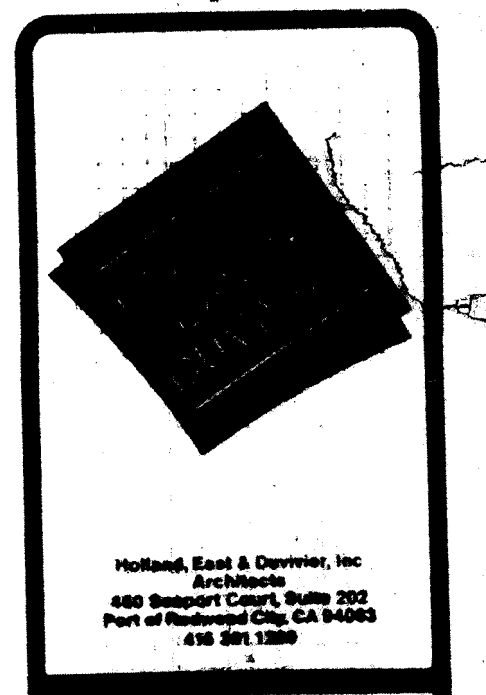


AUTOMATIC DAMPER CONTROL

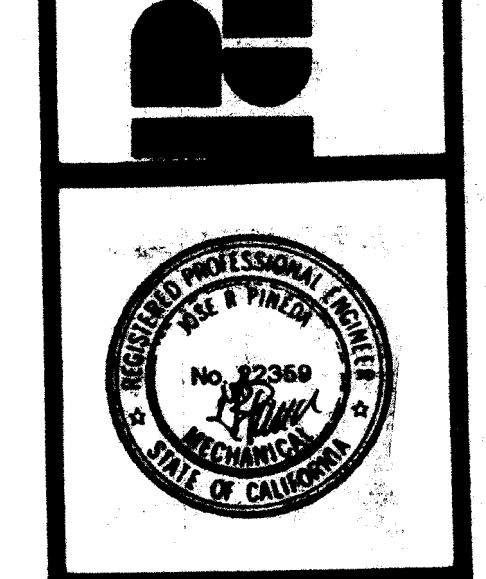


- NOTES:**
- ① 8-8 EG-1 @ 130 CFM
 - ② 8-8 EG-1 @ 150 CFM
 - ③ 8-8 EG-1 @ 75 CFM W/ 10x6 AL DUCT
 - ④ 8-8 TG-1
 - ⑤ 8-8 TG-2
 - ⑥ 12-6 TG-4
 - ⑦ 12-12 EG-1 @ 350 CFM W/ 14x10 AL DUCT
 - ⑧ 12-12 EG-1 @ 310 CFM W/ 14x8 AL DUCT
 - ⑨ 12-12 TG-2 W/ 14x10 AL DUCT
 - ⑩ 8-8
 - ⑪ 12-6
 - ⑫ 18x10
 - ⑬ 14-8
 - ⑭ 12x12 EG-1 @ 450 CFM
 - ⑮ 14-14 TG-1
 - ⑯ 13-15 ACCESS DOOR
 - ⑰ CAP (E) DUCTWORK AIR TIGHT
 - ⑱ (E) 3-8 DUCTWORK TO BE REMOVED CAP OFF RETURN AIR TIGHT
 - Ⓜ (E) 20-20 RETURN GRILLE TO BE REMOVED
 - Ⓝ REMOVE (E) EXHAUST FAN & ASSOCIATED DUCTWORK & GRILLES FROM (E) COMMUNITY RM

REVISIONS	BY
10-24-86	EF
11-13-86	EF



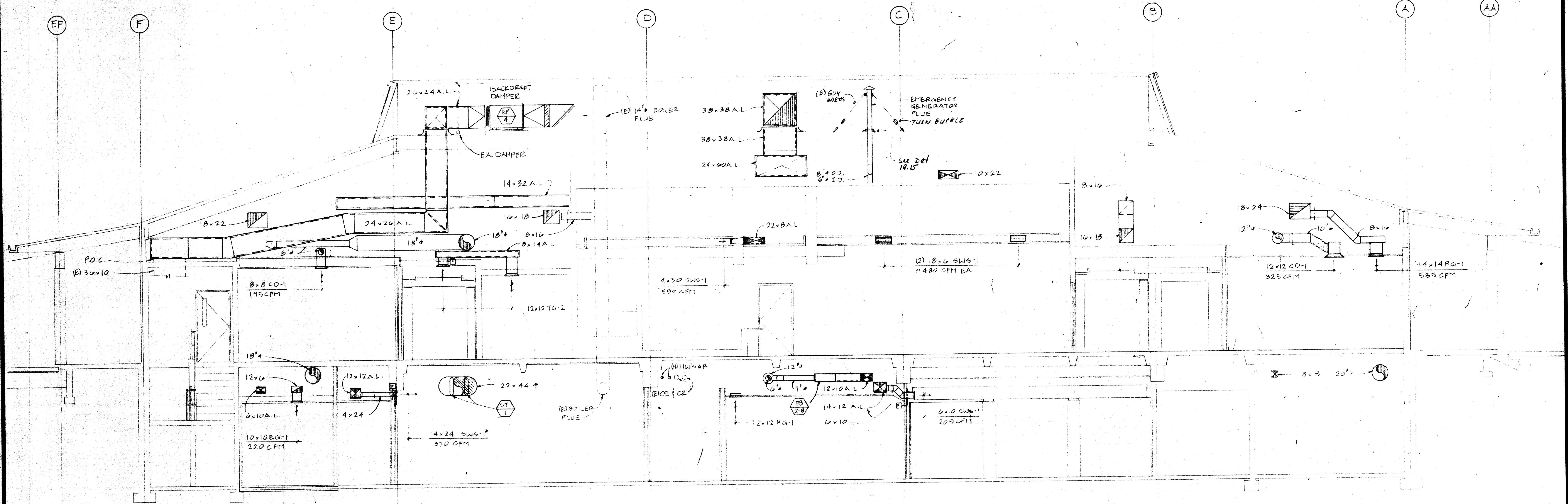
MARK A. DWYER, INC.
 REGISTERED PROFESSIONAL ENGINEERS
 CONSULTING ENGINEERS
 PALO ALTO, CALIF. 94303
 (415) 484-9371



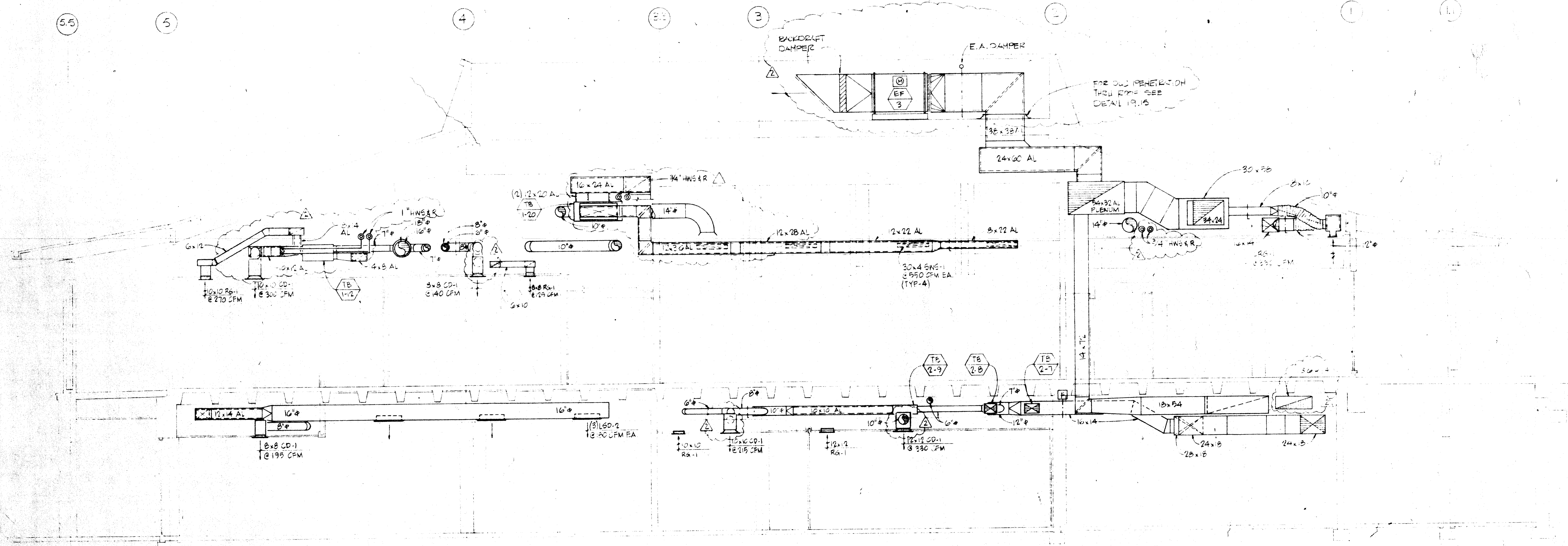
Civic Center Improvements
CITY OF CUPERTINO
 Cupertino, California

LIBRARY
 MECHANICAL
 TERRACE LEVEL PLAN

DRAWN
CHECKED
DATE 10-20-86
SCALE 1/8" = 1'-0"
JOB NO.
SHEET
M2,5
OF SHEETS

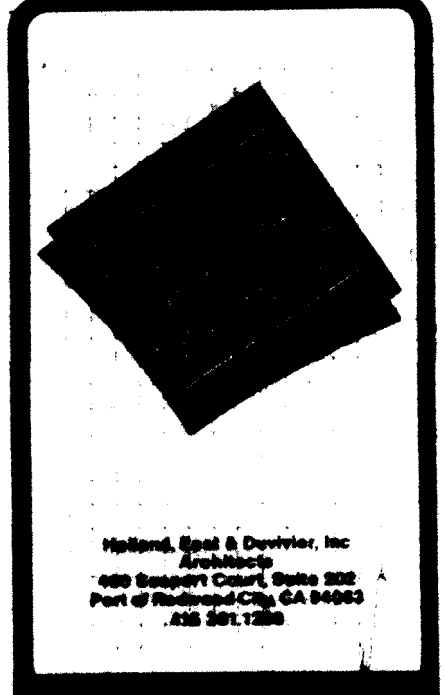


SECTION I
SCALE: 1/4" = 1'-0"



SECTION 2
SCALE: 1/4" = 1'-0"

REVISIONS	BY
10-24-86	EP
11-18-86	EP



PRACICON ASSOCIATES, INC.
PRACTICING ENGINEERS
505 E. CHARLESTON ROAD
PALO ALTO, CA. 94303
(415) 484-9371

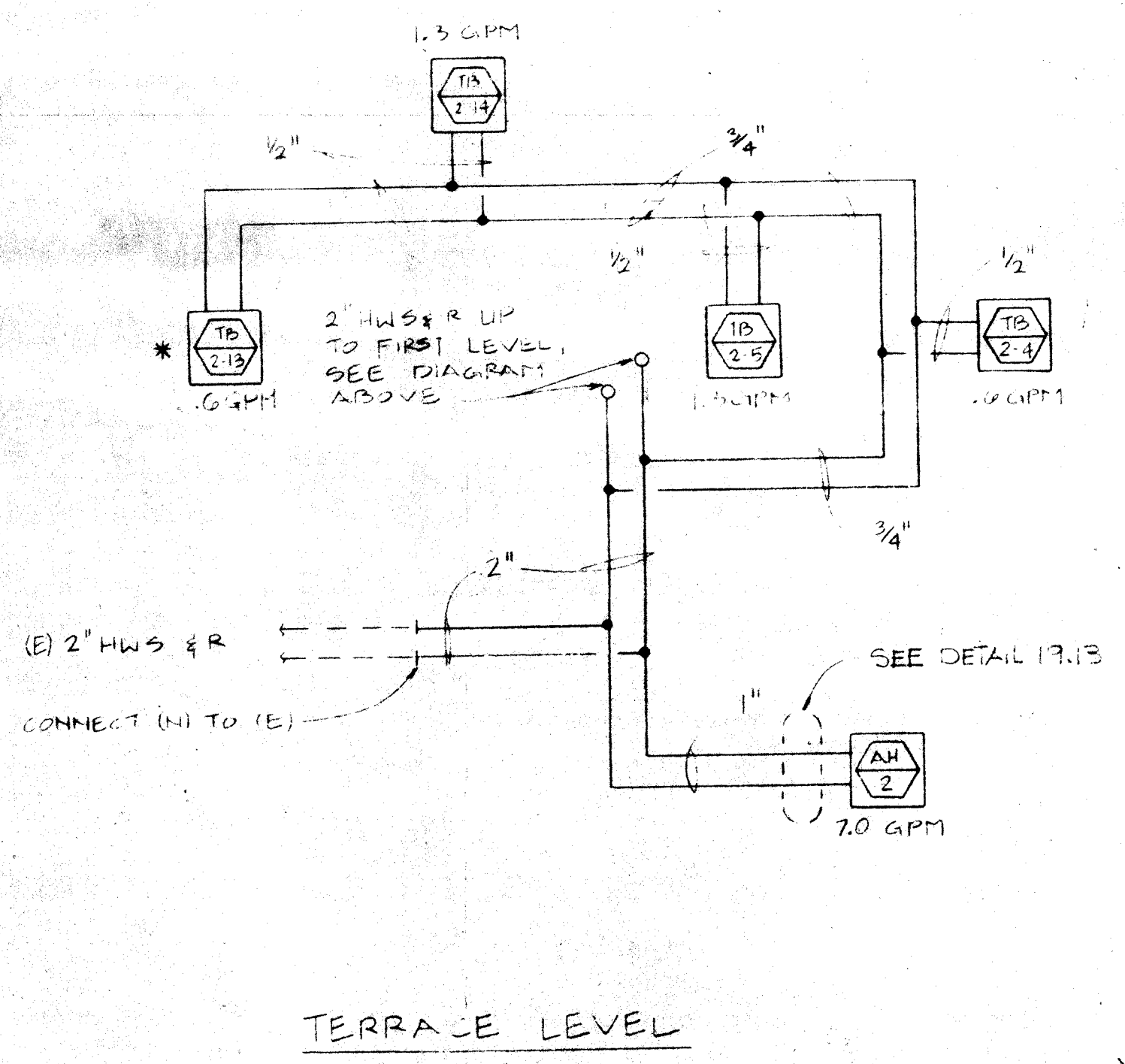
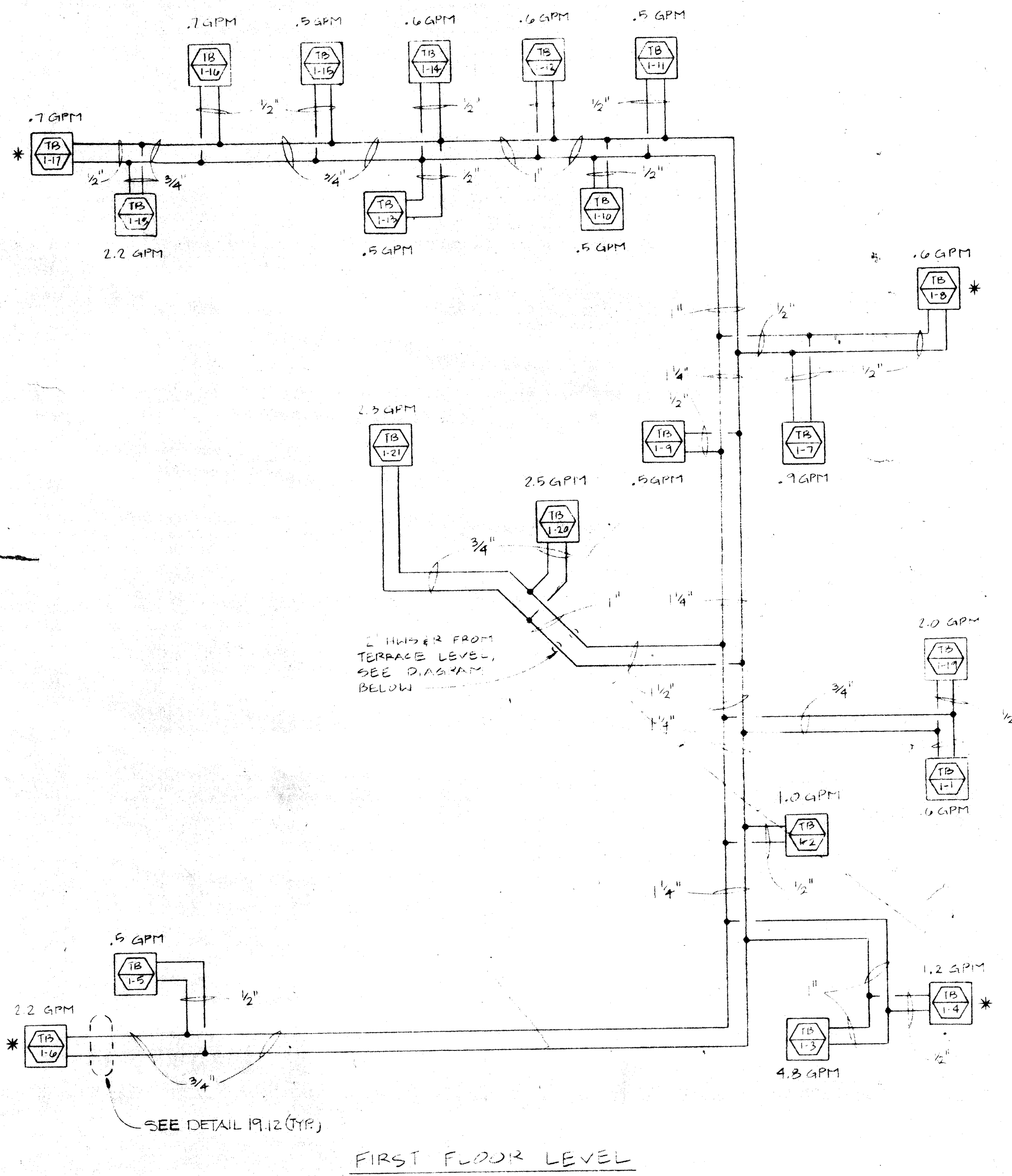


Civic Center Improvements
CITY OF CUPERTINO
Cupertino, California

CITY HALL
SECTIONS

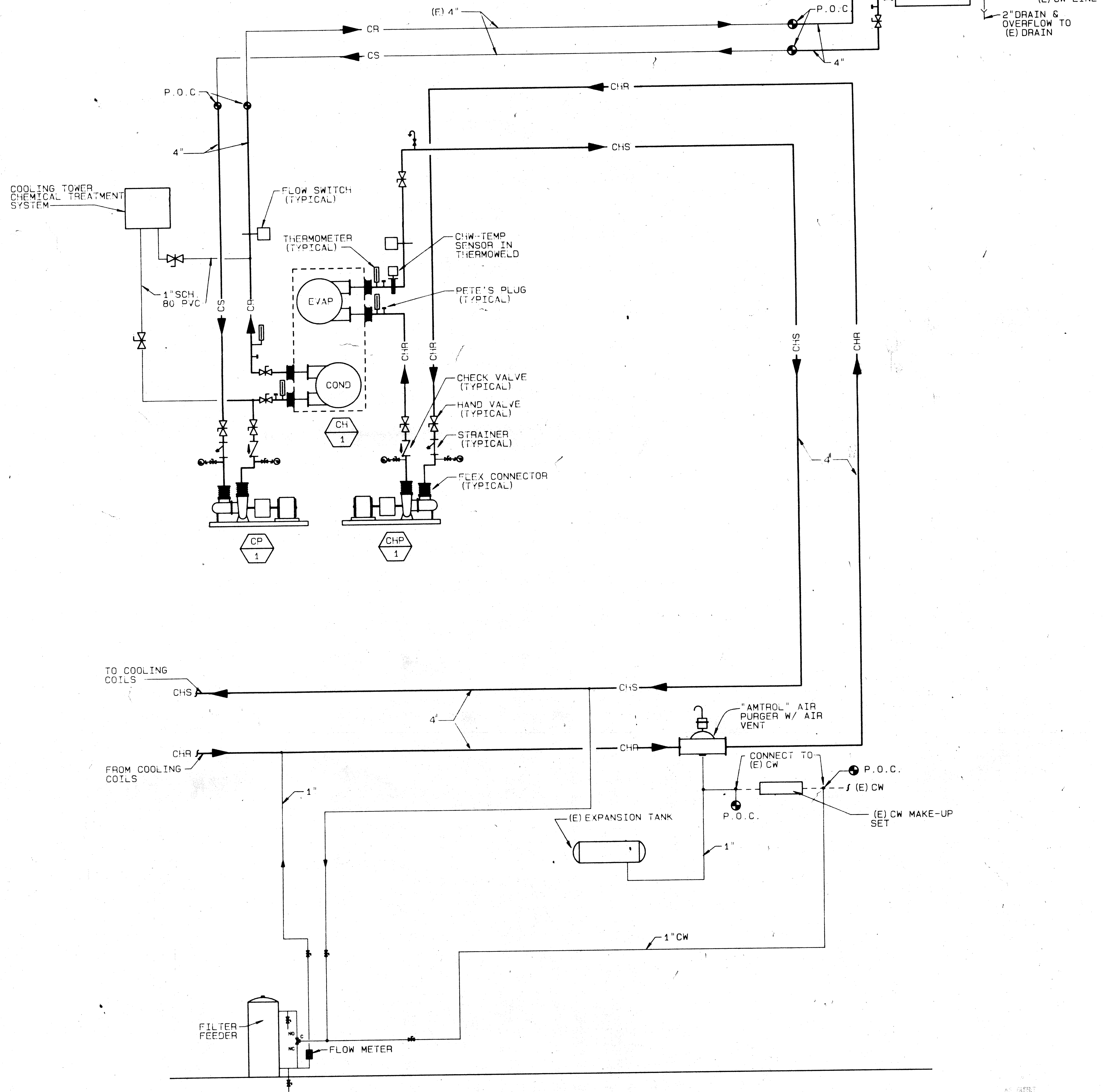
DRAWN	
CHECKED	
DATE	10-24-86
SCALE	AS NOTED
JOB NO.	
SHEET	
M3.1	
OF SHEETS	

51,045.31



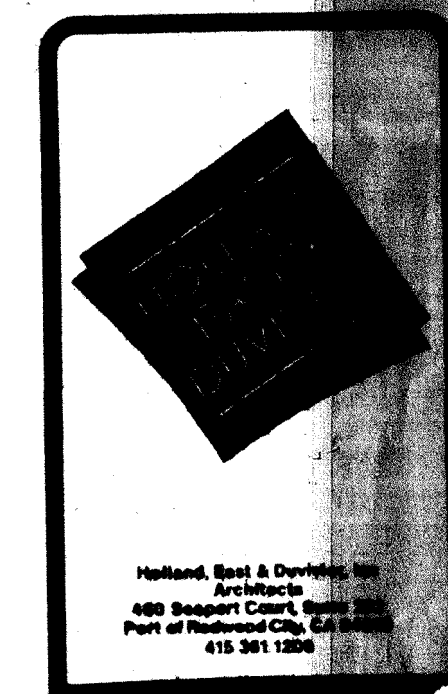
HOT WATER PIPING DIAGRAM 2

NOTE:
 * ASTERISK INDICATES A 3 WAY TEMPERATURE CONTROL VALVE (TCV)



CHILLED WATER PIPING DIAGRAM 1

REVISIONS
10-24-80

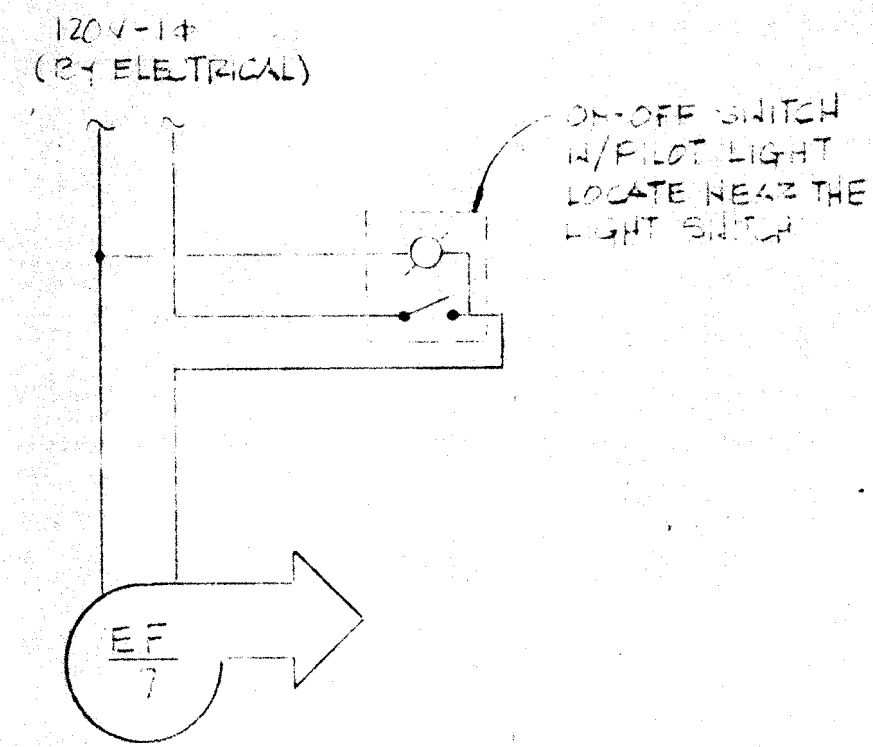


Practicing Engineer
 State of California
 License No. 48303
 Date of Issue 10/24/80

Civic Center Improvements
CITY OF CUPERTINO
 Planning Department
 4100 Faber Place
 Cupertino, CA 95014

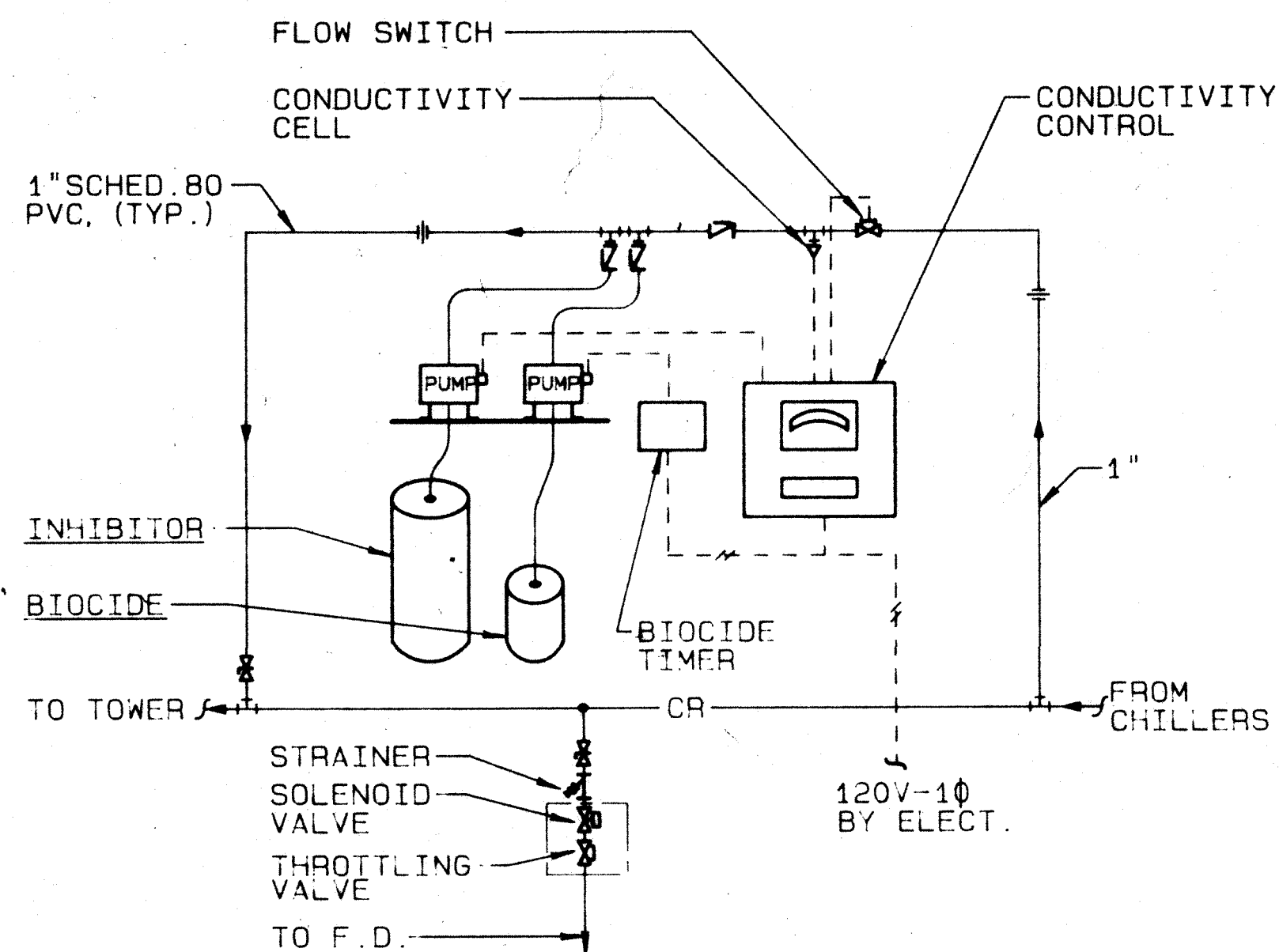
CITY HALL
 PLUMBING DIAGRAM

DATE	10-10-80
SCALE	NOT TO SCALE
JOB NO.	
DRW. NO.	
BY	
CHECKED	
DATE	



EXHAUST FAN CONTROL

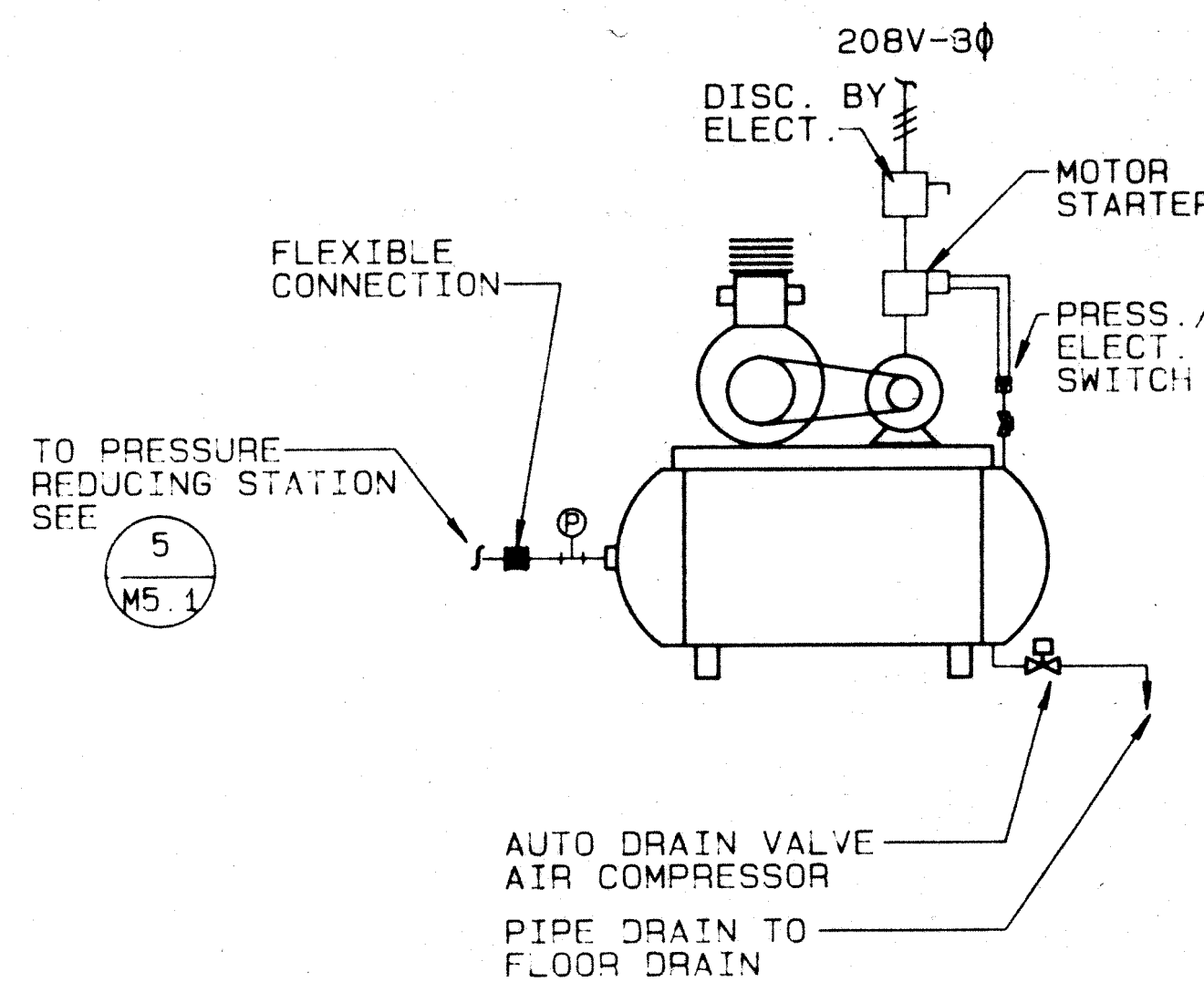
10



COOLING TOWER CHEMICAL FEED & CONTROL

NOT TO SCALE

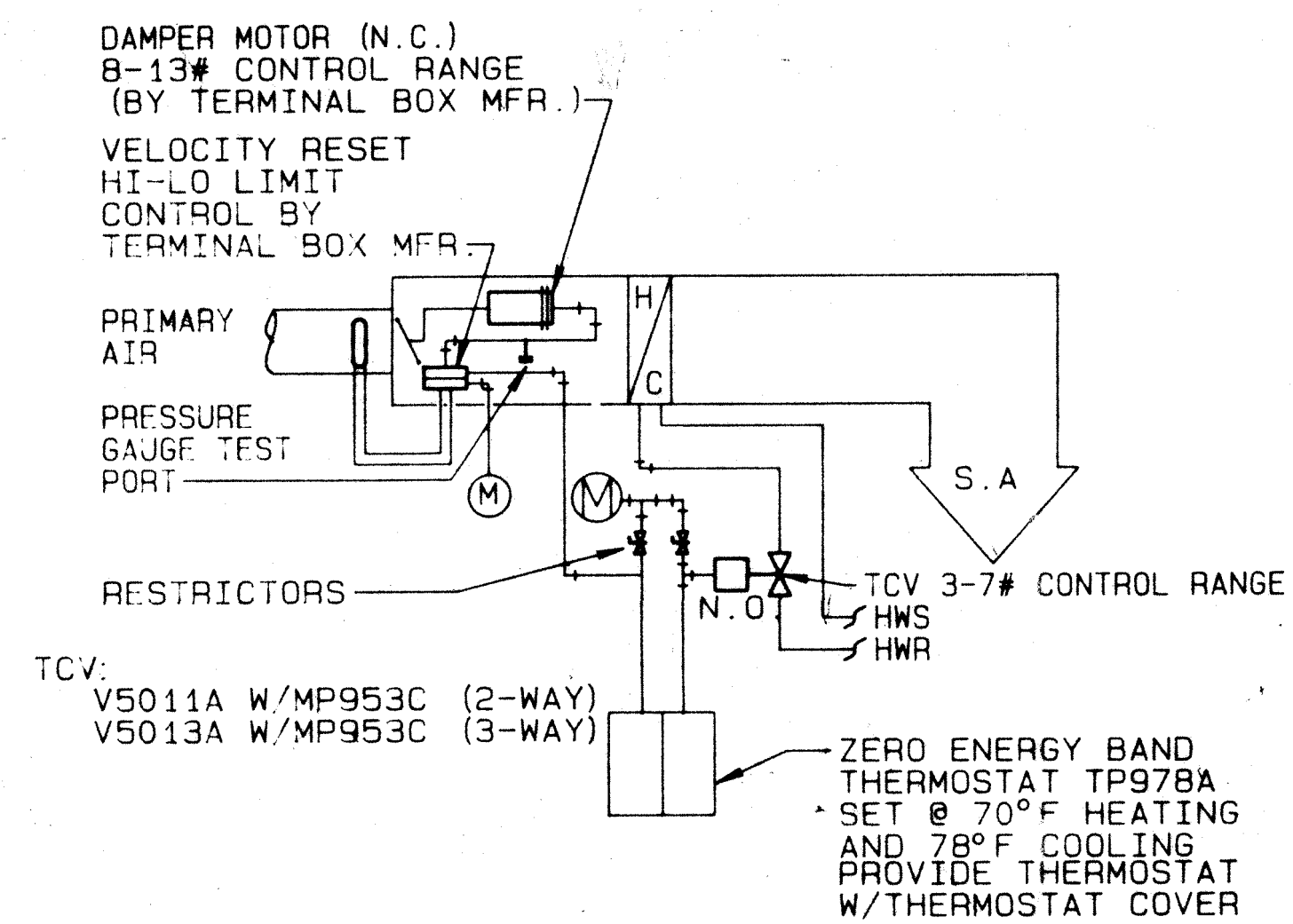
7



CONTROL AIR COMPRESSOR DIAGRAM

NOT TO SCALE

4

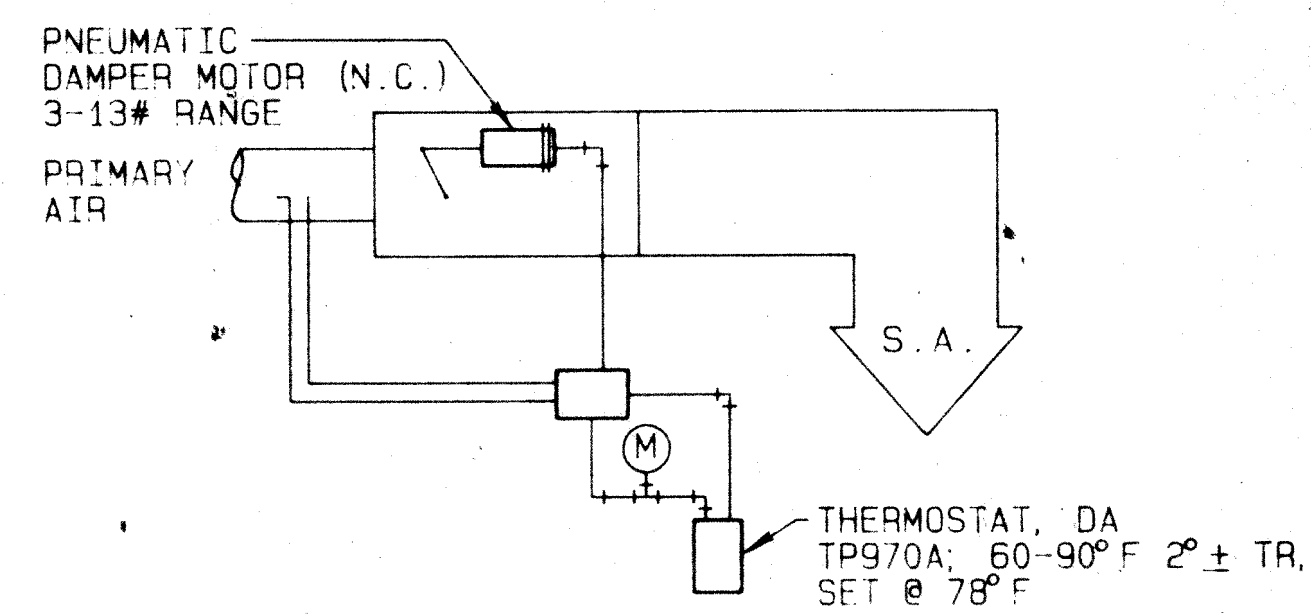


TYP. VAV TERMINAL BOX CONTROL DIAGRAMS

NOT TO SCALE

1

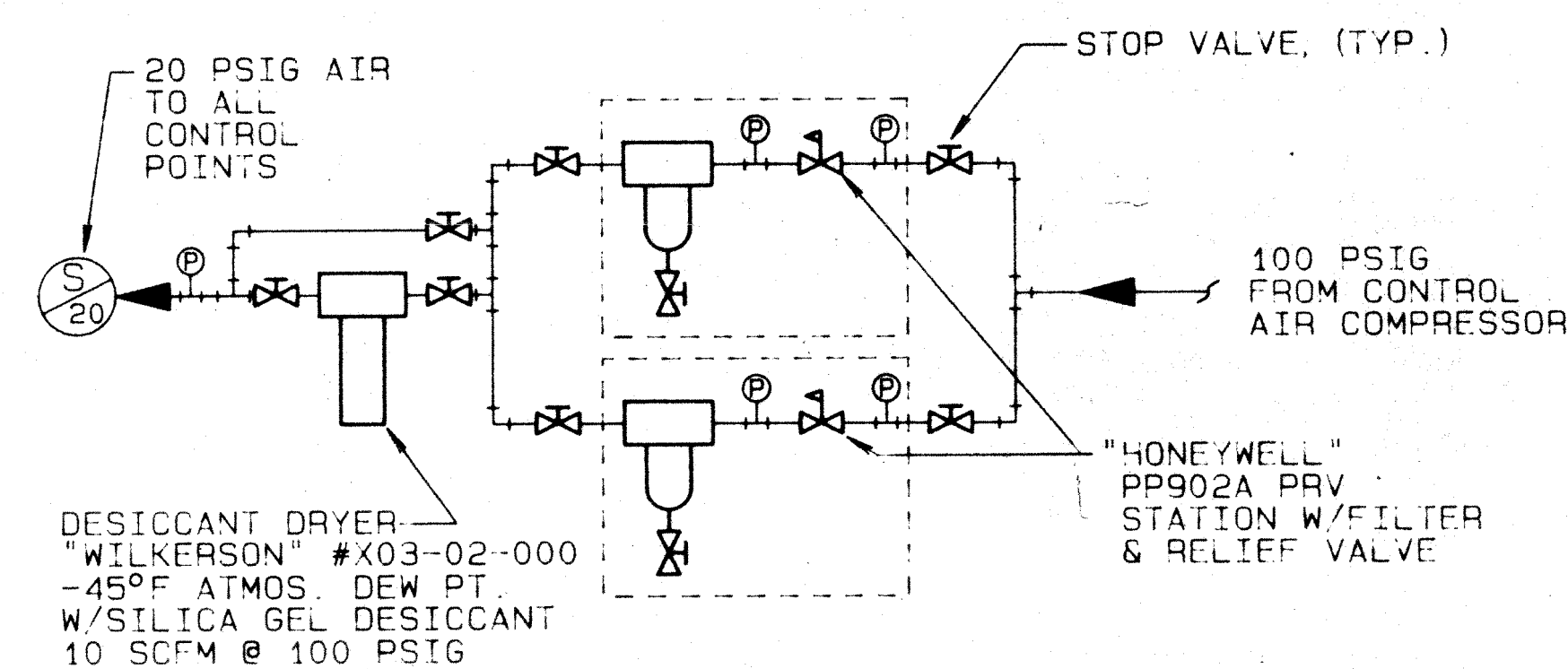
TCV:
V5011A W/MP953C (2-WAY)
V5013A W/MP953C (3-WAY)



TYP. VAV TERMINAL BOX CONTROL DIAGRAM

NOT TO SCALE

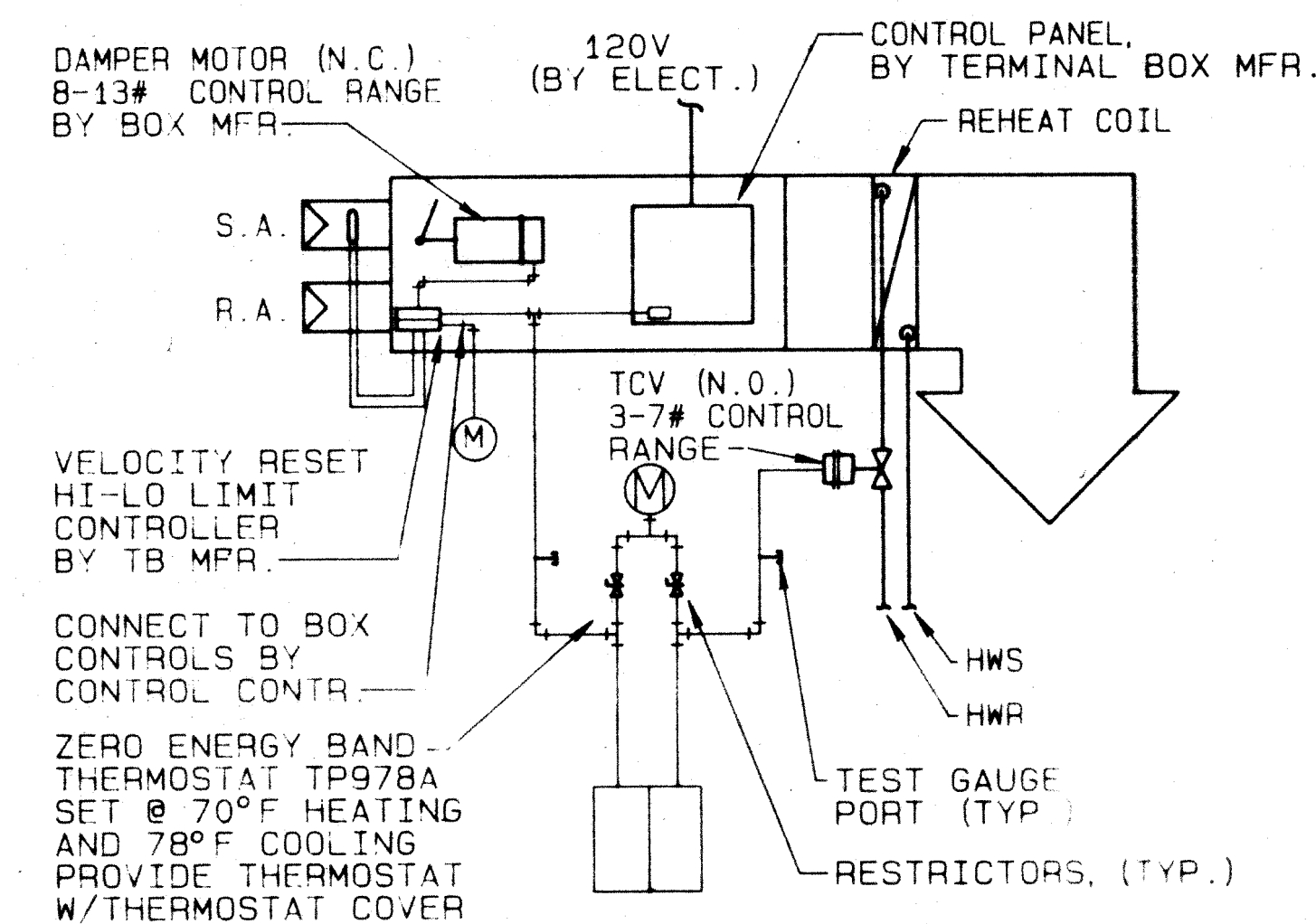
8



TYP. CONTROL AIR PRESSURE REDUCING STATION

NOT TO SCALE

5



FAN TERMINAL CONTROL

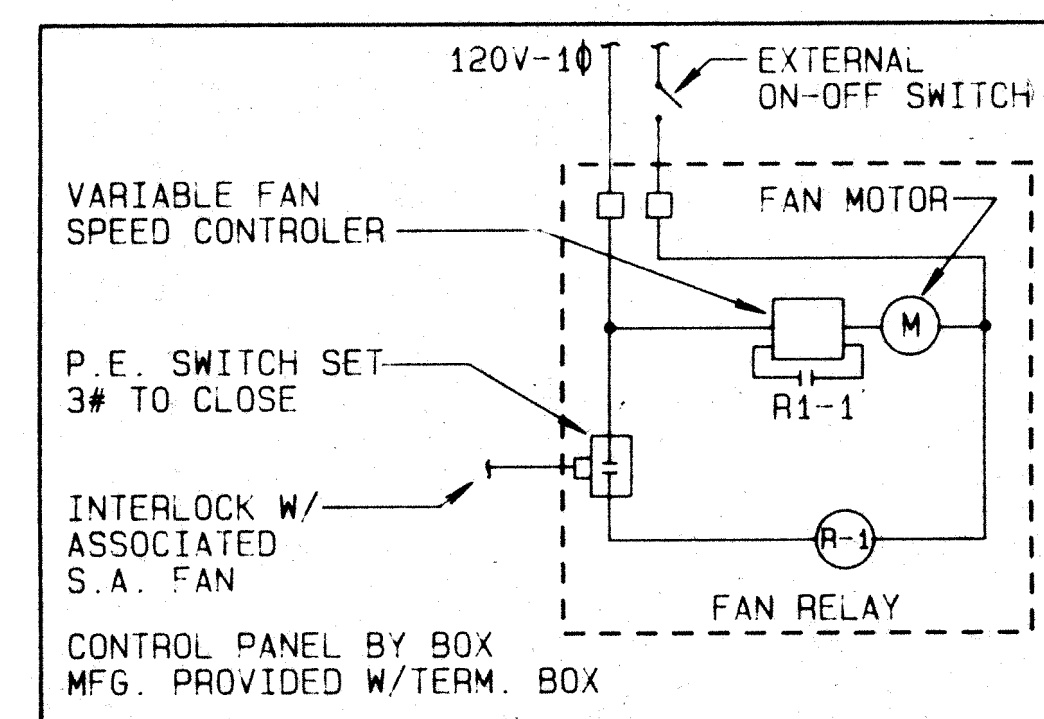
NOT TO SCALE

2

1. ALL CONTROL INTERLOCK WIRING SHALL BE PROVIDED BY CONTROLS CONTRACTOR. INSTALLATION SHALL BE IN ACCORDANCE WITH 16000 OF THE SPECIFICATIONS.
2. CONTROL PANELS SHALL BE LOCKABLE. PANELS EXPOSED TO THE WEATHER SHALL BE NEMA 4, WEATHER TIGHT.
3. CONTROL NUMBERS ARE "HONEYWELL" FOR REFERENCE ONLY.
4. AN ASTERISK (*) DENOTES CONTROL ITEMS LOCATED IN CONTROL PANELS. SEE DRAWINGS FOR LOCATIONS.
5. PROVIDE SWITCHED MAIN AIR TO ALL MIN. POSITIONS SWITCHES.

TEMPERATURE CONTROL NOTES

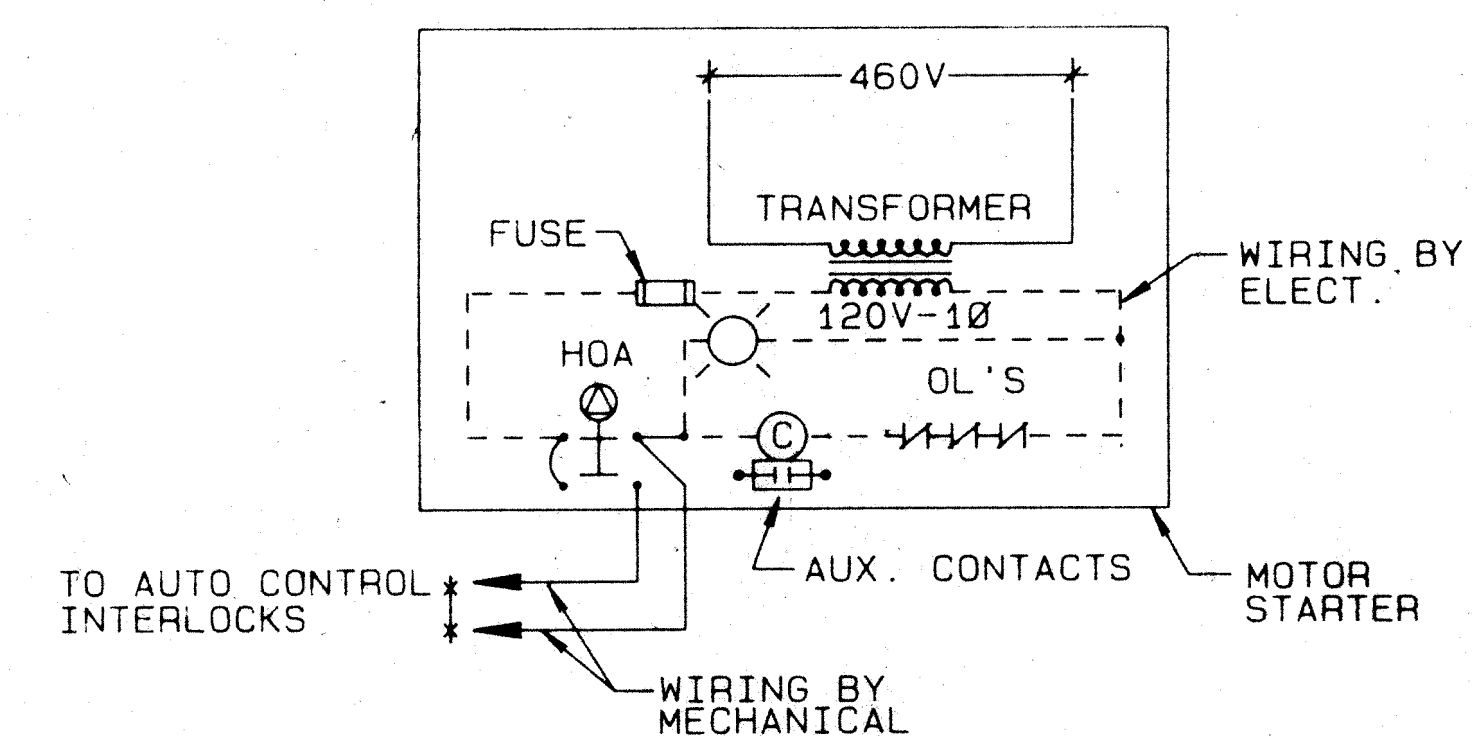
9



PANEL WIRING DIAGRAM

NOT TO SCALE

6

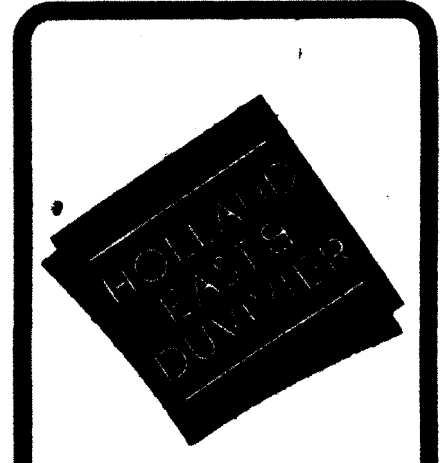


TYP. 3Ø MOTOR CONTROL

NOT TO SCALE

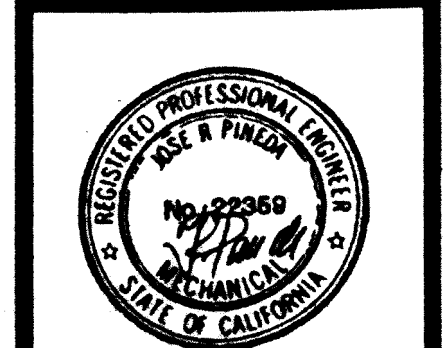
3

REVISIONS	BY
10-24-90	JL
11-18-95	JL



Robert Earl & Company, Inc.
400 South Bascom Avenue
San Jose, California 95128
Tel: 415-981-1200

PRACTICON ASSOCIATES
CONSULTING ENGINEERS
801 E. CHARLESTON ROAD
PALO ALTO, CA 94303
(415) 494-9371

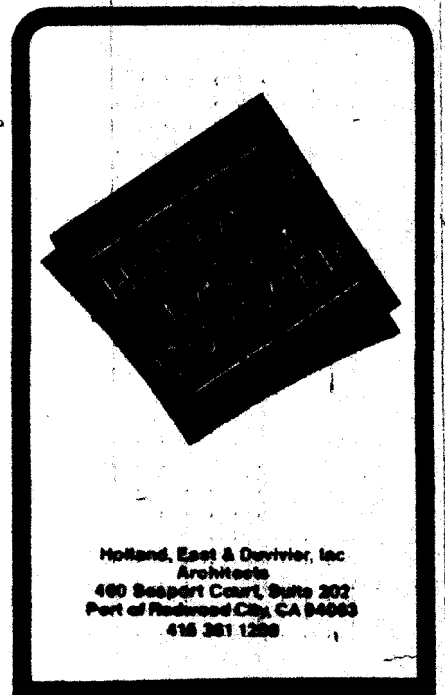


Civic Center Improvements
CITY OF CUPERTINO
Cupertino, California

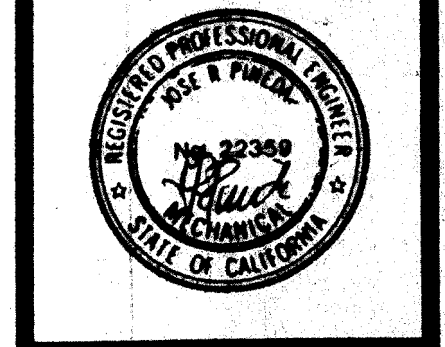
CONTROL DIAGRAMS

DRAWN
CHECKED
DATE 10-10-90
SCALE NONE
JOB NO.
SHEET
M5.1
OF SHEETS

REVISIONS	BY
10-25-86	Y
11-18-86	Y
12-18-86	Y



PRACTICE ASSOCIATES
CONSULTING ENGINEERS
801 E. CHARLESTON ROAD
PALO ALTO, CA. 94303
(415) 494-9371



Civic Center Improvements
CITY OF CUPERTINO
Cupertino, California

CONTROL DIAGRAMS

DRAWN	4
CHECKED	
DATE	10-10-86
SCALE	NONE
JOB NO.	
SHEET	
M5.2	
OF	SHEETS

