

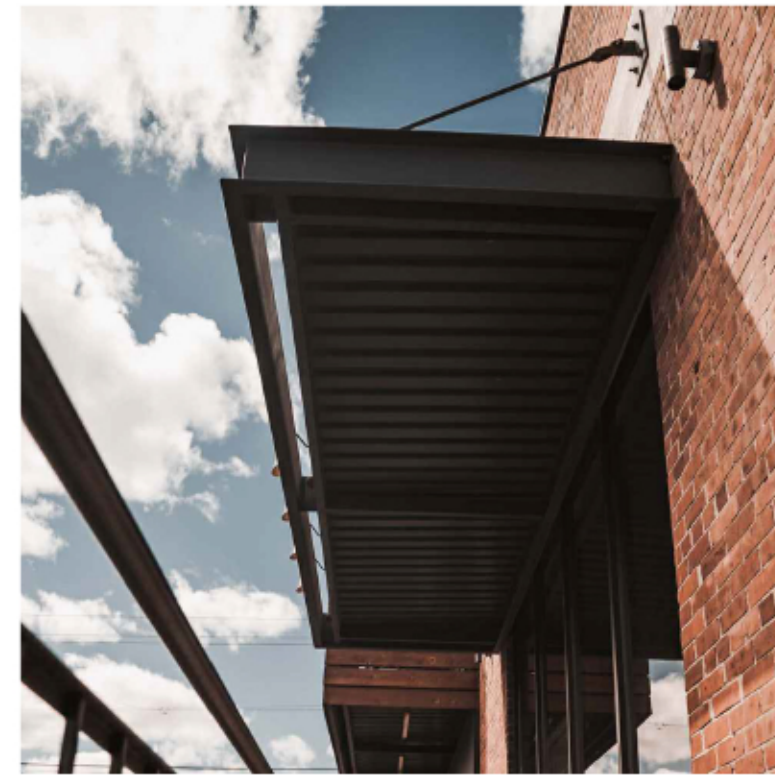
BUILDING A IMAGERY



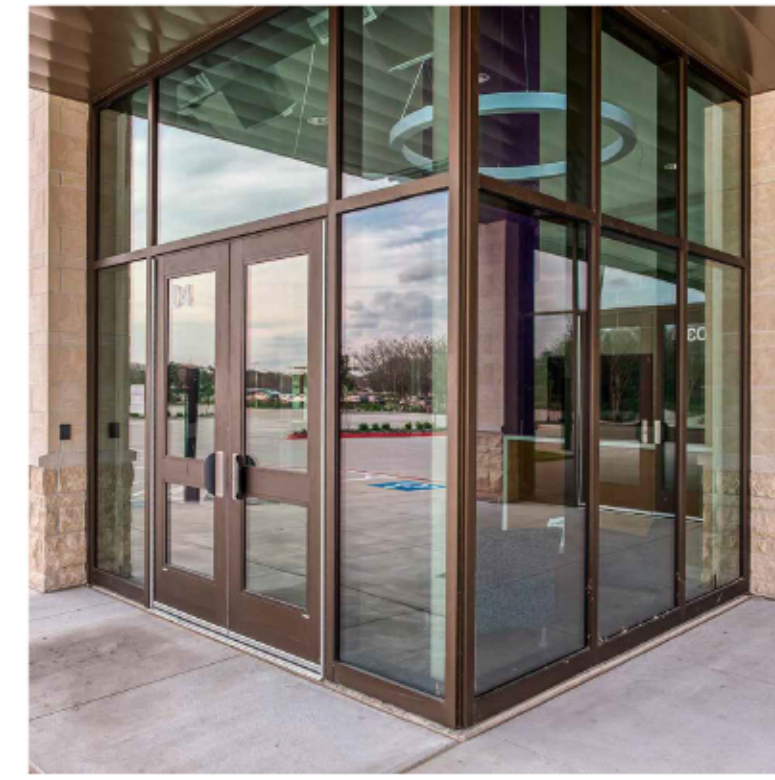
FIBER CEMENT PANEL



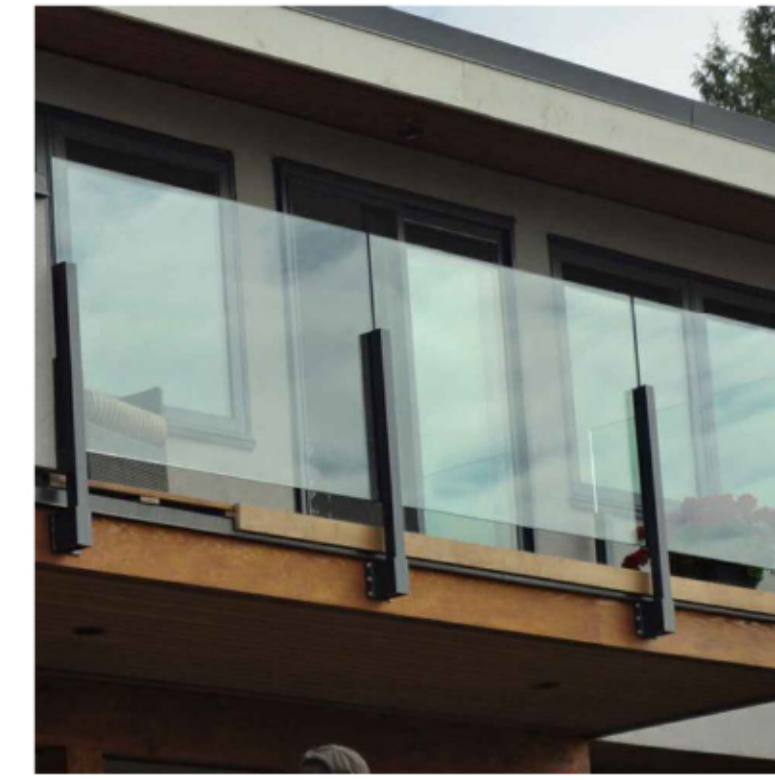
C-CHANNEL AWNING



C-CHANNEL AWNING



STOREFRONT



GLASS RAILING, W/ METAL POST



STEEL RAILINGS, W/ PERFORATED PANEL PAINTED



STONE TILE

BUILDING A ELEVATION RENDERING



DE ANZA ELEVATION



ALVES DR. ELEVATION



PASEO ELEVATION

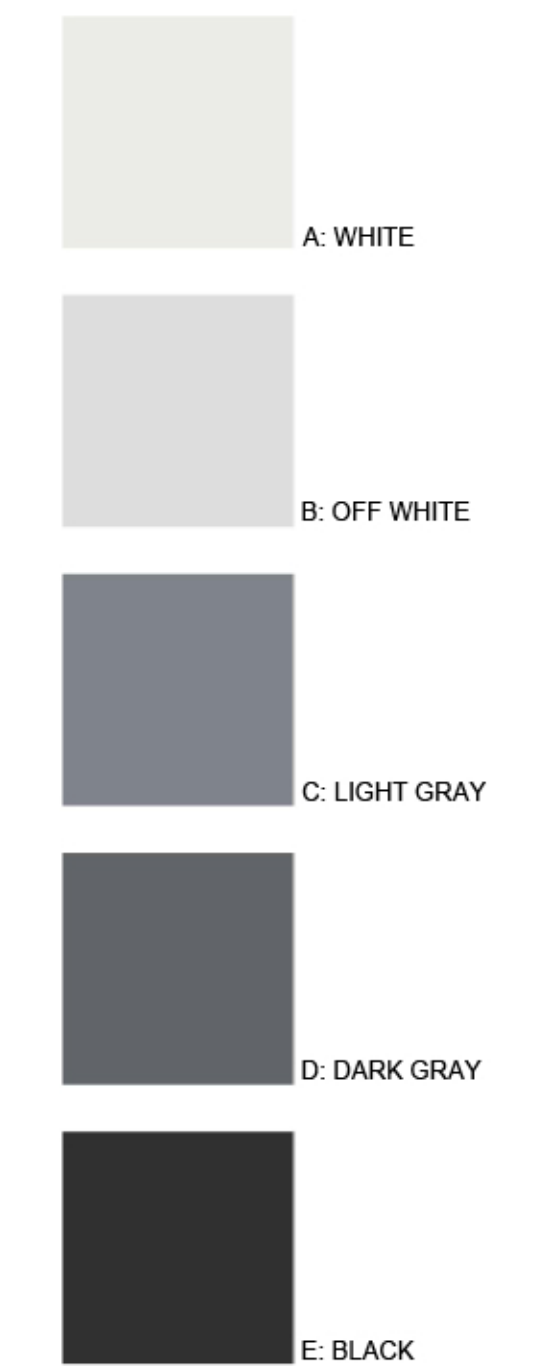


SIDE ELEVATION

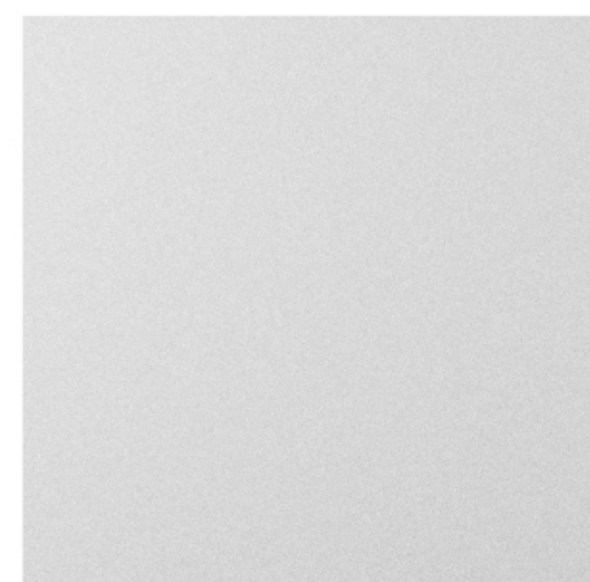
MATERIAL LIST

- 1 PAINTED STUCCO
- 2 ALUM. PANEL
- 3 FIBER CEMENT PANEL
- 4 METAL FRAME C-CHANNEL AWNING
- 5 VINYL WINDOW
- 6 ANODIZED ALUM. STOREFRONT
- 7 STEEL RAILINGS
- 8 STONE TILE
- 9 EXPOSED CONCRETE

PAINT COLOR



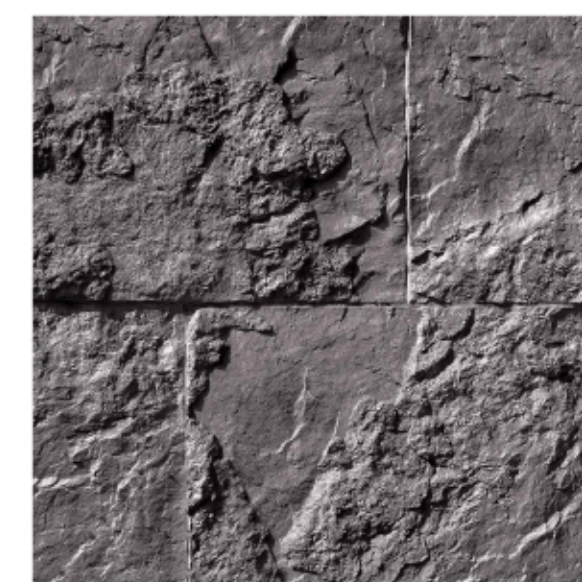
BUILDING A MATERIAL SAMPLE



F. ALUM. PANEL, SILVER METALLIC



G. FIBER CEMENT SIDING, REDWOOD



H. STONE TILE, BLACK FOREST



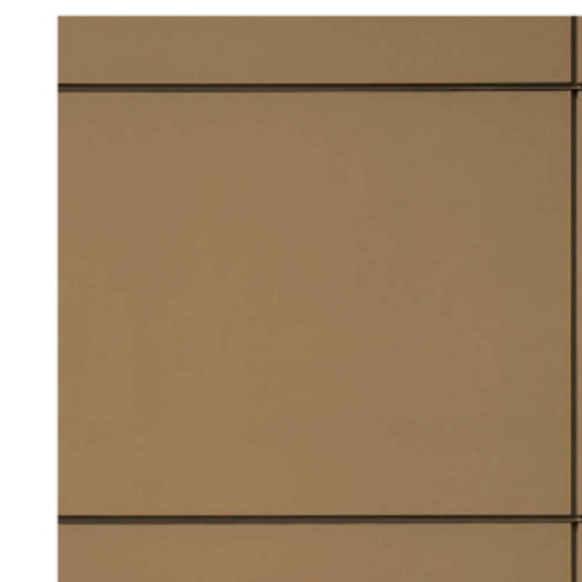
I. STONE TILE, CREAM



J. SATUARY BRONZE



K. EXPOSED CONCRETE



L. ALUMINUM REVEAL

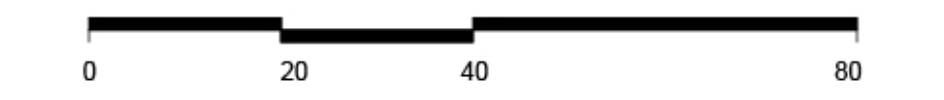


STUCCO

MARINA PLAZA

10145 DE ANZA BLVD. AND 10122 BANDLEY DR. CUPERTINO, CALIFORNIA
De Anza Venture, LLC

BUILDING A COLOR AND MATERIAL SAMPLE
SCALE: 1/16" = 1'

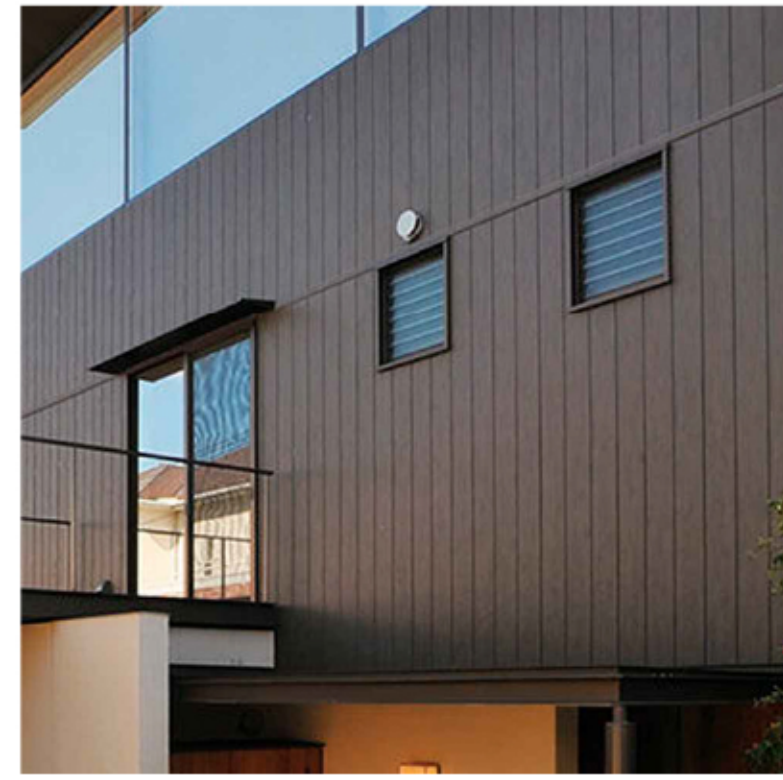


JOB NO. _____
DATE 9-27-22
Tectonic Architects & Associates
10118 Bandley Dr. #E
Cupertino, CA 95014
408-216-0804



A5.3A

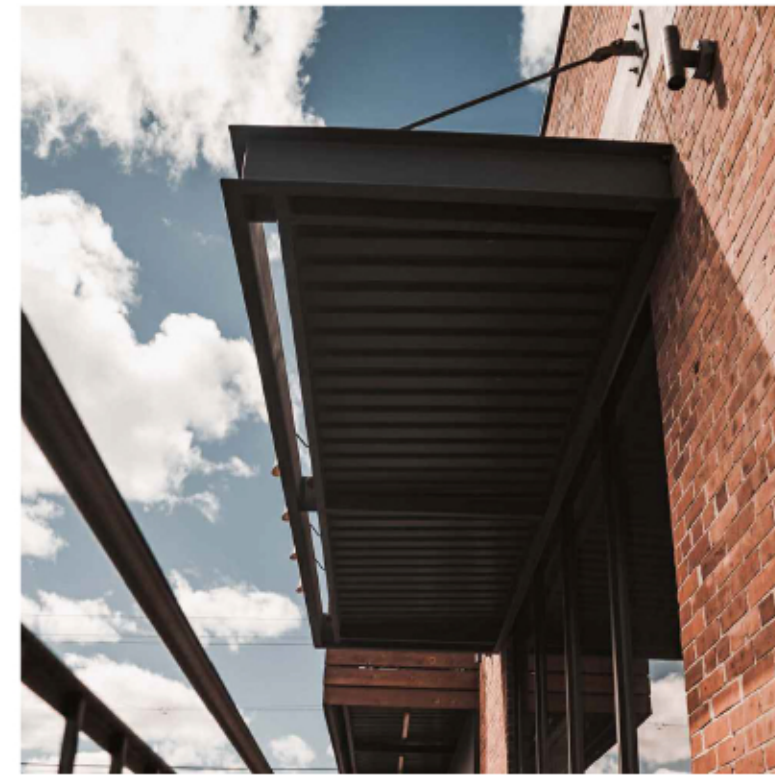
BUILDING B IMAGERY



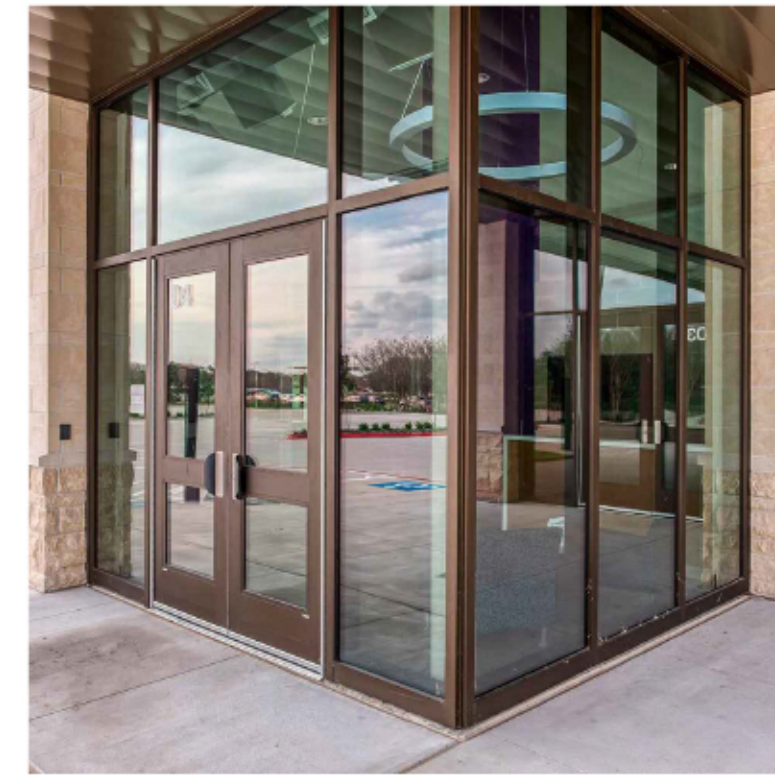
FIBER CEMENT PANEL



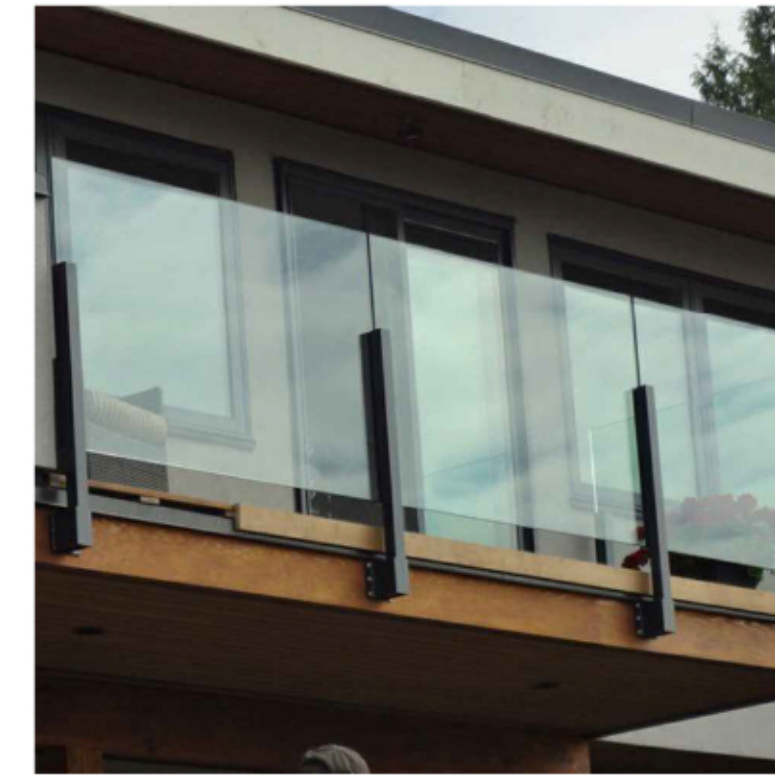
C-CHANNEL AWNING



C-CHANNEL AWNING



STOREFRONT



GLASS RAILING, W/ METAL POST



STEEL RAILINGS, W/ PERFORATED PANEL PAINTED



STONE TILE

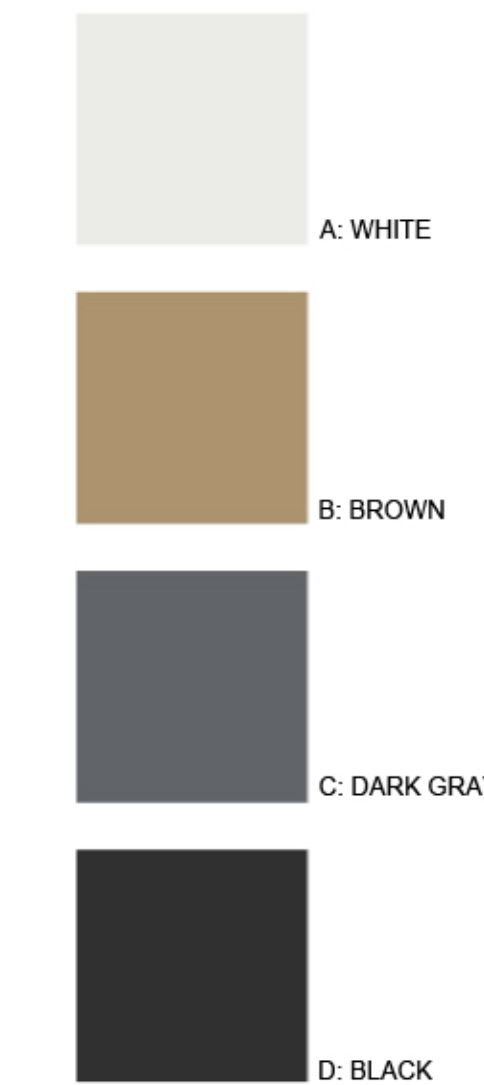
BUILDING B ELEVATION RENDERING



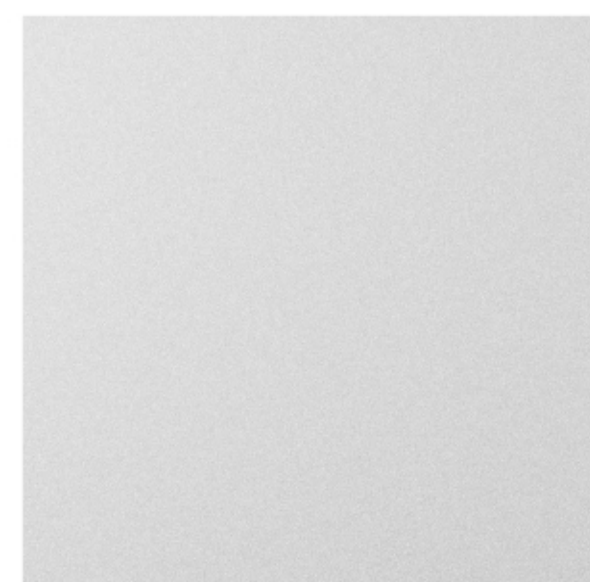
MATERIAL LIST

- 1 PAINTED STUCCO
- 2 ALUM. PANEL
- 3 FIBER CEMENT PANEL
- 4 METAL FRAME C-CHANNEL AWNING
- 5 VINYL WINDOW
- 6 ANODIZED ALUM. STOREFRONT
- 7 STEEL RAILINGS
- 8 STONE TILE
- 9 EXPOSED CONCRETE

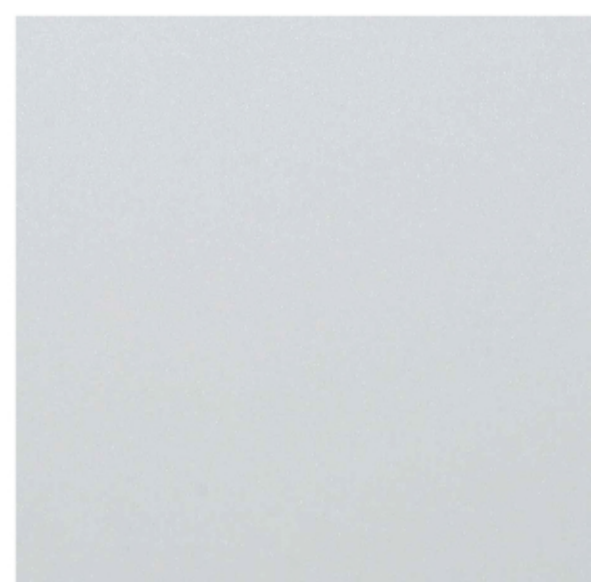
PAINT COLOR



BUILDING B MATERIAL SAMPLE



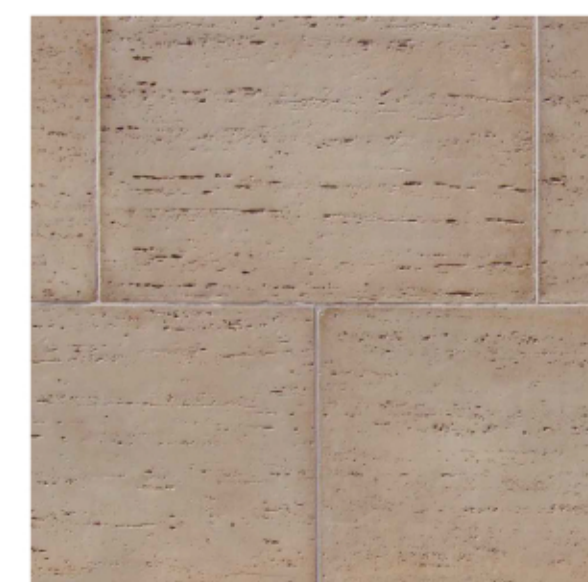
E. ALUM. PANEL, SILVER METALLIC



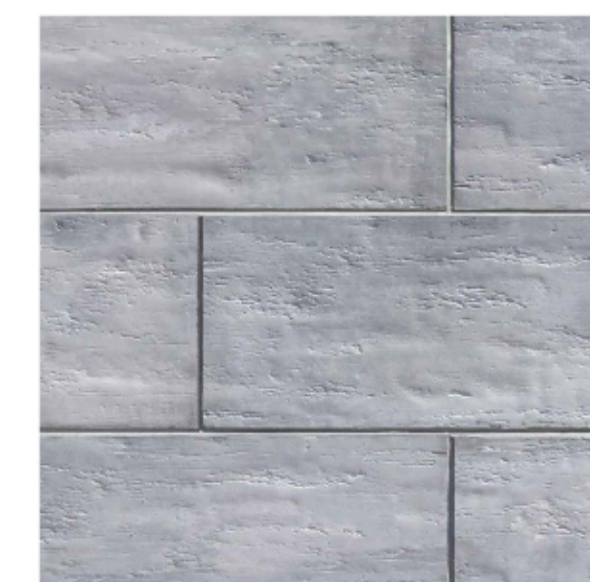
F. ALUM. PANEL, PEARL WHITE



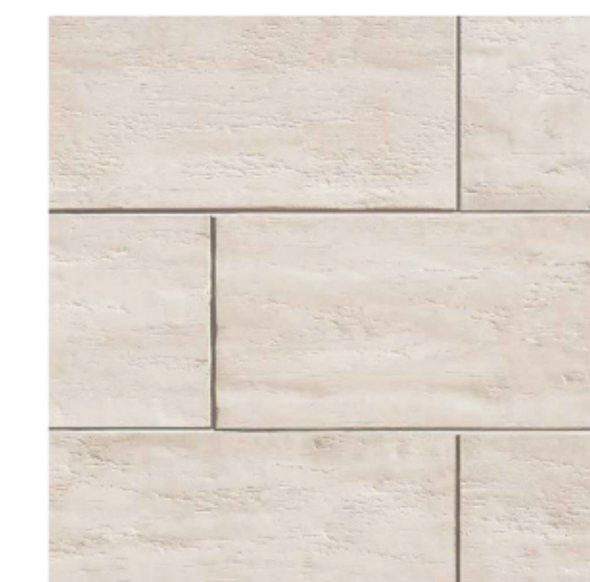
G. FIBER CEMENT SIDING, BARK



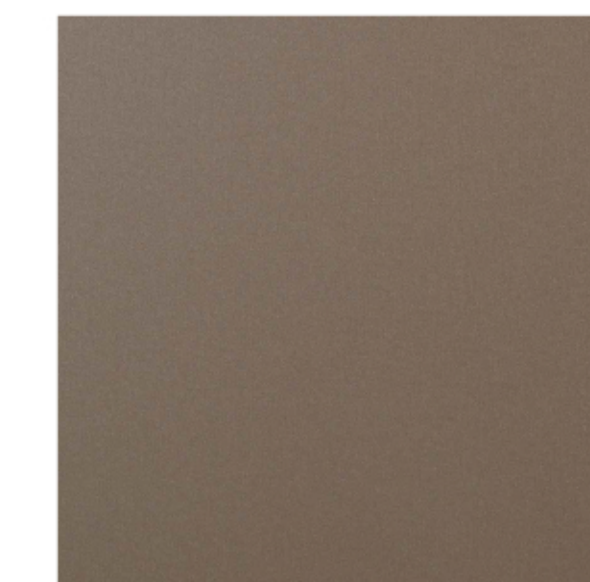
H. STONE TILE, ROMAN



I. STONE TILE, BLUE HERON



J. STONE TILE, CREAM



K. SATUARY BRONZE



L. EXPOSED CONCRETE

BUILDING B COLOR AND MATERIAL SAMPLE
SCALE: 1/16" = 1'



JOB NO. _____
DATE 9-27-22
Tectonic Architects & Associates
10118 Bandley Dr. #E
Cupertino, CA 95014
408-216-0804

MARINA PLAZA

10145 DE ANZA BLVD. AND 10122 BANDLEY DR. CUPERTINO, CALIFORNIA
De Anza Venture, LLC



A5.3B