

# Arrival Court View



# View looking south



# View looking north



# Hotel Arrival/Porte Cochère



# Restaurant Entrance



# Roof Terrace



# Roof terrace looking southwest



# Roof terrace view northwest





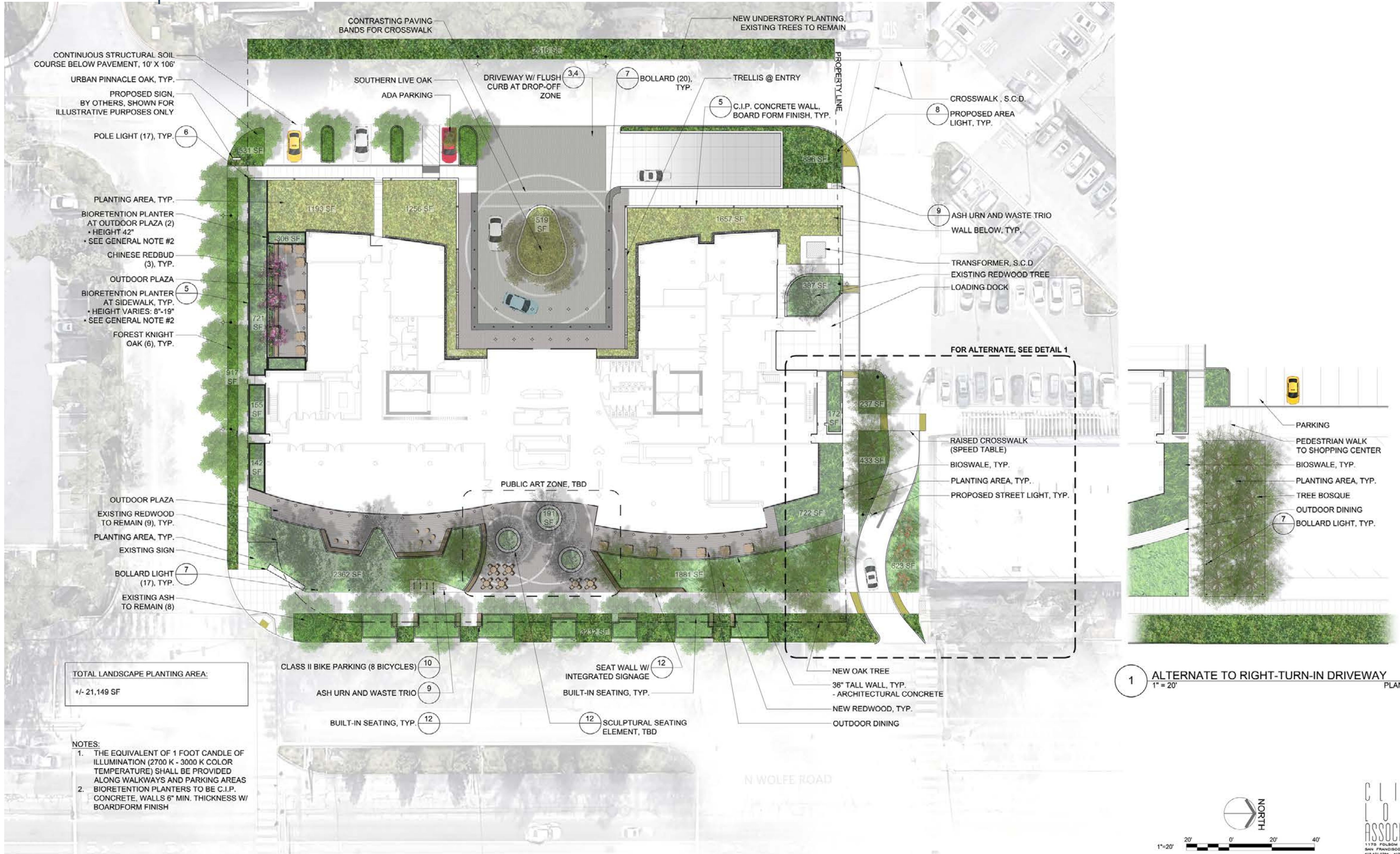
# Roof terrace view east



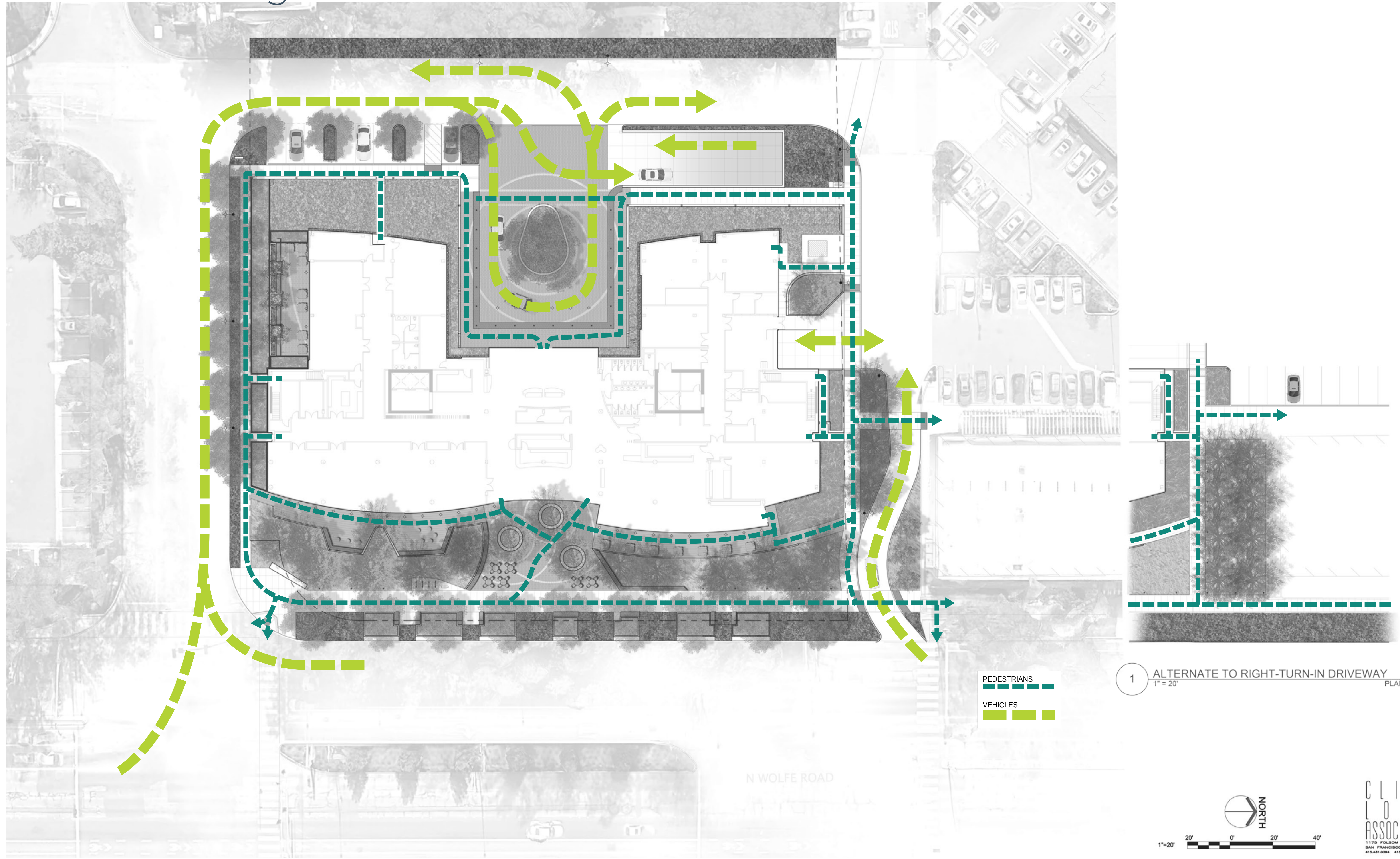
# Color/Material Board



# Landscape Plan

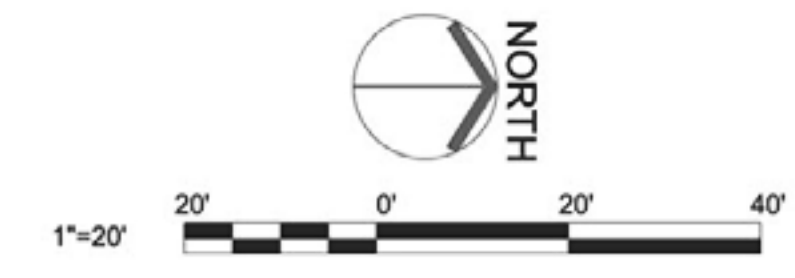


# Circulation Diagram



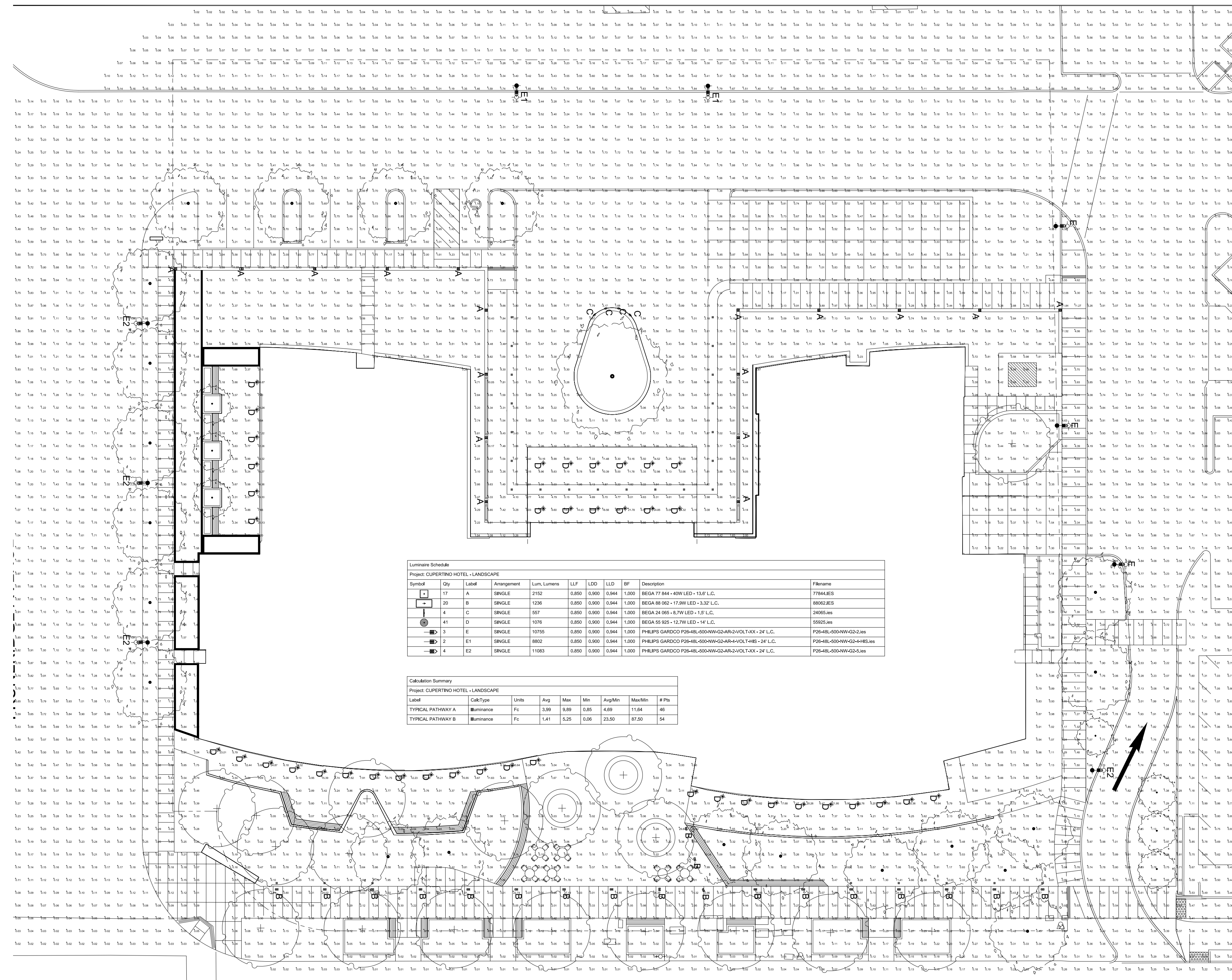
PEDESTRIANS  
 VEHICLES

1 ALTERNATE TO RIGHT-TURN-IN DRIVEWAY  
 1" = 20' PLAN



CLIFF  
 LOWE  
 ASSOCIATES  
 1175 FOLSOM STREET  
 SAN FRANCISCO CA 94103  
 415.431.0294 415.431.0295 FAX

# Photometric Plan



**Luminaire Schedule**

Symbol	Qty	Label	Arrangement	Lum. Lumens	LLF	LDD	LED	BF	Description	Fixture
17	1	A	SINGLE	2100	0.80	0.90	0.84	1.00	BEGA 17 844 - 42W LED - 13.8' L.C.	17844LES
20	5	B	SINGLE	1226	0.80	0.90	0.84	1.00	BEGA 88 882 - 17.5W LED - 3.32' L.C.	8882LES
4	4	C	SINGLE	557	0.80	0.90	0.84	1.00	BEGA 24 085 - 8.7W LED - 1.5' L.C.	24085LES
41	1	D	SINGLE	1076	0.80	0.90	0.84	1.00	BEGA 55 925 - 12.7W LED - 1.4' L.C.	55925LES
3	1	E	SINGLE	10755	0.80	0.90	0.84	1.00	PHILIPS GARDCO P08-48L-600-9W-G24-R-24V-L.C.	P08-48L-600-9W-G24-R
2	1	F1	SINGLE	8627	0.80	0.90	0.84	1.00	PHILIPS GARDCO P08-48L-600-9W-G24-R-24V-L.C.	P08-48L-600-9W-G24-R
1	1	F2	SINGLE	11083	0.80	0.90	0.84	1.00	PHILIPS GARDCO P08-48L-600-9W-G24-R-24V-L.C.	P08-48L-600-9W-G24-R

**Calculation Summary**

Level	Calc Type	Units	Avg	Max	Min	Avg/Min	Max/Min	#Ft
TYPICAL PATHWAY A	Bummanco	Fc	3.99	9.89	0.85	4.59	11.84	46
TYPICAL PATHWAY B	Bummanco	Fc	1.41	0.25	0.06	23.00	87.50	54

\*\*\*LIGHTING LAYOUT VERIFICATION\*\*\*

**AR** ASSOCIATED LIGHTING REPRESENTATIVES, INC.  
 777 PARDEE LANE  
 P.O. BOX 286  
 OAKLAND, CA 94621  
 PHONE: (916) 638-9800 - FAX: (916) 638-2808

ALL VALUES SHOWN ARE MAINTAINED HORIZONTAL FOOTCANDLES AT GRADE

PHOTOMETRIC DATA USED AS INPUT FOR THESE CALCULATIONS IS BASED ON ESTABLISHED PROCEDURES AND PUBLISHED LAMP RATINGS. FIELD PERFORMANCE WILL DEPEND ON ACTUAL LAMP BALLAST, ELECTRICAL AND SITE CHARACTERISTICS.

Calculations have been performed according to the standards and good practice. Some differences between measured values and calculated results may occur due to variations in calculation methods, lighting procedures, component performance, measurement techniques and field conditions such as voltage and temperature variations. Input data used to generate the attached calculations such as fixture dimensions, reflectance, furniture and architectural elements significantly affect the lighting calculations. If the real environment conditions do not match the input data, differences will occur between measured values and calculated values.

REPORT FOR: CLYFF LOWE ASSOCIATES  
 BY: APPLICATIONS ENGINEERING: GILBERTO J. RODRIGUEZ  
 SALES REPRESENTATIVE: AR, TRH/HANCE

AR33 VERSION 18.3  
 AR (C) 1999-2018 LIGHTING ANALYST, INC.  
 10268 W. CENTENNIAL ROAD, SUITE 203 - LITTLETON - COLORADO - 80121 - USA

**AR** ASSOCIATED LIGHTING REPRESENTATIVES  
 PROJECT: CUPERTINO HOTEL LANDSCAPE  
 CUPERTINO, CA  
 DRAWING: PHOTO PLAN  
 18339HAL-C-DWG-1A01

# Landscape Materials Board



BENCH WITH INTEGRATED SIGNAGE  
AT CAFE ENTRY PLAZA



SCULPTURAL SEATING W/ INTERNAL LIGHTING  
AT PUBLIC ART ZONE

12 BUILT-IN SEATING ELEMENTS, TBD  
N.T.S.



SEATING LAYOUT AT N WOLFE RD: MODEL VIEW, LOOKING SOUTH

PHOTOS, MODEL VIEW



PHILIPS PUREFORM LED  
AREA MEDIUM P26  
- FINISH TBD

8 AREA LIGHT  
N.T.S. PHOTO



5 BOARD FORM FINISH CONCRETE  
N.T.S. PHOTO



4 TRUNCATED DOMES (ON SITE)  
N.T.S. PHOTO



3 VEHICULAR PAVERS  
N.T.S. PHOTO



2 PEDESTRIAN PAVERS  
N.T.S. PHOTO



1 CONCRETE SIDEWALK  
N.T.S. PHOTO



CERCIS CHINENSIS  
CHINESE REDBUD



QUERCUS MACROCARPA 'URBAN PINNACLE'  
URBAN PINNACLE OAK



QUERCUS ENGELMANNII  
ENGELMANN OAK



QUERCUS ALBA X ROBUR 'FOREST KNIGHT'  
FOREST KNIGHT OAK



QUERCUS VIRGINIANA  
SOUTHERN LIVE OAK



SEQUOIA SEMPERVIRENS  
COAST REDWOOD



CIRCLE BIKE RACK  
BY ID METALCO  
- STAINLESS STEEL FINISH

10 BICYCLE RACK  
N.T.S. PHOTO



BEGA 77 844 LINEAR  
ELEMENT LED SQUARE  
- FINISH TBD

7 BOLLARD LIGHT  
N.T.S. PHOTO



CRYSTAL LITTER BIN WITH  
INTEGRATED CIGARETTE  
EXTINGUISHER BY MMCITÉ  
- STAINLESS STEEL FINISH

9 WASTE TRIO  
N.T.S. PHOTO



BEGA 77 844 LINEAR  
ELEMENT LED SQUARE  
- FINISH TBD

6 PEDESTRIAN POLE LIGHT  
N.T.S. PHOTO

11 TREE PALETTE  
N.T.S. PHOTO

CLIFF  
LOWE  
ASSOCIATES  
1175 FOLSOM STREET

# Planting Schedule

## PLANT LEGEND

TREE SPECIES								
SYMBOL	KEY	O.C. SPACING	SIZE	BOTANICAL NAME	COMMON NAME	WUCOLS WATER USE	CA NATIVE	NOTES
	CER CHI	SEE PLANS	36" BOX	<i>CERCIS CHINENSIS</i>	CHINESE REDBUD	MODERATE	X	
	COR CAP	SEE PLANS	36" BOX	<i>CORNUS CAPITATA</i>	EVERGREEN DOGWOOD	MODERATE		
	QUE FOR	SEE PLANS	36" BOX	<i>QUERCUS ROBUR X ALBA 'TABOR'</i>	FOREST KNIGHT OAK	MODERATE		
	QUE URB	SEE PLANS	36" BOX	<i>QUERCUS MACROCARPA 'JFS-KW3'</i>	URBAN PINNACLE OAK	MODERATE		
	QUE VIR	SEE PLANS	96" BOX	<i>QUERCUS VIRGINIANA</i>	SOUTHERN LIVE OAK	MODERATE		
	QUE ENG	SEE PLANS	36" BOX	<i>QUERCUS ENGELMANNII</i>	ENGELMANN OAK	LOW	X	
	SEQ SEM	SEE PLANS	36" BOX	<i>SEQUOIA SEMPERVIRENS</i>	COAST REDWOOD	HIGH	X	
	ARB MAR	SEE PLANS	36" BOX	<i>ARBUTUS 'MARINA' (MULTI-TRUNK)</i>	MARINA STRAWBERRY TREE	LOW		
	EX TREE	X	X	EXISTING TO REMAIN				
	REMOVE	X	X	REMOVE EXISTING				

SHRUB AND GROUND COVER SPECIES								
SYMBOL	KEY	O.C. SPACING	SIZE	BOTANICAL NAME	COMMON NAME	WUCOLS WATER USE	CA NATIVE	NOTES
	ARC EDM	3'	5 GAL	<i>ARCTOSTAPHYLOS EDMUNDSII 'CARMEL SUR'</i>	CARMEL SUR MANZANITA	LOW	X	FRONTAGE
	BAC PIL	5'	5 GAL	<i>BACCHARIS PILULARIS 'PIGEON POINT'</i>	DWARF COYOTE BUSH	LOW	X	FRONTAGE
	ART CAL	2'	5 GAL	<i>ARTEMISIA CALIFORNICA 'MONTARA'</i>	MONTARA SAGEBRUSH	LOW	X	FRONTAGE
	CAR CAL	5'	5 GAL	<i>CARPENTERIA CALIFORNICA</i>	BUSH ANEMONE	MODERATE	X	ENTRY SEQUENCE
	CEA YAN	4'	5 GAL	<i>CEANOTHUS 'YANKEE POINT'</i>	YANKEE POINT CEANOTHUS	LOW	X	FRONTAGE
	CEA DAR	8'	5 GAL	<i>CEANOTHUS 'DARK STAR'</i>	DARK STAR CEANOTHUS	LOW	X	ENTRY SEQUENCE

	COR PUL	2'-6"	5 GAL	<i>CORREA PULCHELLA 'DUSTY BELLS'</i>	PINK AUSTRALIAN FUCHSIA	LOW	X	FRONTAGE
	DIP AUR	2'	1 GAL	<i>MIMULUS CARDINALIS</i>	SCARLET MONKEY FLOWER	VERY LOW	X	BIOSWALE
	ERI NEV	3'	5 GAL	<i>ERIOPHYLLUM NEVINII 'CANYON SILVER'</i>	WOOLY SUNFLOWER	LOW	X	ENTRY SEQUENCE
	FRA CAL	6'	5 GAL	<i>FRANGULA CALIFORNICA 'EVE CASE'</i>	COFFEEBERRY	LOW	X	REDWOOD UNDER-STORY
	LOR CHI	3'	5 GAL	<i>LOROPETALUM CHINENSE 'SIZZLING PINK'</i>	FRINGE FLOWER	LOW		ENTRY SEQUENCE
	MAH AQU	3'	5 GAL	<i>MAHONIA AQUIFOLIUM</i>	OREGON GRAPE	MODERATE	X	REDWOOD UNDER-STORY
	SAL API	3'	5 GAL	<i>SALVIA APIANA</i>	CALIFORNIA WHITE SAGE	VERY LOW	X	BIOSWALE

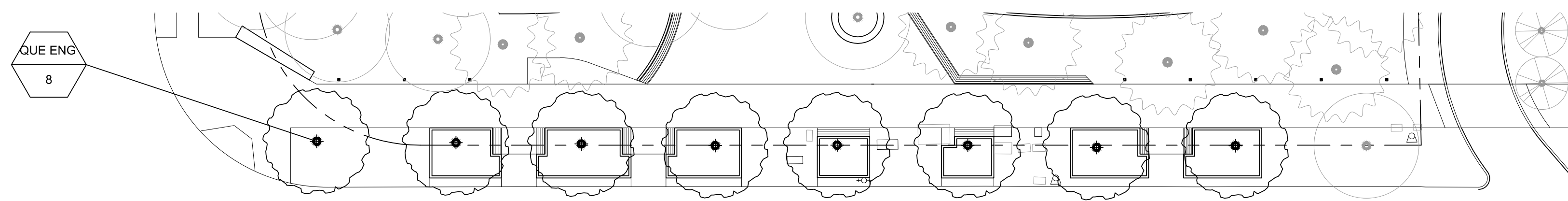
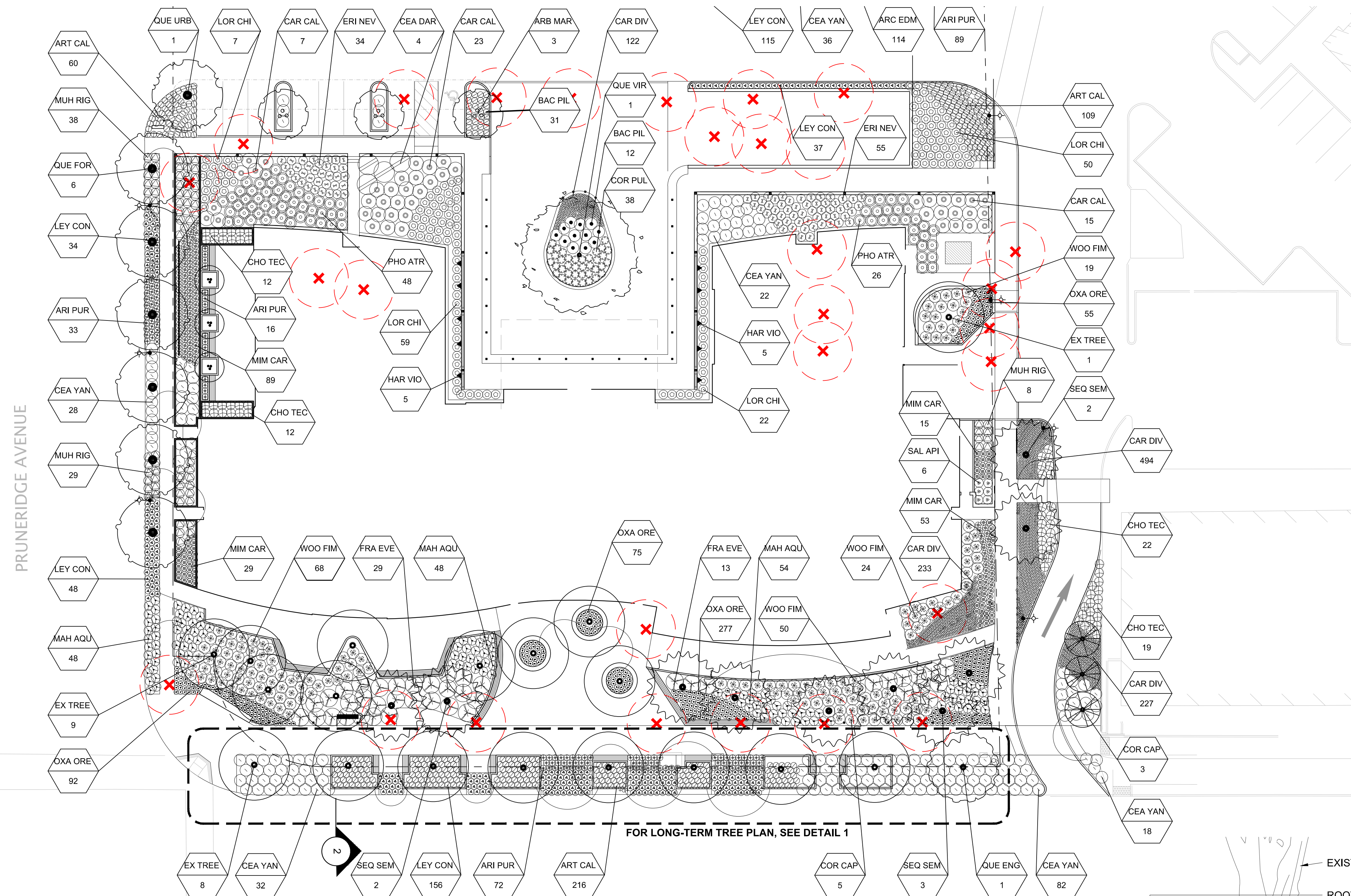
PERENNIALS AND GRASSES								
SYMBOL	KEY	O.C. SPACING	SIZE	BOTANICAL NAME	COMMON NAME	WUCOLS WATER USE	CA NATIVE	NOTES
	ARI PUR	2'	5 GAL	<i>ARISTIDA PURPUREA</i>	PURPLE THREE-AWN	LOW	X	FRONTAGE
	CAR DIV	12"	5 GAL	<i>CAREX DIVULSA</i>	EUROPEAN GREY SEDGE/BERKELEY SEDGE	MODERATE	X	BIOSWALE
	CHO TEC	2'-6"	5 GAL	<i>CHONDROPETALUM TECTORUM</i>	SMALL CAPE RUSH	LOW	X	BIOSWALE
	LEY CON	2'	5 GAL	<i>LEYMUS CONDENSATUS</i>	GIANT WILD RYE	LOW	X	FRONTAGE
	MUH RIG	3'	5 GAL	<i>MUHLENBERGIA RIGENS</i>	DEER GRASS	LOW	X	BIOSWALE
	OXA ORE	18"	5 GAL	<i>OXALIS OREGANA</i>	REDWOOD SORREL	MODERATE	X	REDWOOD UNDER-STORY
	PHO ATR	4'	5 GAL	<i>PHORMIUM 'ATROPURPUREUM COMPACTUM'</i>	FLAX	LOW	X	ENTRY SEQUENCE
	WOO FIM	4'	5 GAL	<i>WOODWARDIA FIMBRIATA</i>	GIANT CHAIN FERN	MODERATE	X	REDWOOD UNDER-STORY

VINES								
SYMBOL	KEY	QTY.	SIZE	BOTANICAL NAME	COMMON NAME	WUCOLS WATER USE	CA NATIVE	NOTES
	HAR VIO		15 GAL	<i>HARDENBERGIA VIOLACEA</i>	HAPPY WANDERER	MEDIUM		VINE @ TRELLIS



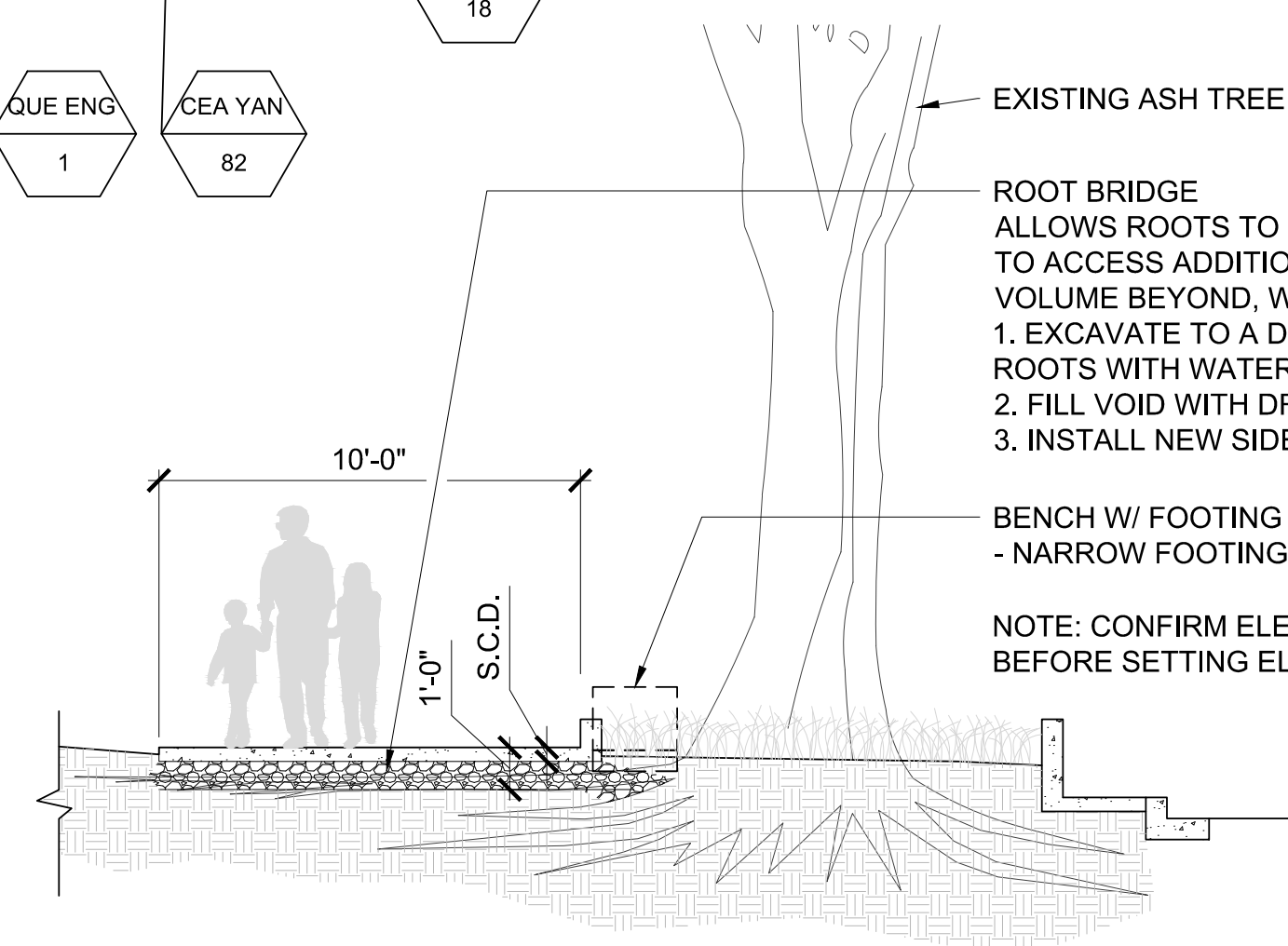
1170 POLARIS STREET  
SAN FRANCISCO, CA 94103  
415.431.0300 FAX 415.431.0300 FAX

# Planting Plan



**1 LONG-TERM STREET TREE PLAN**  
1" = 20'  
PLAN

**NOTES**  
EXISTING PUBLIC ASH TREES TO BE PRESERVED AS LONG AS THEY ARE HEALTHY AND DO NOT PRESENT A HAZARD. WHEN APPROPRIATE, THEY WILL BE REPLACED WITH ENGELMANN OAK TREES ON CASE-BY-CASE BASIS OVER TIME.



**2 ROOT BRIDGE AT SIDEWALK**  
1/4" = 1'-0"  
SECTION

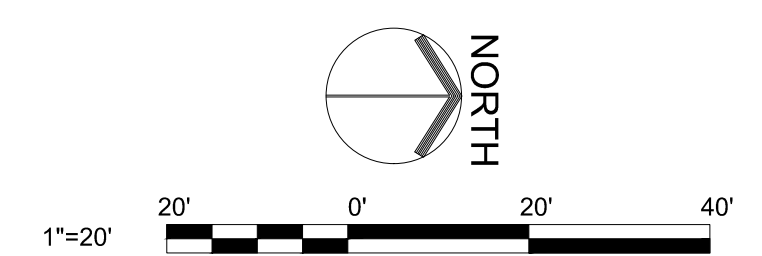
EXISTING ASH TREE

**ROOT BRIDGE**  
ALLOWS ROOTS TO GROW BENEATH SIDEWALK TO ACCESS ADDITIONAL NUTRIENTS AND SOIL VOLUME BEYOND. WHILE NOT UPHEAVING CONCRETE

- EXCAVATE TO A DEPTH OF 12" AROUND EXISTING ROOTS WITH WATER JET OR VACUUM EXCAVATOR.
- FILL VOID WITH DRAIN ROCK AROUND ROOTS.
- INSTALL NEW SIDEWALK ABOVE DRAIN ROCK

**BENCH W/ FOOTING BEYOND**  
- NARROW FOOTINGS TO AVOID MAJOR ROOTS

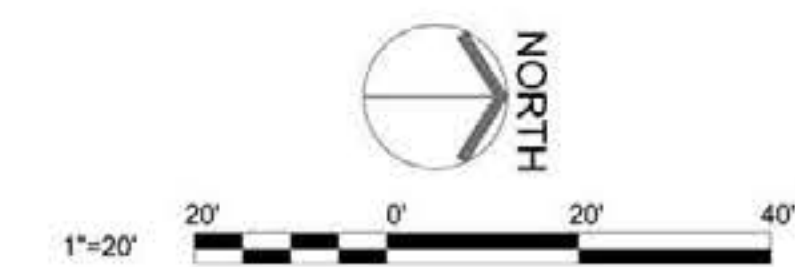
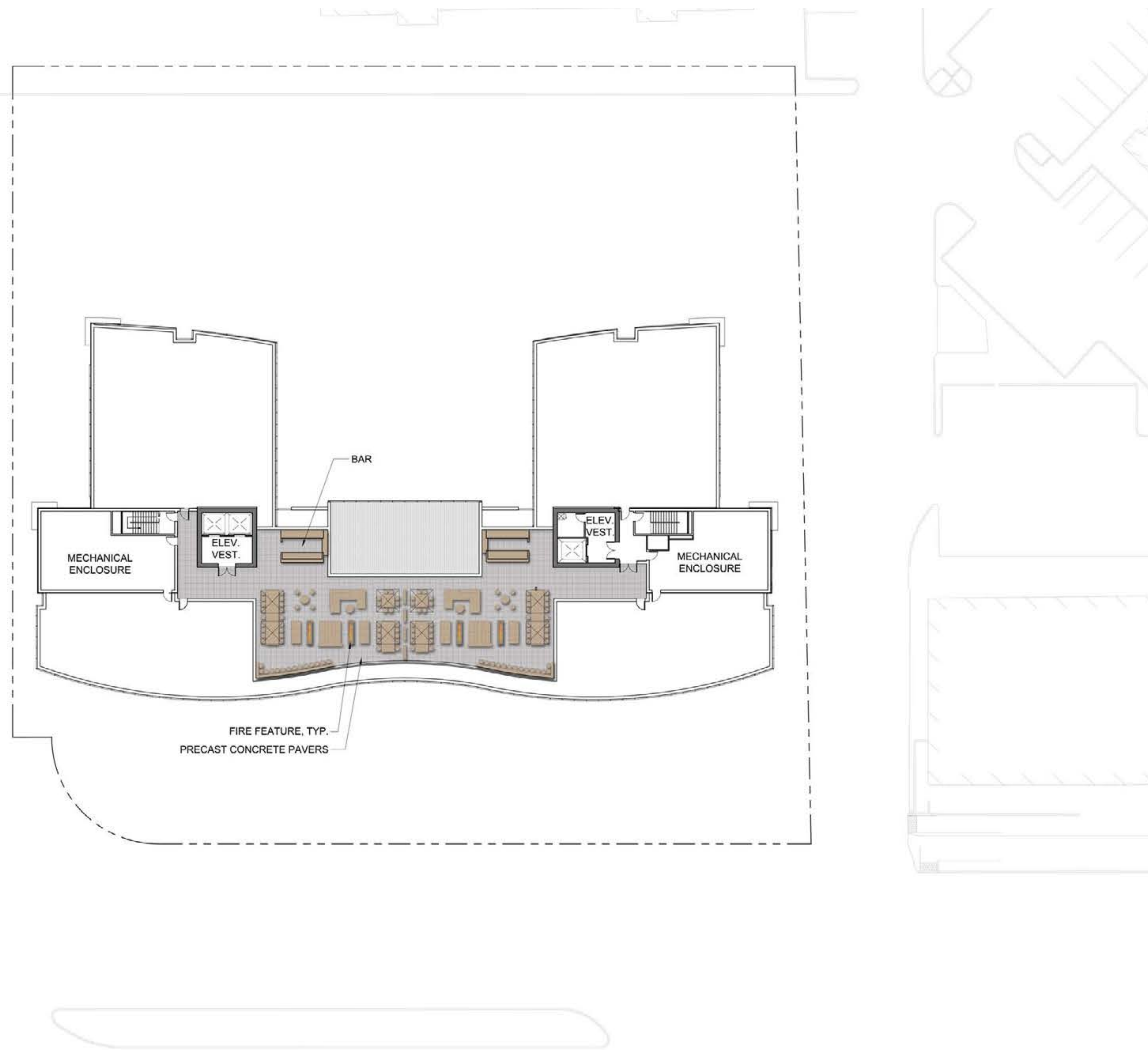
**NOTE:** CONFIRM ELEVATION OF ROOT CROWN BEFORE SETTING ELEVATION OF PROPOSED SIDEWALK



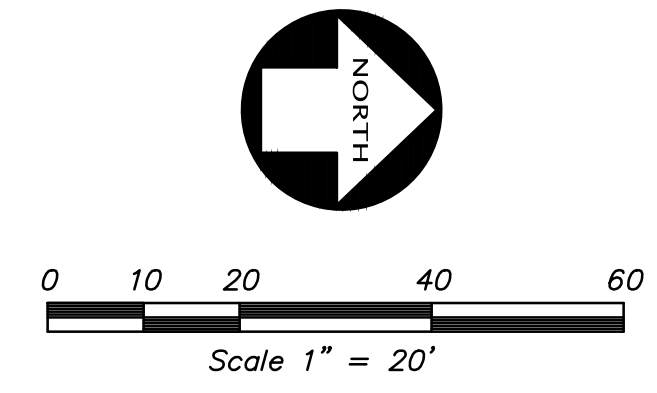
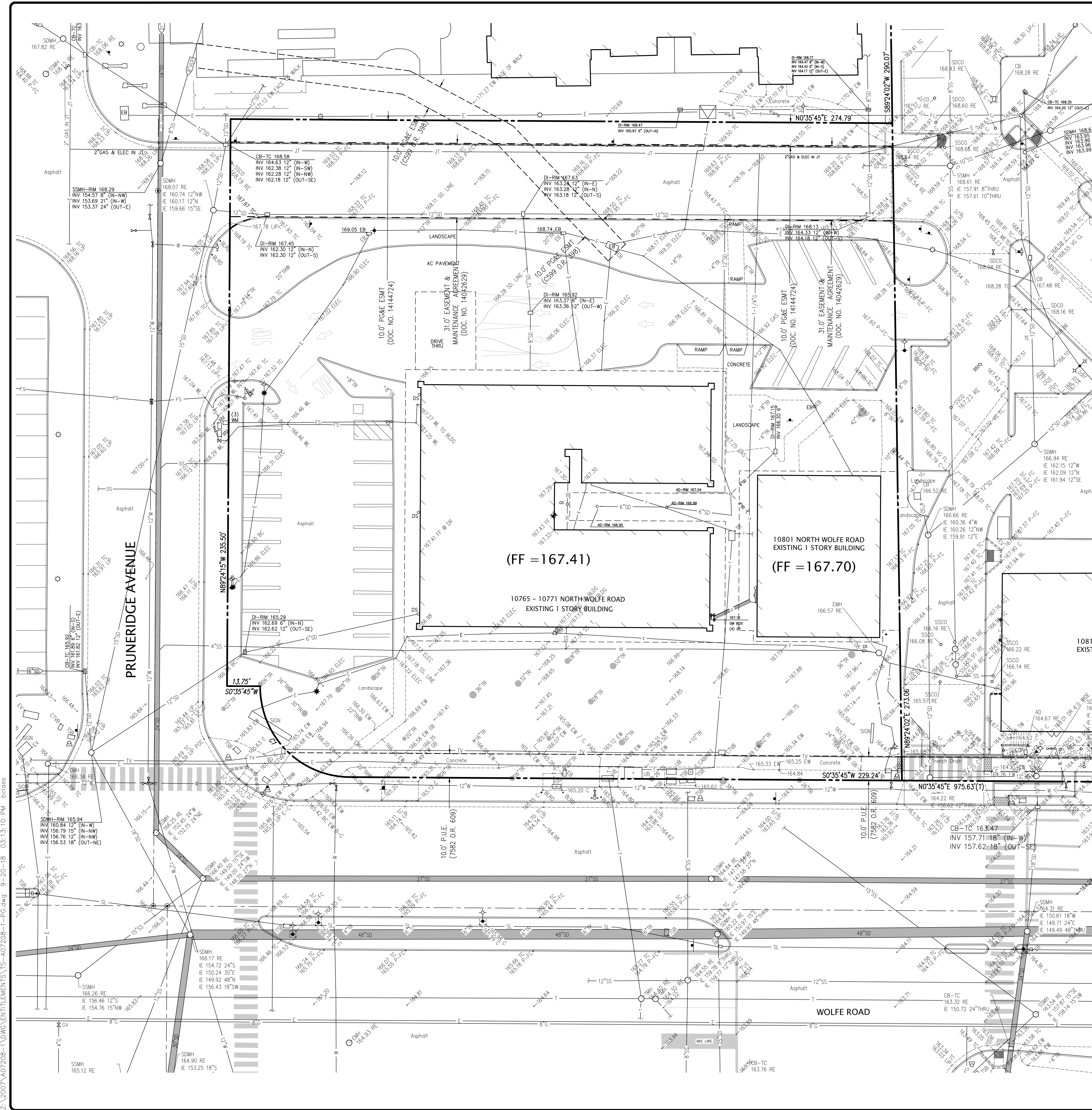
CLIFFE  
LOWE  
ASSOCIATES  
1175 FOLSOM STREET  
SAN FRANCISCO, CA 94103  
415.431.0284 415.431.0286 FAX



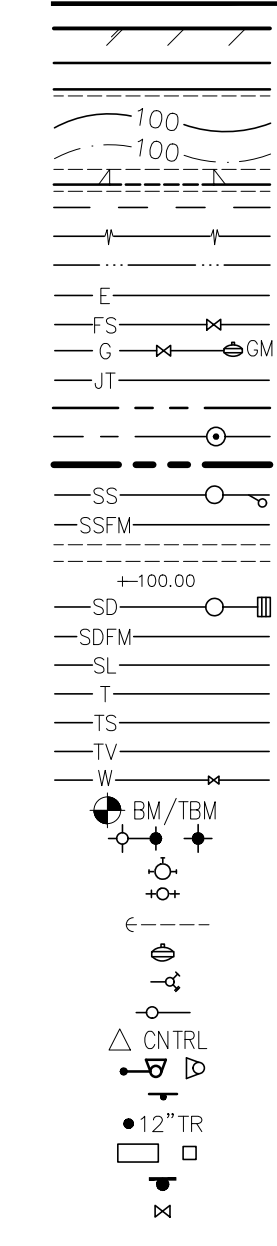
# Roof Plan



CLIFF  
LOWE  
ASSOCIATES  
1175 FOLSOM STREET  
SAN FRANCISCO, CA 94103  
415.431.0384 415.431.0384 FAX



**LEGEND**



BUILDING LINE  
 CONCRETE CURB & GUTTER  
 CONTOUR LINE  
 OBSOURED CONTOUR LINE  
 DRIVEWAY  
 EASEMENT LINE  
 EDGE OF PAVEMENT  
 EDGE OF WATER-FLOWLINE  
 ELECTRIC LINE  
 FIRE SERVICE & VALVE  
 GAS LINE-VALVE & METER  
 JOINT TRENCH  
 LOT LINE  
 MONUMENT/MONUMENT LINE  
 PROPERTY LINE  
 SANITARY SEWER-MANHOLE & CLEANOUT  
 SANITARY SEWER FORCE MAIN  
 SIDEWALK  
 SPOT ELEVATION  
 STORM DRAIN-MANHOLE & CATCH BASIN  
 STORM DRAIN FORCE MAIN  
 STREET LIGHT CONDUIT LINE  
 TELEPHONE LINE  
 TRAFFIC SIGNAL CONDUIT LINE  
 TELEVISION LINE  
 WATER LINE & VALVE  
 BENCHMARK/TEMPORARY BENCHMARK  
 ELECTROLIER  
 FIRE DEPARTMENT CONNECTION  
 FIRE HYDRANT  
 INTERSECTION  
 GAS METER  
 HOSEBIBB  
 POST INDICATOR VALVE  
 SURVEY CONTROL POINT  
 TRAFFIC SIGNAL POLE  
 TRAFFIC SIGN  
 TREE  
 UTILITY BOX  
 UTILITY LINE MARKER  
 WATER VALVE

**ABBREVIATIONS**

AC ASPHALT CONCRETE  
 AD AREA DRAIN  
 BC BACK OF CURB  
 BEG BEGIN  
 BLOC BUILDING  
 BW BACK OF WALK  
 C CONCRETE  
 CB CATCH BASIN  
 CD CENTER LINE  
 CLO CLEANOUT  
 CTV CABLE TELEVISION  
 CTVB CABLE TV BOX  
 CTVL CABLE TELEVISION LINE  
 DR DOOR  
 DS DOWN SPOUT  
 E EAST  
 EB ELECTRICAL BOX  
 ELEC ELECTRICAL LINE  
 EP EDGE OF PAVEMENT  
 EW EDGE OF WALK  
 FDC FIRE DEPARTMENT CONNECTION  
 FF FINISH FLOOR  
 FH FIRE HYDRANT  
 FS FIRE SERVICE  
 GAS GAS LINE  
 GM GAS MARKER/METER  
 GP GATE POST  
 GV GAS VALVE  
 IE INVERT ELEVATION  
 INTX INTERSECTION  
 JT JOINT TRENCH  
 MH MANHOLE  
 N NORTH  
 PIV POST INDICATOR VALVE  
 POC POINT OF CONNECTION  
 PP POWER POLE  
 RE RIM ELEVATION  
 S SOUTH  
 SD STORM DRAIN  
 SDMH STORM DRAIN MANHOLE  
 SL STREET LIGHT  
 SS SANITARY SEWER  
 SSSO SANITARY SEWER CLEAN OUT  
 SSMH SANITARY SEWER MANHOLE  
 TB TELEPHONE BOX  
 TC TOP OF CURB  
 TELE TELEPHONE LINE  
 TMH TELEPHONE MANHOLE  
 TSB TRAFFIC SIGNAL BOX  
 TSP TRAFFIC SIGNAL POLE  
 TV TELEVISION  
 W WEST  
 WL WALK LIGHT  
 WM WATER METER  
 WV WATER VALVE

GROSS AREA = 74,979 SF  
 NET AREA = 74,979 SF

CURVE TABLE			
CURVE #	RADIUS	DELTA	LENGTH
C1	37.50'	90°00'00"	58.90'

**NOTES**

- THIS SURVEY WAS PREPARED FROM INFORMATION FURNISHED IN A PRELIMINARY TITLE REPORT, PREPARED BY CHICAGO TITLE INSURANCE COMPANY, DATED NOVEMBER 8, 2007, NUMBER 07-98203233-10. NO LIABILITY IS ASSUMED FOR MATTERS OF RECORD NOT STATED IN SAID PRELIMINARY TITLE REPORT THAT MAY AFFECT THE BOUNDARY LINES, EXCEPTIONS, OR EASEMENTS AFFECTING THE PROPERTY.
- UTILITY INFORMATION HEREIN IS IN PROGRESS AT THIS TIME. A REQUEST WAS MADE TO THE RESPECTIVE AGENCIES, TO INCLUDE, ELECTRIC LINES, GAS LINES, WATER LINES, CABLE TELEVISION LINES, NITROGEN LINES, (IF ANY) FIBER OPTIC LINES (IF ANY), FOR INFORMATION REGARDING THEIR FACILITIES ON THIS SITE. AS OF 04-18-17, THEY HAVE NOT RESPONDED WITH THIS INFORMATION. UNTIL WE RECEIVE THIS INFORMATION AND WITH REGARDS TO THE LOCATION OF UTILITY FACILITIES. UPON RECEIPT OF THIS INFORMATION KIER & WRIGHT WILL UPDATE THIS SURVEY AND REVISE IT.
- BENCHMARK: U-1122 BRASS DISK IN T.C. AT NORTHWEST CORNER OF HOMESTEAD ROAD AND ROUTE 85 ON MID-POINT OF CURB RETURN NEAR CATCH BASIN. ELEVATION: 201.46
- BASIS OF BEARINGS: THE BEARING OF SOUTH 00°35'45" WEST TAKEN ON THE CENTERLINE OF WOLFE ROAD AS SHOWN ON THAT CERTAIN PARCEL MAP FILED FOR RECORD ON OCTOBER 25, 1977 IN BOOK 406 OF MAPS AT PAGE 27, SANTA CLARA COUNTY RECORDS, WAS TAKEN AS THE BASIS OF ALL BEARINGS SHOWN HEREON.
- THIS MAP WAS PREPARED USING COMPUTER ASSISTED, PHOTOGRAMMETRIC METHODS BY HW GEOSPATIAL, INC., IN OAKLAND CALIFORNIA. THE DATE OF PHOTOGRAPHY WAS NOVEMBER 2, 2008 AS JOB NUMBER 07 - 358.
- THE TOPOGRAPHY SHOWN HEREON AS AN INTERIM CONDITION. FINAL TOPOGRAPHY IS IN PROGRESS.

*Joe Pope*

05/10/17

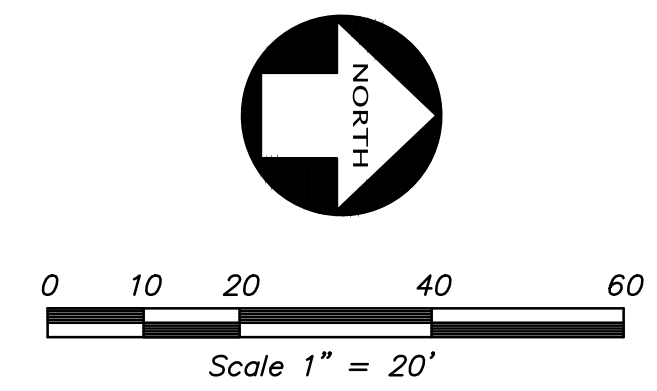
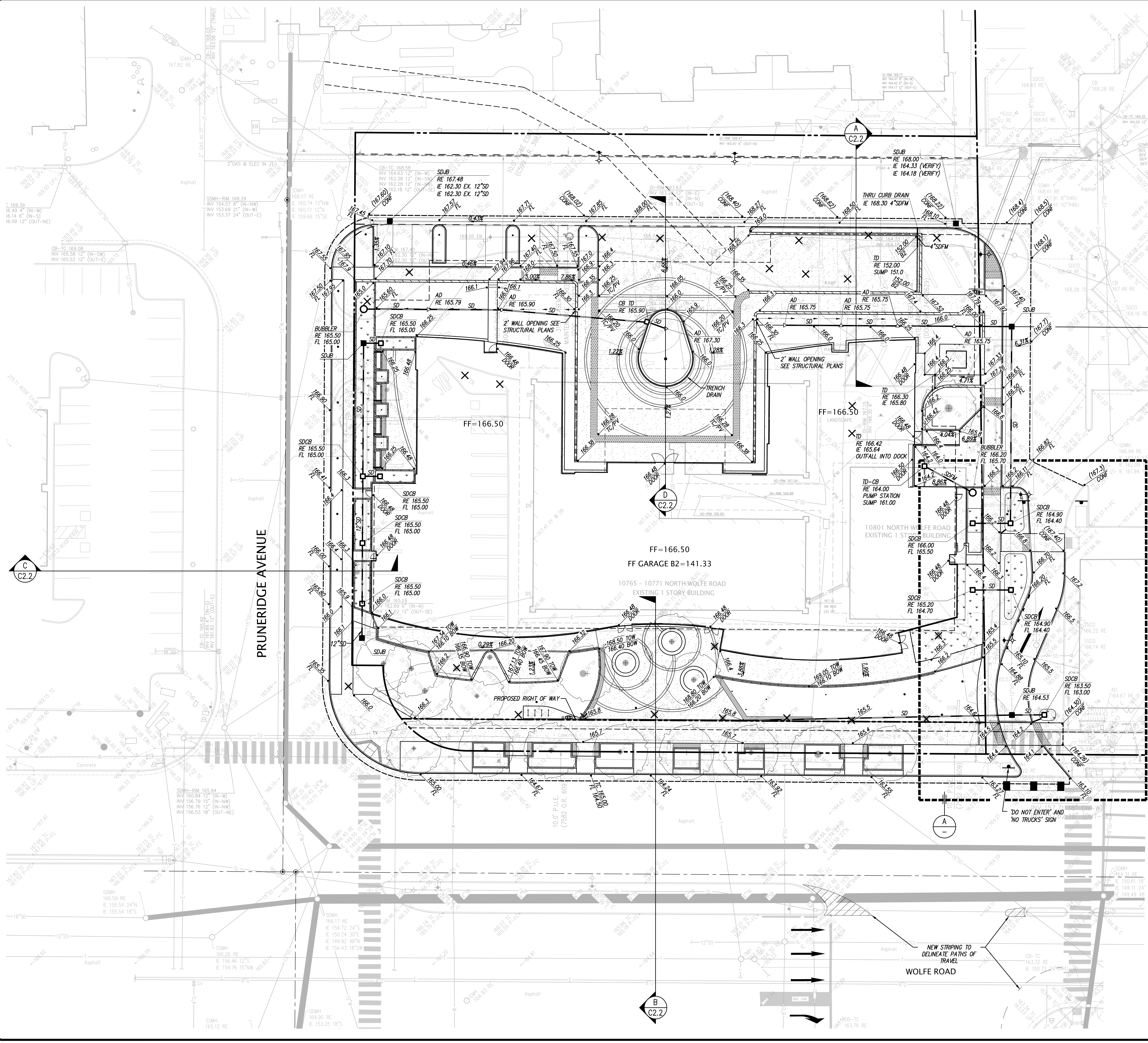
PREPARED BY OR UNDER THE SUPERVISION OF  
 JOSEPH D. THOMPSON, L.S. 8121  
 LICENSE EXPIRES: 12-31-18



DATE	May, 2017
SCALE	1" = 20'
SURVEYOR	JDT
DRAWN BY	TB
JOB NO.	A07208-1
SHEET	C1.1
OF	SHEETS

**PARTIAL TOPOGRAPHIC SURVEY  
 OF  
 CUPERTINO VILLAGE  
 FOR  
 KIMCO  
 CUPERTINO, CALIFORNIA**

**KIER & WRIGHT  
 CIVIL ENGINEERS & SURVEYORS, INC.  
 2850 Collier Canyon Road  
 Livermore, California 94551  
 Phone (925) 245-8788  
 Fax (925) 245-8796**



**LEGEND**

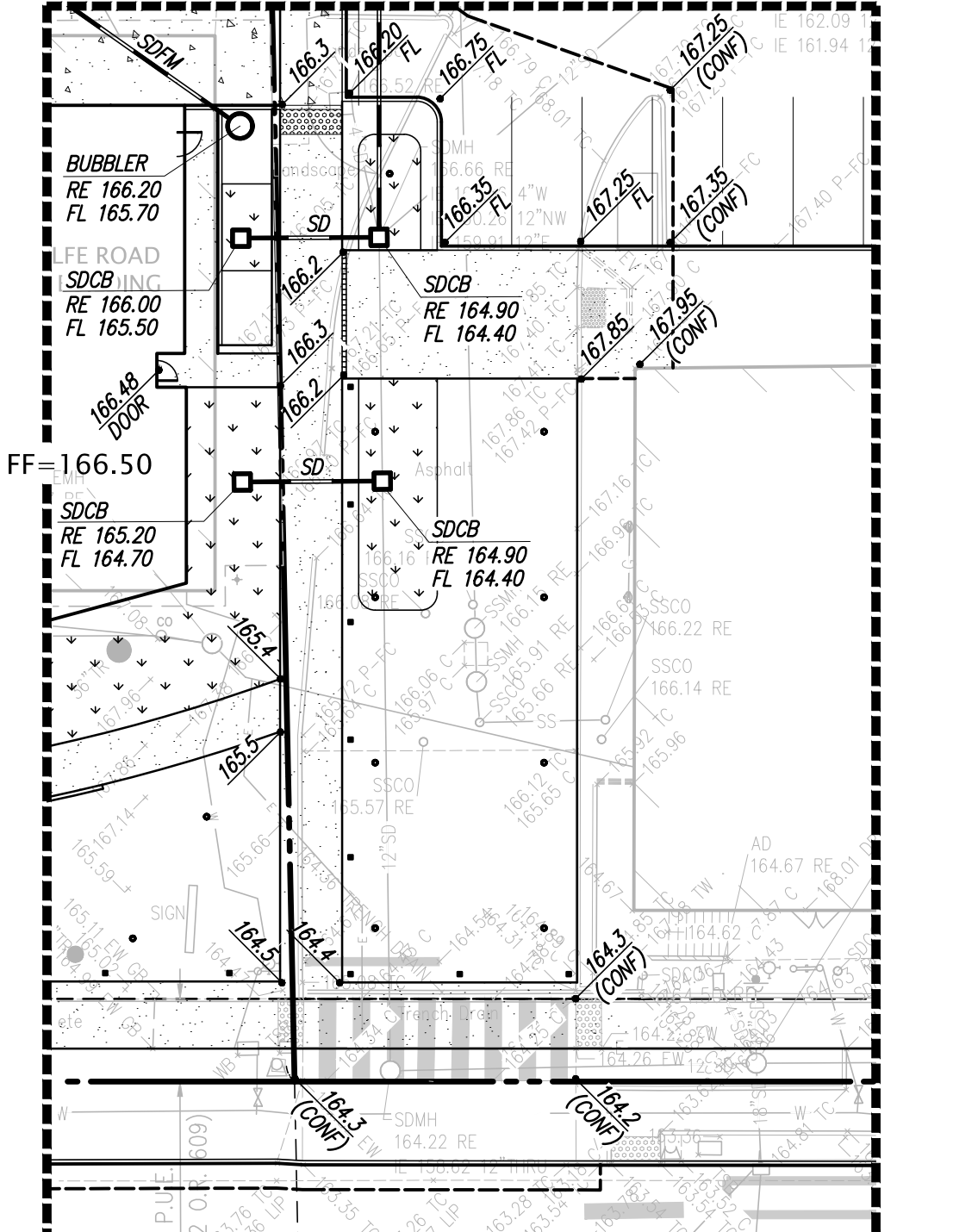
	AREA DRAIN
	STORM DRAIN CATCH BASIN
	STORM DRAIN JUNCTION BOX
	STORM DRAIN MANHOLE
AD	AREA DRAIN
FL	FLOW LINE
FF	FINISH FLOOR
PV	PAVEMENT
RE	RIM ELEVATION
SDCB	STORM DRAIN CATCH BASIN
SDJB	STORM DRAIN JUNCTION BOX
TD	TRENCH DRAIN
23.8	SPOT ELEVATION
X*SD	STORM DRAIN LINE
TC	TOP OF CURB
	CURB CUT
	TRENCH DRAIN
	WALL
	PROPERTY LINE
	LIMITS OF GARAGE
	SAWCUT LINE
	EXISTING TREE TO BE REMOVED
	SIDEWALK: 4" PCC OVER 6" CLASS II AB
	REINFORCED CONCRETE PAD PER SOILS ENGINEER FINAL RECOMMENDATIONS
	SIGN

NOTE: ALL STORM DRAIN PIPES WITHIN THE LIMITS OF THE UNDERGROUND GARAGE ARE SCHEMATIC ONLY, AND SHALL BE DESIGNED PER THE GARAGE MECHANICAL PLANS.

**EARTHWORK SUMMARY**

CUT:	44,000 CY
FILL:	400 CY

NOTE: THE EARTHWORK QUANTITIES LISTED ON THESE PLANS ARE STATED ONLY FOR CALCULATION OF GRADING AND BUILDING PERMIT FEES. THESE QUANTITIES DO NOT INCLUDE TRENCH OR FOOTING SPACES, SHANK OR SLOTTED FROM COMPACTING EFFORTS OR OTHER VARIABLES. THE ENGINEER MAKES NO REPRESENTATION THIS SITE WILL BALANCE. THE CONTRACTOR SHALL DETERMINE HIS OWN EARTHWORK QUANTITIES AND BASE HIS BID ACCORDINGLY.



OPTION 'B'

A

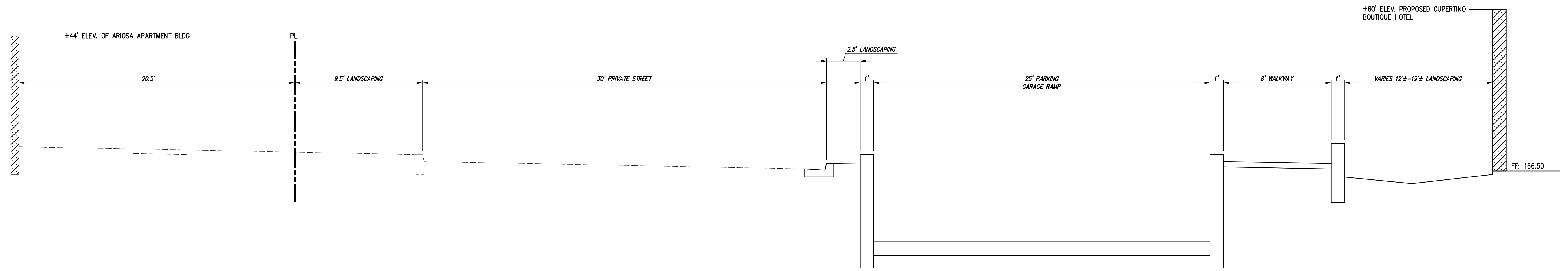
Z:\0007\A07208-1\DWG\ENTITLEMENTS\A07208-1-PC.dwg 9-20-18 03:28:54 PM bcdass

BY	REVISION	NO.	DATE

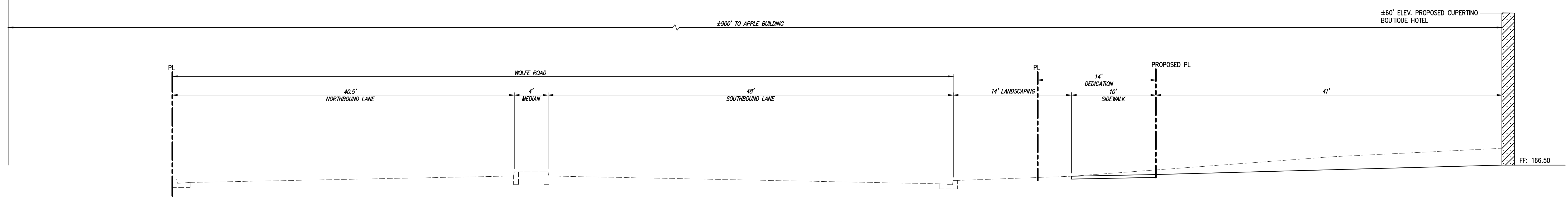
**KIER & WRIGHT**  
 CIVIL ENGINEERS & SURVEYORS, INC.  
 2850 Collier Canyon Road  
 Livermore, California 94551  
 Phone (925) 245-8788  
 Fax (925) 245-8796

REGISTERED PROFESSIONAL ENGINEER  
 No. 65838  
 CIVIL  
 STATE OF CALIFORNIA

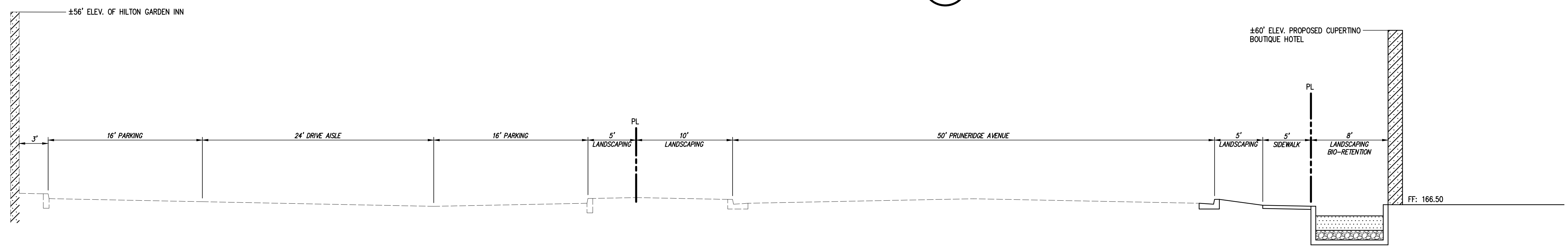
<b>PRELIMINARY GRADING PLAN OF CUPERTINO VILLAGE FOR KIMCO</b>		DATE	JAN., 2018
		SCALE	
		DESIGNER	SMC
		JOB NO.	A07208-1
		SHEET	<b>C2.1</b>
		CUPERTINO, CALIFORNIA	



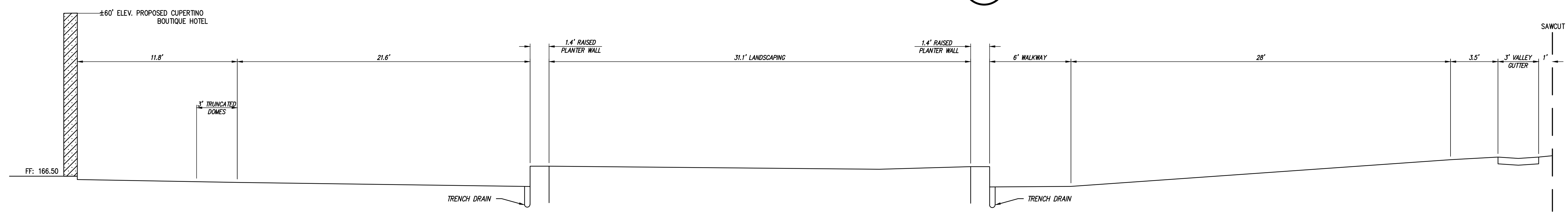
SECTION A  
SCALE: 1" = 4'



SECTION B  
SCALE: 1" = 6'



SECTION C  
SCALE: 1" = 6'



SECTION D  
SCALE: 1" = 4'

NO.	REVISION
SD PRICING SET	
6.1.18	

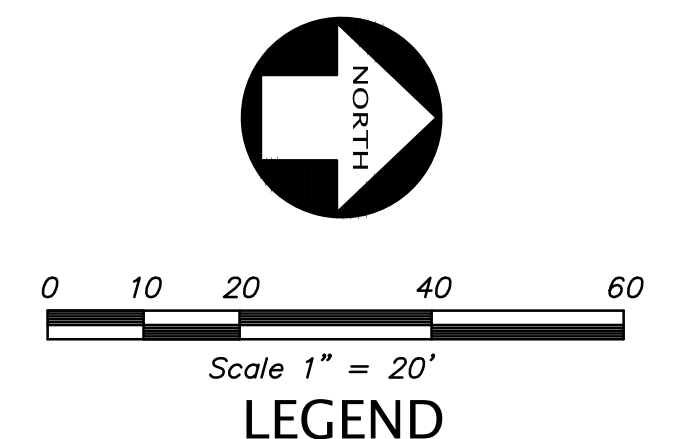
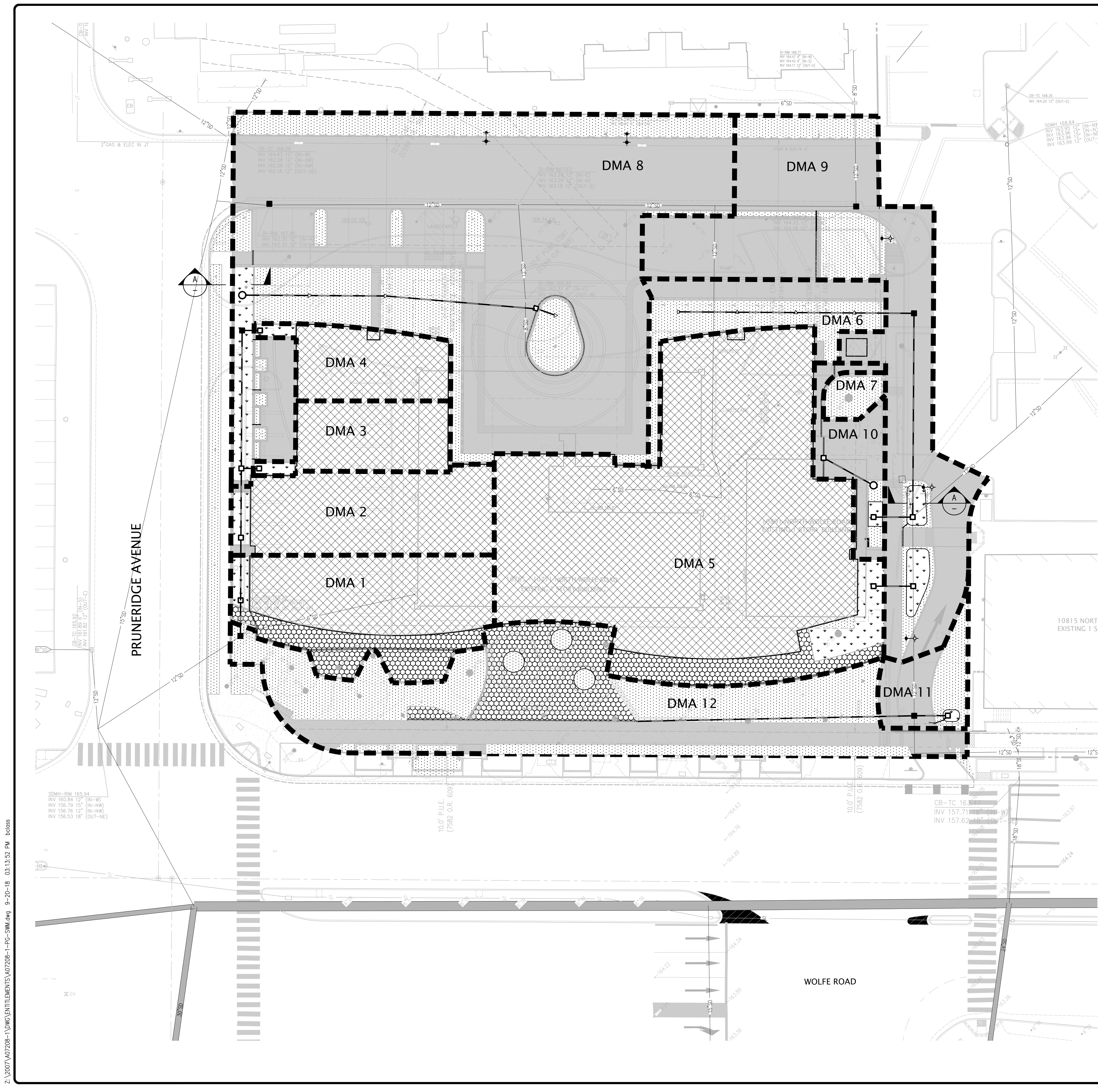


**KIER & WRIGHT**  
CIVIL ENGINEERS & SURVEYORS, INC.  
2850 Collier Canyon Road  
Livermore, California 94551  
Phone (925) 245-8788  
Fax (925) 245-8796

PRELIMINARY SECTIONS  
OF  
CUPERTINO VILLAGE  
FOR  
KIMCO  
CUPERTINO, CALIFORNIA

DATE	JAN., 2018
SCALE	
DESIGNER	SMC
JOB NO.	A07208-1
SHEET	<b>C2.2</b>

Z:\2007\A07208-1\DWG\ENTITLEMENTS\A07208-1-FIC.dwg 9-20-18 04:35:38 PM zsrjydddm



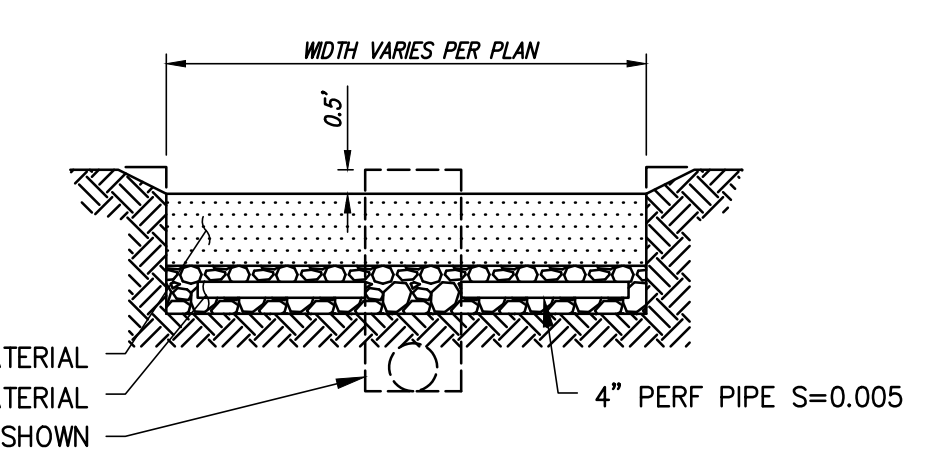
**LEGEND**

- TRIBUTARY AREA LIMITS
- LANDSCAPE AREA
- IMPERVIOUS ROOFTOP DRAINING TO BIO-SWALE
- IMPERVIOUS PAVEMENT DRAINING TO BIO-SWALE
- BIO-RETENTION TREATMENT AREA
- CONCRETE AREA
- PERMEABLE MATERIAL

**BIO-RETENTION SIZING CALCULATIONS**

Area No.	Area (SF)	Area (AC)	Pervious (SF)	Pervious (AC)	Imperv. (SF)	Imperv. (AC)	Treatment Area* (SF)	Treatment Provided (SF)	Sizing Ratio (%)	Type of Planter
DMA 1	4,996	0.11	1,417	0.03	3,437	0.08	3,437	142	4.1%	Bio-Retention Planter
DMA 2	3,973	0.09	0	0.00	3,818	0.09	3,818	155	4.1%	Bio-Retention Planter
DMA 3	2,096	0.05	0	0.00	2,011	0.05	2,011	85	4.2%	Bio-Retention Planter
DMA 4	2,092	0.05	0	0.00	2,008	0.05	2,008	85	4.2%	Bio-Retention Planter
DMA 5	17,300	0.40	1,286	0.03	15,347	0.35	15,347	668	4.4%	Bio-Retention Planter
DMA 6	2,683	0.06	1,588	0.04	1,095	0.03	1,095	0	0.0%	Self Treating Area
DMA 7	448	0.01	398	0.01	49	0.00	49	0	0.0%	Self Treating Area
DMA 8	24,034	0.55	5,640	0.13	17,675	0.41	17,675	719	4.1%	Bio-Retention Planter
DMA 9	10,820	0.25	1,727	0.04	8,729	0.20	8,729	364	4.2%	Bio-Retention Planter
DMA 10	1,520	0.03	0	0.00	1,460	0.03	1,460	60	4.1%	Bio-Retention Planter
DMA 11	1,333	0.03	567	0.01	735	0.02	735	32	4.3%	Bio-Retention Planter
DMA 12	10,640	0.24	7,535	0.17	3,105	0.07	3,105	0	0.0%	Self Treating Area
<b>Totals</b>	<b>81,935</b>	<b>1.88</b>	<b>20,158</b>	<b>0.46</b>	<b>59,468</b>	<b>1.37</b>	<b>59,468</b>	<b>2,309</b>		

\* Landscaped area is self treating. Only impervious area will be treated.



**BIO-FILTRATION PLANTER**

**SITE DATA**

PROPOSED COMBINED TOTAL OF LANDSCAPE, PERMEABLE AREAS AND BIO-RETENTION	+/-	23,101 SF (28.2% OF THE SITE)
PROPOSED BUILDING FOOTPRINT		26,319 SF
EXISTING LANDSCAPE AREA	+/-	16,701 SF (22.3% OF THE SITE)
EXISTING BUILDING FOOTPRINT		14,201 SF
TOTAL PARCEL AREA		74,979 SF

	REVISION								
NO.	BY	NO.	NO.	NO.	NO.	NO.	NO.	NO.	NO.
		SD PRICING SET	6.1.18						

**KIER & WRIGHT**  
 CIVIL ENGINEERS & SURVEYORS, INC.  
 2850 Collier Canyon Road  
 Livermore, California 94551  
 Phone (925) 245-8788  
 Fax (925) 245-8796

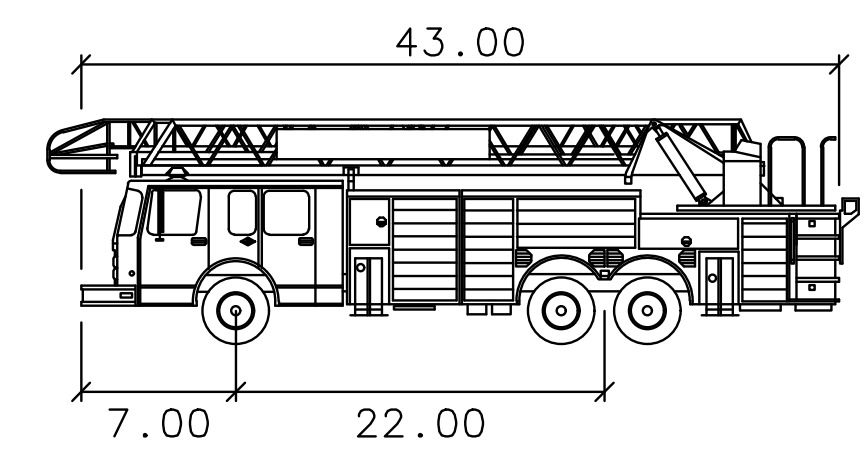
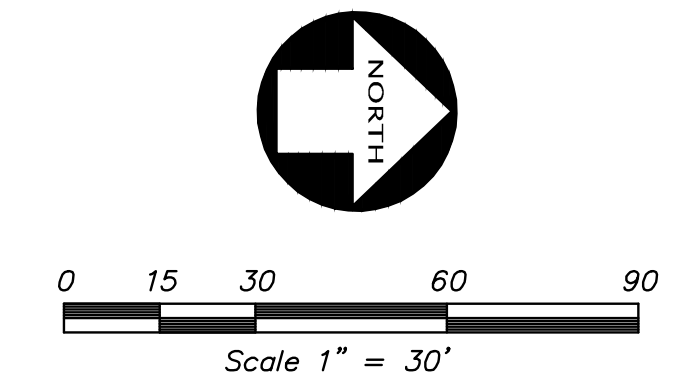
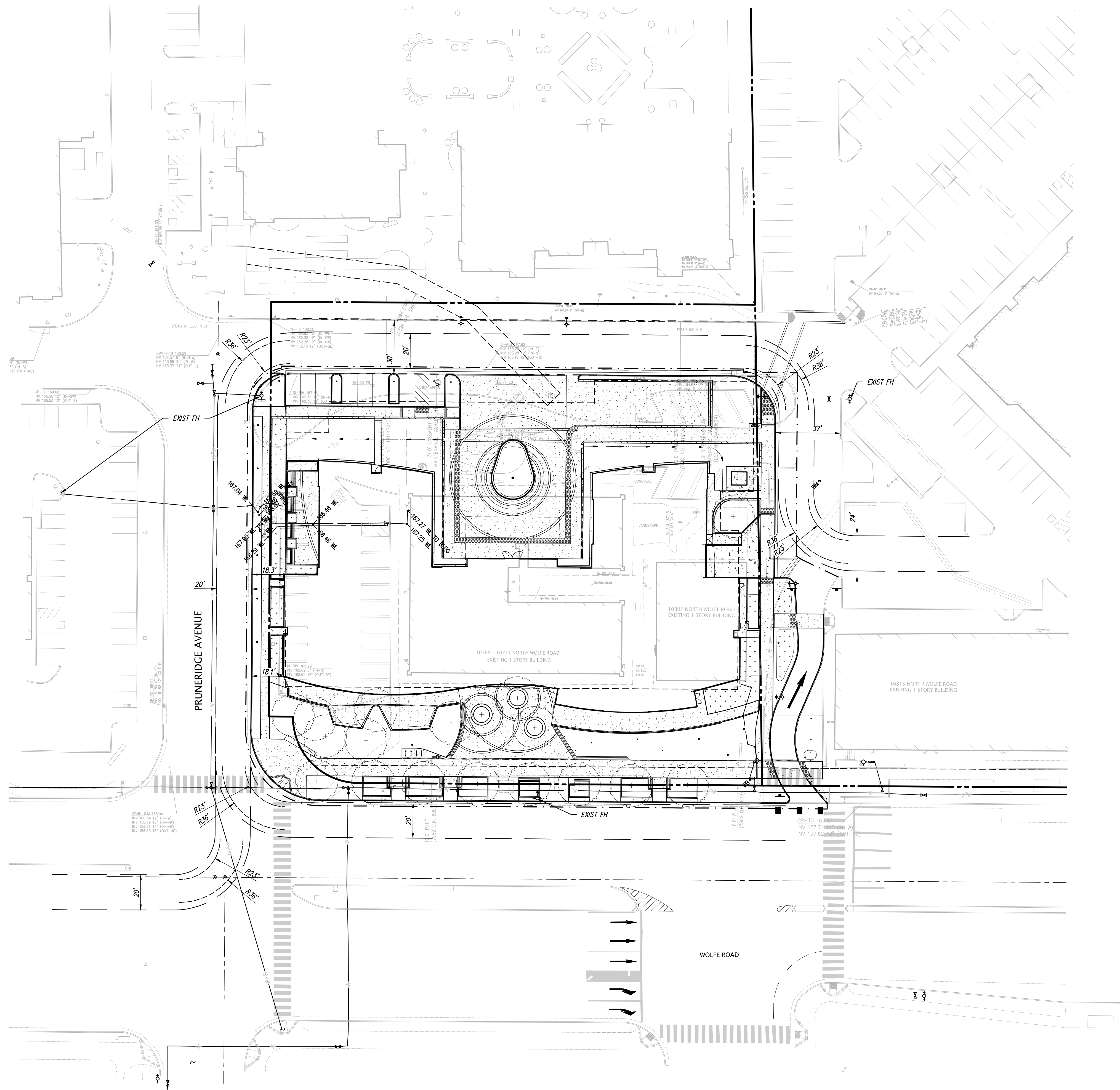
**STORM WATER CONTROL PLAN**  
 OF  
**CUPERTINO VILLAGE**  
 FOR  
**KIMCO**  
 CUPERTINO, CALIFORNIA

DATE	JAN., 2018
SCALE	1" = 20'
DESIGNER	SMC
JOB NO.	A07208-1
SHEET	<b>C3.1</b>

35

Z:\2007\A07208-1\DWG\ENTITLEMENTS\A07208-1-PC-SWM.dwg 9-20-18 03:13:52 PM bcdms

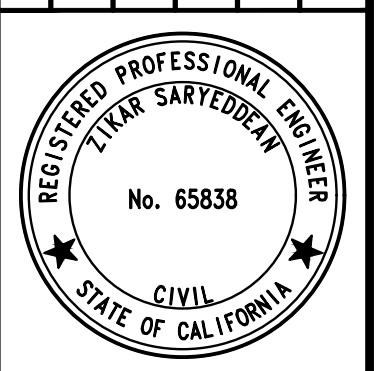
Z:\2007\A07208-1\DWG\ENTITLEMENTS\EXHIBITS\A07208-1 AUTO-TURN EXHIBIT-2.dwg 9-25-18 11:13:20 AM mfrtiz



Aerial Fire Truck

	feet
Width	: 8.50
Track	: 8.50
Lock to Lock Time	: 6.0
Steering Angle	: 33.3

NO.	REVISION	BY	NO.	REVISION	BY
1	SD PRICING SET	G.L.I.B.	1		
2			2		
3			3		
4			4		



**KIER & WRIGHT**  
 CIVIL ENGINEERS & SURVEYORS, INC.  
 2850 Collier Canyon Road  
 Livermore, California 94551  
 Phone (925) 245-8788  
 Fax (925) 245-8796

**FIRE TRUCK TURN EXHIBIT**  
 OF  
**CUPERTINO VILLAGE**  
 FOR  
**KIMCO**  
 CUPERTINO, CALIFORNIA

DATE	JAN., 2018
SCALE	
DESIGNER	SMC
JOB NO.	A07208-1
SHEET	<b>C2.4</b>