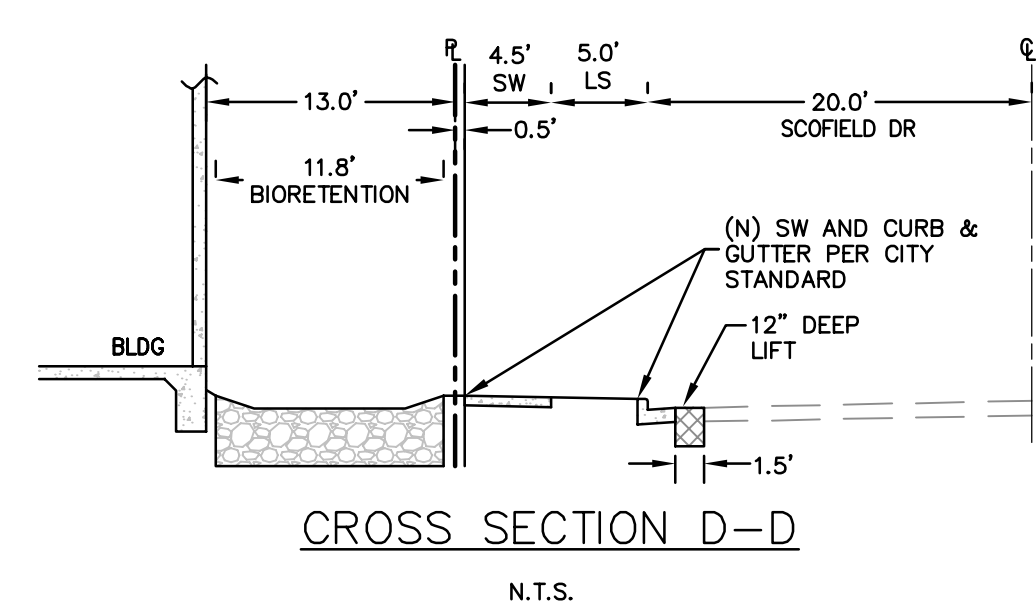
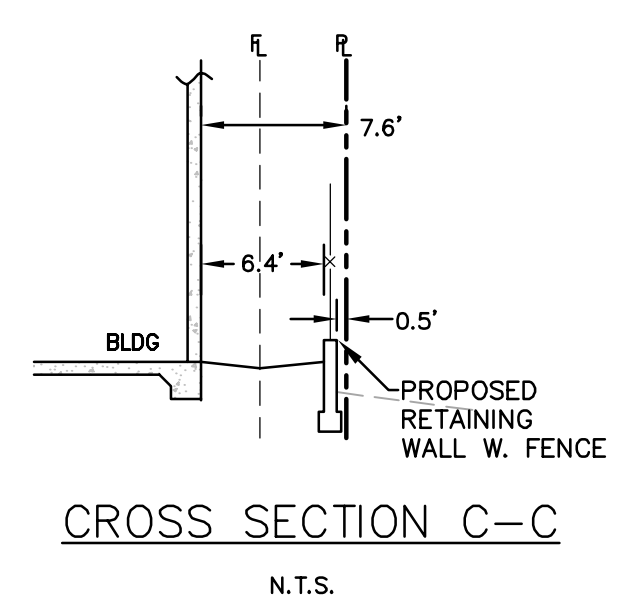
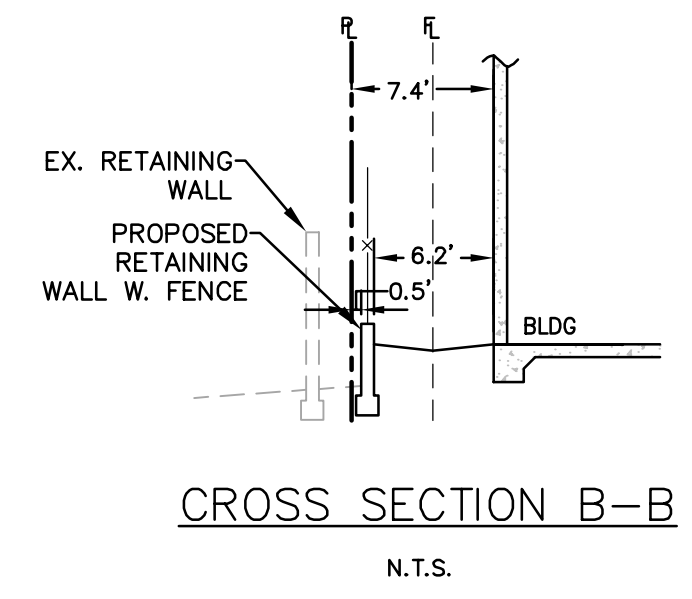
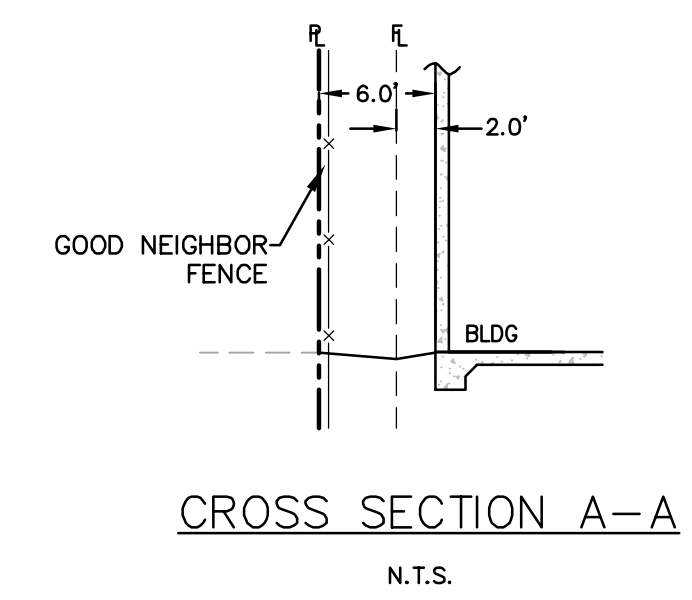
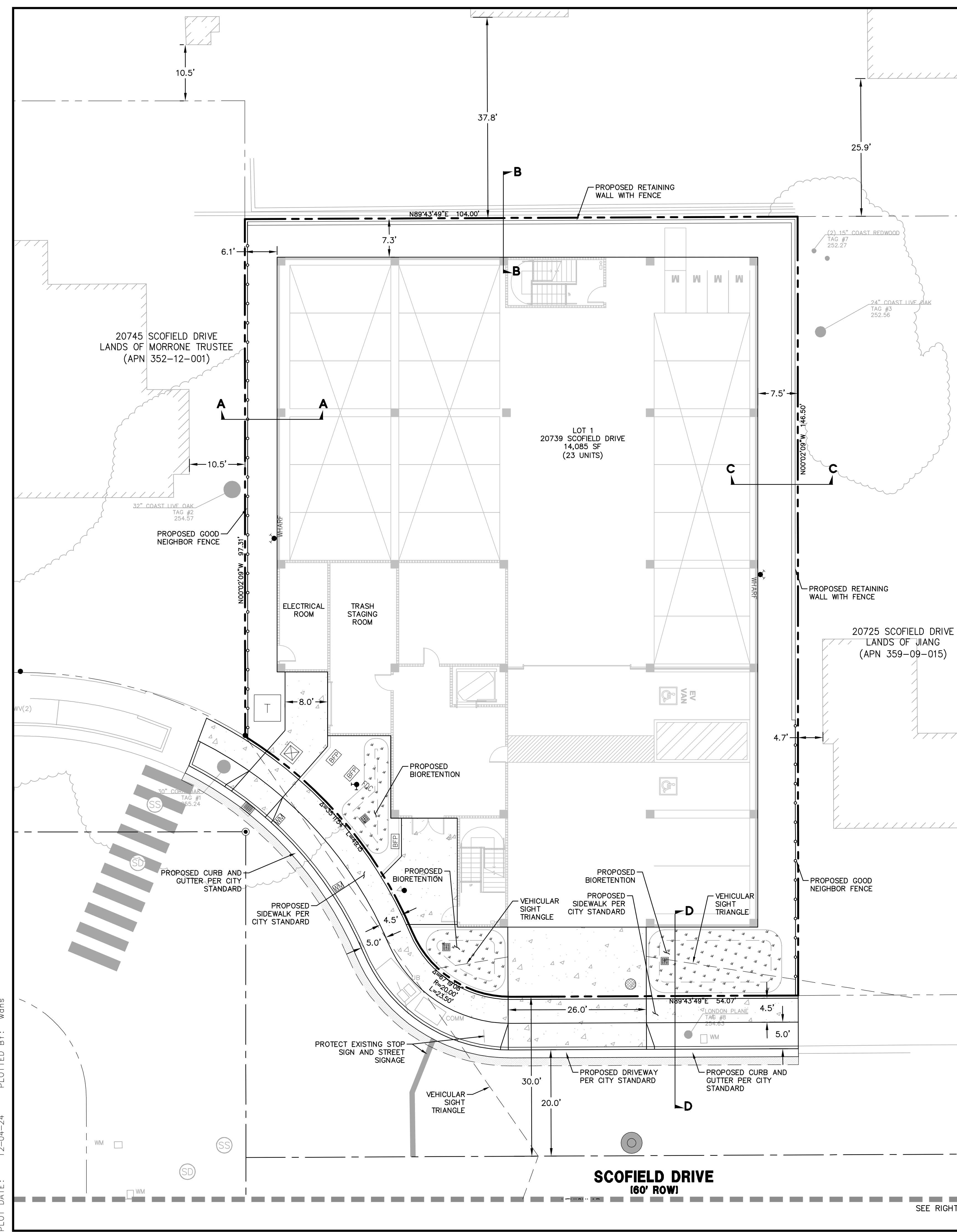


DRAWING NAME: \\BKF-SJ\vol14\2024\240559_20739_Scofield_Cupertino_Builders_Remed\ENG-1\Sheets\3_0_SCBR_Site_Plan.dwg
PLOT DATE: 12-04-24
PLOTTED BY: wans

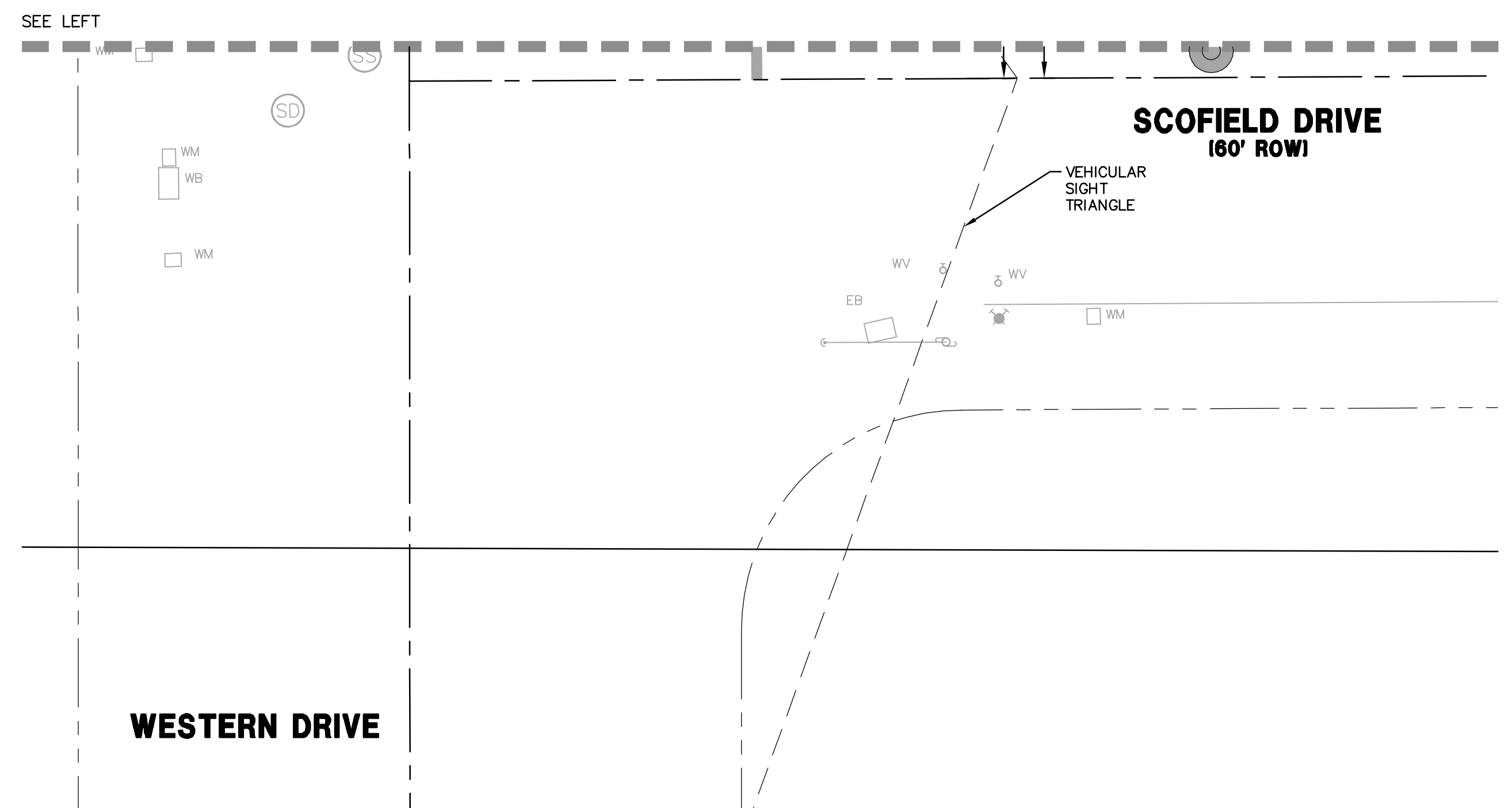
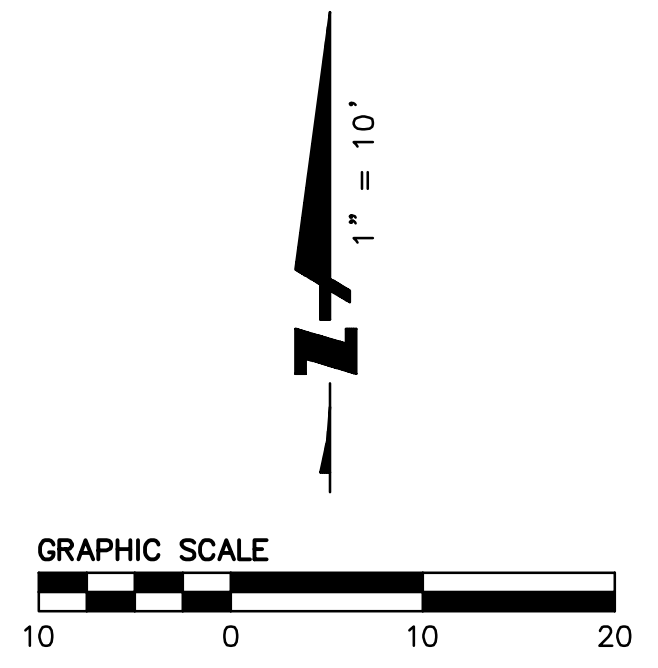


LEGEND

PROJECT BOUNDARY	---
ADJACENT LOT LINE	----
STREET CENTER LINE	=====
VERTICAL CURB & GUTTER	=====
SAWCUT	-----
DRIVEWAY	=====
BIORETENTION BASIN	=====
DETECTABLE WARNING SURFACE	=====
AC DEEP LIFT	=====
CONCRETE PAVEMENT	=====

SETBACK TABLE

SETBACK REQUIRED FOR ZONING R1-10:	FRONT (SOUTH, SCOFIELD DRIVE)	-1st FLOOR = MIN. 20'
		-2nd FLOOR = MIN. 25'
	REAR (NORTH)	-1st FLOOR = MIN. 20'
		-2nd FLOOR = MIN. 25'
	SIDE (EAST & WEST)	-1st FLOOR = MIN. 15' TOTAL
		MIN. 5' EACH SIDE
	-2nd FLOOR = MIN. 25' TOTAL	MIN. 10' EACH SIDE
SETBACK PROPOSED	SOUTH (SCOFIELD DRIVE) = MIN. 7'-3"	
	EAST = 7'-6" TO 7'-7"	
	NORTH = 7'-2" TO 7'-8"	
	WEST = 6'-0" TO 6'-3"	



BKF ENGINEERS
1730 N. FIRST STREET
SUITE 600
SAN JOSE, CA 95112
(408) 467-9100
www.bkf.com

20739 SCOFIELD DRIVE, CUPERTINO
PRELIMINARY SITE PLAN
SANTA CLARA COUNTY
CUPERTINO

DRAFT

No.	Revisions
Date	07/17/24
Scale	AS SHOWN
Design	IB/SW
Drawn	SW
Approved	PC
Job No	20240559
Drawing Number:	
3	OF 6